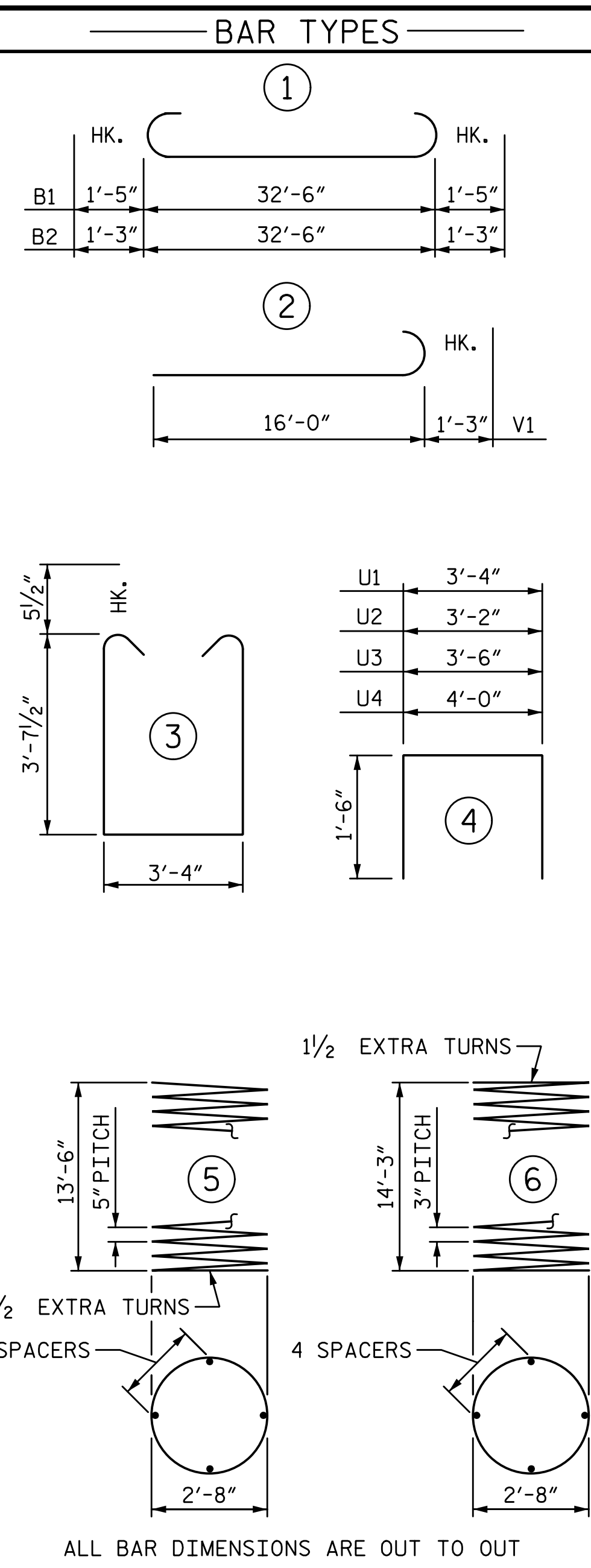
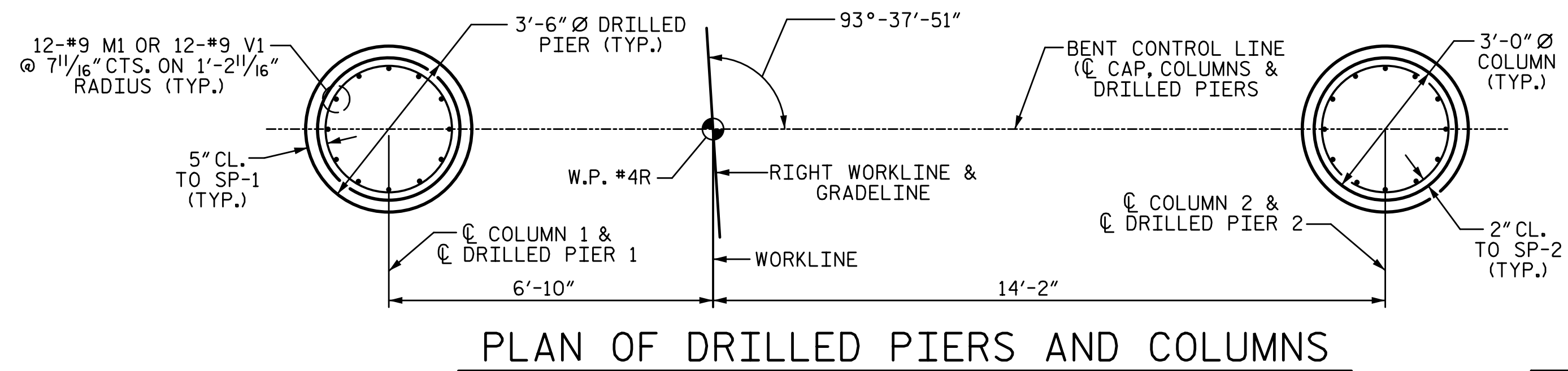
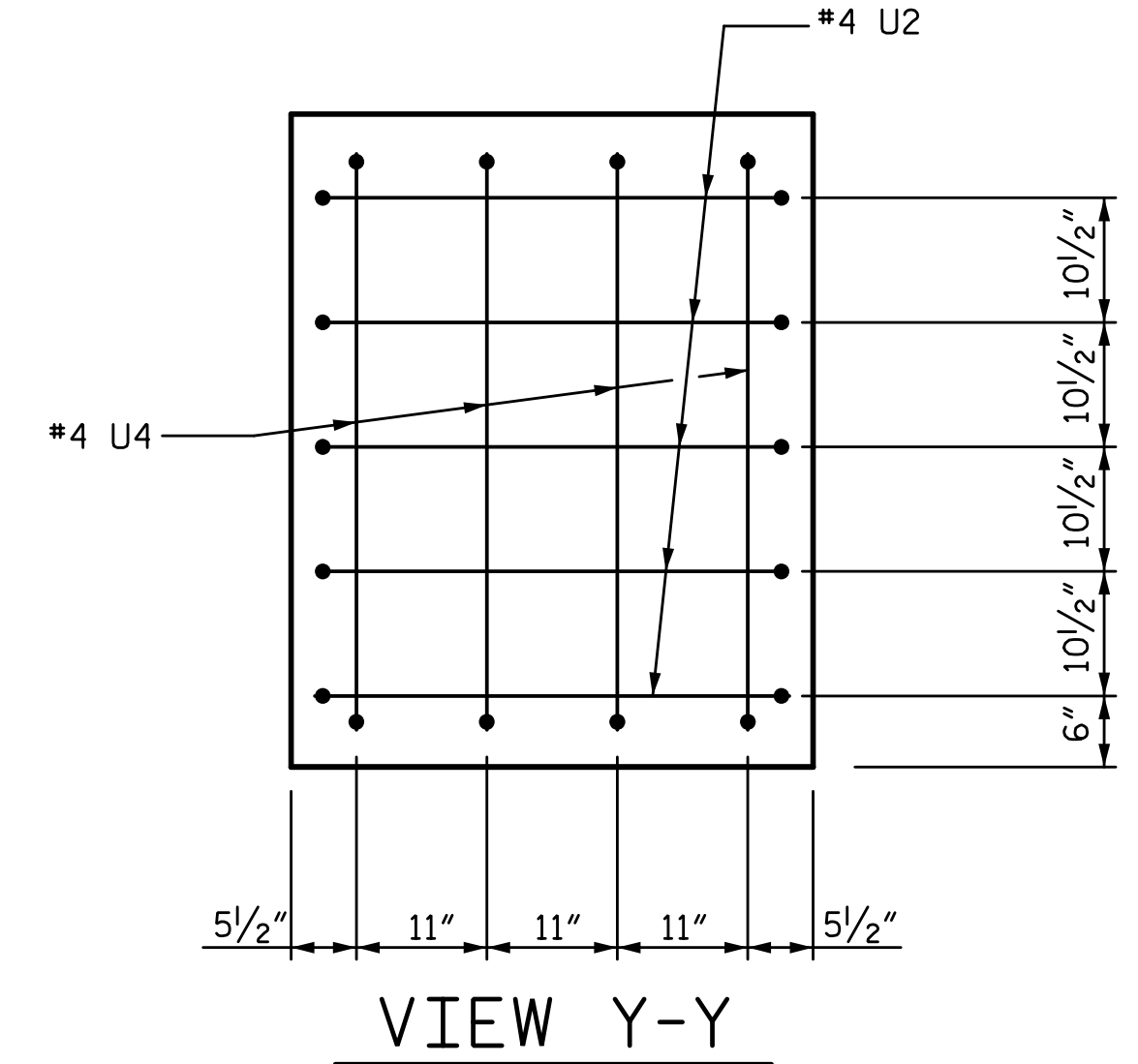
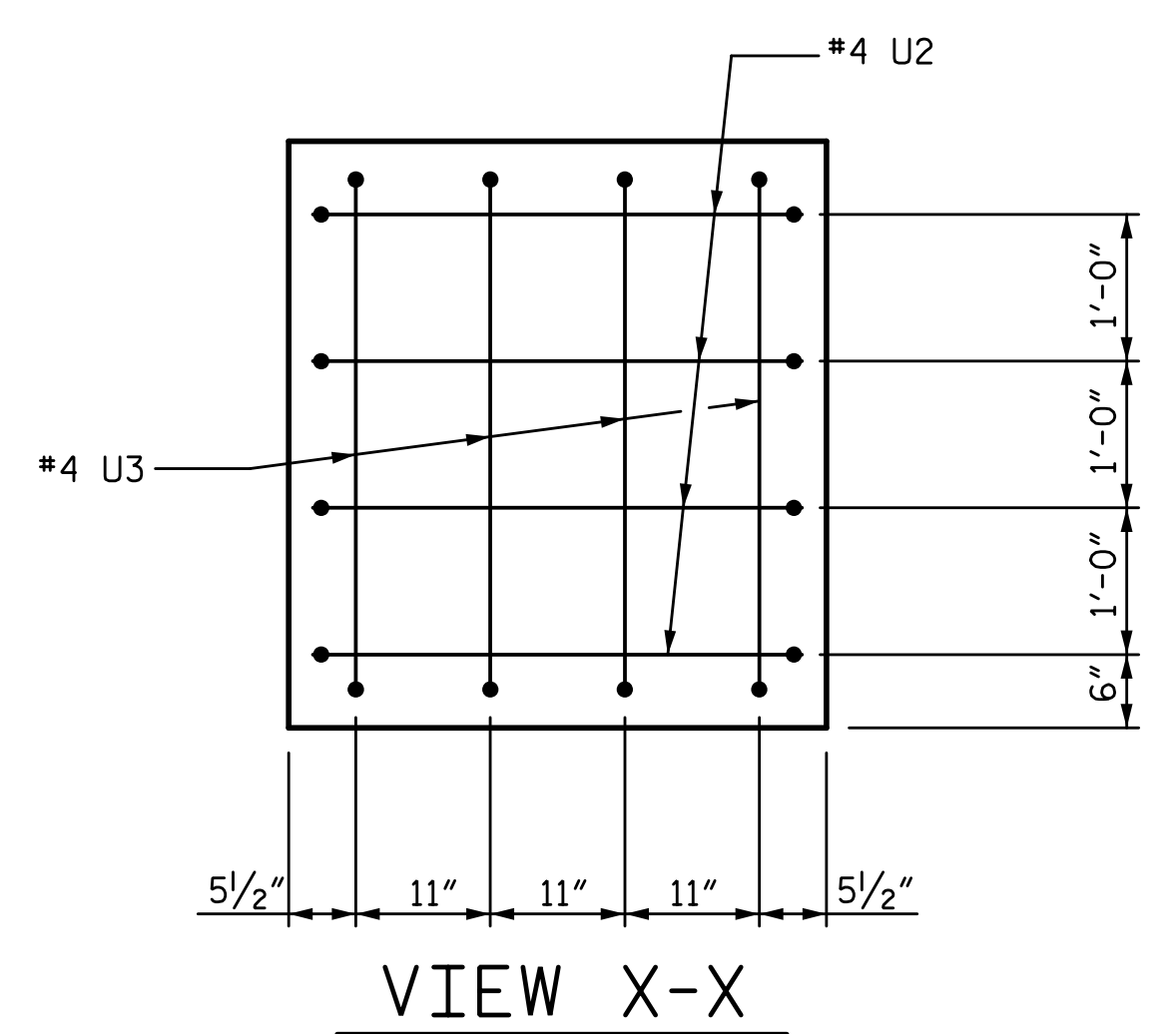
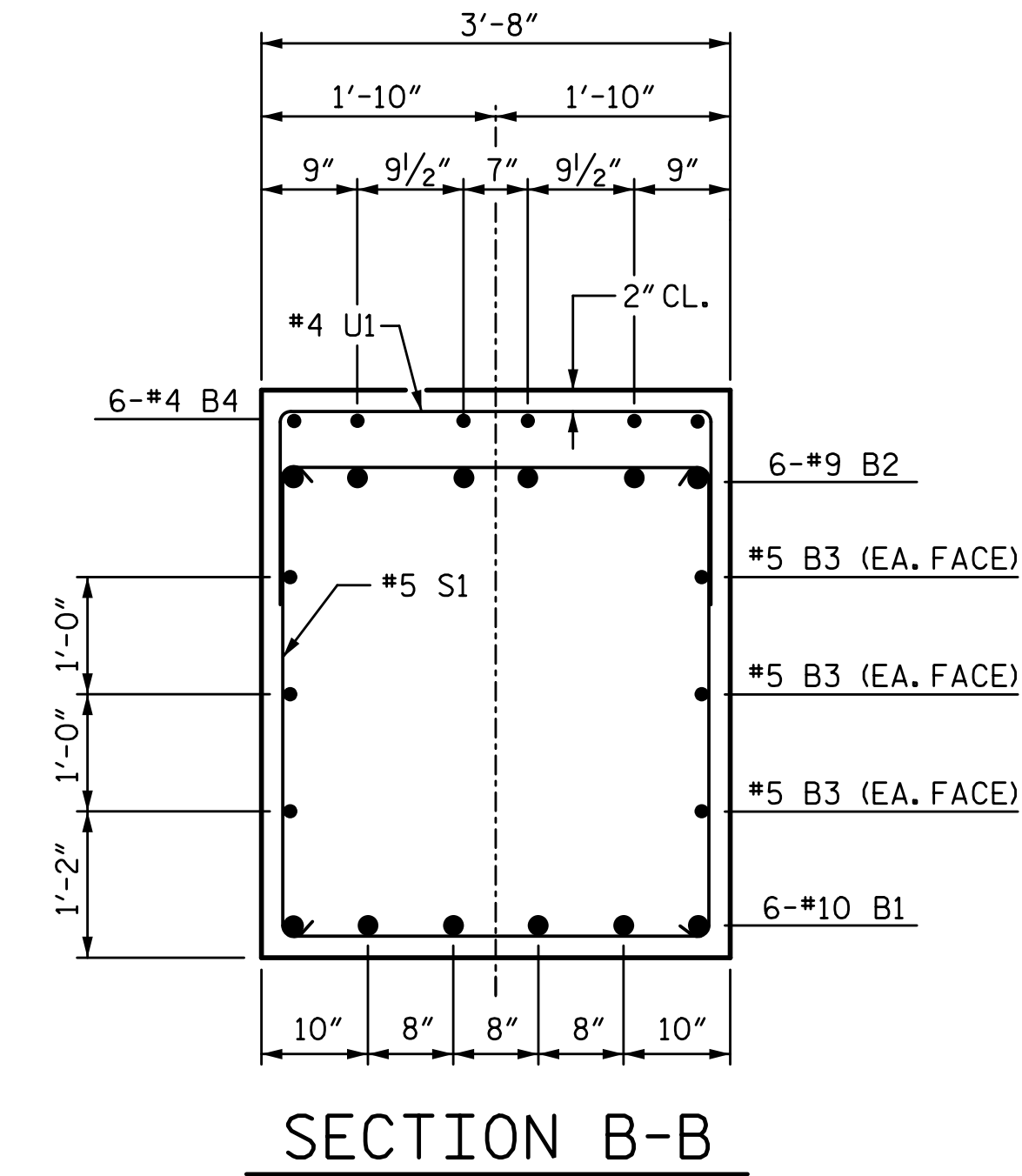
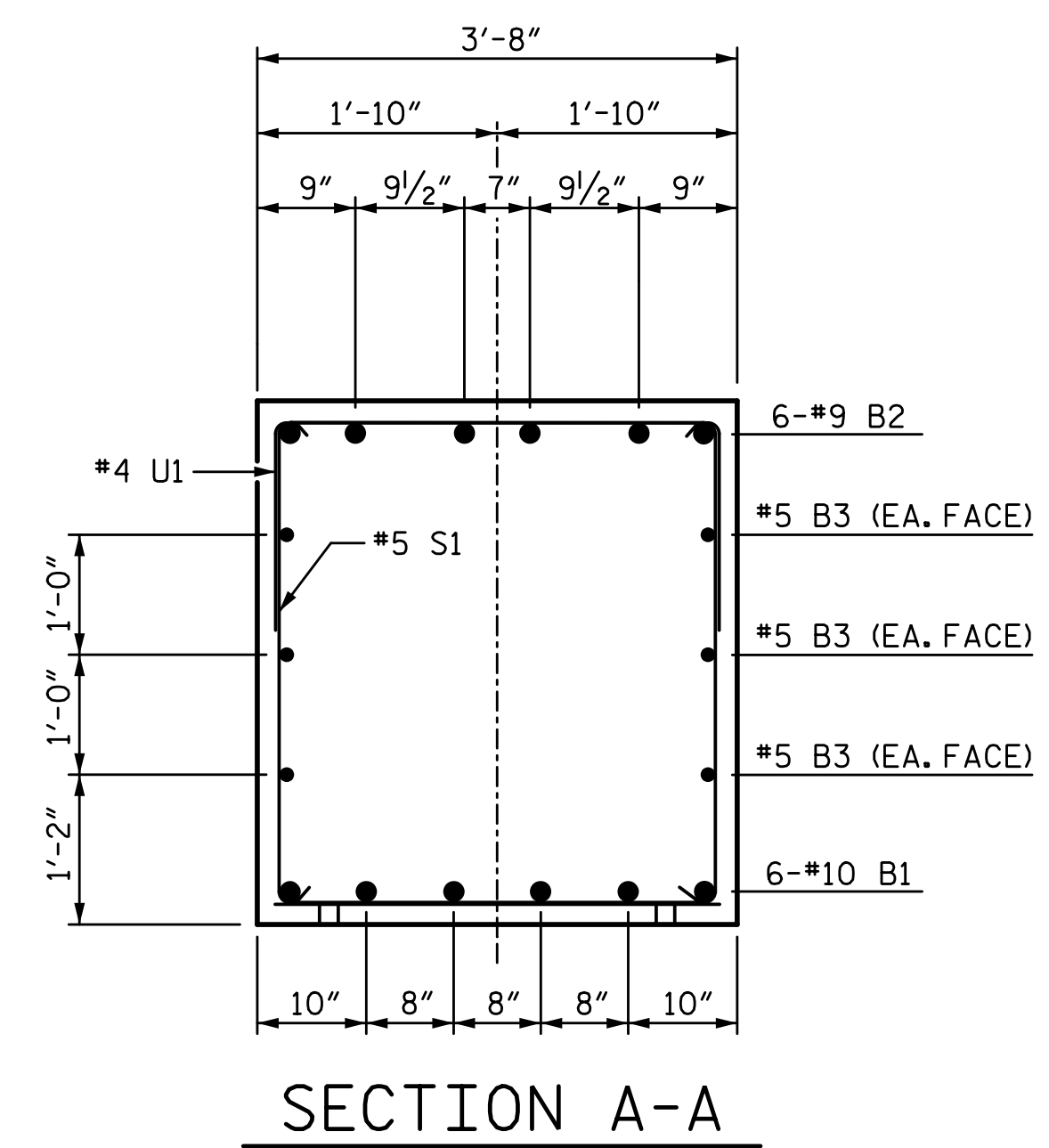
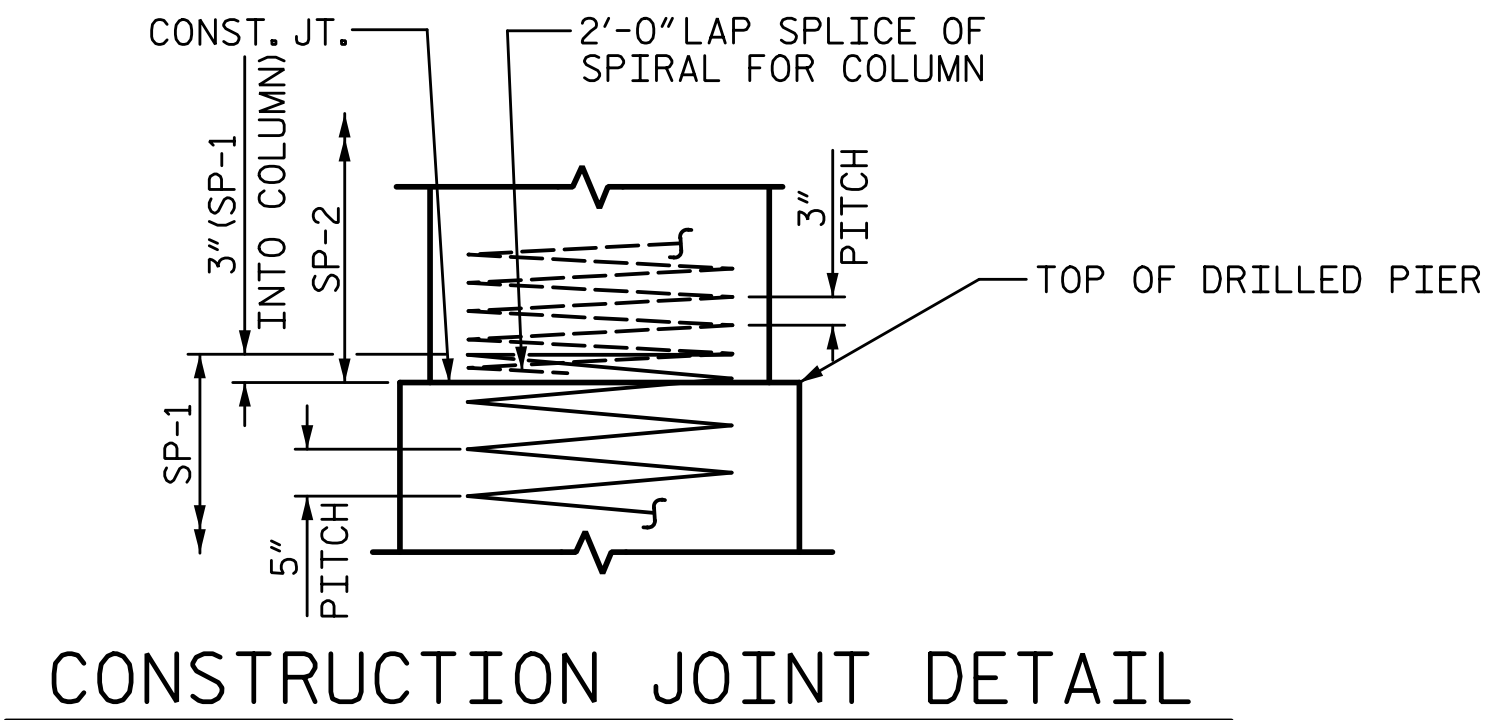
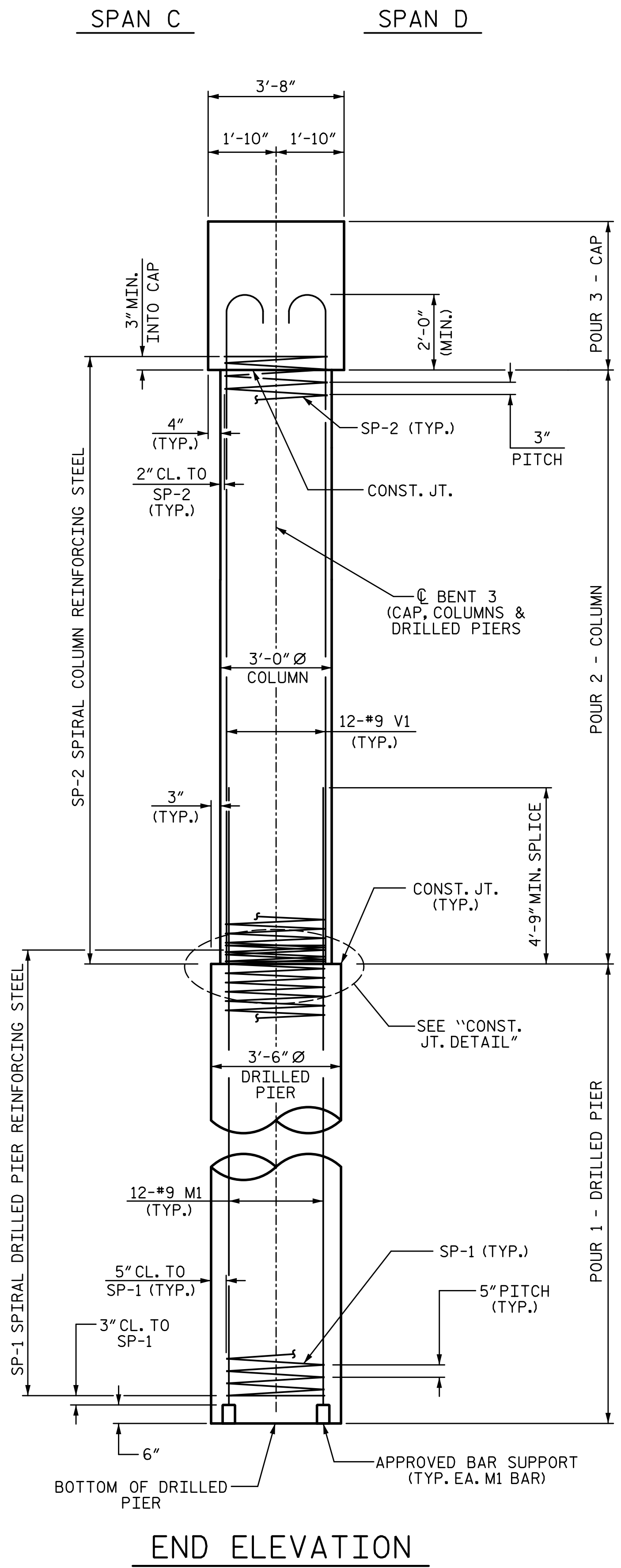


1/14/2020 10:06:29 AM G:\Projects\2017\I-5711\Structures\Drawings\Final\4015711-SMJ-B3-RT\_000177.dgn



BILL OF MATERIAL					
BENT 3					
BAR	NO.	SIZE	TYPE	LENGTH	WEIGHT
B1	6	#10	1	35'-4"	912
B2	6	#9	2	35'-0"	714
B3	6	#5	STR	32'-8"	204
B4	6	#4	STR	10'-6"	42
B5	6	#4	STR	7'-4"	29
M1	24	#9	STR	21'-3"	1734
S1	49	#5	3	11'-6"	588
U1	33	#4	4	6'-4"	140
U2	9	#4	4	6'-2"	37
U3	4	#4	4	6'-6"	17
U4	4	#4	4	7'-0"	19
V1	24	#9	2	17'-3"	1408
SP-1	2	**	5	279'-8"	583
SP-2	2	*	6	486'-10"	650
REINFORCING STEEL					5844 LB
SPIRAL COL. REINF. STEEL					1233 LB
CLASS "A" CONCRETE BREAKDOWN					
POUR 2 (COLUMNS)					7.4 CY
POUR 3 (CAP)					19.0 CY
TOTAL					26.4 CY
DRILLED PIERS:					
DRILLED PIER CONCRETE					
POUR 1 (DRILLED PIERS)					10.0 CY
3'-6" Ø DRILLED PIER NOT IN SOIL					26 LF
3'-6" Ø DRILLED PIER IN SOIL					2 LF
CSL TUBES					124 LF

\* THE "SP-1" SPIRAL REINFORCING STEEL SHALL BE W21 OR D-31 COLD DRAWN WIRE OR #5 PLAIN OR DEFORMED BAR.

\* THE "SP-2" SPIRAL REINFORCING STEEL SHALL BE W20 OR D-20 COLD DRAWN WIRE OR #4 PLAIN OR DEFORMED BAR.

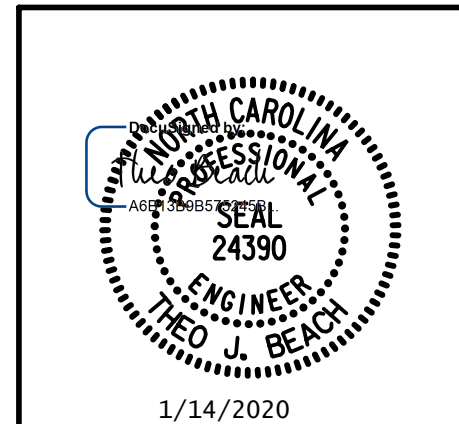
PROJECT NO. I-5711  
ALAMANCE COUNTY  
 STATION: STA. 27+02.26 -L-

SHEET 2 OF 2

STATE OF NORTH CAROLINA  
 DEPARTMENT OF TRANSPORTATION  
 RALEIGH  
 SUBSTRUCTURE

**BENT 3**

RIGHT WIDENING



PLANS PREPARED BY:  
**SIMPSON ENGINEERS & ASSOCIATES**  
 5640 Dillard Drive  
 Suite 200  
 Cary, NC 27518  
 (919) 852-0468  
 (919) 852-0598 (Fax)  
 www.simpsonengr.com  
 LICENSURE NO. C-2521

REVISIONS					
NO.	BY:	DATE:	NO.	BY:	DATE:
1			3		
2			4		

DRAWN BY: S.D. COOPER      DATE: 1-20  
 CHECKED BY: T. BEACH      DATE: 1-20  
 DESIGN ENGINEER OF RECORD: T. BEACH      DATE: 1-20

**DOCUMENT NOT CONSIDERED FINAL UNLESS ALL SIGNATURES COMPLETED**

SHEET NO. S-59  
 TOTAL SHEETS 89