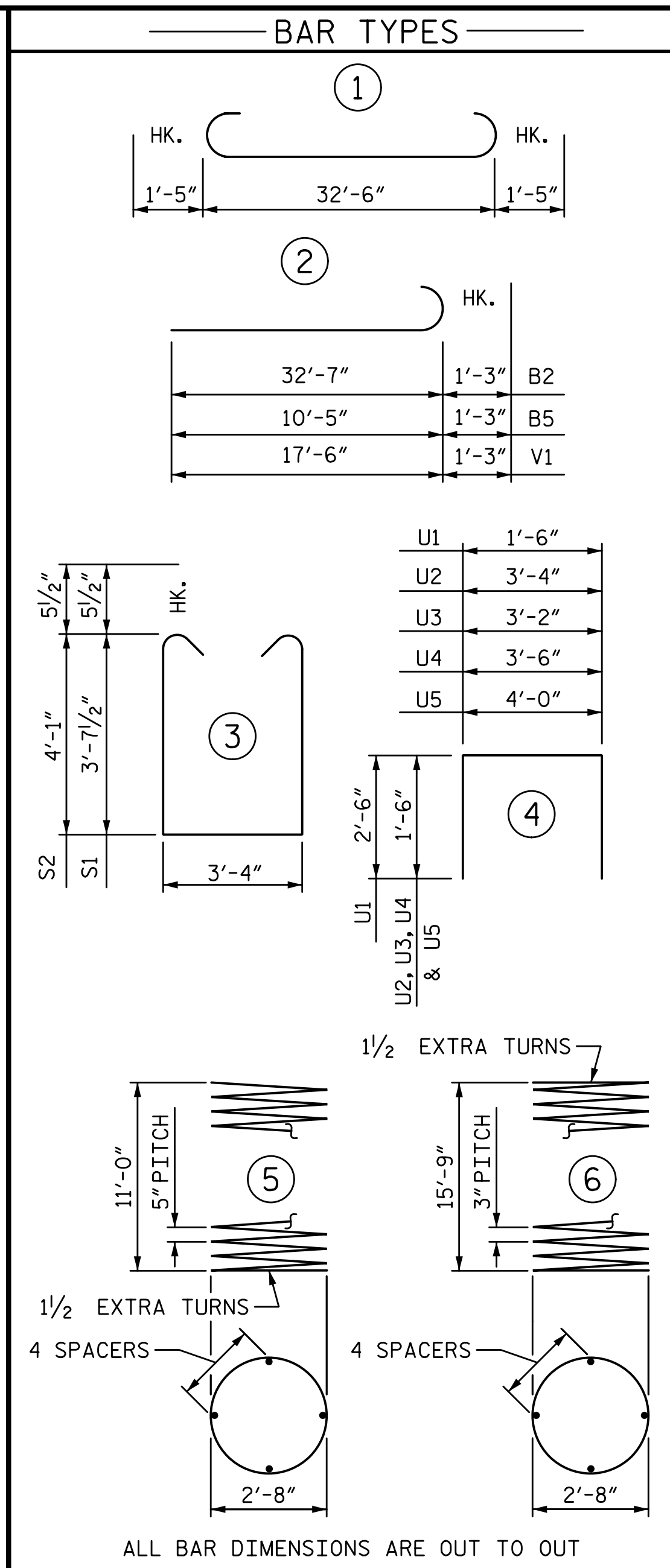
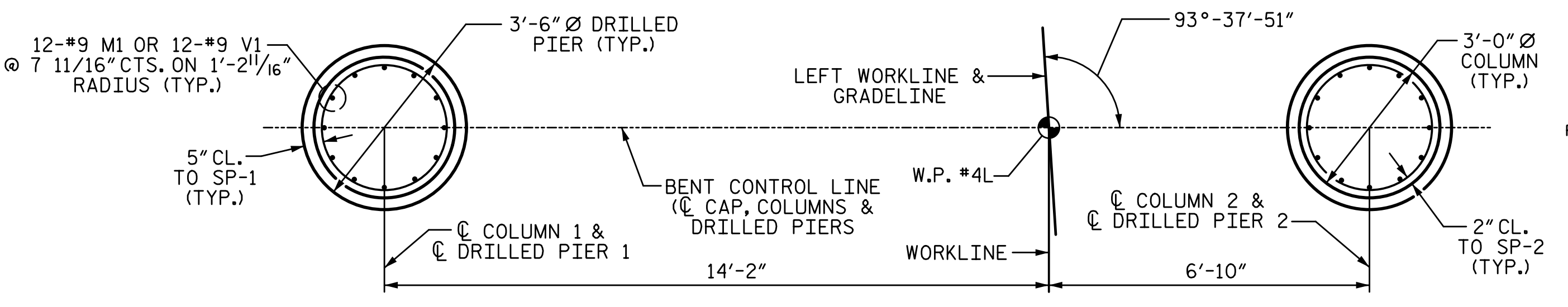
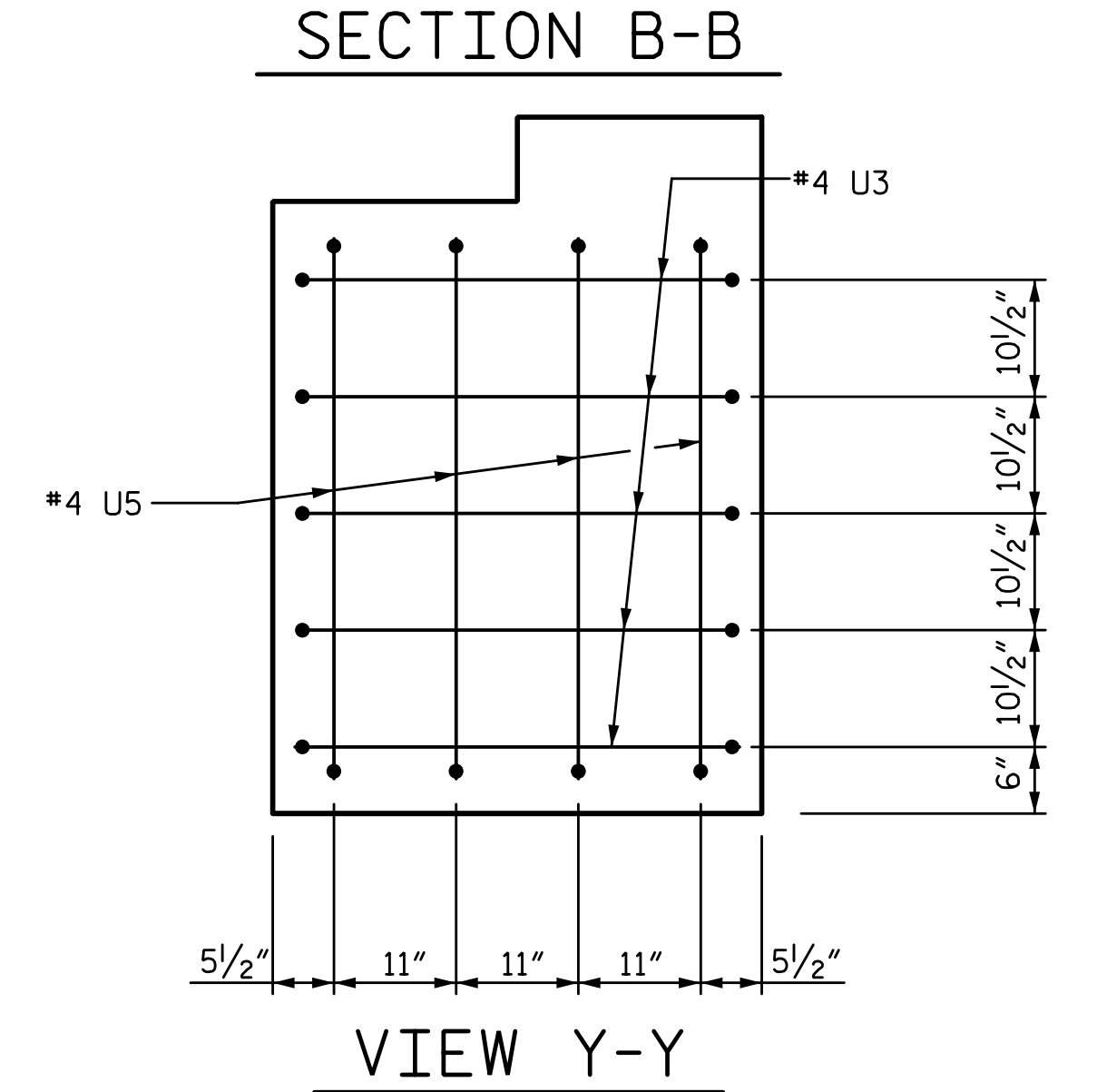
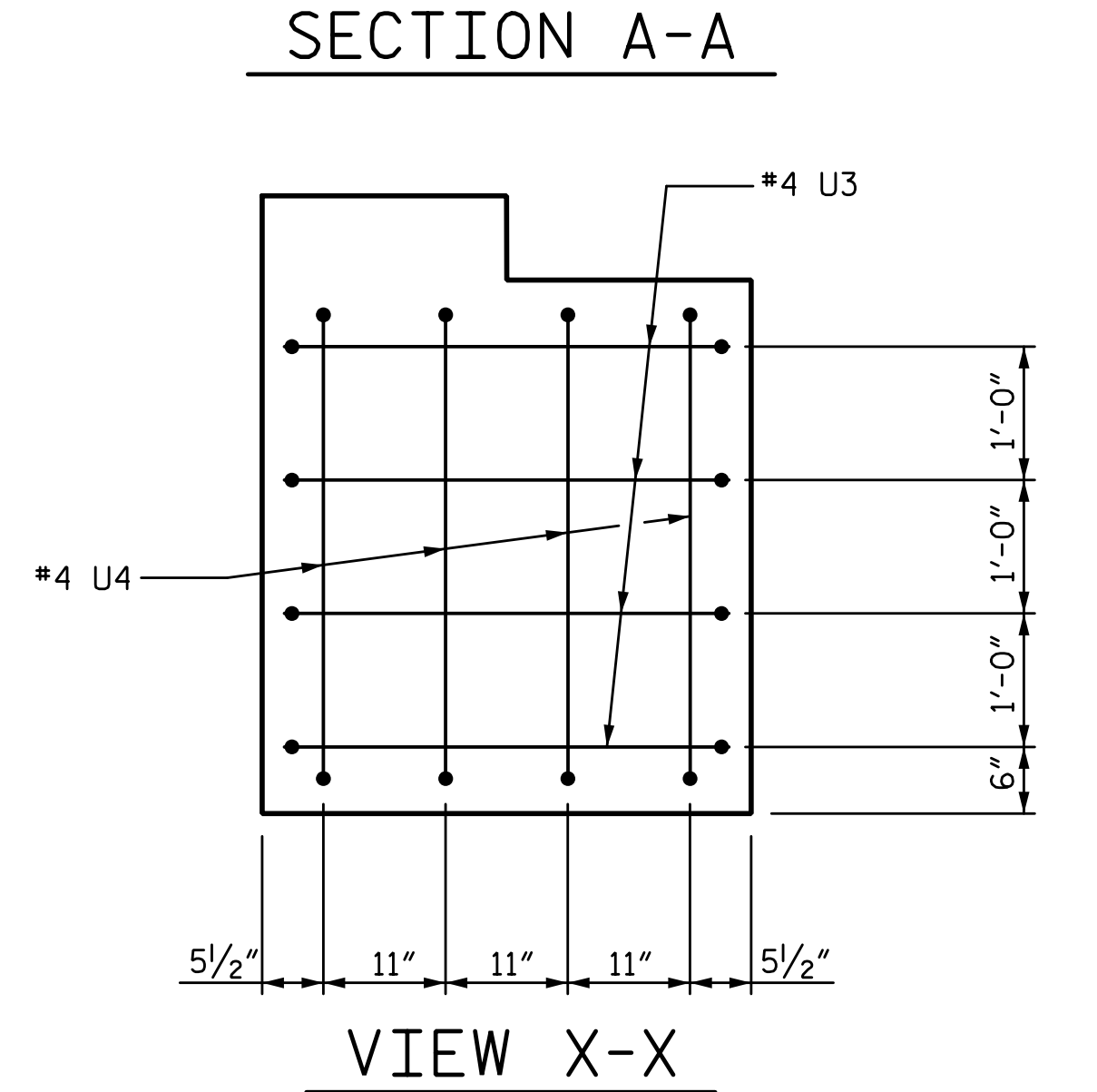
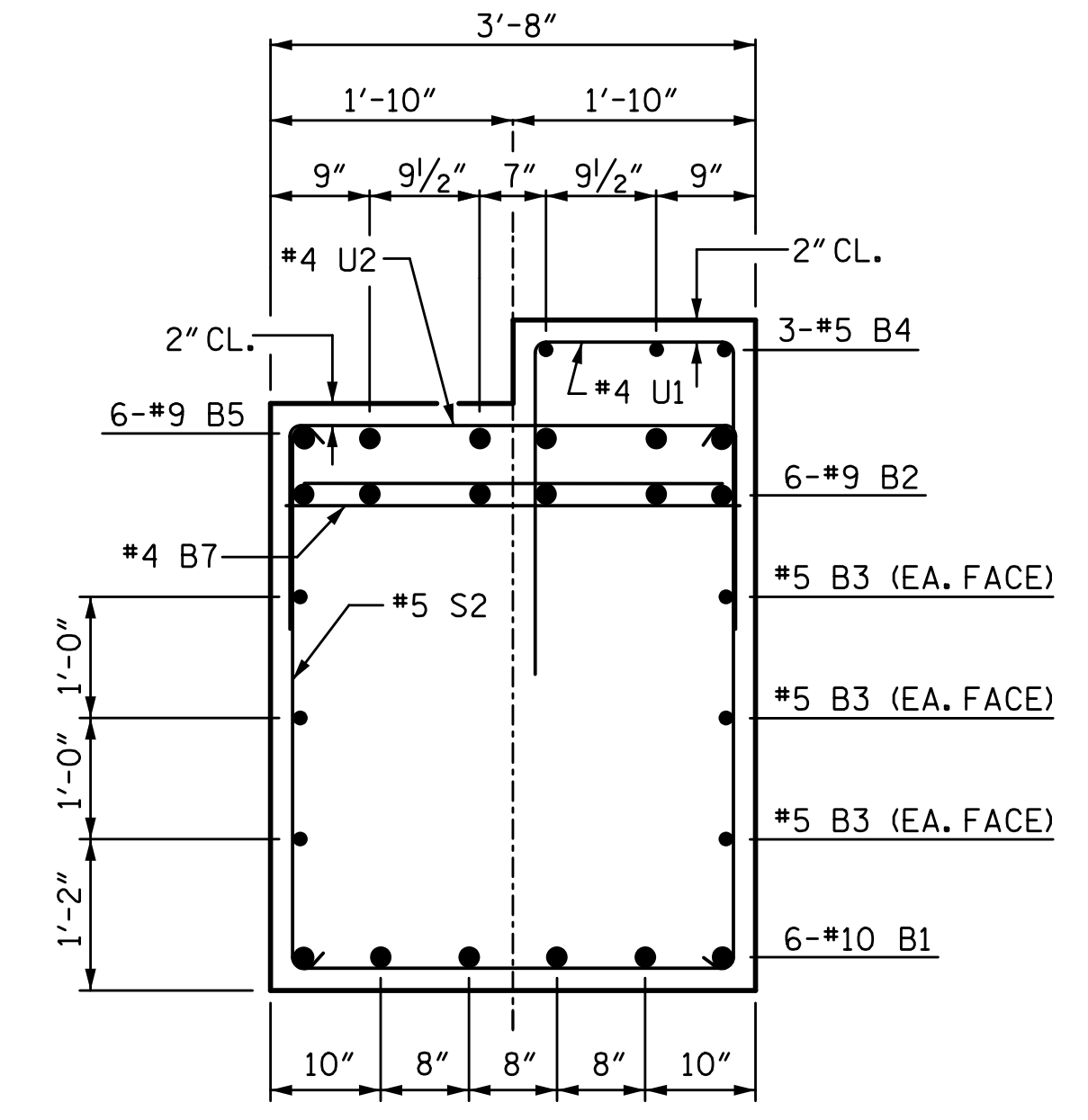
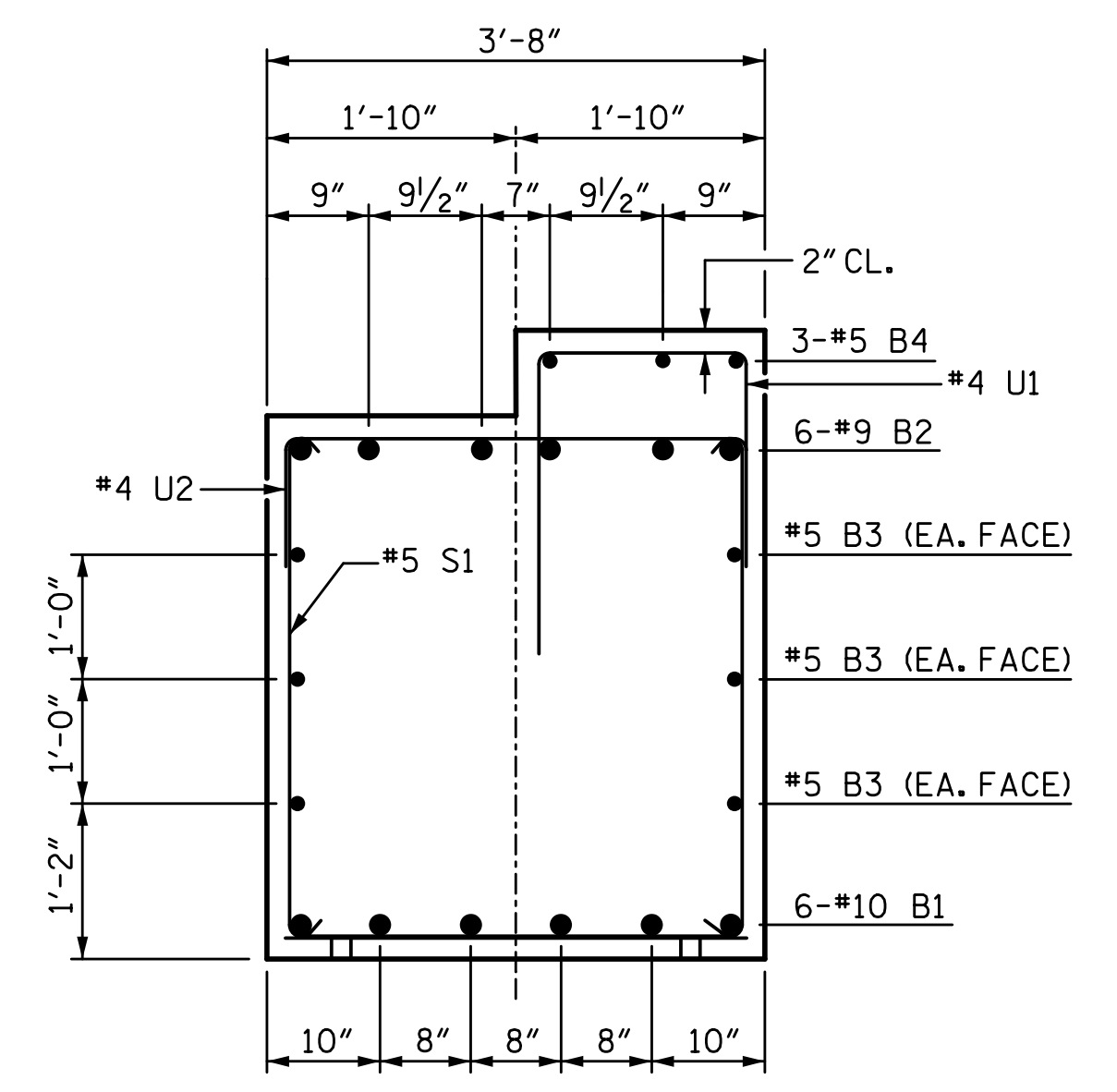
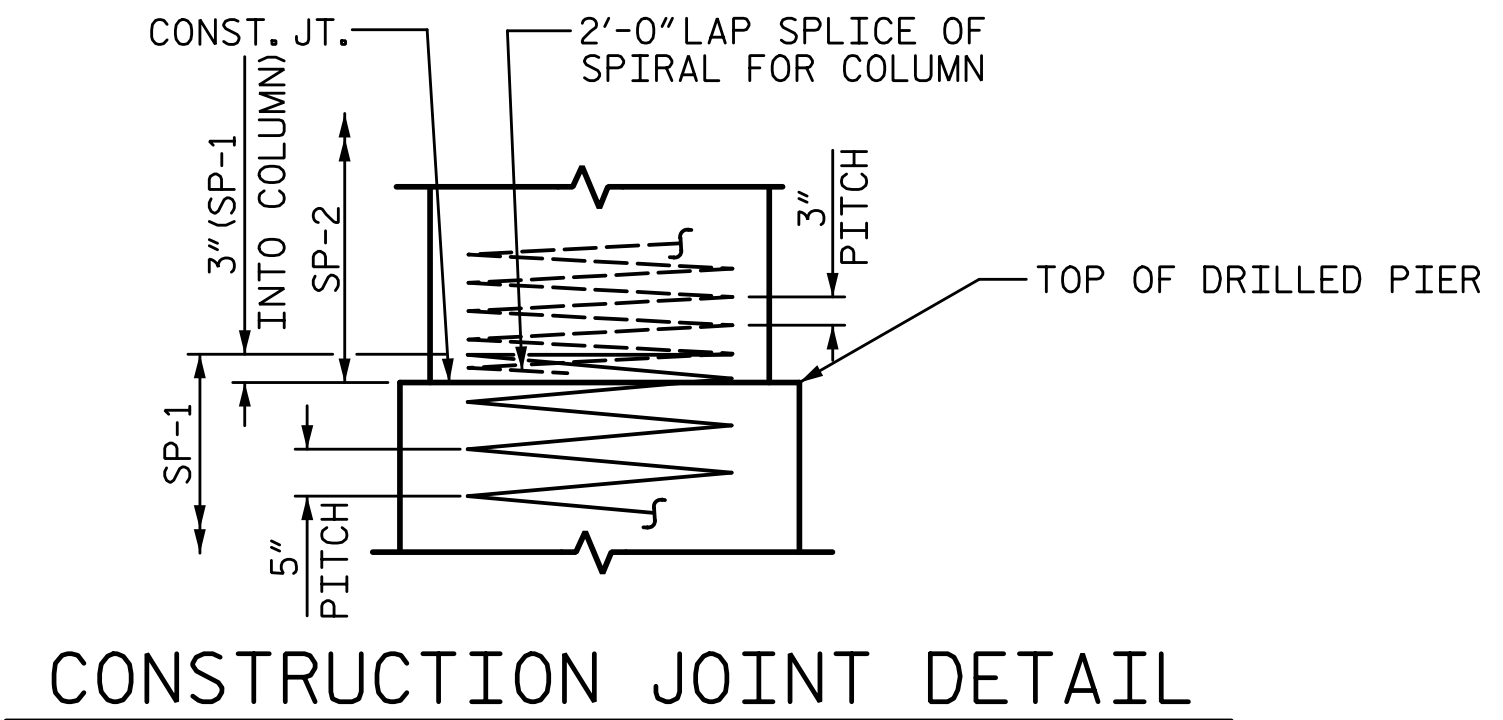
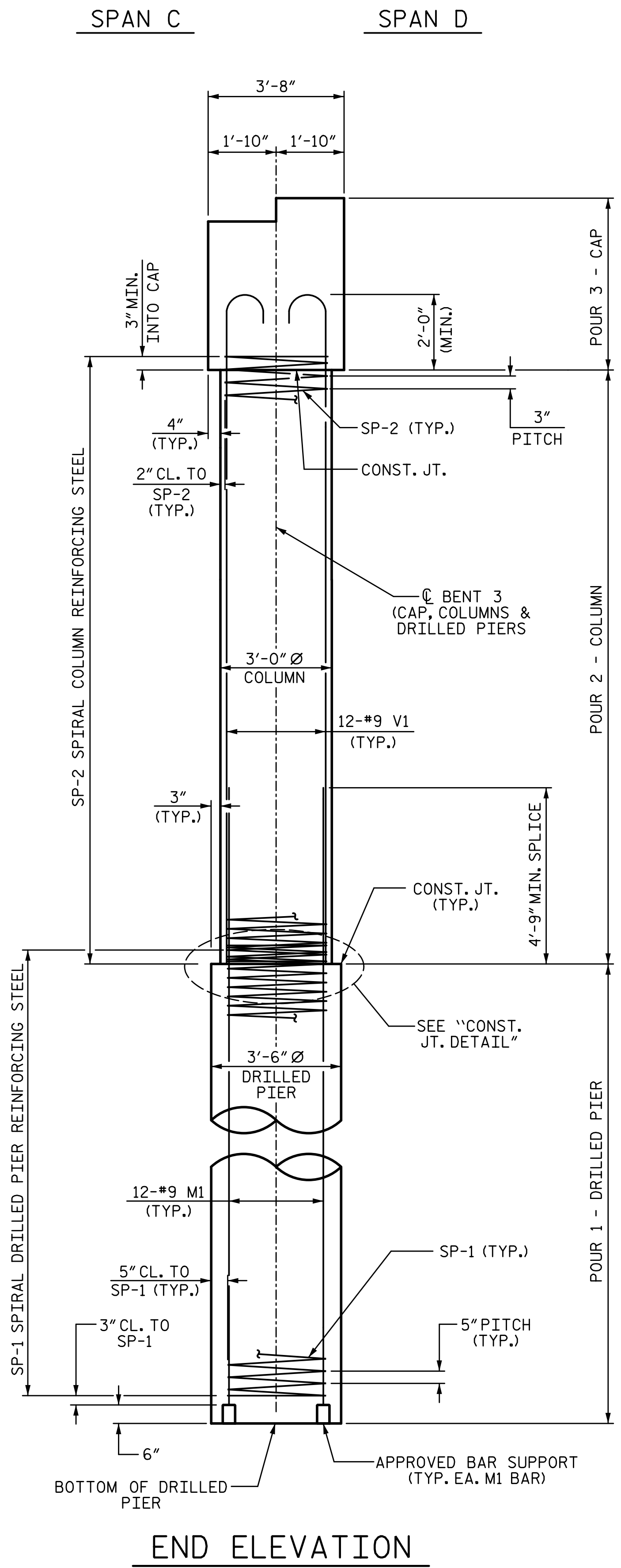


1/14/2020 10:06:29 AM G:\Projects\2017\I-5711\Structures\Drawings\Final\401-I5711-SMJ-B3-LT_000177.dgn



BILL OF MATERIAL					
BENT 3					
BAR NO.	SIZE	TYPE	LENGTH	WEIGHT	
B1	6	10	1	35'-4"	912
B2	6	9	2	33'-10"	690
B3	6	5	STR	32'-8"	204
B4	12	5	STR	7'-4"	92
B5	6	9	2	11'-8"	238
B6	3	5	STR	3'-2"	10
B7	4	4	STR	3'-4"	9
B8	6	4	STR	7'-4"	29
M1	24	9	2	18'-9"	1530
S1	30	5	3	11'-6"	360
S2	19	5	3	12'-5"	246
U1	41	4	4	6'-6"	178
U2	29	4	4	6'-4"	123
U3	9	4	4	6'-2"	37
U4	4	4	4	6'-6"	17
U5	4	4	4	7'-0"	19
V1	24	9	2	18'-9"	1530
SP-1	2	**	5	230'-4"	480
SP-2	2	*	6	536'-4"	717
REINFORCING STEEL				6224	LB
SPIRAL COL. REINF. STEEL				1197	LB
CLASS "A" CONCRETE BREAKDOWN					
POUR 2 (COLUMNS)				8.2	CY
POUR 3 (CAP)				20.5	CY
TOTAL				28.7	CY
DRILLED PIERS:					
DRILLED PIER CONCRETE				8.2	CY
POUR 1 (DRILLED PIERS)				8.2	CY
3'-6" Ø DRILLED PIER NOT IN SOIL				23	LF
3'-6" Ø DRILLED PIER IN SOIL				0	LF
CSL TUBES				104	LF

* THE "SP-1" SPIRAL REINFORCING STEEL SHALL BE W21 OR D-31 COLD DRAWN WIRE OR #5 PLAIN OR DEFORMED BAR.
 * THE "SP-2" SPIRAL REINFORCING STEEL SHALL BE W20 OR D-20 COLD DRAWN WIRE OR #4 PLAIN OR DEFORMED BAR.

PROJECT NO. I-5711
ALAMANCE COUNTY
 STATION: STA. 27+02.26 -L-

SHEET 2 OF 2

STATE OF NORTH CAROLINA
 DEPARTMENT OF TRANSPORTATION
 RALEIGH
 SUBSTRUCTURE

BENT 3

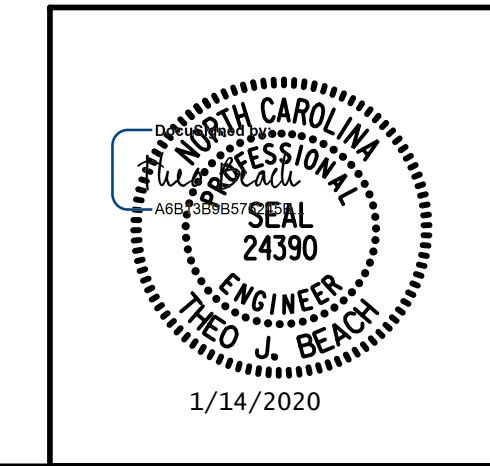
LEFT WIDENING

REVISIONS					
NO.	BY:	DATE:	NO.	BY:	DATE:
1			3		
2			4		

SHEET NO. S-57
 TOTAL SHEETS 89

DRAWN BY: S.D. COOPER DATE: 1-20
 CHECKED BY: T. BEACH DATE: 1-20
 DESIGN ENGINEER OF RECORD: T. BEACH DATE: 1-20

PLANS PREPARED BY:
SIMPSON ENGINEERS & ASSOCIATES
 5640 Dillard Drive
 Suite 200
 Cary, NC 27518
 (919) 852-0468
 (919) 852-0538 (Fax)
 www.simpsonengr.com
 LICENSURE NO. C-2521



DOCUMENT NOT CONSIDERED FINAL UNLESS ALL SIGNATURES COMPLETED