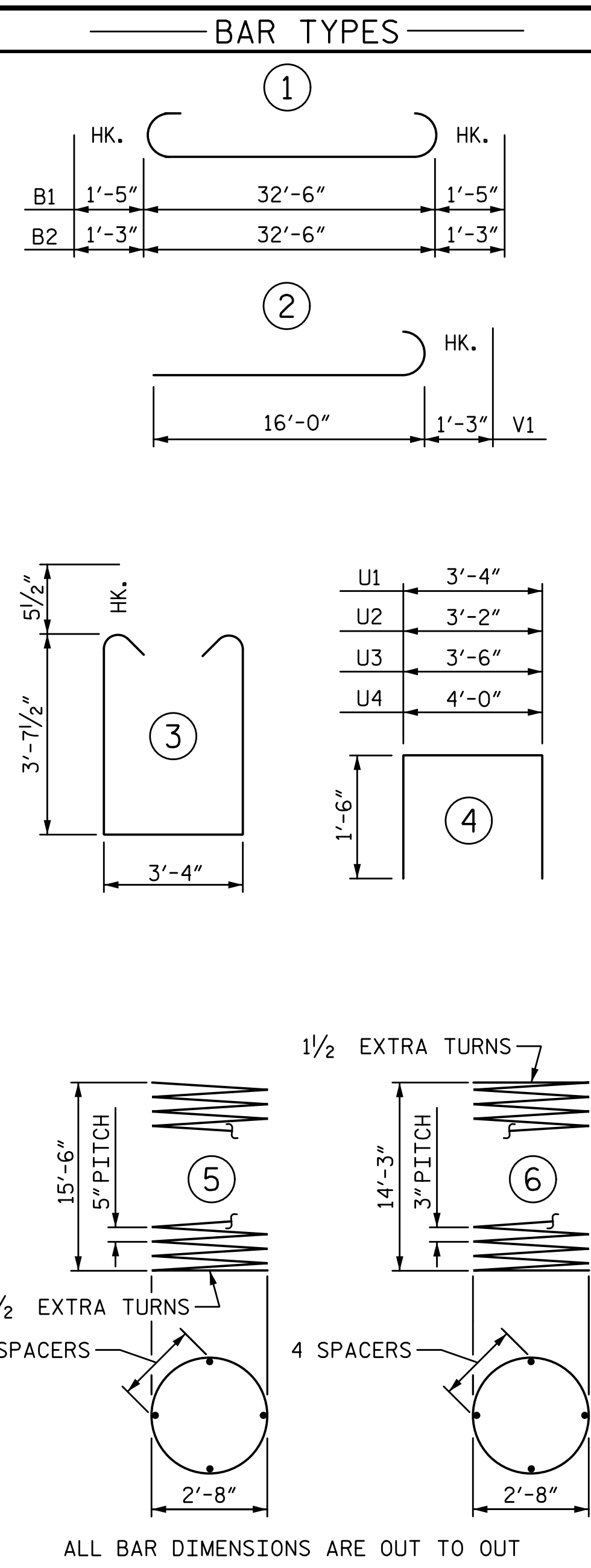
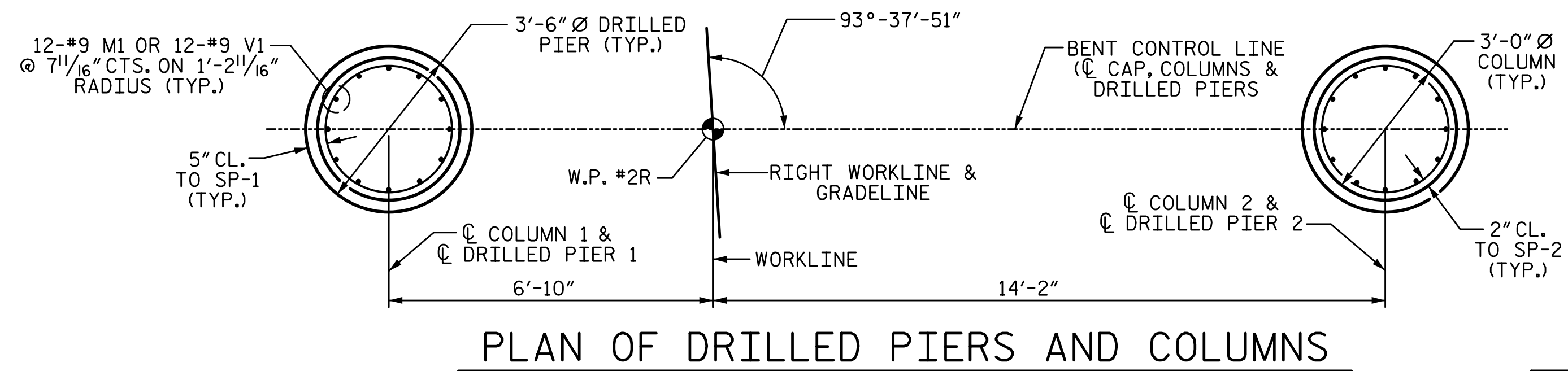
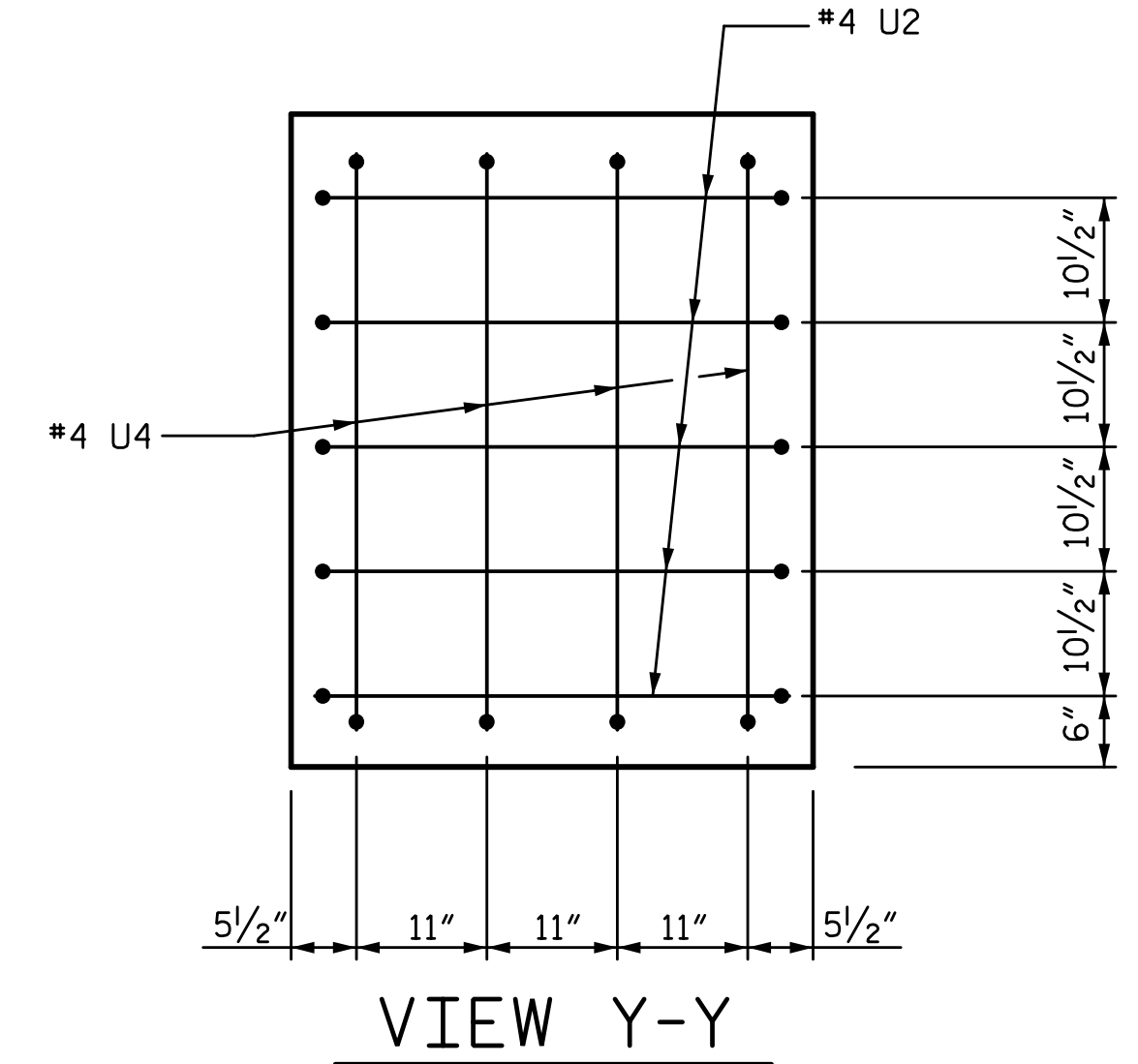
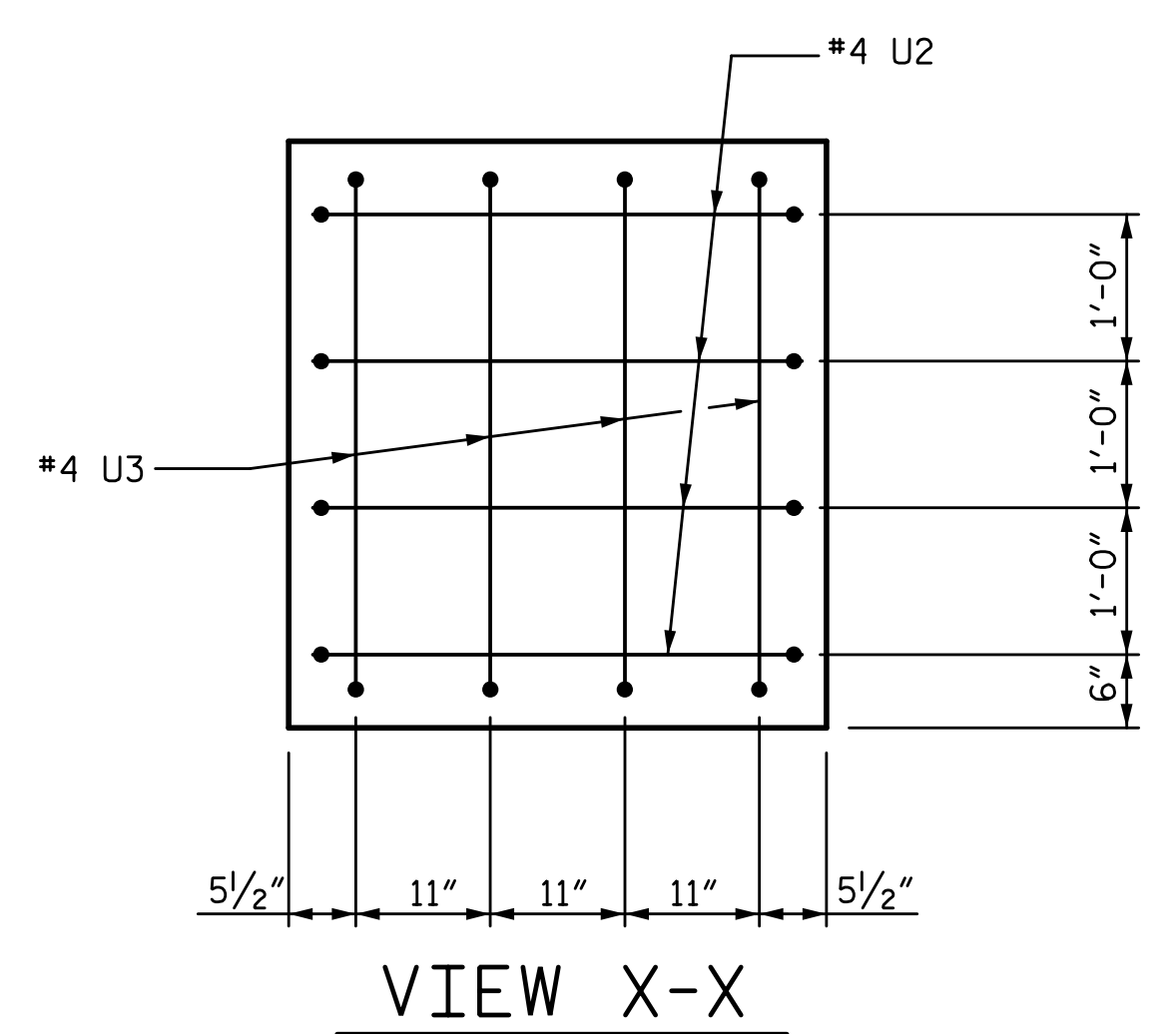
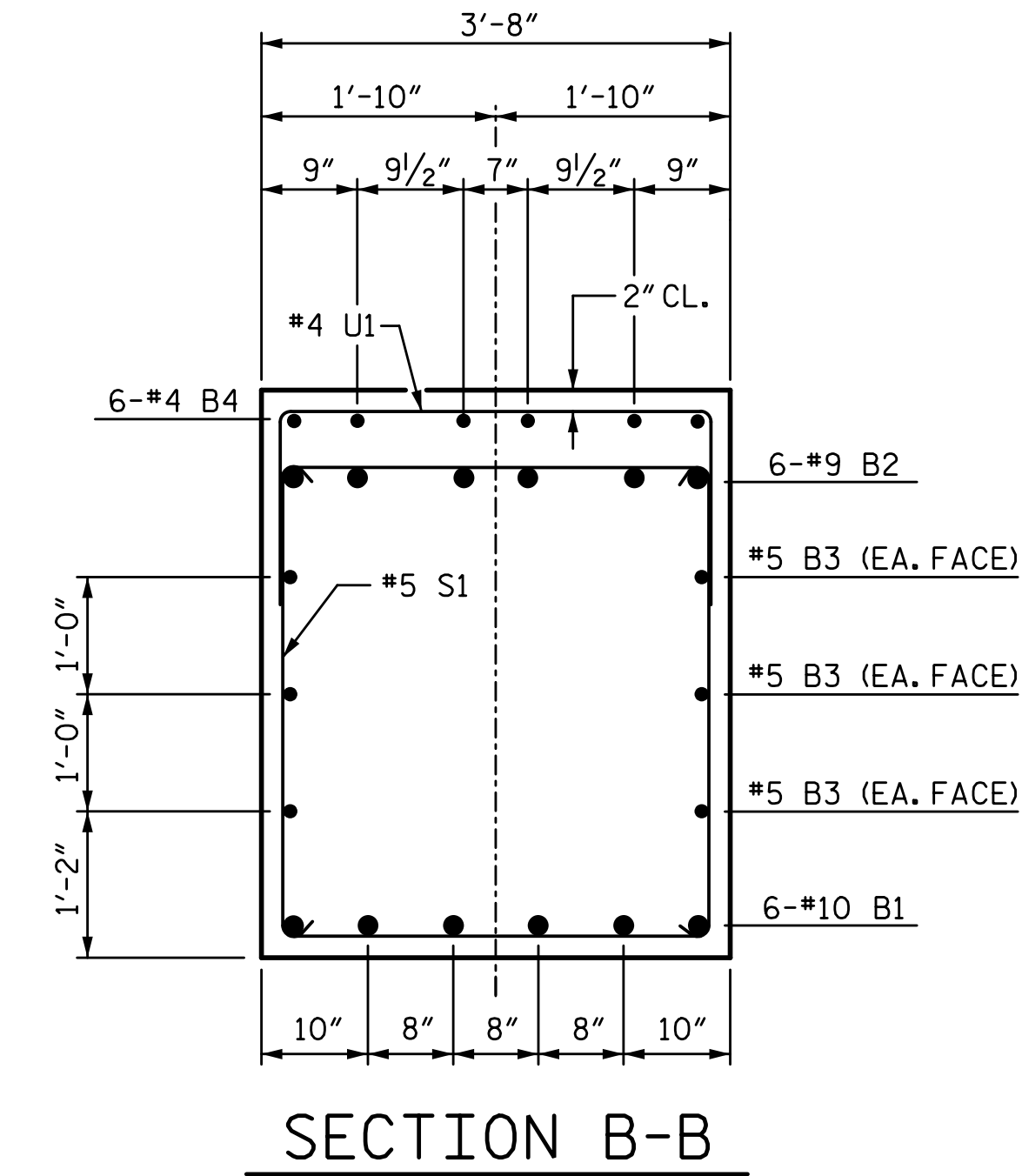
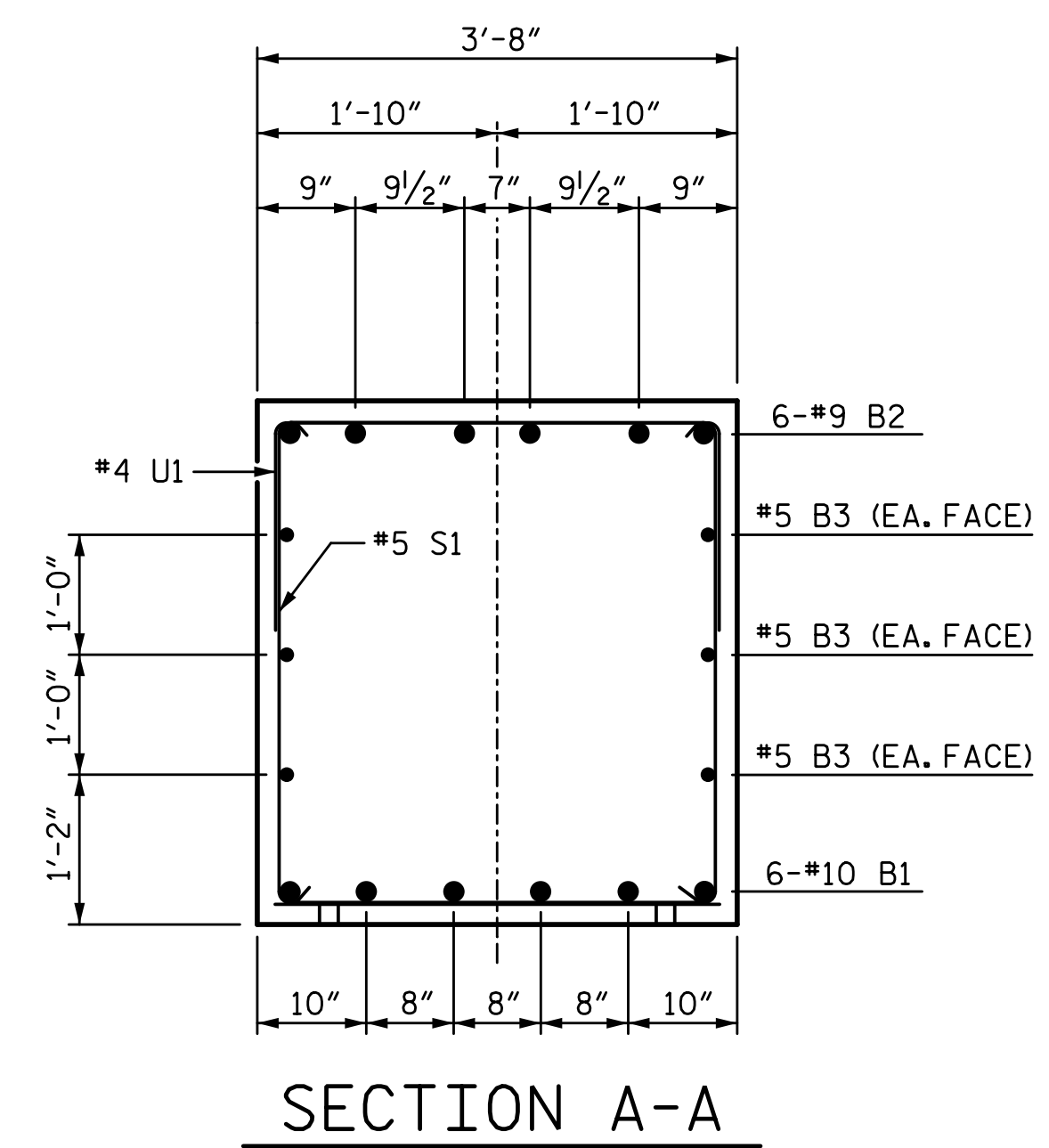
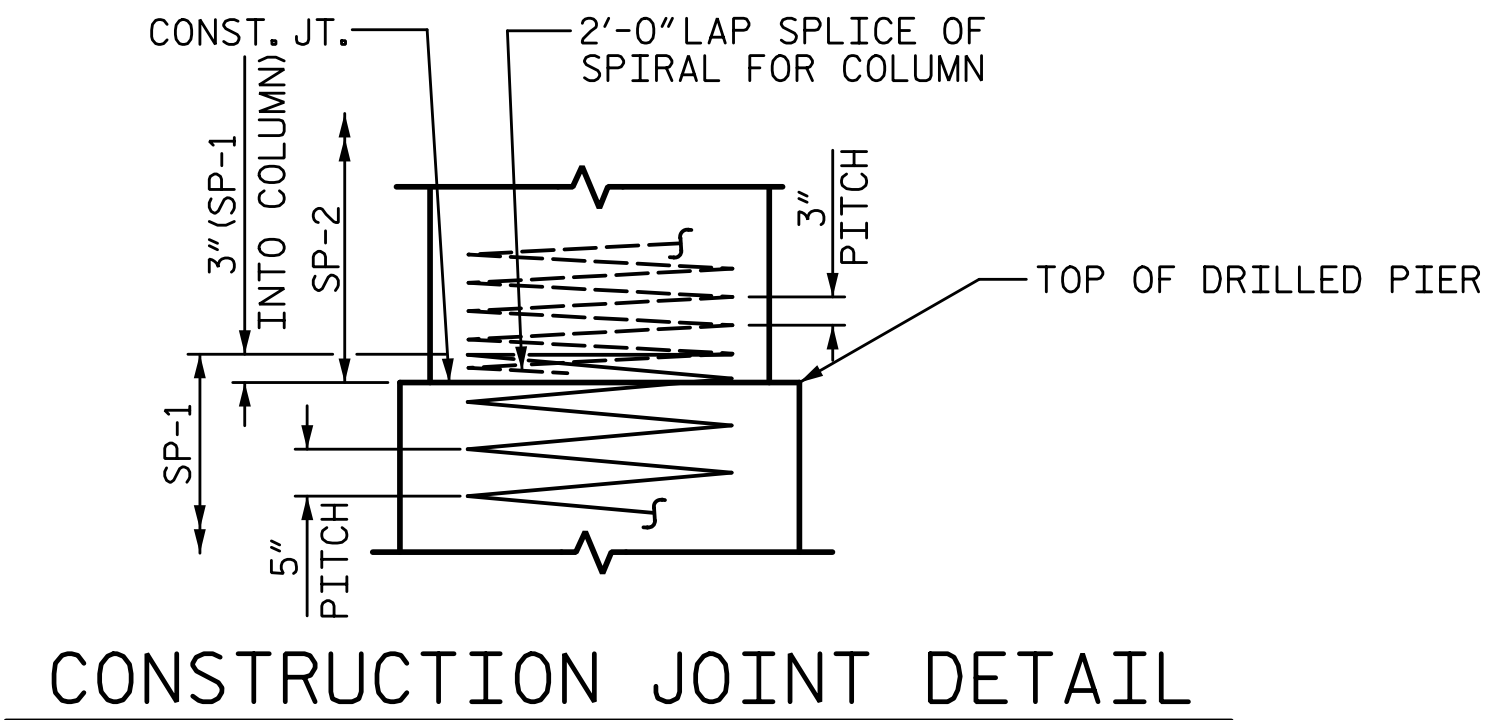
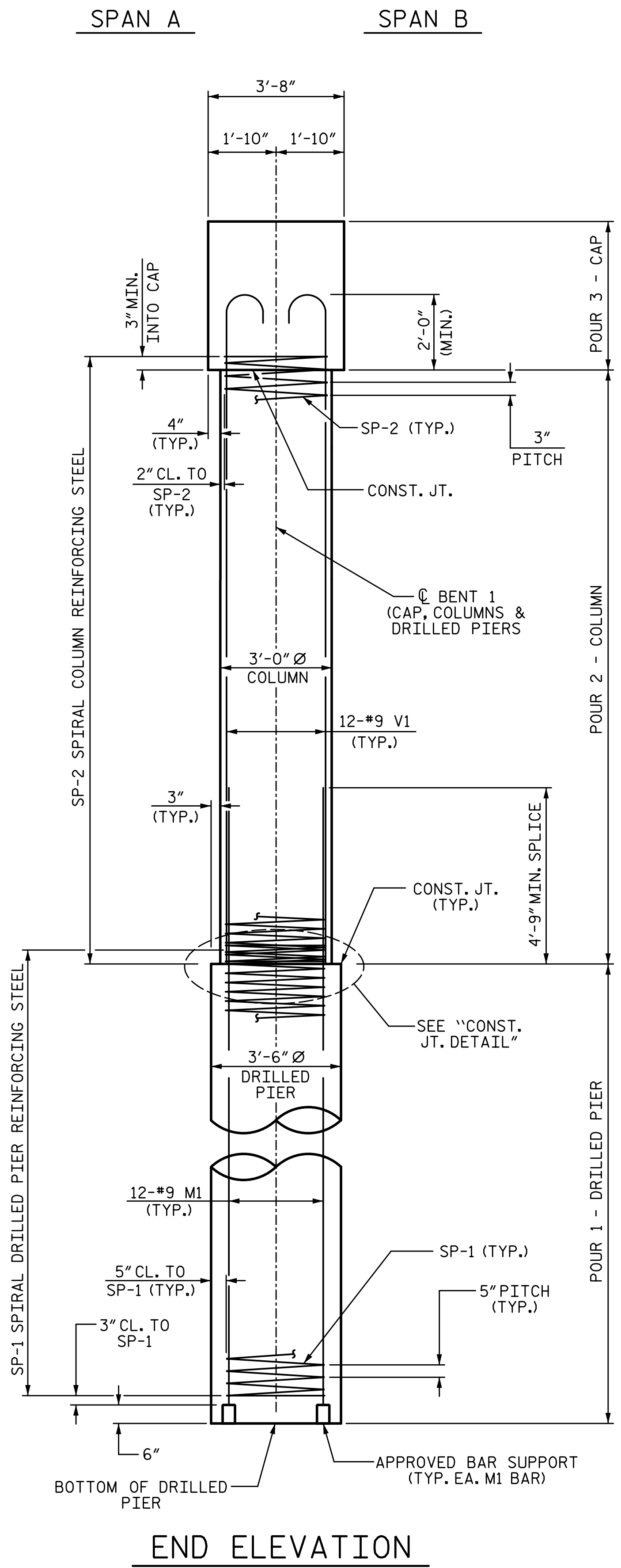


1/14/2020 10:06:27 AM G:\Projects\2017\I-5711\Structures\Drawings\Final\4015711-SMJ-B1-RT-000177.dgn



BILL OF MATERIAL					
BENT 1					
BAR	NO.	SIZE	TYPE	LENGTH	WEIGHT
B1	6	#10	1	35'-4"	912
B2	6	#9	1	35'-0"	714
B3	6	#5	STR	32'-8"	204
B4	6	#4	STR	10'-6"	42
B5	6	#4	STR	7'-4"	29
M1	24	#9	STR	23'-3"	1897
S1	49	#5	3	11'-6"	588
U1	33	#4	4	6'-4"	140
U2	9	#4	4	6'-2"	37
U3	4	#4	4	6'-6"	17
U4	4	#4	4	7'-0"	19
V1	24	#9	2	17'-3"	1408
SP-1	2	**	5	320'-10"	669
SP-2	2	*	6	486'-10"	650
REINFORCING STEEL					6007 LB
SPIRAL COL. REINF. STEEL					1319 LB
CLASS "A" CONCRETE BREAKDOWN					
POUR 2 (COLUMNS)					7.4 CY
POUR 3 (CAP)					19.1 CY
TOTAL					26.5 CY
DRILLED PIERS:					
DRILLED PIER CONCRETE					
POUR 1 (DRILLED PIERS)					11.5 CY
3'-6" Ø DRILLED PIER NOT IN SOIL					22 LF
3'-6" Ø DRILLED PIER IN SOIL					10 LF
CSL TUBES					140 LF

* THE "SP-1" SPIRAL REINFORCING STEEL SHALL BE W21 OR D-31 COLD DRAWN WIRE OR #5 PLAIN OR DEFORMED BAR.

* THE "SP-2" SPIRAL REINFORCING STEEL SHALL BE W20 OR D-20 COLD DRAWN WIRE OR #4 PLAIN OR DEFORMED BAR.

PROJECT NO. I-5711

ALAMANCE COUNTY

STATION: STA. 27+02.26 -L-

SHEET 2 OF 2

STATE OF NORTH CAROLINA
DEPARTMENT OF TRANSPORTATION
RALEIGH
SUBSTRUCTURE

BENT 1

RIGHT WIDENING

REVISIONS

NO.	BY:	DATE:	NO.	BY:	DATE:
1			3		
2			4		

SHEET NO. S-51

TOTAL SHEETS 89

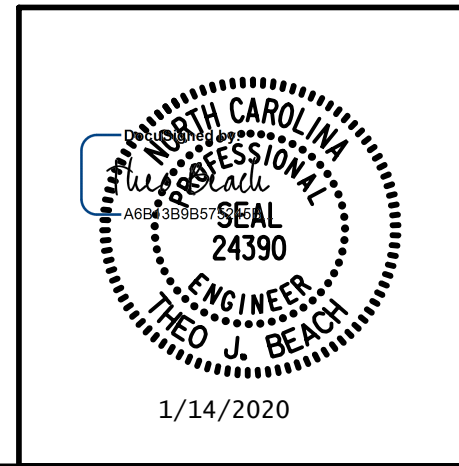
DRAWN BY: S.D. COOPER DATE: 1-20

CHECKED BY: T. BEACH DATE: 1-20

DESIGN ENGINEER OF RECORD: T. BEACH DATE: 1-20

PLANS PREPARED BY:

S&A
SIMPSON ENGINEERS & ASSOCIATES
5640 Dillard Drive
Suite 200
Cary, NC 27518
(919) 852-0468
(919) 852-0538 (Fax)
www.simpsonengr.com
LICENSURE NO. C-2521



DOCUMENT NOT CONSIDERED FINAL UNLESS ALL SIGNATURES COMPLETED