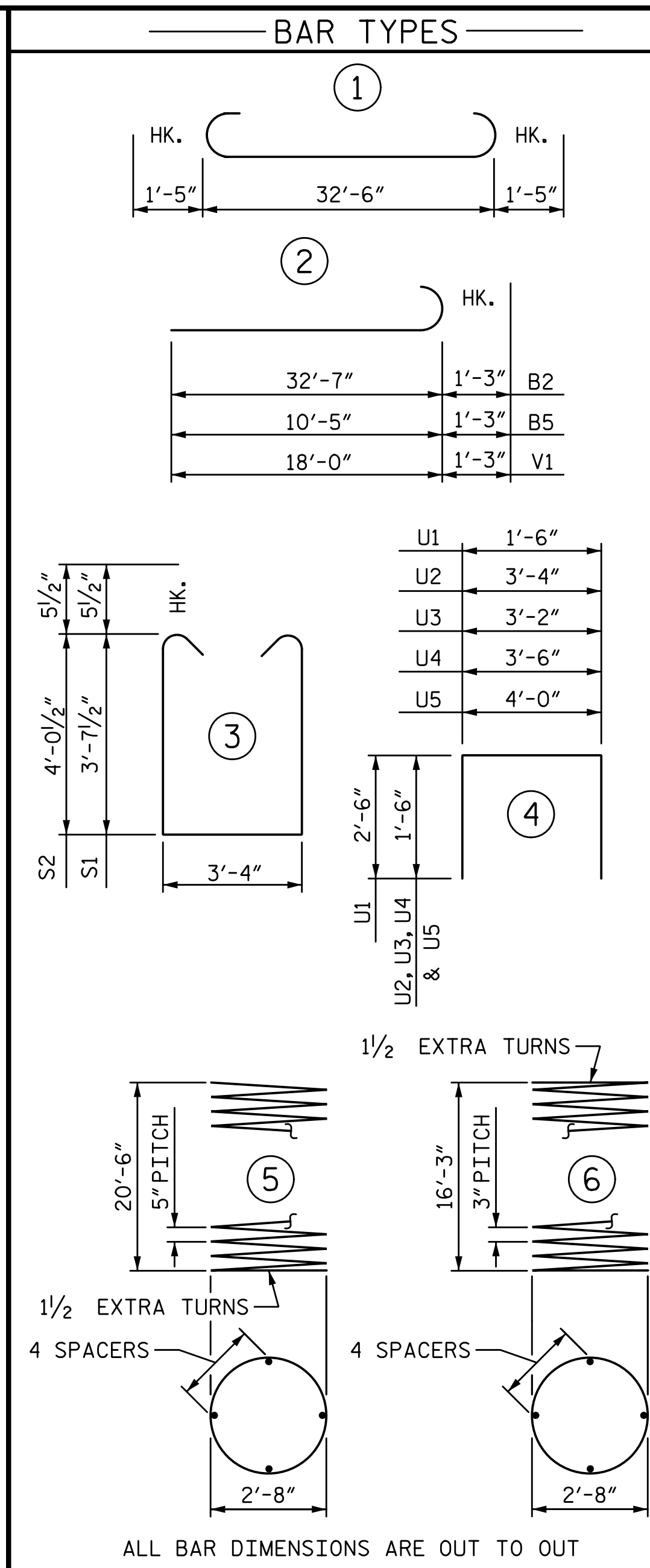
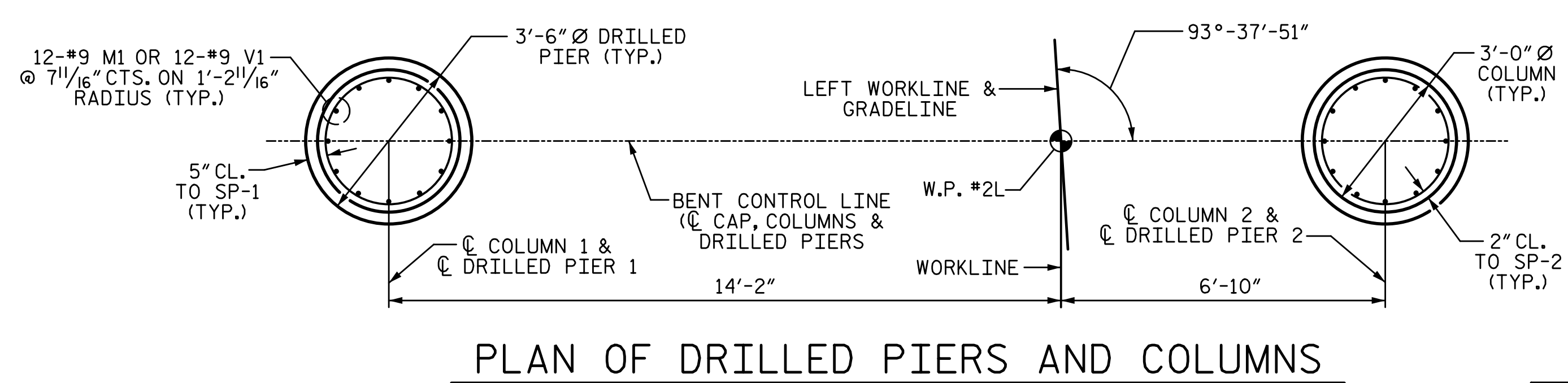
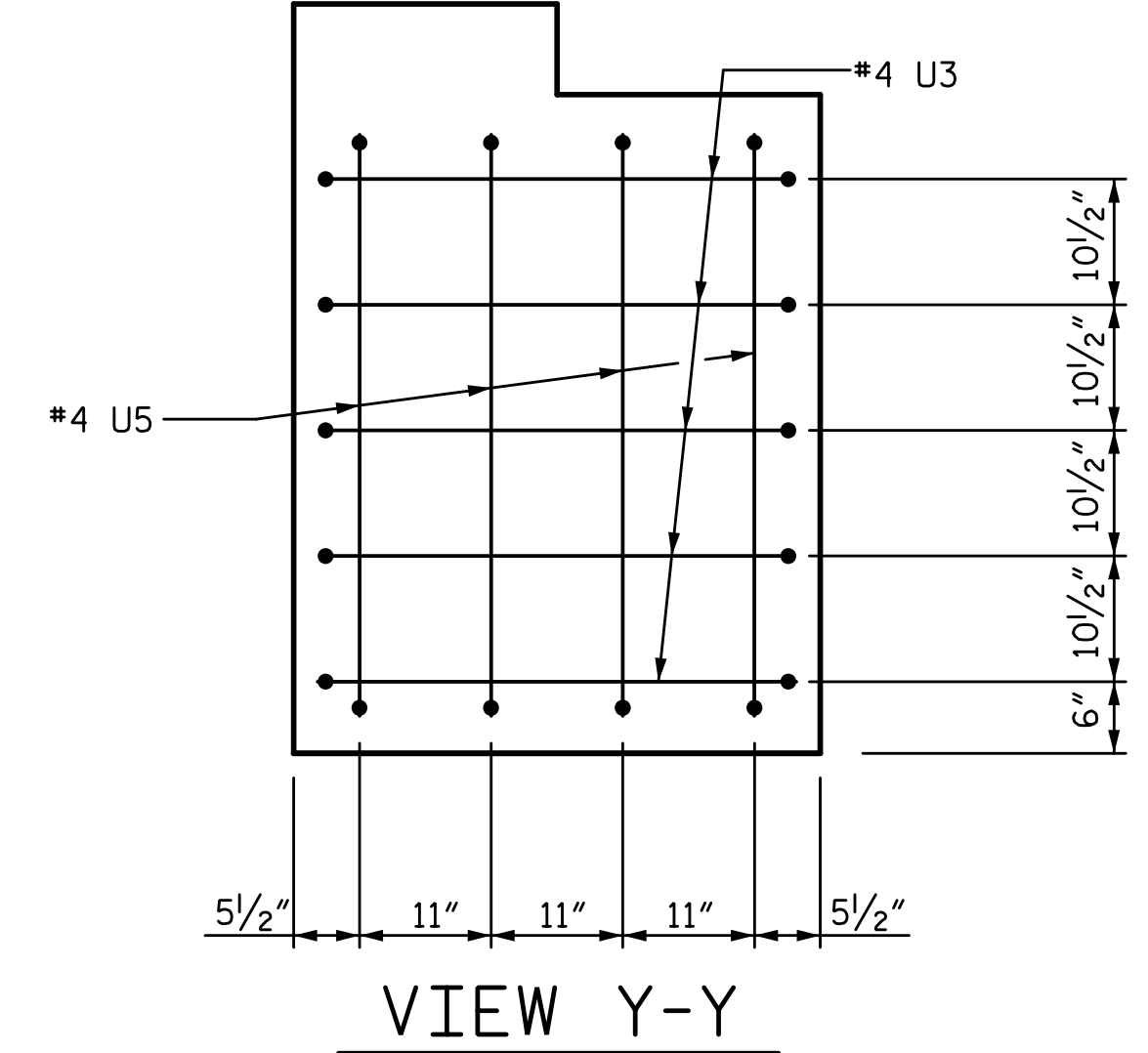
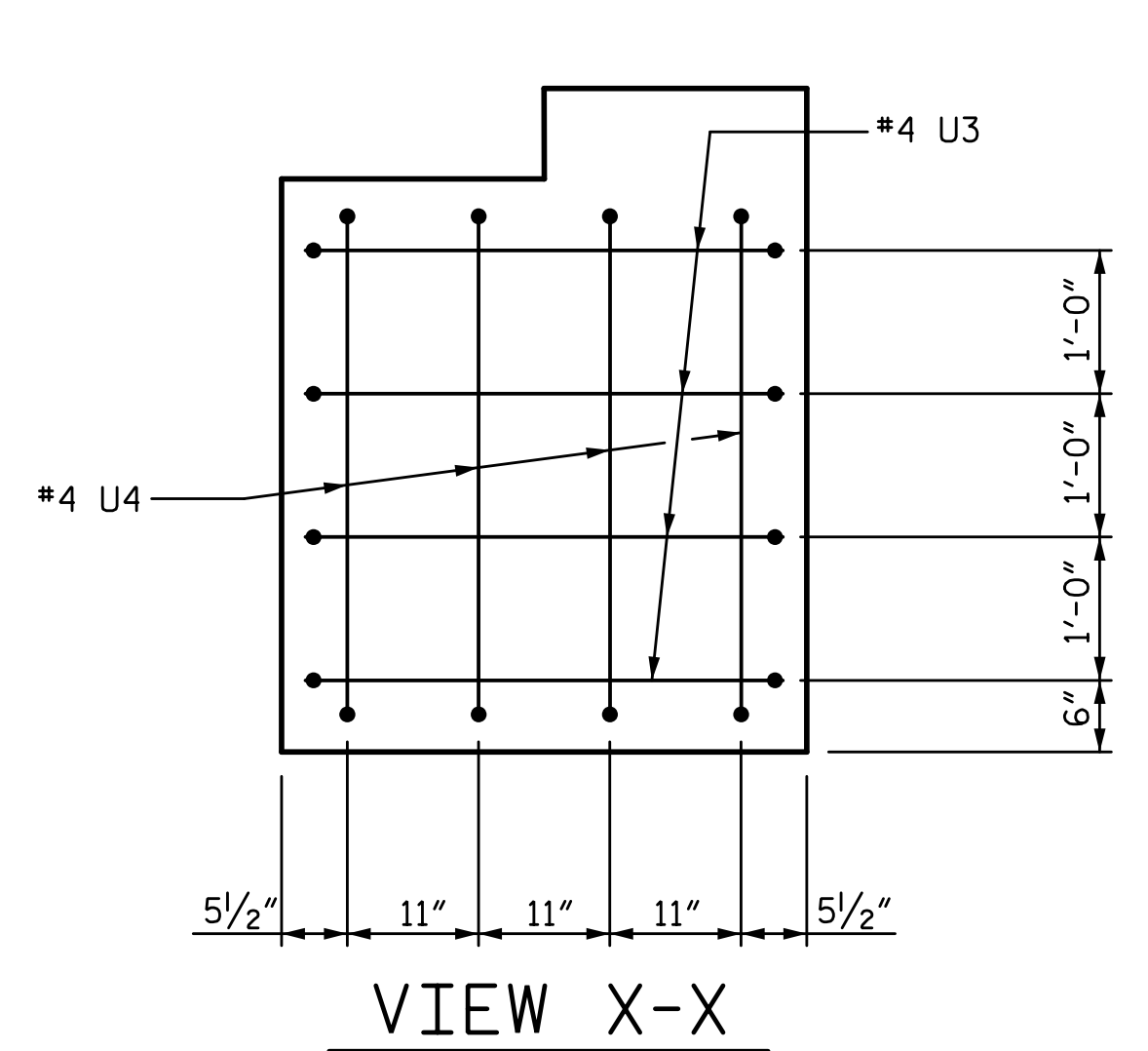
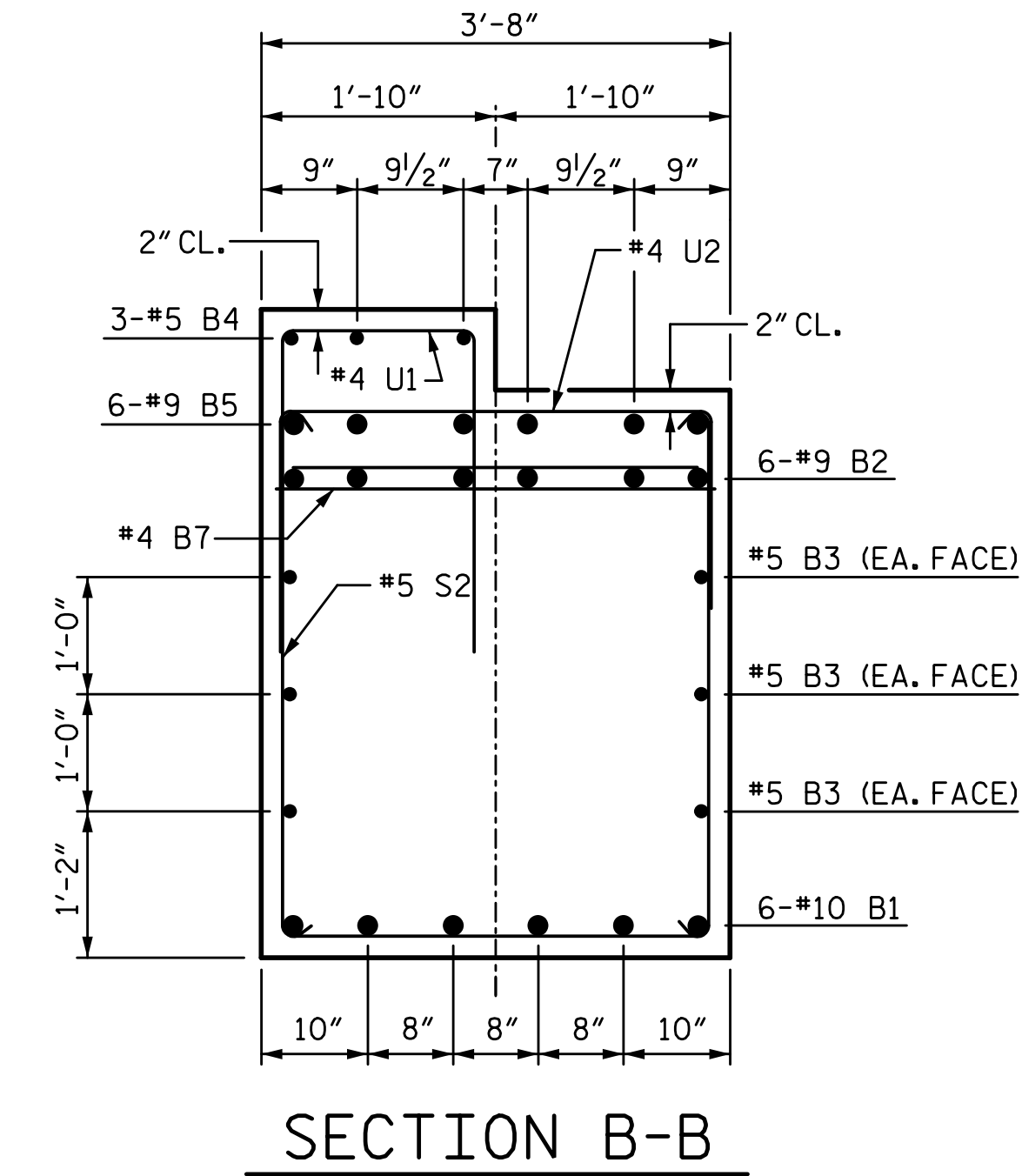
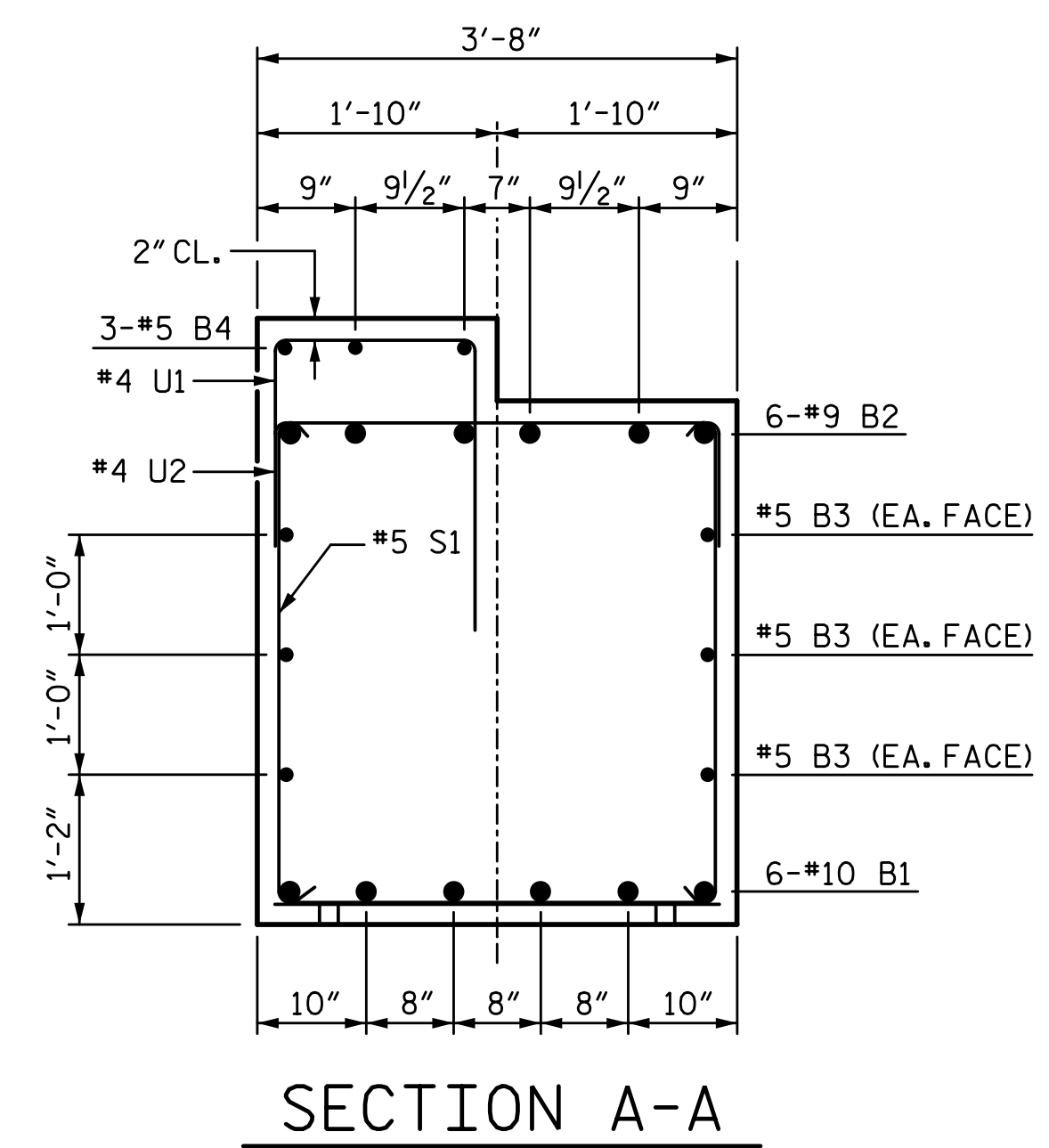
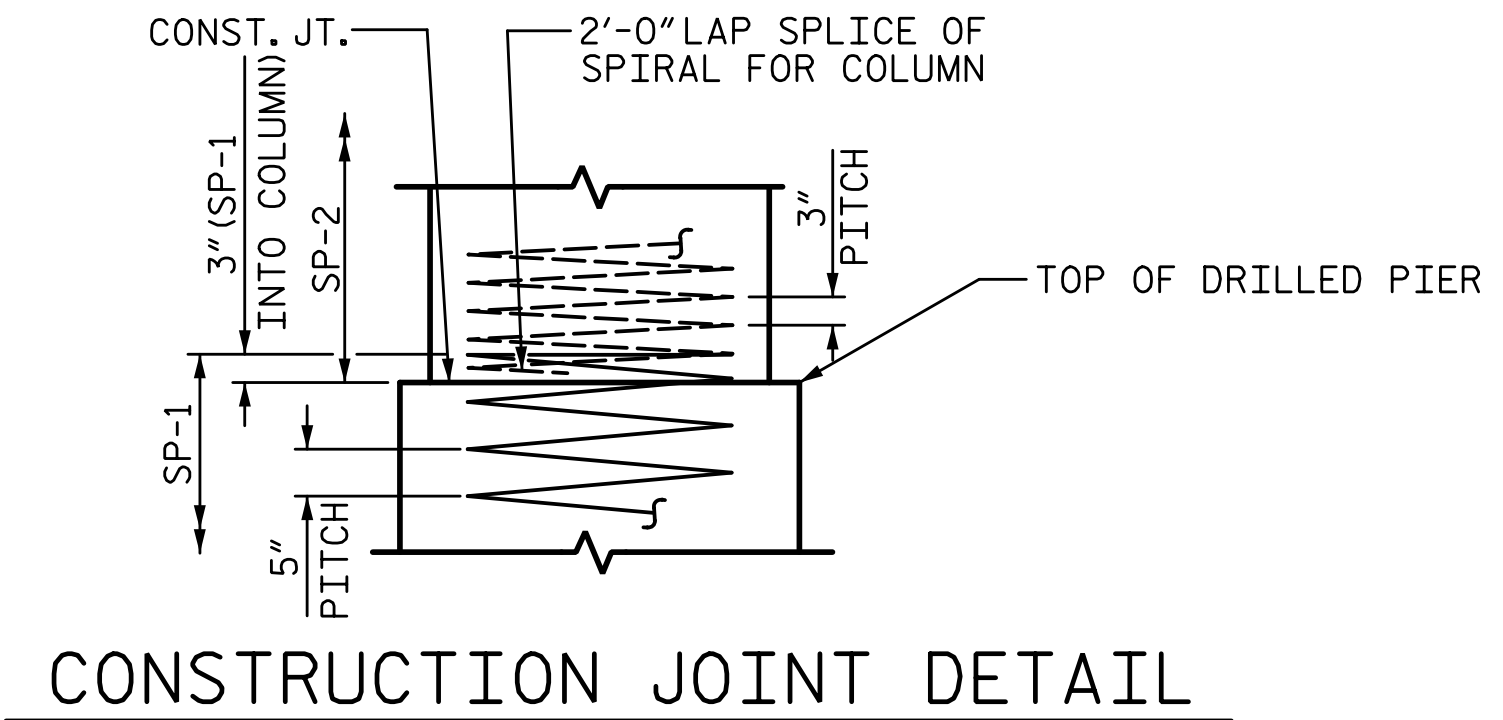
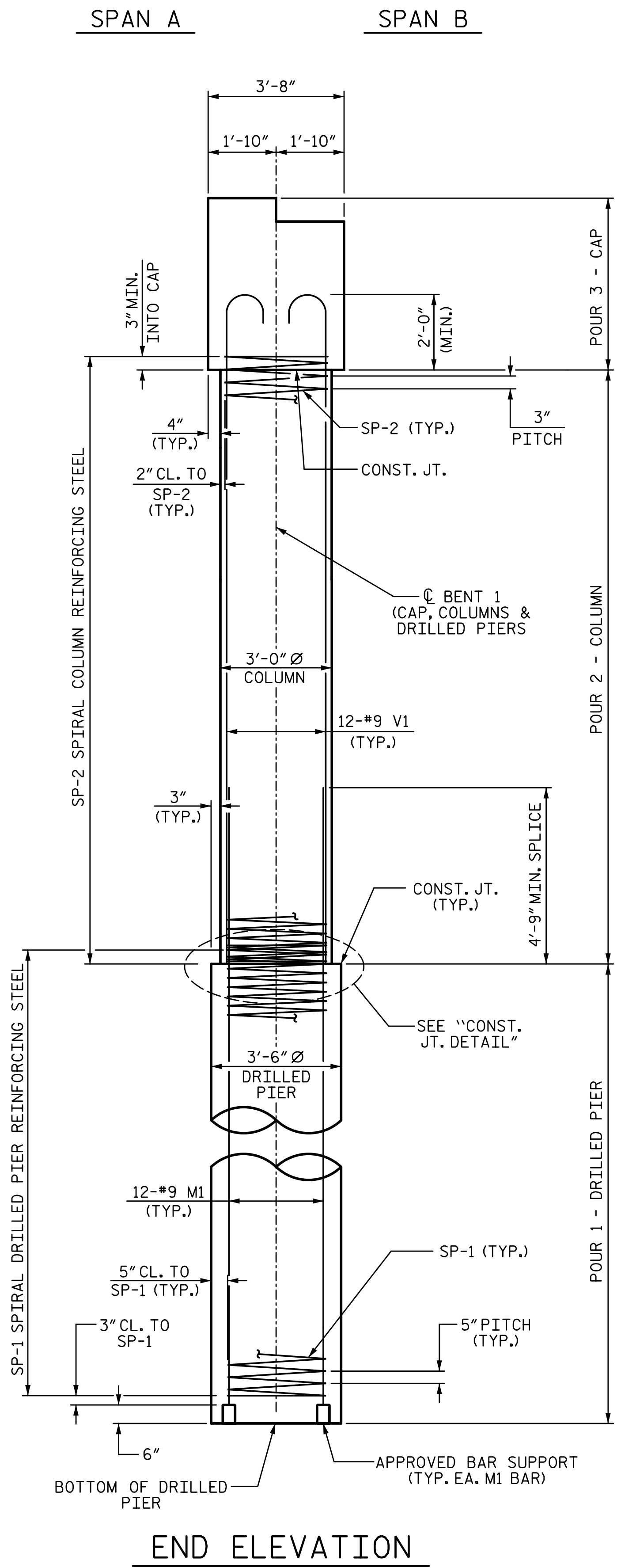


1/14/2020 10:06:26 AM G:\Projects\2017\I-5711\Structures\Drawings\Final\4015711-SMJ_B1-LT_000177.dgn



BILL OF MATERIAL					
BENT 1					
BAR NO.	SIZE	TYPE	LENGTH	WEIGHT	
B1	#10	1	35'-4"	912	
B2	#9	2	33'-10"	690	
B3	#5	STR	32'-8"	204	
B4	#5	STR	7'-4"	92	
B5	#9	2	11'-8"	238	
B6	#5	STR	3'-2"	10	
B7	#4	STR	3'-4"	9	
B8	#4	STR	7'-4"	29	
M1	#9	2	28'-3"	2305	
S1	#5	3	11'-6"	360	
S2	#5	3	12'-4"	244	
U1	#4	4	6'-6"	178	
U2	#4	4	6'-4"	123	
U3	#4	4	6'-2"	37	
U4	#4	4	6'-6"	17	
U5	#4	4	7'-0"	19	
V1	#9	2	19'-3"	1571	
SP-1	**	5	419'-6"	875	
SP-2	*	6	552'-10"	739	
REINFORCING STEEL				7038	LB
SPIRAL COL. REINF. STEEL				1614	LB
CLASS "A" CONCRETE BREAKDOWN					
POUR 2 (COLUMNS)				8.4	CY
POUR 3 (CAP)				20.6	CY
TOTAL				29.0	CY
DRILLED PIERS:					
DRILLED PIER CONCRETE					
POUR 1 (DRILLED PIERS)				15.0	CY
3'-6" Ø DRILLED PIER NOT IN SOIL				14	LF
3'-6" Ø DRILLED PIER IN SOIL				28	LF
CSL TUBES				180	LF

* THE "SP-1" SPIRAL REINFORCING STEEL SHALL BE W21 OR D-31 COLD DRAWN WIRE OR #5 PLAIN OR DEFORMED BAR.
 * THE "SP-2" SPIRAL REINFORCING STEEL SHALL BE W20 OR D-20 COLD DRAWN WIRE OR #4 PLAIN OR DEFORMED BAR.

PROJECT NO. I-5711
ALAMANCE COUNTY
 STATION: STA. 27+02.26 -L-

SHEET 2 OF 2

STATE OF NORTH CAROLINA
 DEPARTMENT OF TRANSPORTATION
 RALEIGH
 SUBSTRUCTURE

BENT 1

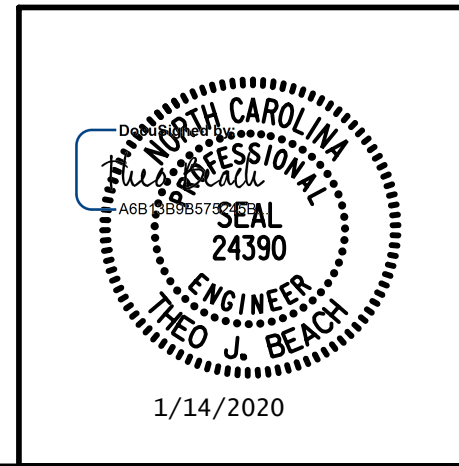
LEFT WIDENING

REVISIONS					
NO.	BY:	DATE:	NO.	BY:	DATE:
1			3		
2			4		

SHEET NO. S-49
 TOTAL SHEETS 89

DRAWN BY: S.D. COOPER DATE: 1-20
 CHECKED BY: T. BEACH DATE: 1-20
 DESIGN ENGINEER OF RECORD: T. BEACH DATE: 1-20

PLANS PREPARED BY:
S&A
 SIMPSON ENGINEERS & ASSOCIATES
 5640 Dillard Drive
 Suite 200
 Cary, NC 27518
 (919) 852-0468
 (919) 852-0538 (Fax)
 www.simpsonengr.com
 LICENSURE NO. C-2521



DOCUMENT NOT CONSIDERED FINAL UNLESS ALL SIGNATURES COMPLETED