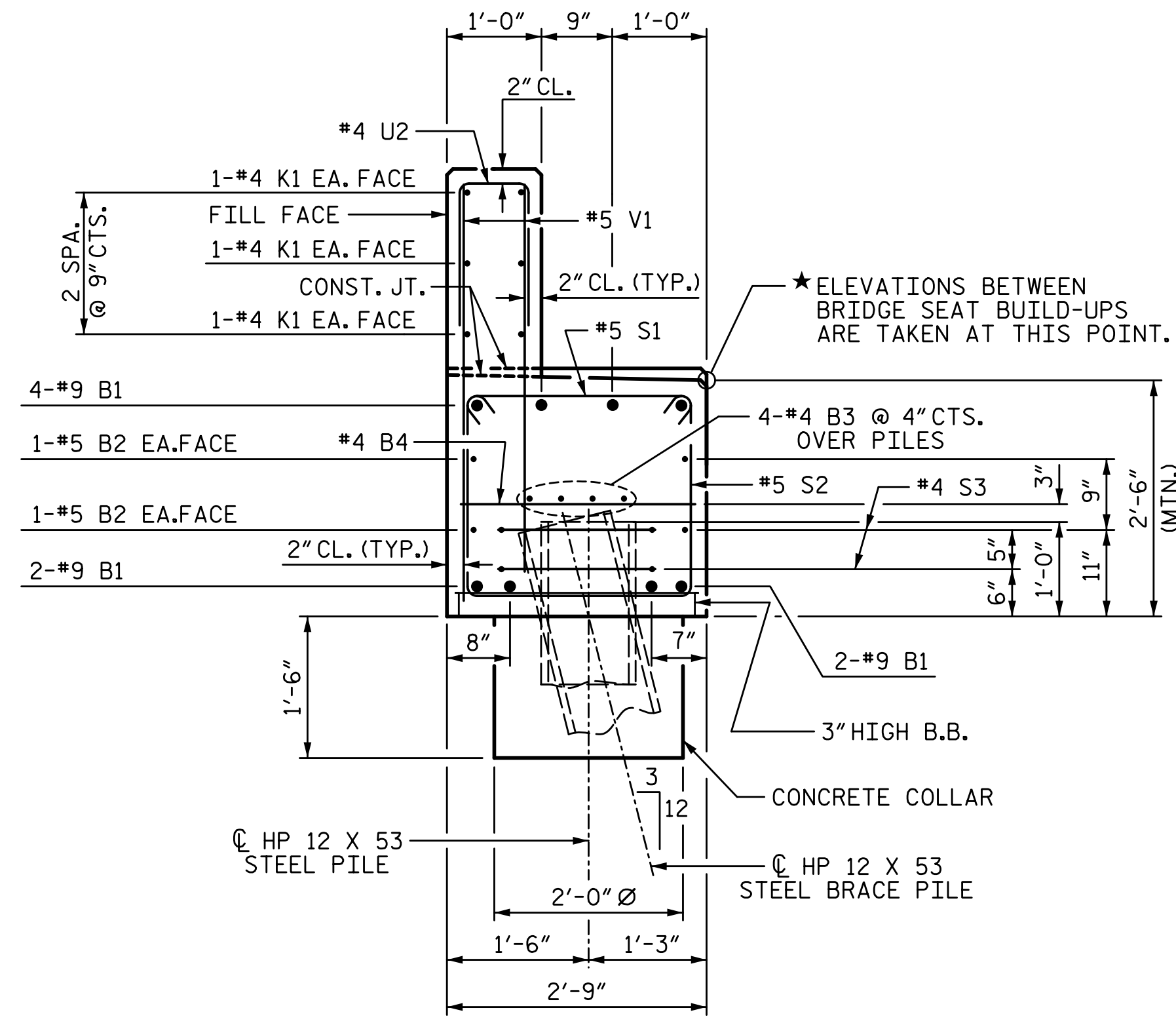
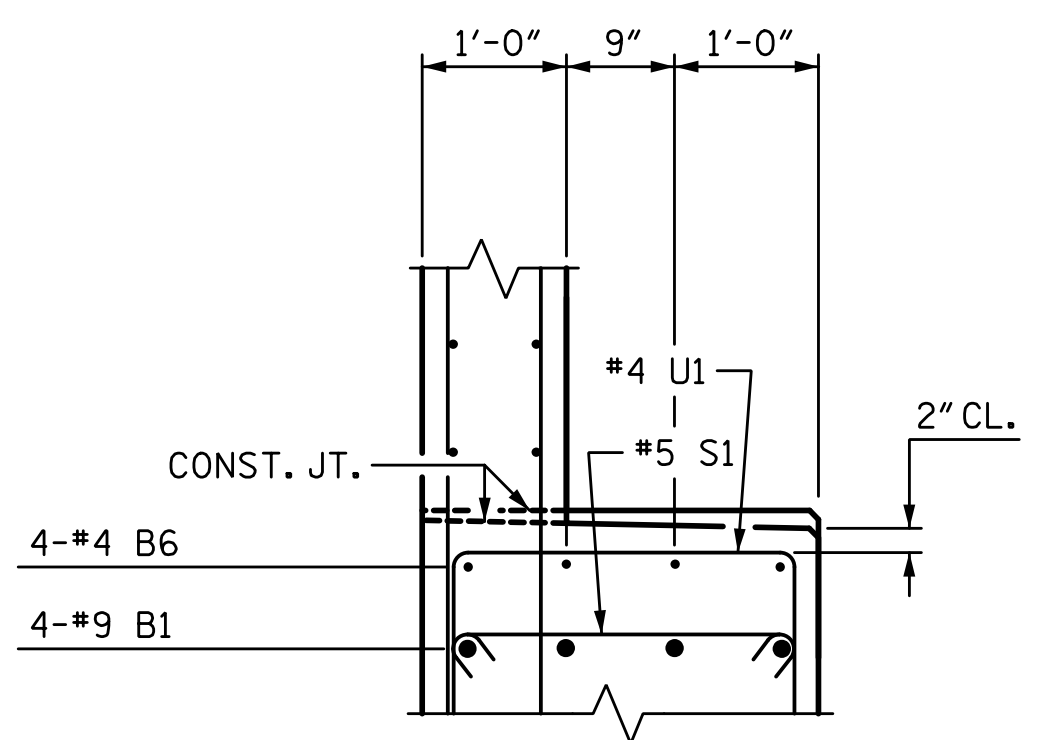


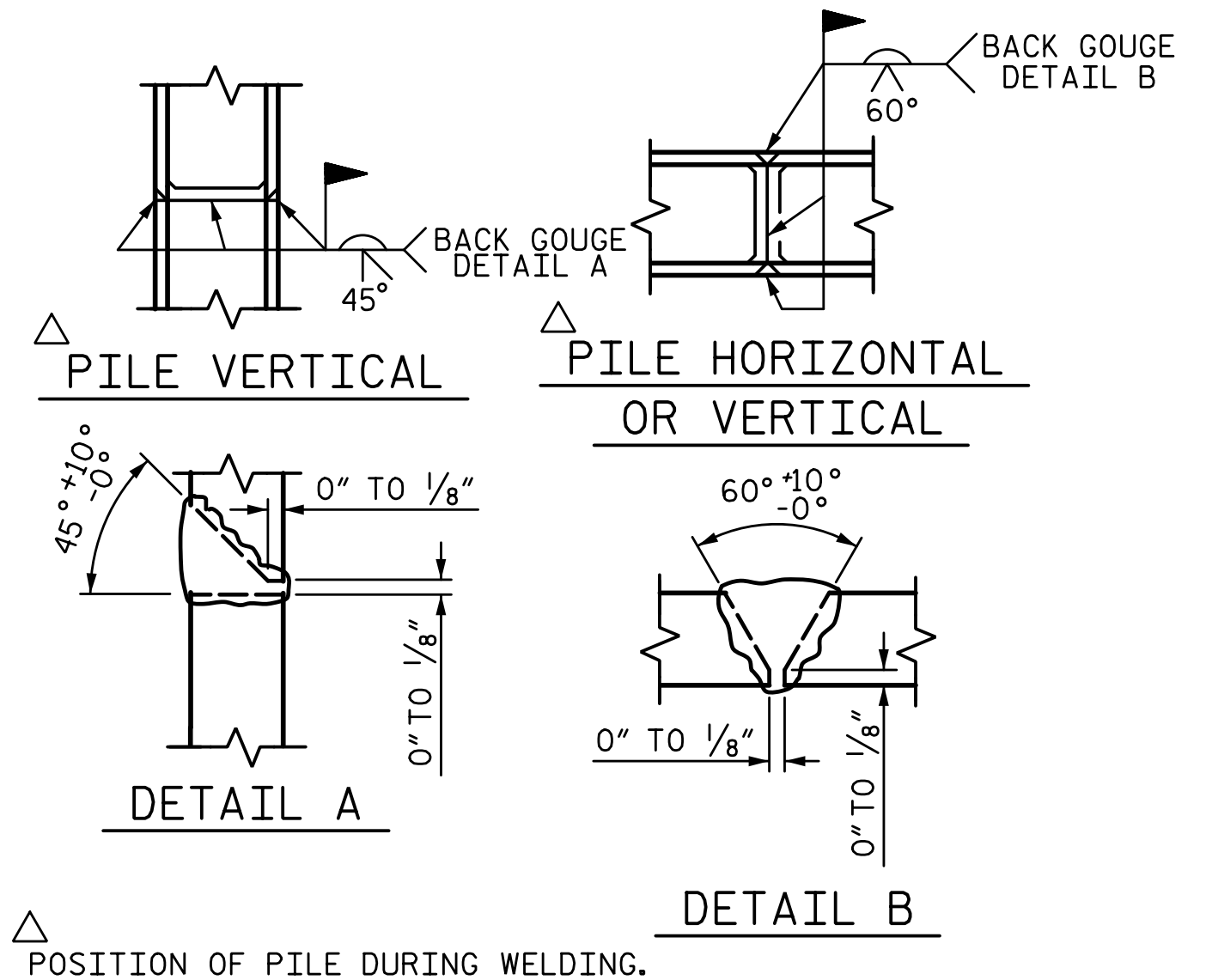
1/14/2020 10:06:26 AM G:\Projects\2017\I-5711\Structures\Drawings\Final\401-I5711-SMJ-EB1-RT_000171.dgn



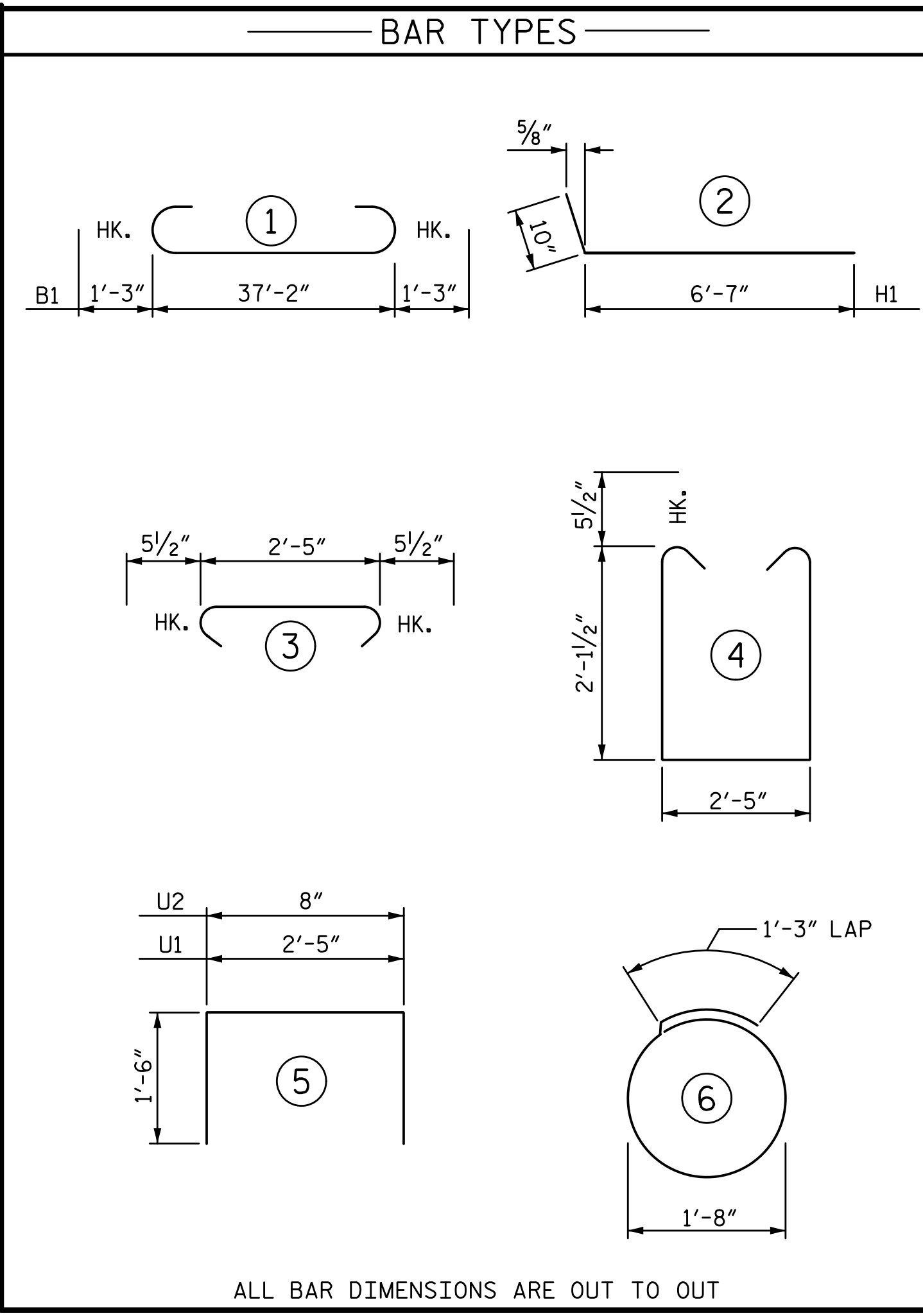
SECTION A-A



SECTION B-B

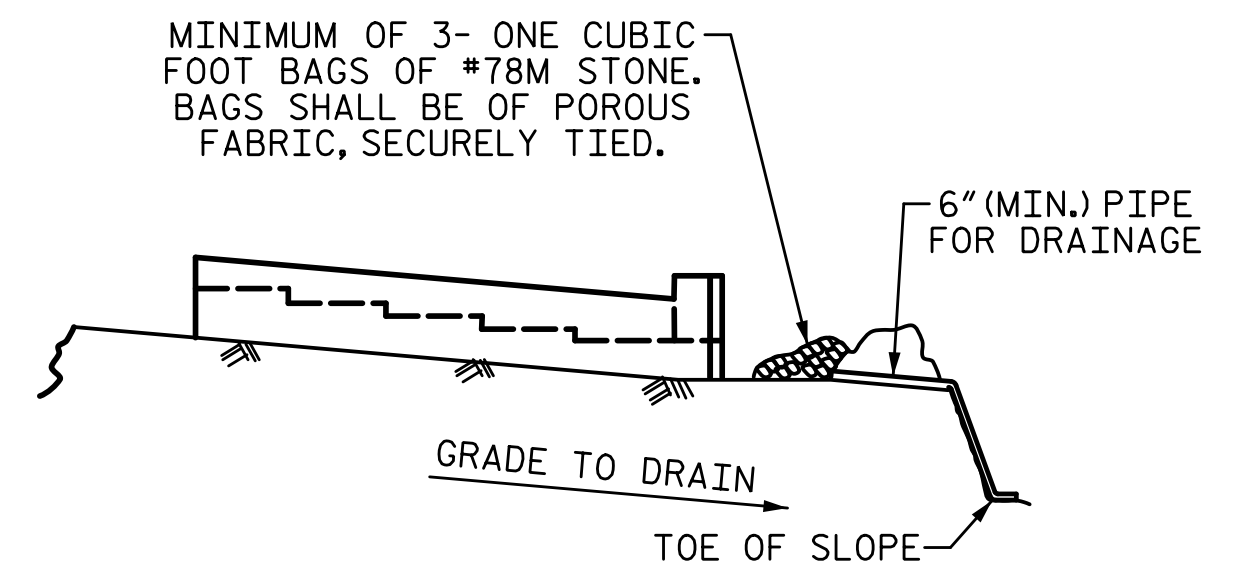


PILE SPLICE DETAILS



ALL BAR DIMENSIONS ARE OUT TO OUT

BILL OF MATERIAL					
END BENT 1					
BAR	NO.	SIZE	TYPE	LENGTH	WEIGHT
B1	8	#9	1	39'-8"	1079
B2	4	#5	STR	37'-4"	156
B3	8	#4	STR	19'-11"	106
B4	10	#4	STR	2'-5"	16
B5	8	#4	STR	2'-2"	12
B6	4	#4	STR	14'-6"	39
H1	18	#4	2	7'-5"	89
K1	12	#4	STR	19'-11"	160
K2	6	#4	STR	3'-10"	15
S1	40	#5	3	3'-4"	139
S2	40	#5	4	7'-7"	316
S3	10	#4	6	6'-6"	43
U1	16	#4	5	5'-5"	58
U2	34	#4	5	3'-8"	83
V1	68	#5	STR	4'-2"	296
V2	26	#4	STR	6'-2"	107
TOTAL REINFORCING STEEL					2714 LB
CLASS A CONCRETE					
POUR 1 (CAP, COLLARS & LOWER WING)					12.1 CY
POUR 2 (BACKWALL & UPPER WING)					4.1 CY
TOTAL CLASS A CONCRETE					16.2 CY
HP 12 X 53 STEEL PILES					
NO. 4					100 LF
STEEL PILE POINTS					4 EA.
PILE DRIVING EQUIPMENT					
SETUP FOR HP 12 X 53 STEEL PILES					NO. 4



BAGGED STONE AND PIPE SHALL BE PLACED IMMEDIATELY AFTER COMPLETION OF END BENT EXCAVATION. PIPE MAY BE EITHER CONCRETE, CORRUGATED STEEL, CORRUGATED ALUMINUM ALLOY, OR CORRUGATED PLASTIC. PERFORATED PIPE WILL NOT BE ALLOWED.

BAGGED STONE SHALL REMAIN IN PLACE UNTIL THE ENGINEER DIRECTS THAT IT BE REMOVED. THE CONTRACTOR SHALL REMOVE AND DISPOSE OF SILT ACCUMULATIONS AT BAGGED STONE WHEN SO DIRECTED BY THE ENGINEER. BAGS SHALL BE REMOVED AND REPLACED WHENEVER THE ENGINEER DETERMINES THAT THEY HAVE DETERIORATED AND LOST THEIR EFFECTIVENESS.

NO SEPARATE PAYMENT WILL BE MADE FOR THIS WORK AND THE ENTIRE COST OF THIS WORK SHALL BE INCLUDED IN THE UNIT CONTRACT PRICE BID FOR THE SEVERAL PAY ITEMS.

TEMPORARY DRAINAGE AT END BENT

PROJECT NO. I-5711
ALAMANCE COUNTY
 STATION: STA. 27+02.26 -L-

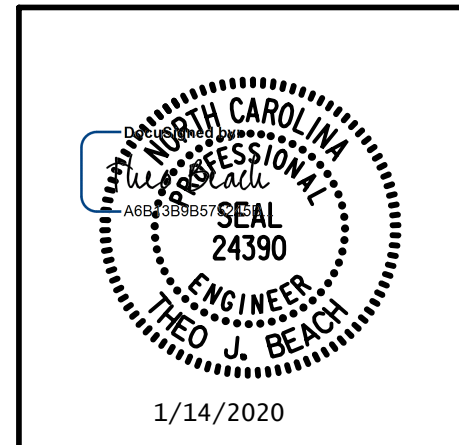
SHEET 3 OF 3

STATE OF NORTH CAROLINA
 DEPARTMENT OF TRANSPORTATION
 RALEIGH
 SUBSTRUCTURE
 END BENT 1
 RIGHT WIDENING

REVISIONS					
NO.	BY:	DATE:	NO.	BY:	DATE:
1			3		
2			4		

SHEET NO. S-47
 TOTAL SHEETS 89

PLANS PREPARED BY:
SE & A
 SIMPSON ENGINEERS & ASSOCIATES
 5640 Dillard Drive
 Suite 200
 Cary, NC 27518
 (919) 852-0468
 (919) 852-0598 (Fax)
 www.simpsonengr.com
 LICENSURE NO. C-2521



DRAWN BY: S.D. COOPER DATE: 1-20
 CHECKED BY: T. BEACH DATE: 1-20
 DESIGN ENGINEER OF RECORD: T. BEACH DATE: 1-20

DOCUMENT NOT CONSIDERED FINAL
 UNLESS ALL SIGNATURES COMPLETED