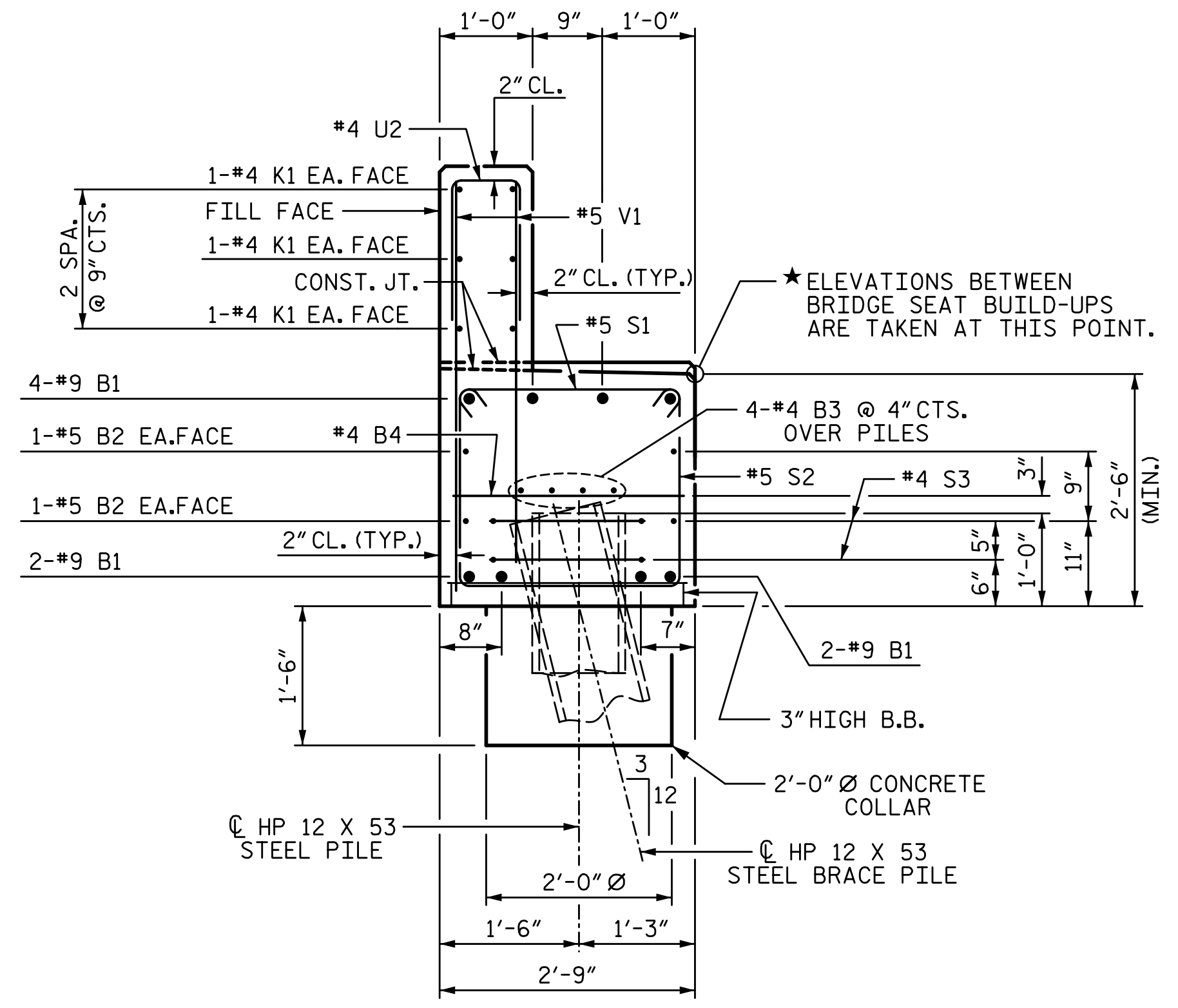
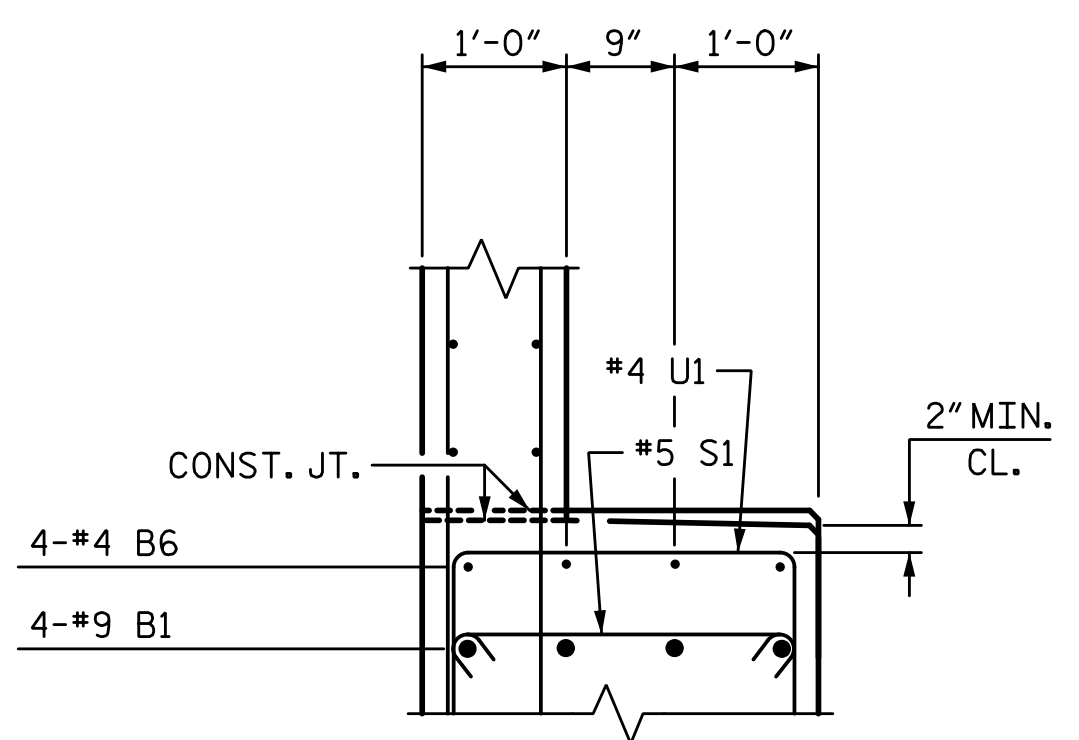


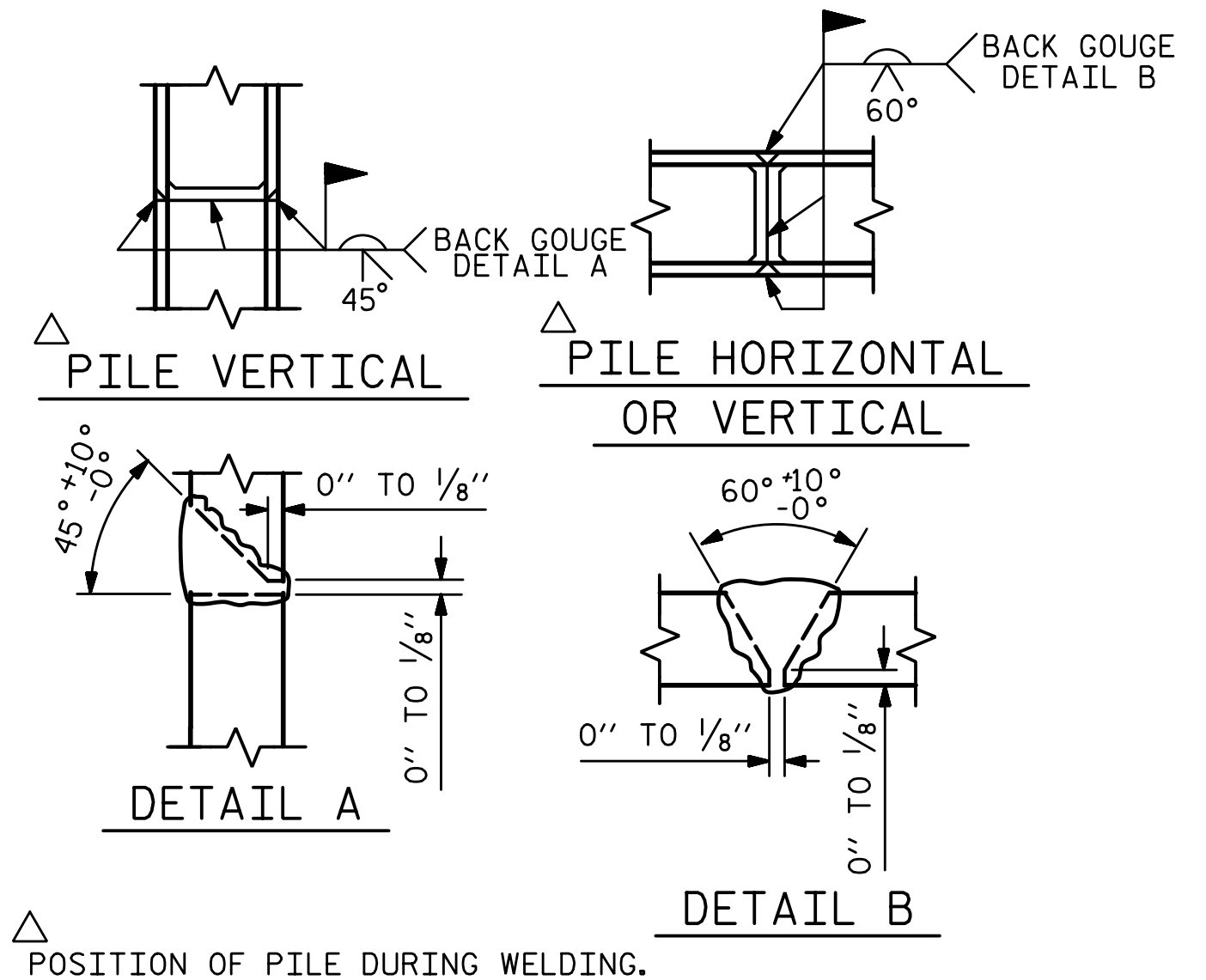
1/14/2020 10:06:25 AM G:\Projects\2017\I-5711\Structures\Drawings\Final\401-I5711-SMJ-EB1-L-T_000177.dgn



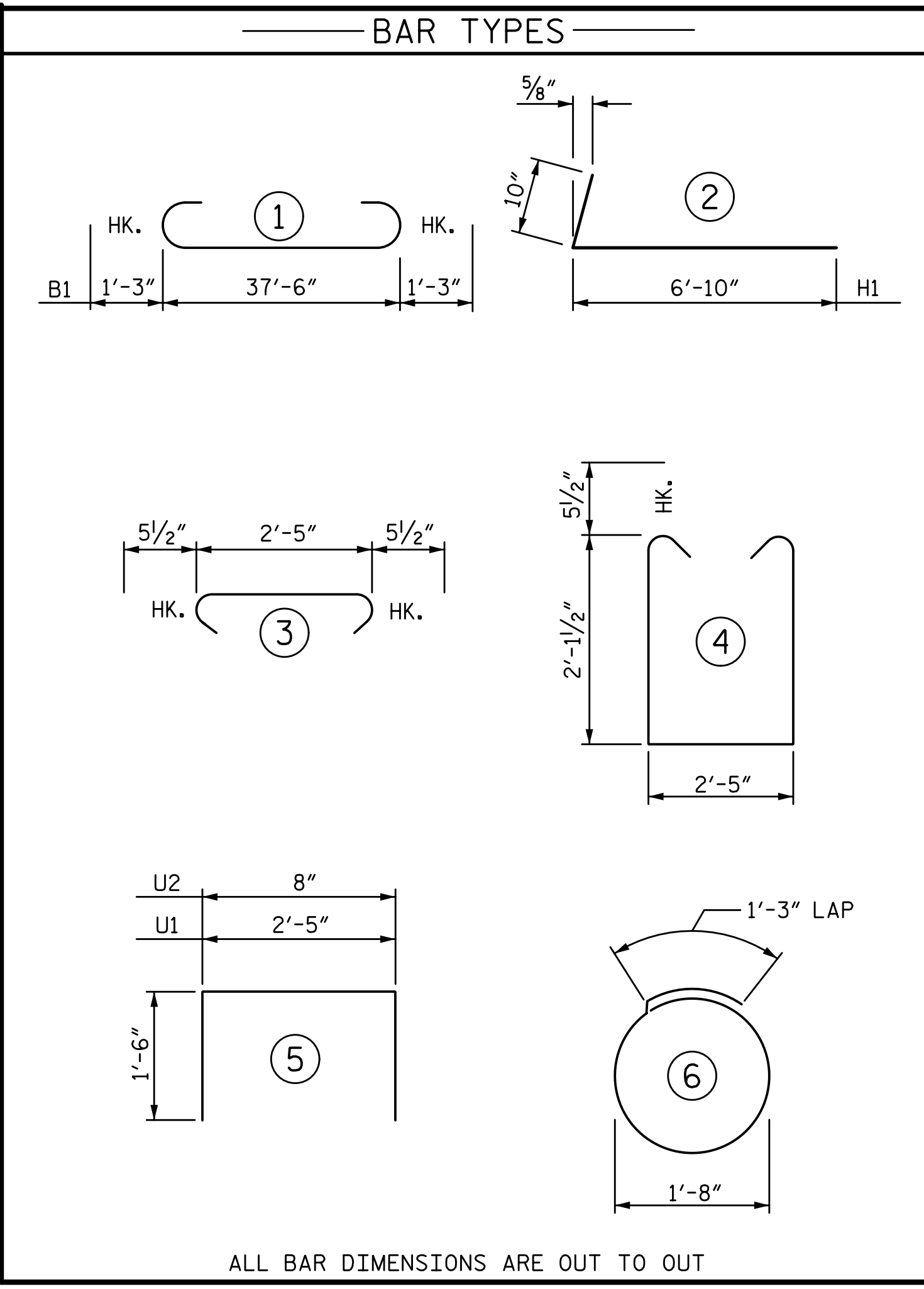
SECTION A-A



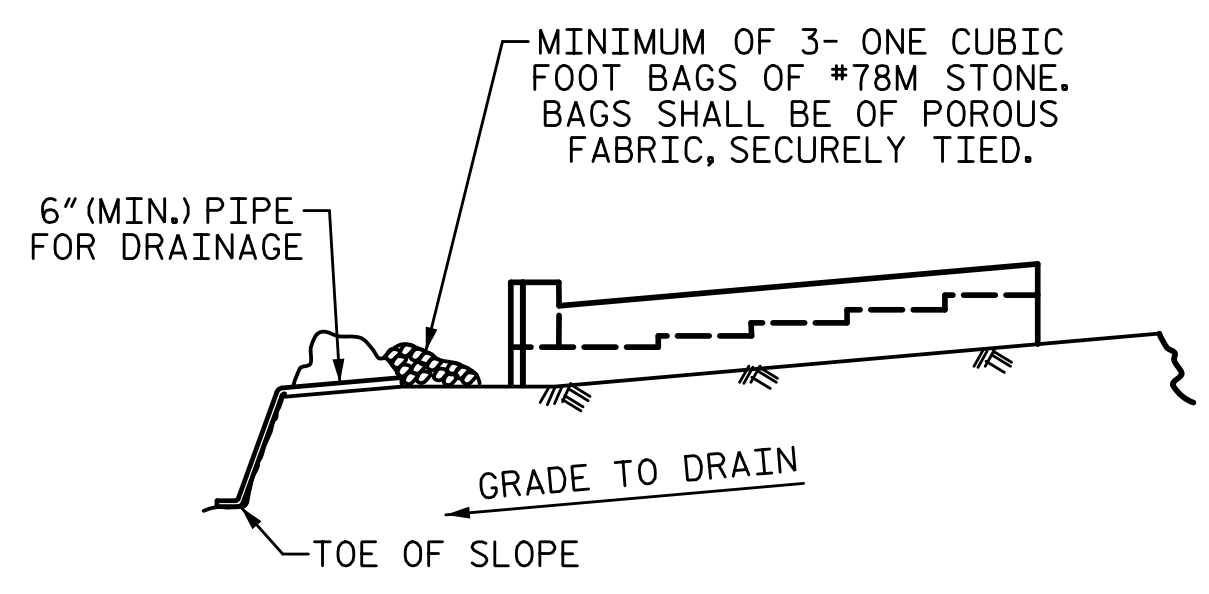
SECTION B-B



PILE SPLICE DETAILS



BILL OF MATERIAL					
END BENT 1 - LEFT					
BAR	NO.	SIZE	TYPE	LENGTH	WEIGHT
B1	8	#9	1	40'-0"	1088
B2	4	#5	STR	37'-7"	157
B3	8	#4	STR	20'-0"	107
B4	10	#4	STR	2'-5"	16
B5	8	#4	STR	2'-2"	12
B6	4	#4	STR	14'-6"	39
H1	18	#4	2	7'-8"	92
K1	12	#4	STR	20'-0"	160
K2	6	#4	STR	3'-10"	15
S1	40	#5	3	3'-4"	139
S2	40	#5	4	7'-7"	316
S3	10	#4	6	6'-6"	43
U1	16	#4	5	5'-5"	58
U2	34	#4	5	3'-8"	83
V1	68	#5	STR	4'-2"	296
V2	26	#4	STR	6'-1"	106
TOTAL REINFORCING STEEL				2727 LB	
CLASS A CONCRETE					
POUR 1 (CAP, COLLARS & LOWER WING)				12.2 CY	
POUR 2 (BACKWALL & UPPER WING)				4.1 CY	
TOTAL CLASS A CONCRETE				16.3 CY	
HP 12 X 53 STEEL PILES					
NO. 4				100 LF	
STEEL PILE POINTS				4 EA.	
PILE DRIVING EQUIPMENT					
SETUP FOR					
HP 12 X 53 STEEL PILES				NO. 4	



BAGGED STONE AND PIPE SHALL BE PLACED IMMEDIATELY AFTER COMPLETION OF END BENT EXCAVATION. PIPE MAY BE EITHER CONCRETE, CORRUGATED STEEL, CORRUGATED ALUMINUM ALLOY, OR CORRUGATED PLASTIC. PERFORATED PIPE WILL NOT BE ALLOWED.

BAGGED STONE SHALL REMAIN IN PLACE UNTIL THE ENGINEER DIRECTS THAT IT BE REMOVED. THE CONTRACTOR SHALL REMOVE AND DISPOSE OF SILT ACCUMULATIONS AT BAGGED STONE WHEN SO DIRECTED BY THE ENGINEER. BAGS SHALL BE REMOVED AND REPLACED WHENEVER THE ENGINEER DETERMINES THAT THEY HAVE DETERIORATED AND LOST THEIR EFFECTIVENESS.

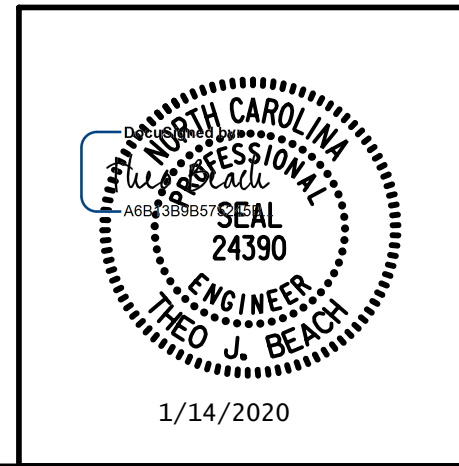
NO SEPARATE PAYMENT WILL BE MADE FOR THIS WORK AND THE ENTIRE COST OF THIS WORK SHALL BE INCLUDED IN THE UNIT CONTRACT PRICE BID FOR THE SEVERAL PAY ITEMS.

TEMPORARY DRAINAGE AT END BENT

PROJECT NO. I-5711
ALAMANCE COUNTY
 STATION: STA. 27+02.26 -L-

SHEET 3 OF 3

STATE OF NORTH CAROLINA
 DEPARTMENT OF TRANSPORTATION
 RALEIGH
 SUBSTRUCTURE
 END BENT 1
 LEFT WIDENING



PLANS PREPARED BY:
SE & A
 SIMPSON ENGINEERS ASSOCIATES
 5640 Dillard Drive
 Suite 200
 Cary, NC 27518
 (919) 852-0468
 (919) 852-0598 (Fax)
 www.simpsonengr.com
 LICENSURE NO. C-2521

REVISIONS					
NO.	BY:	DATE:	NO.	BY:	DATE:
1			3		
2			4		

SHEET NO.	S-44
TOTAL SHEETS	89

DRAWN BY:	S.D. COOPER	DATE:	1-20
CHECKED BY:	T. BEACH	DATE:	1-20
DESIGN ENGINEER OF RECORD:	T. BEACH	DATE:	1-20

DOCUMENT NOT CONSIDERED FINAL
 UNLESS ALL SIGNATURES COMPLETED