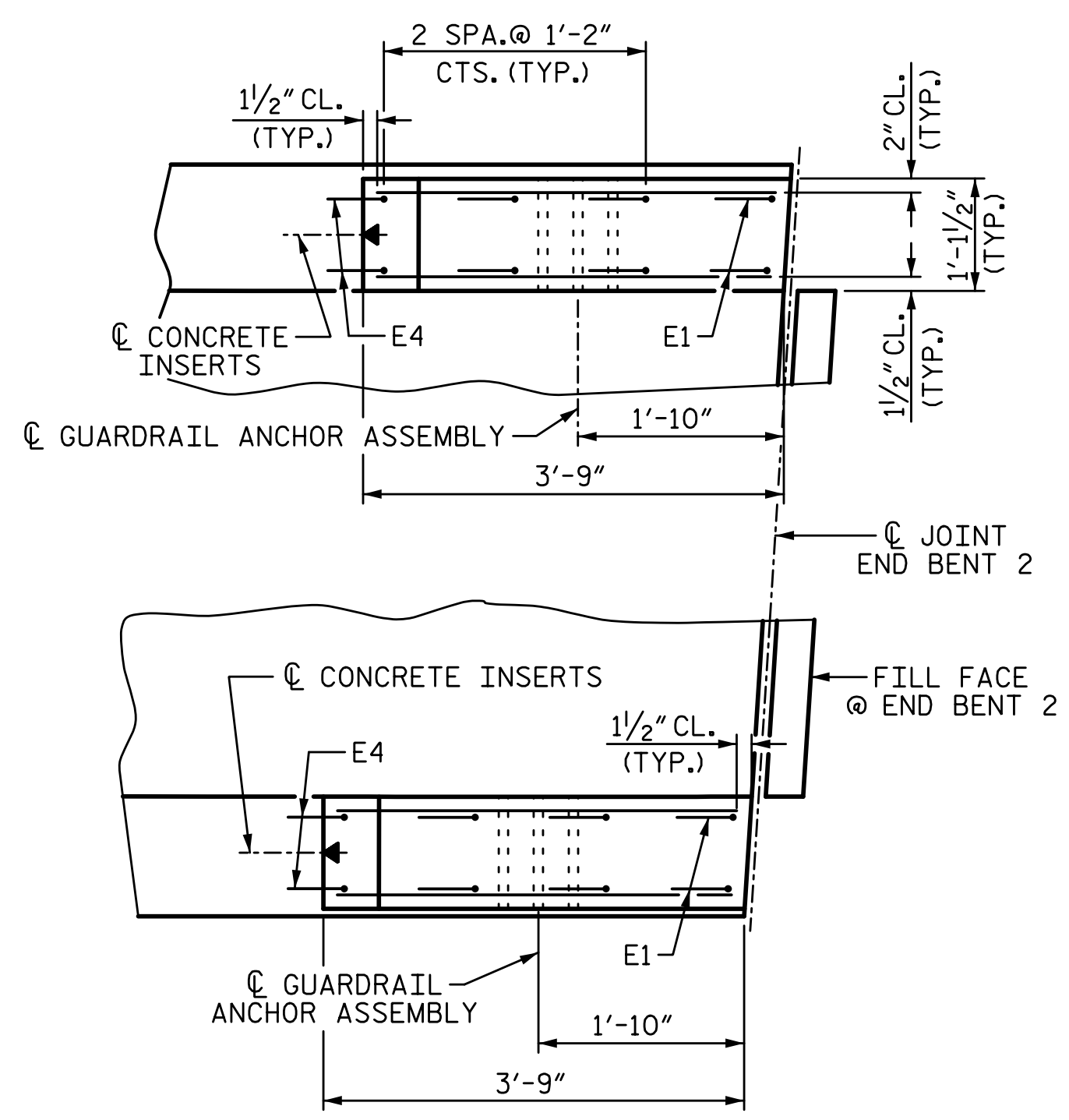
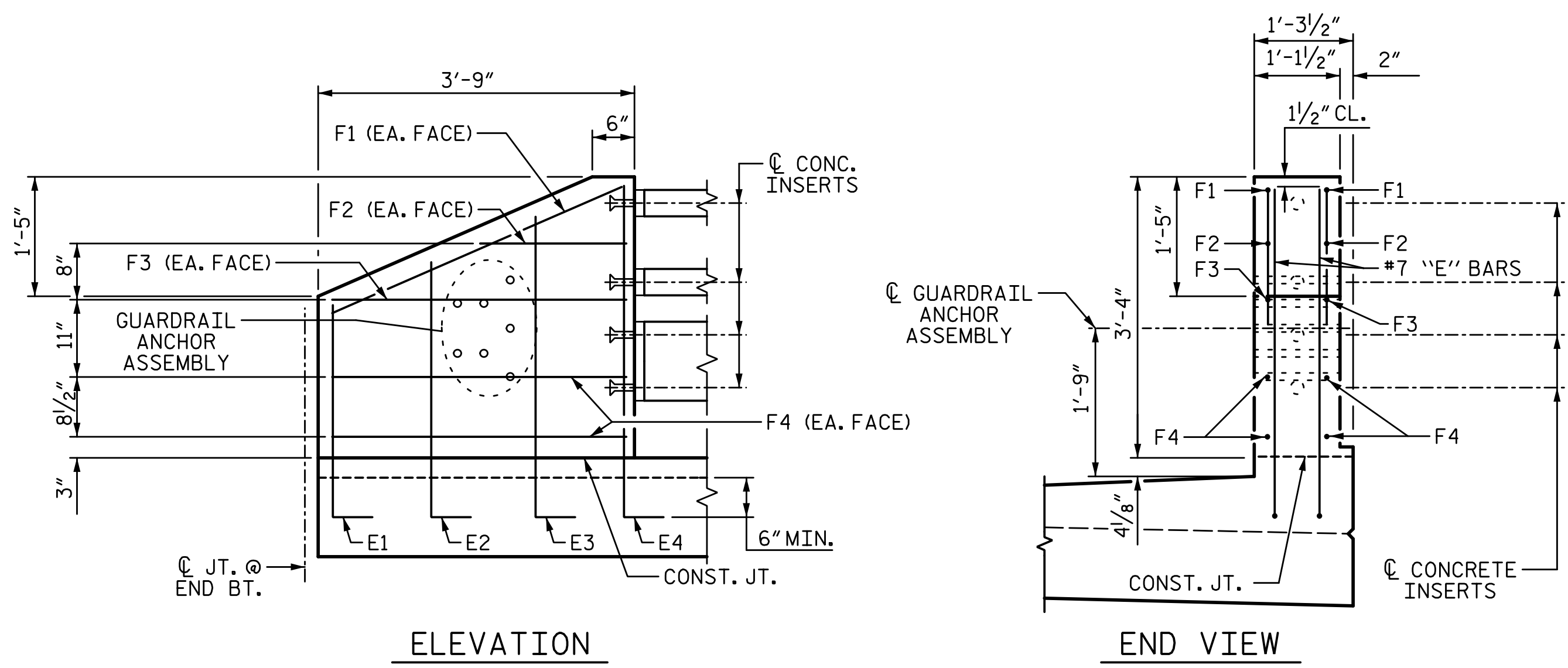


1/14/2020 10:06:22 AM G:\Projects\2017\I-5711\Structures\Drawings\Final\4015711_SMJ_BR_000177.dgn

NOTES:
 FOR END POSTS REINFORCING STEEL AND CONCRETE QUANTITIES, SEE "SUPERSTRUCTURE BILL OF MATERIAL" SHEET.
 FOR DETAILS OF GUARDRAIL ASSEMBLES, SEE "GUARDRAIL ANCHORAGE DETAILS" SHEET.



PLAN
 END BENT 2 SHOWN
 (END BENT 1 SIMILAR EXCEPT NO GUARDRAIL ATTACHMENT @ END BENT 1 LEFT)



ELEVATION **END VIEW**

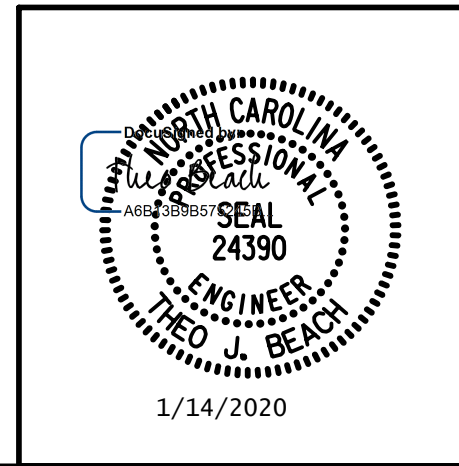
END POST DETAILS

PROJECT NO. I-5711
ALAMANCE COUNTY
 STATION: STA. 27+02.26 -L-

SHEET 3 OF 3

STATE OF NORTH CAROLINA
 DEPARTMENT OF TRANSPORTATION
 RALEIGH
 SUPERSTRUCTURE
END POST DETAILS
 LEFT & RIGHT WIDENING

PLANS PREPARED BY:
SE & A
 SIMPSON ENGINEERS & ASSOCIATES
 5640 Dillard Drive
 Suite 200
 Cary, NC 27518
 (919) 852-0468
 (919) 852-0598 (Fax)
 www.simpsonengr.com
 LICENSURE NO. C-2521



DRAWN BY: <u>S.D. COOPER</u>	DATE: <u>1-20</u>
CHECKED BY: <u>T. BEACH</u>	DATE: <u>1-20</u>
DESIGN ENGINEER OF RECORD: <u>T. BEACH</u>	DATE: <u>1-20</u>

REVISIONS						SHEET NO.
NO.	BY:	DATE:	NO.	BY:	DATE:	S-36
1			3			TOTAL SHEETS
2			4			89

DOCUMENT NOT CONSIDERED FINAL UNLESS ALL SIGNATURES COMPLETED