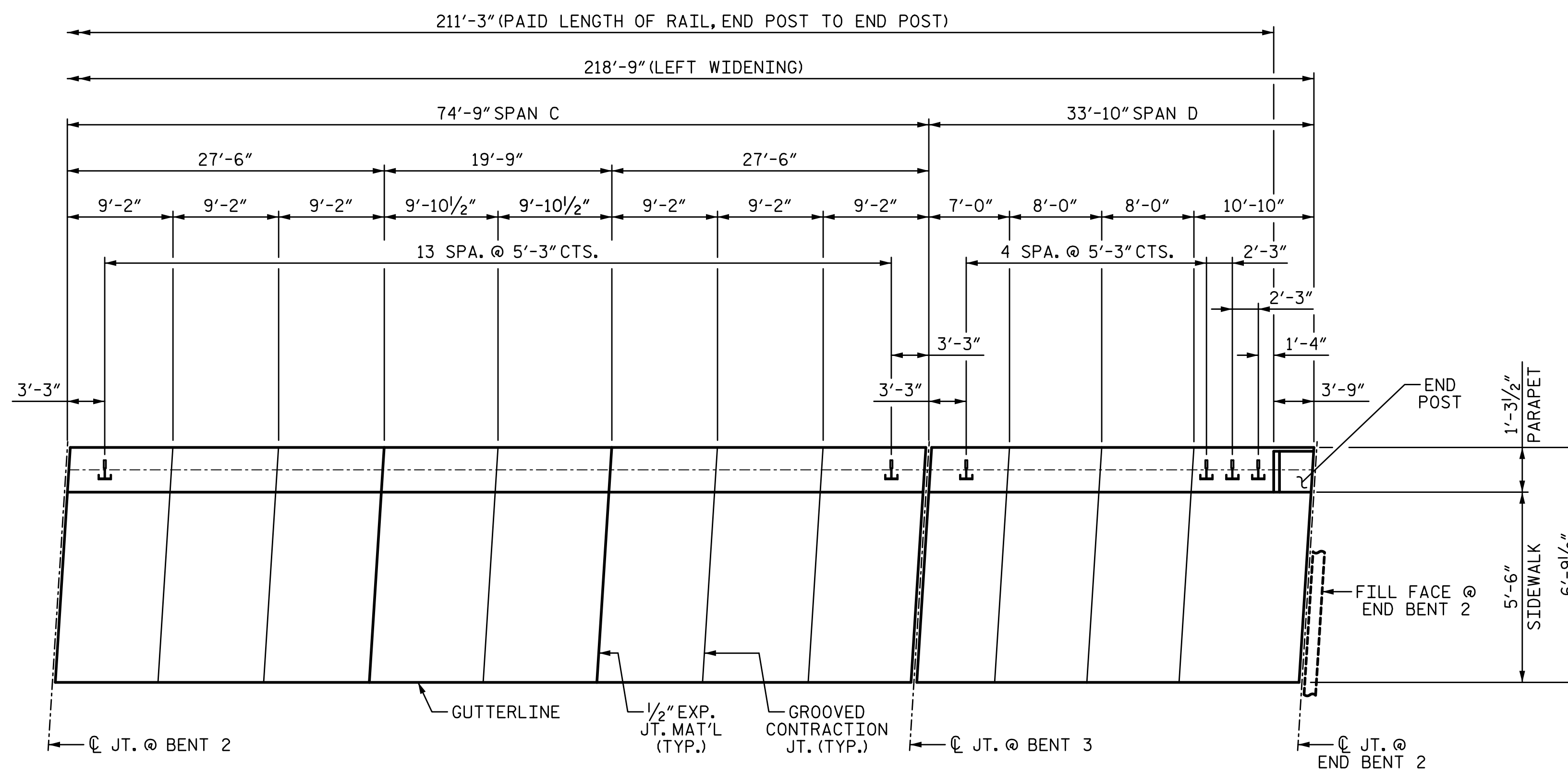


PLAN OF RAIL POST SPACINGS
SPANS A & B

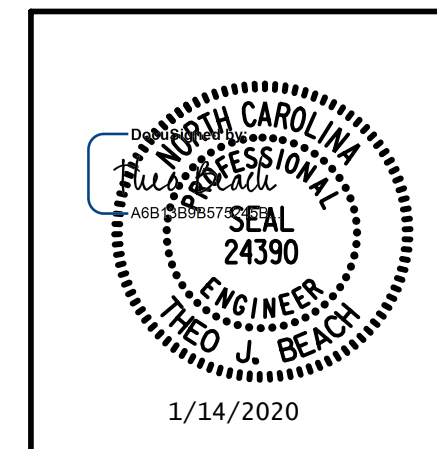


PLAN OF RAIL POST SPACINGS
SPANS C & D

1/14/2020 10:06:22 AM G:\Projects\2017\I-5711\Structures\Drawings\Final\4015711_SMJ_BR_000177.dgn

DRAWN BY: S.D. COOPER DATE: 1-20
 CHECKED BY: T. BEACH DATE: 1-20
 DESIGN ENGINEER OF RECORD: T. BEACH DATE: 1-20

PLANS PREPARED BY:
SE & A
 SIMPSON ENGINEERS & ASSOCIATES
 5640 Dillard Drive
 Suite 200
 Cary, NC 27518
 (919) 852-0468
 (919) 852-0598 (Fax)
 www.simpsonengr.com
 LICENSURE NO. C-2521



PROJECT NO. I-5711
 ALAMANCE COUNTY
 STATION: STA. 27+02.26 -L-

SHEET 1 OF 3

STATE OF NORTH CAROLINA
 DEPARTMENT OF TRANSPORTATION
 RALEIGH
 SUPERSTRUCTURE

RAIL POST SPACING
 LEFT WIDENING

REVISIONS

NO.	BY:	DATE:	NO.	BY:	DATE:	SHEET NO.
1			3			S-34
2			4			TOTAL SHEETS 89

**DOCUMENT NOT CONSIDERED FINAL
 UNLESS ALL SIGNATURES COMPLETED**