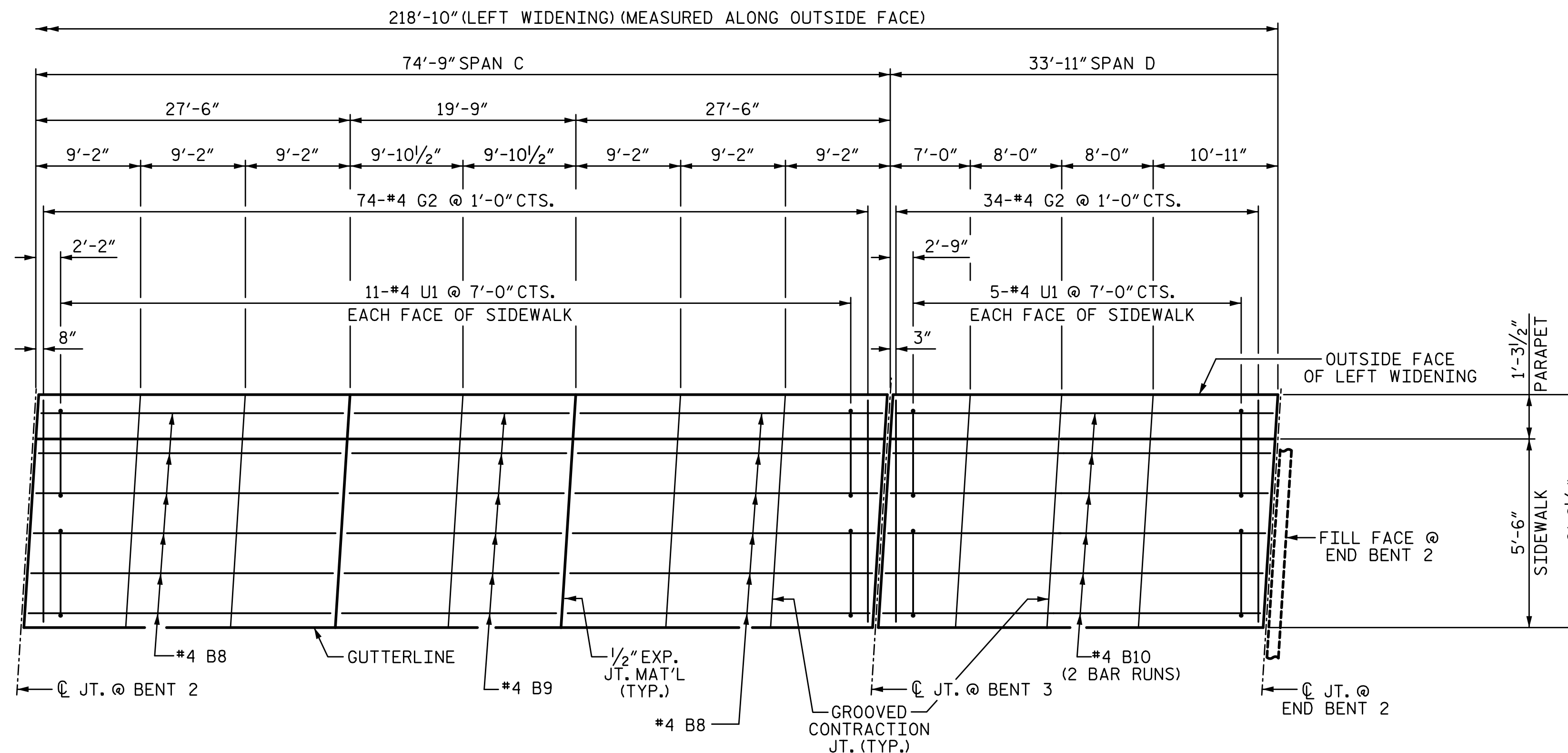


PLAN OF SIDEWALK

SPAN A & B
(END POSTS NOT SHOWN FOR CLARITY)



PLAN OF SIDEWALK

SPAN C & D
(END POSTS NOT SHOWN FOR CLARITY)

NOTES:

SIDEWALK IN EACH SPAN SHALL NOT BE CAST UNTIL ALL SLAB CONCRETE IN THE SPAN HAS BEEN CAST AND HAS REACHED A MINIMUM COMPRESSIVE STRENGTH OF 3000 PSI.

ALL REINFORCING STEEL IN SIDEWALK SHALL BE EPOXY COATED.

GROOVED CONTRACTION JOINTS, 1/2" IN DEPTH, SHALL BE TOOLED IN ALL EXPOSED FACES OF THE SIDEWALK IN ACCORDANCE WITH ARTICLE 825-10(B) OF THE STANDARD SPECIFICATIONS.

FOR SIDEWALK REINFORCING STEEL AND CONCRETE QUANTITIES SEE SUPERSTRUCTURE "BILL OF MATERIAL" SHEET.

SEE APPROACH SLAB SHEETS FOR SIDEWALK ON APPROACH SLABS.

THE #4U1 BARS MAY BE PUSHED INTO GREEN CONCRETE AFTER SPAN HAS BEEN SCREEDED OFF.

1/14/2020 10:06:20 AMG:\Projects\2017\I-5711\Structures\Drawings\Final\401-I5711-SMJ_SW_000177.dgn

PROJECT NO. I-5711
ALAMANCE COUNTY
 STATION: STA. 27+02.26 -L-

SHEET 1 OF 3

STATE OF NORTH CAROLINA
 DEPARTMENT OF TRANSPORTATION
 RALEIGH
 SUPERSTRUCTURE

SIDEWALK DETAILS

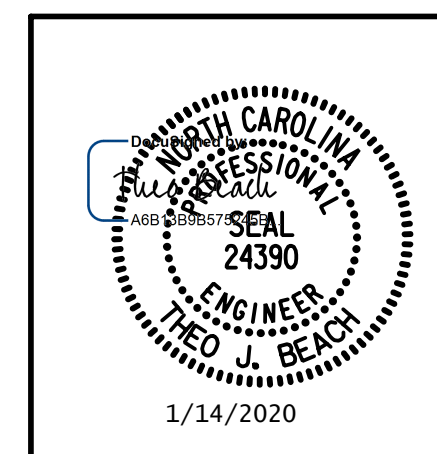
LEFT WIDENING

REVISIONS

NO.	BY:	DATE:	NO.	BY:	DATE:	SHEET NO.
1			3			S-28
2			4			TOTAL SHEETS 89

PLANS PREPARED BY:

S&A
 SIMPSON ENGINEERS & ASSOCIATES
 5640 Dillard Drive
 Suite 200
 Cary, NC 27518
 (919) 852-0468
 (919) 852-0598 (Fax)
 www.simpsonengr.com
 LICENSURE NO. C-2521



DOCUMENT NOT CONSIDERED FINAL UNLESS ALL SIGNATURES COMPLETED