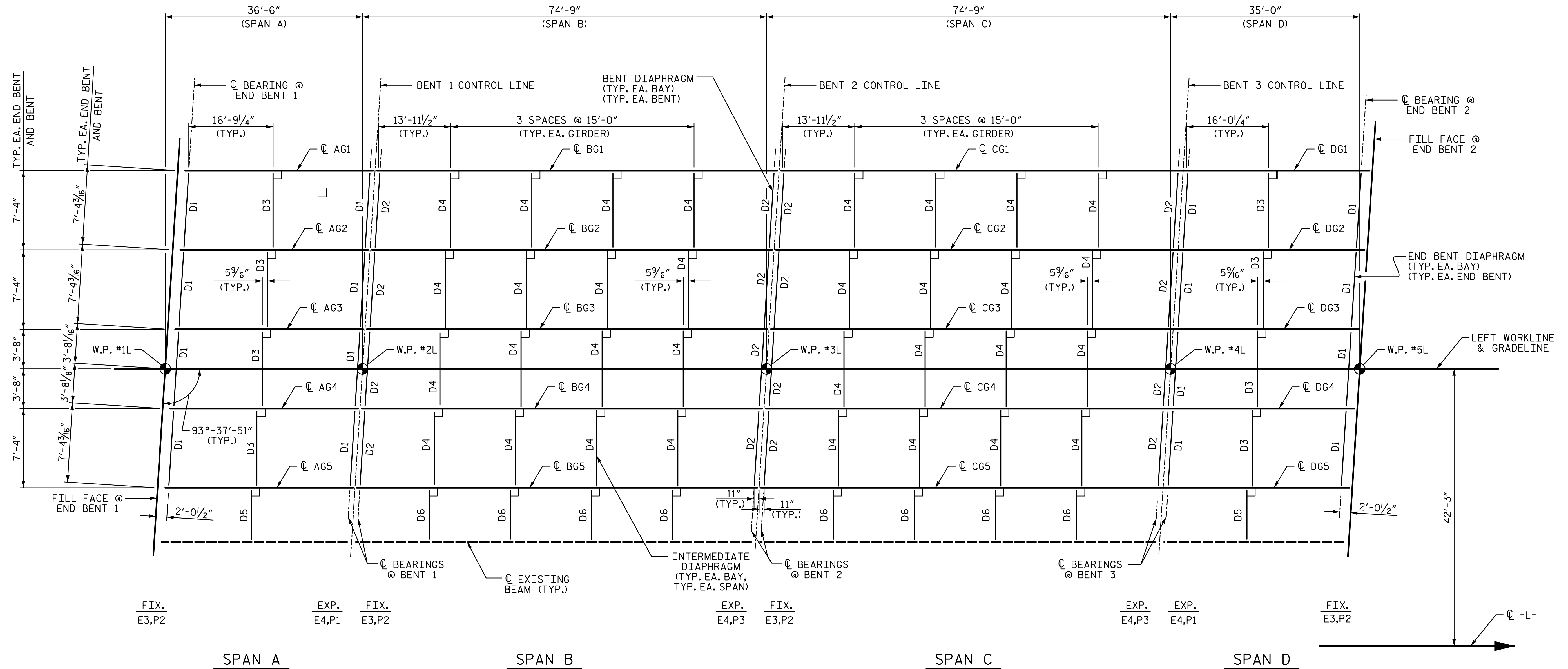


NOTES:

FOR DIAPHRAGM DETAILS, SEE "STRUCTURAL STEEL DETAILS" SHEETS.

FOR ELASTOMERIC BEARINGS AND STEEL SOLE PLATE DETAILS, SEE "ELASTOMERIC BEARING DETAILS" SHEET.



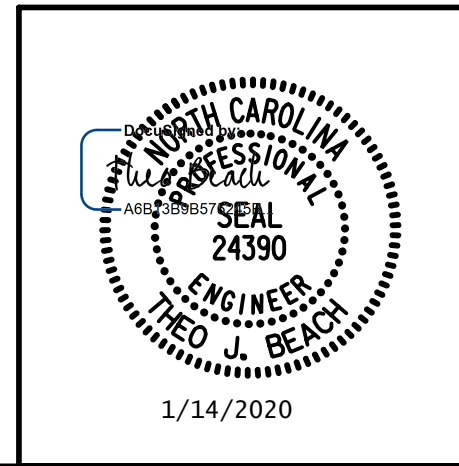
PLAN

PROJECT NO. I-5711
ALAMANCE COUNTY
 STATION: STA. 27+02.26 -L-

1/14/2020 10:06:17 AM G:\Projects\2017\I-5711\Structures\Drawings\Final\4015711_SMJ_FP_000177.dgn

DRAWN BY: R. SEALEY DATE: 1-20
 CHECKED BY: T. BEACH DATE: 1-20
 DESIGN ENGINEER OF RECORD: T. BEACH DATE: 1-20

PLANS PREPARED BY:
SEALEY & ASSOCIATES
 IMPSON ENGINEERS & ASSOCIATES
 5640 Dillard Drive
 Suite 200
 Cary, NC 27518
 (919) 852-0468
 (919) 852-0598 (Fax)
 www.simpsonengr.com
 LICENSURE NO. C-2521



STATE OF NORTH CAROLINA
 DEPARTMENT OF TRANSPORTATION
 RALEIGH
 SUPERSTRUCTURE
FRAMING PLAN
 LEFT WIDENING

REVISIONS						SHEET NO.
NO.	BY:	DATE:	NO.	BY:	DATE:	S-17
1			3			TOTAL SHEETS
2			4			89

**DOCUMENT NOT CONSIDERED FINAL
 UNLESS ALL SIGNATURES COMPLETED**