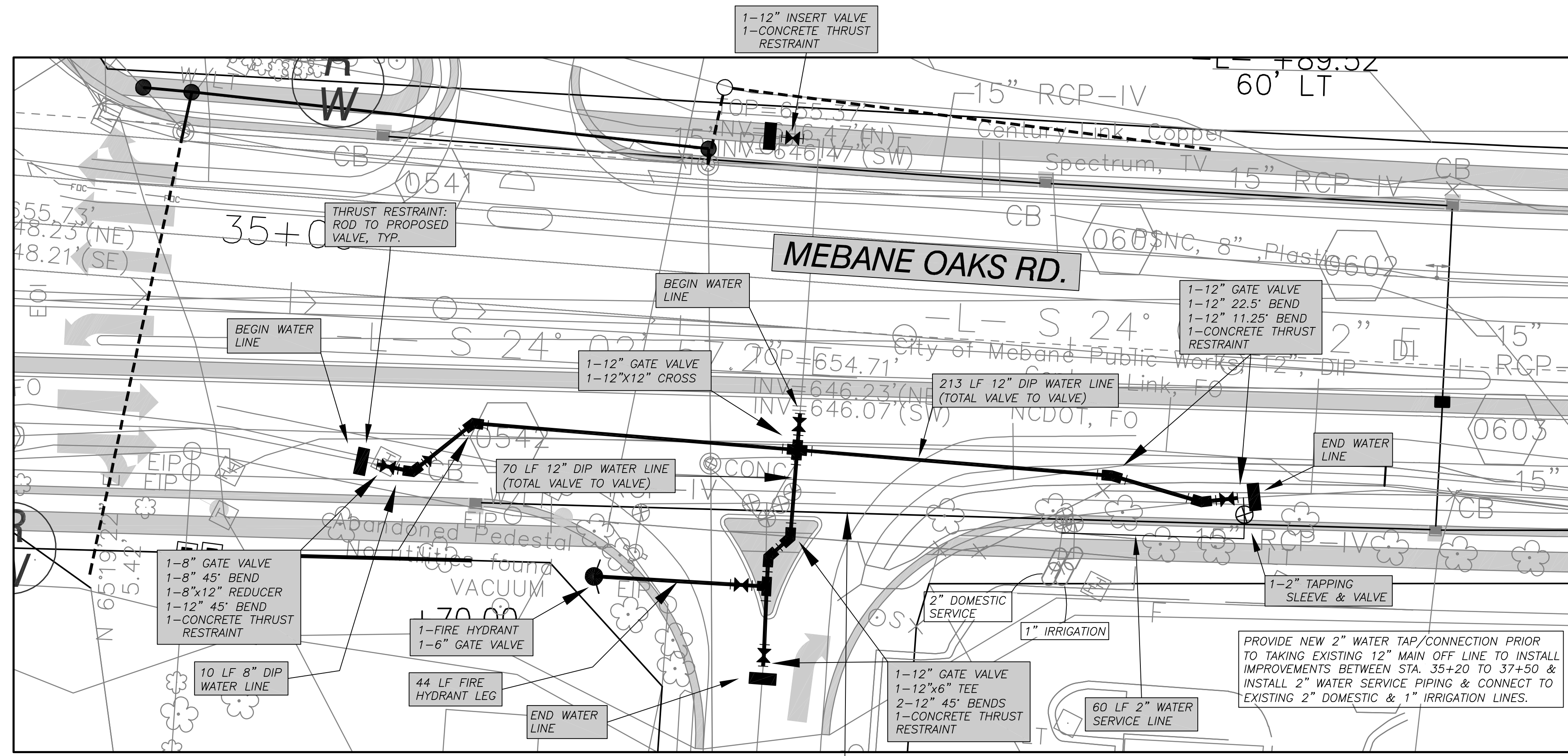
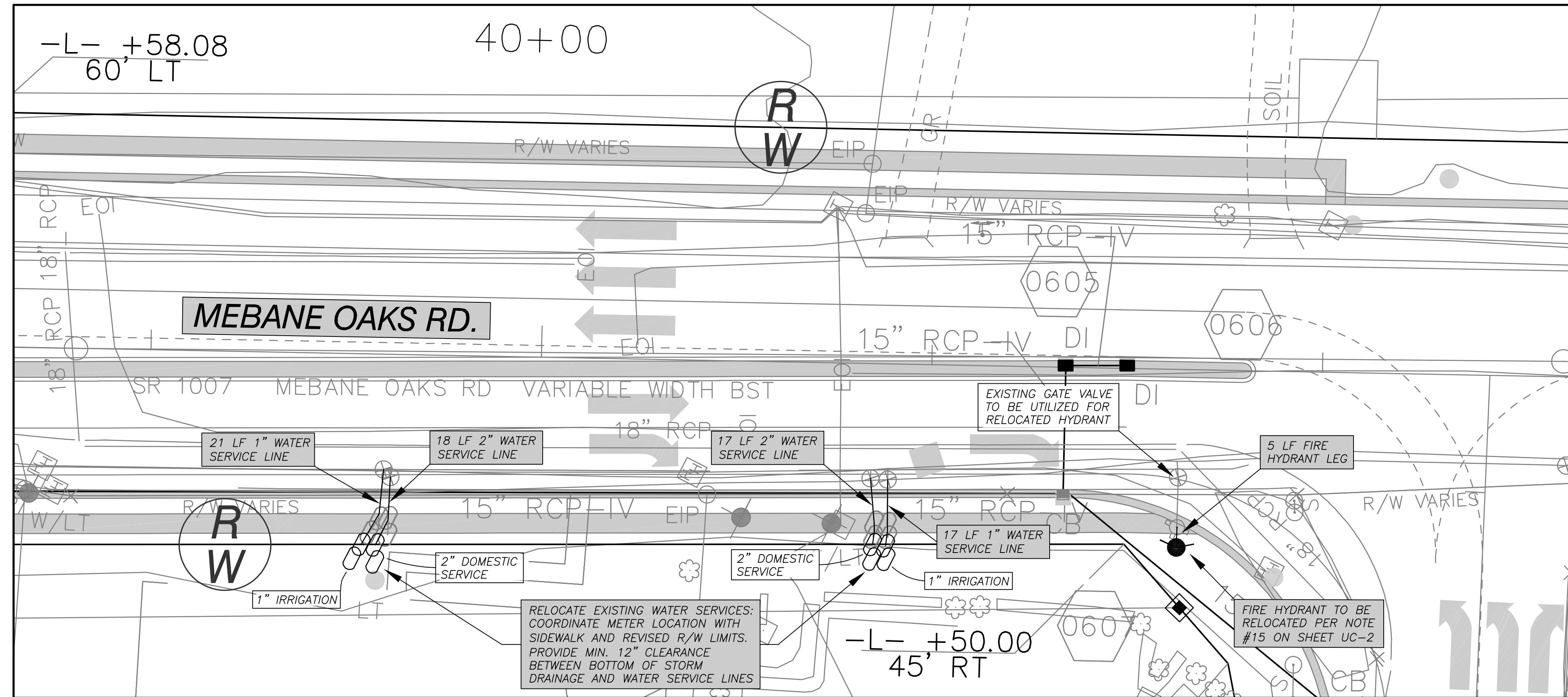


PROJECT REFERENCE NO.	SHEET NO.
I-5711	UC-9
DESIGNED BY: T. KING	
DRAWN BY: W. FOX	
CHECKED BY: T. KING	
APPROVED BY: T. KING	
REVISED:	

aw
ck

alley, williams, carmen & king, inc.
ENGINEERS, ARCHITECTS & SURVEYORS
740 chapel hill road
burlington, n.c. 27215
p.o. box 1179
336/226-5534
Firm's Engineering License No. F-0203

ROADWAY DESIGN DATA AND DRAWINGS PROVIDED BY NCDOT



- WATERLINE CONSTRUCTION NOTES:**
1. CONTRACTOR TO INSTALL CONCRETE THRUST RESTRAINT AND ALLOW CURING PRIOR TO INSTALLATION OF VALVES (3 LOCATIONS).
 2. INSTALL HOT TAP VALVE.
 3. INSTALL TEMPORARY SERVICE TO TACO BELL. CONTRACTOR TO COORDINATE CUT-IN VALVE INSTALLATION WITH CITY OF MEBANE PUBLIC WORKS DEPARTMENT. VALVE INSTALLATION WILL REQUIRE TEMPORARY DISRUPTION OF WATER SERVICE AND/OR NIGHT WORK. CONTRACTOR SHALL PROVIDE CITY OF MEBANE WITH ONE WEEKS NOTICE PRIOR TO INSTALLATION IN ORDER TO COORDINATE SERVICE DISRUPTION WITH WATER CUSTOMERS.
 4. DEMO OR ABANDON (?? WATER LINE TAKEN OUT OF SERVICE).
 5. INSTALL NEW WATER MAIN AND TIE INTO VALVES INSTALLED IN STEPS #2 & #3. PRESSURE TEST NEW WATER MAIN, CHLORINATE AND PULL SAMPLE.
 6. ONCE CERTIFICATION HAS BEEN COMPLETED, PLACE LINE IN SERVICE.

SHADED BOXES INDICATE PAY ITEMS IN BID FORM

UNSHADED BOXES ARE ITEMS TO IDENTIFY WORK/INSTRUCTIONS RELATED TO THE WORK AND COST CONSIDERED INCIDENTAL TO THE WORK.

PLAN
SCALE: 1" = 20'

I:\2019\18040 City of Mebane - I-5711 Meb. Ohio Utility Relocations.dwg, 1/15/2020 8:51:27 AM, Adobe PDF (Temporary).pct, 1:1, TSK