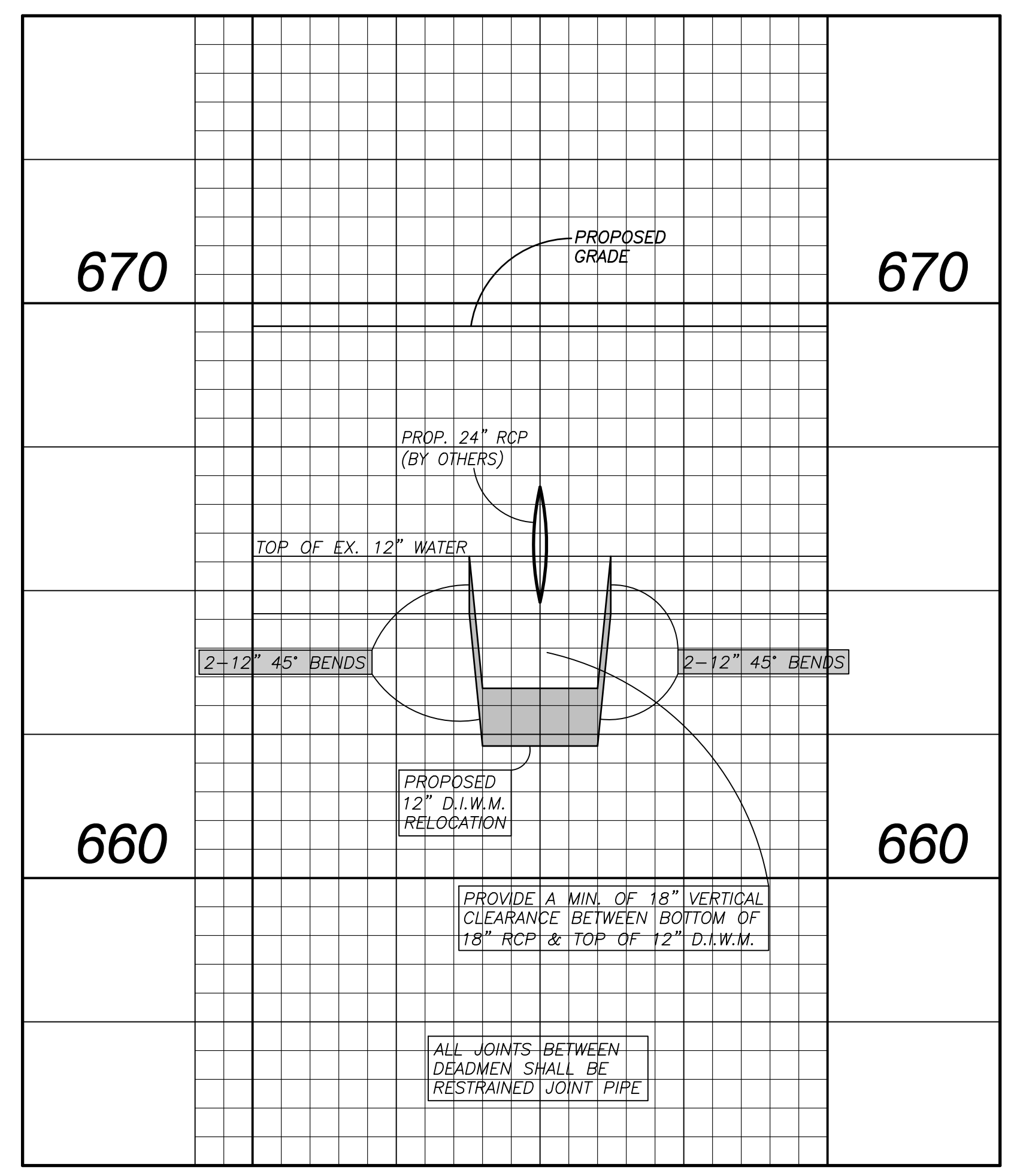


NAD 83/2011



- WATERLINE CONSTRUCTION NOTES:**
- CONTRACTOR TO INSTALL CONCRETE THRUST RESTRAINT AND ALLOW CURING PRIOR TO INSTALLATION OF VALVES.
 - CONTRACTOR TO COORDINATE VALVE INSTALLATION WITH CITY OF MEBANE PUBLIC WORKS DEPARTMENT. VALVE INSTALLATION WILL REQUIRE TEMPORARY DISRUPTION OF WATER SERVICE AND/OR NIGHT WORK. CONTRACTOR SHALL PROVIDE CITY OF MEBANE WITH ONE WEEKS NOTICE PRIOR TO INSTALLATION IN ORDER TO COORDINATE SERVICE DISRUPTION WITH WATER CUSTOMERS.
 - DEMO OR ABANDON (?? WATER LINE TAKEN OUT OF SERVICE).
 - INSTALL NEW WATER MAIN AND TIE INTO VALVES INSTALLED IN STEP #2. PRESSURE TEST NEW WATER MAIN, CHLORINATE AND PULL SAMPLE.
 - ONCE CERTIFICATION HAS BEEN COMPLETED, PLACE LINE IN SERVICE.

PROJECT WATER FITTINGS CHART:

DESCRIPTION	NO.	WEIGHT (EA.)	WEIGHT (TOTAL)
12" 45° BEND	7	215	1505
8" 45° BEND	1	110	110
6" 45° BEND	1	75	75
12" 22.5° BEND	1	220	220
12" 11.25° BEND	1	220	220
12" X 6" TEE	1	325	325
12" X 8" REDUCER	1	165	165
12" X 12" CROSS	1	495	495
TOTAL			3175 LBS.

SHADED BOXES INDICATE PAY ITEMS IN BID FORM

UNSHADED BOXES ARE ITEMS TO IDENTIFY WORK INSTRUCTIONS RELATED TO THE WORK AND COST CONSIDERED INCIDENTAL TO THE WORK.

COST OF MEGALUGS ARE CONSIDERED INCIDENTAL TO THE WORK BEING PAID FOR AT THE CONTRACT UNIT PRICE FOR FITTINGS AND/OR WATER LINE PIPE.