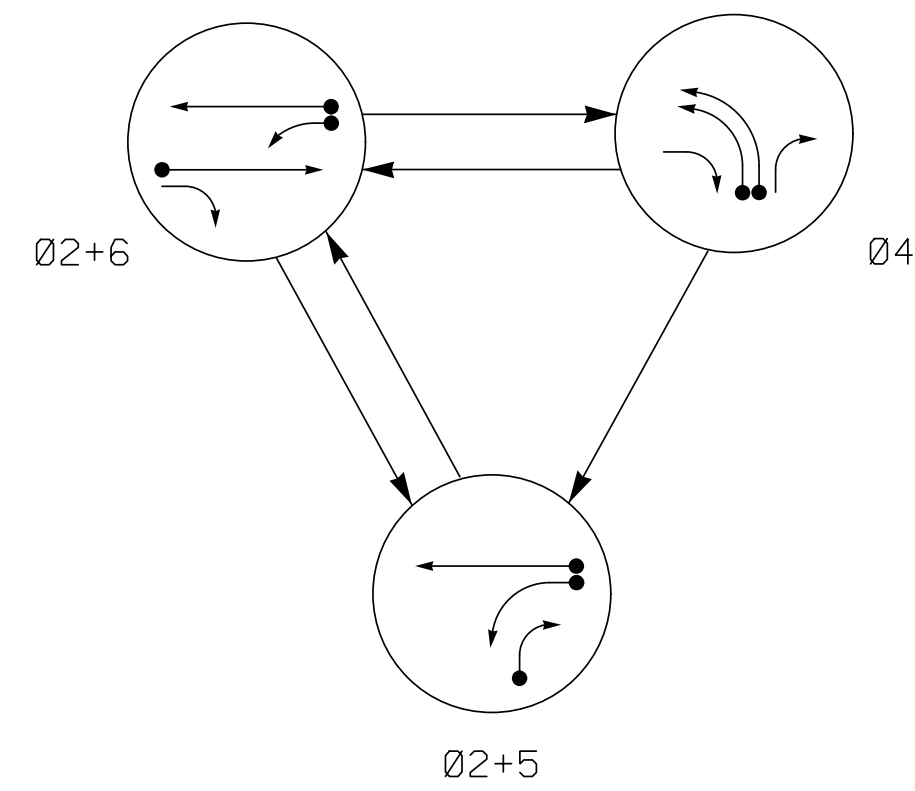
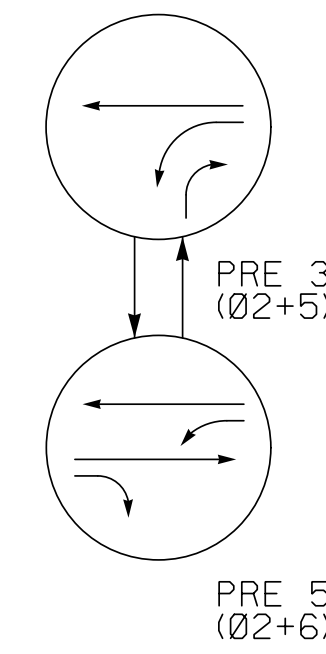


### PHASING DIAGRAM



### EV PREEMPT PHASES (Medium Priority)

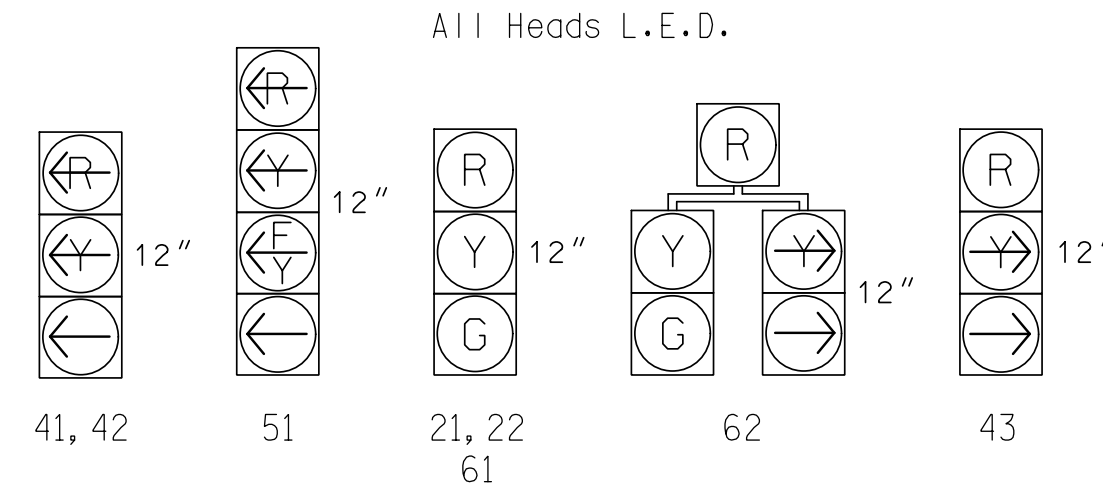


SIGNAL FACE	PHASE						
	Ø 2+5	Ø 2+6	Ø 4	PRE 3	PRE 5	PRE 6	PRE 7
21, 22	G	G	R	G	G	Y	
41, 42	R	R	L	R	R	R	
43		R			R	R	
51		L	R		L	Y	
61	R	G	R	R	G	Y	
62	R	G	R	R	G	Y	

ZONE	SIZE (FT)	DISTANCE FROM STOPBAR (FT)	TURNS	NEW LOOP	PROGRAMMING							
					PHASE	CALLING	EXTEND TIME	DELAY TIME	USE ADDED INITIAL	TYPE	SYSTEM LOOP	NEW CARD
2A/S13	6X6	300	*	*	2	Yes	-	-	X	N	X	*
4A	6X40	0	*	*	4	Yes	-	3	-	S	-	*
4B	6X40	0	*	*	4	Yes	-	-	-	S	-	*
5A	6X40	0	*	*	5	Yes	-	15	-	S	-	*
					2	Yes	-	3	-	G	-	*
5B	6X40	0	*	*	5	Yes	-	15	-	S	-	*
6A/S11	6X6	300	*	*	6	Yes	-	-	X	N	X	*
S12	6x6	300	*	*	-	No	-	-	-	N	X	*
S15	6x6	+145	*	*	-	No	-	-	-	N	X	*
S16	6x6	+145	*	*	-	No	-	-	-	N	X	*

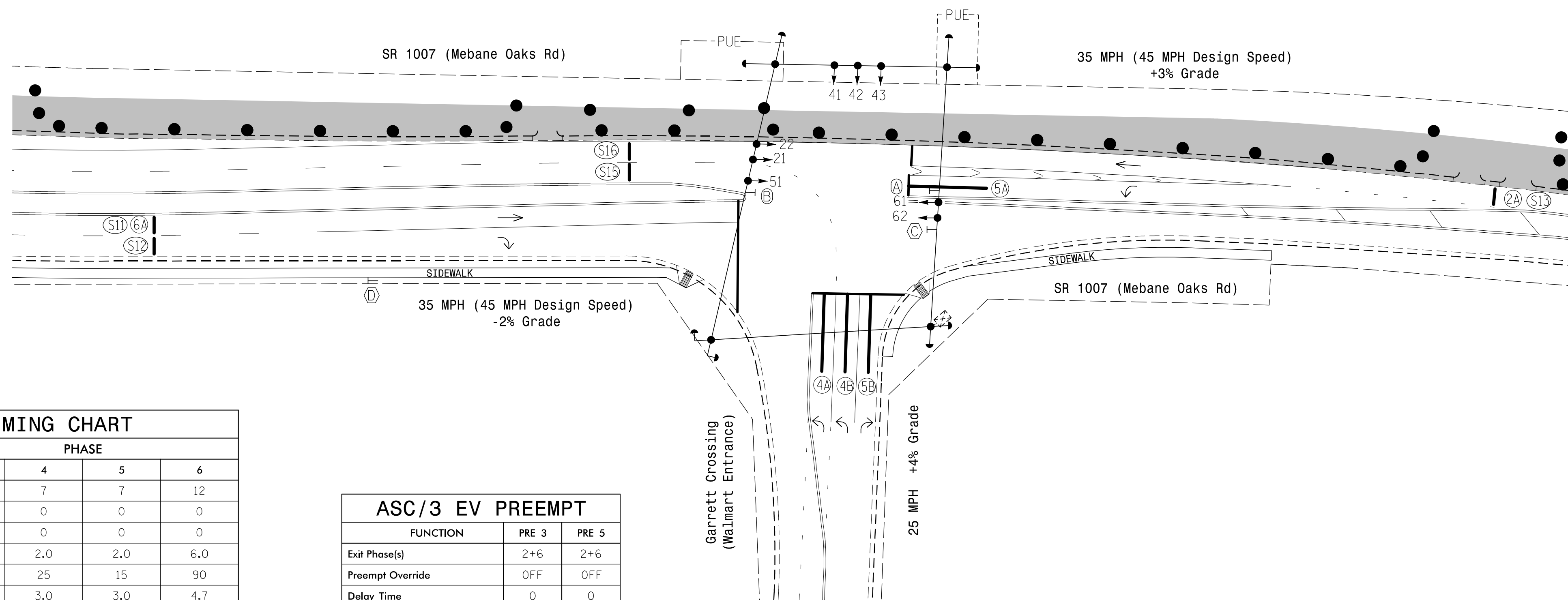
\* Video Detection Zone

### SIGNAL FACE I.D.



### PHASING DIAGRAM DETECTION LEGEND

- ➡ ● DETECTED MOVEMENT
- ➡ UNDETECTED MOVEMENT (OVERLAP)
- ➡ - - - UNSIGNALED MOVEMENT



FEATURE	PHASE			
	2	4	5	6
Min Green *	12	7	7	12
Walk *	0	0	0	0
Ped Clear	0	0	0	0
Veh. Extension *	6.0	2.0	2.0	6.0
Max I *	90	25	15	90
Yellow	4.7	3.0	3.0	4.7
Red Clear	1.3	2.9	2.3	1.3
Red Revert	2.0	2.0	2.0	2.0
Actuations B4 Add *	0	-	-	0
Seconds /Actuation *	2.5	-	-	2.5
Max Initial *	34	-	-	34
Time Before Reduction *	15	-	-	15
Time To Reduce *	30	-	-	30
Minimum Gap	3.0	-	-	3.0
Locking Detector	X	-	-	X
Recall Position	VEH. RECALL	-	-	VEH. RECALL
Dual Entry	-	-	-	-
Simultaneous Gap	X	X	X	X

\* These values may be field adjusted. Do not adjust Min Green and Extension times for phases 2 and 6 lower than what is shown. Min Green for all other phases should not be lower than 4 seconds.

FUNCTION	PRE 3	PRE 5
Exit Phase(s)	2+6	2+6
Preempt Override	OFF	OFF
Delay Time	0	0
Ped Clear Through Yellow	N	N
Terminate Phases	N	N
Entrance Walk	255*	255*
Entrance Ped Clear	255*	255*
Entrance Min Green	1	1
Entrance Yellow Clear	25.5*	25.5*
Entrance Red Clear	25.5*	25.5*
Min Dwell Time	7	7
Preempt Input Extension Time	2	2
Preempt Max Time	120	120
Exit Yellow Clear	25.5*	25.5*
Exit Red Clear	25.5*	25.5*

\* Time defaults to time used for phase during normal operation

### 3 Phase Fully Actuated w/ Emergency Vehicle Preemption SR 1007 (Mebane Oaks Rd) CLS Signal System: 10705

### NOTES

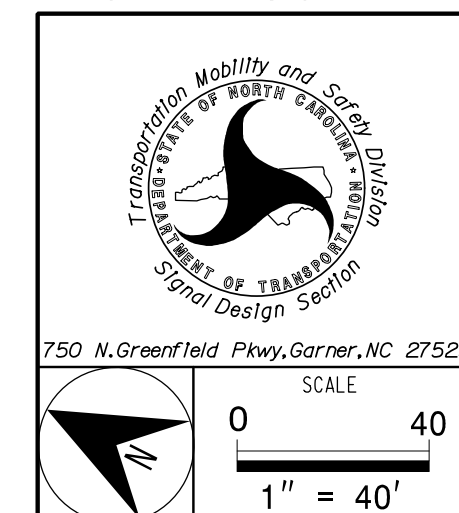
- Refer to "Roadway Standard Drawings NCDOT" dated January 2018 and "Standard Specifications for Roads and Structures" dated January 2018.
- Do not program signal for late night flashing operation unless otherwise directed by the Engineer.
- Phase 5 may be lagged.
- Set all detector units to presence mode.
- This intersection features a GPS Emergency Vehicle Preemption system.
- Maximum times shown in timing chart are for free-run operation only. Coordinated signal system timing values supersede these values.
- Closed loop system data:  
Controller Asset #: 2060.

### LEGEND

- | PROPOSED | EXISTING |
|----------|----------|
| ○ →      | ● →      |
| ○ →      | ● →      |
| ○ →      | ● →      |
| ⊠        | ⊠        |
| □        | ■        |
| - - -    | - - -    |
| →        | →        |
| • • •    | • • •    |
| ■        | ■        |
| N/A      | ▲        |
| (A)      | (A)      |
| (B)      | (B)      |
| (C)      | (C)      |
| (D)      | (D)      |

### (TMP Phase II) Signal Upgrade - Temporary Design 2

PREPARED IN THE OFFICE OF:  
**Accelerate Engineering, PLLC**  
875 Walnut Street, Suite 316  
Cary, NC 27511  
Tel: 919.263.5678 Fax: 919.263.5687  
NC License No. P-1442



SR 1007 (Mebane Oaks Rd)  
at  
Garrett Crossing  
(Walmart Entrance)

Division 7 Alamance County Mebane

PLAN DATE: November 2019 REVIEWED BY: Z. "Gavin" Teng

PREPARED BY: Z. "Gavin" Teng REVIEWED BY:

REVISIONS	INIT.	DATE

DOCUMENT NOT CONSIDERED FINAL UNLESS ALL SIGNATURES COMPLETED

SEAL

PROFESSIONAL ENGINEER  
ZHAOLONG TENG  
032179

12/17/2019

SIG. INVENTORY NO. 07-2060T2