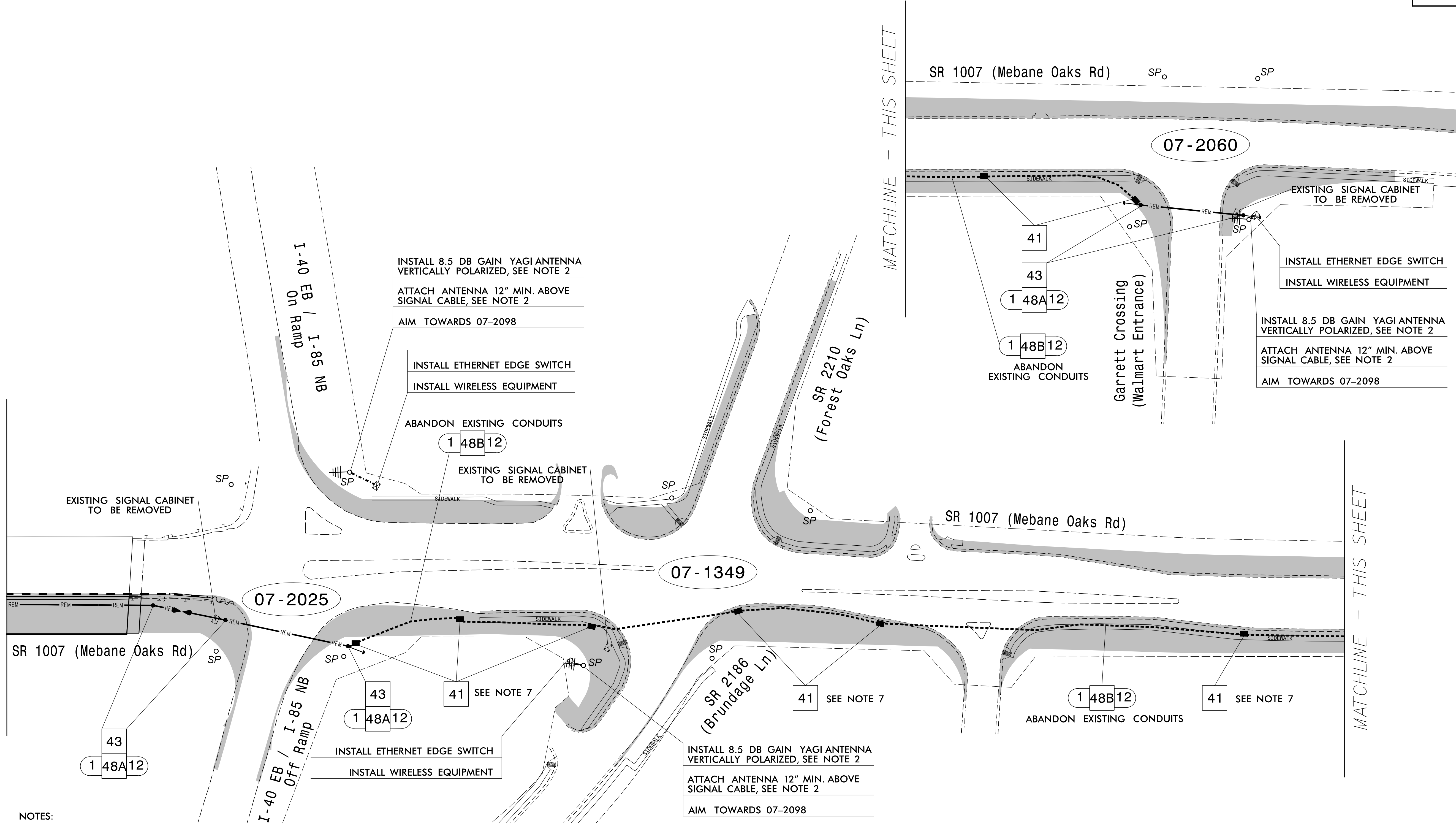


MATCHLINE - SHEET SCP 3

MATCHLINE - THIS SHEET



NOTES:

- 1. AFTER WIRELESS SIGNAL COMMUNICATION IS INSTALLED, REMOVE EXISTING 12-FIBER COMMUNICATIONS CABLES AS SHOWN AND ABANDON EXISTING CONDUITS.
2. FOR RADIO ANTENNA INSTALLATION ON A NEW WOOD SIGNAL POLE, INSTALL A NEW 2" RIGID GALVANIZED STEEL RISER WITH WEATHERHEAD AND A 2" POLYETHYLENE CONDUIT TO ROUTE THE COAXIAL CABLE FROM THE ANTENNA TO THE SIGNAL CABINET.
3. MAINTAIN PROPER CLEARANCE FROM ALL UTILITIES PER THE NATIONAL ELECTRICAL SAFETY CODE.
4. SEE 2018 NCDOT ROADWAY STANDARD DRAWINGS 1736.01 FOR WIRELESS RADIO ANTENNA TYPICAL DETAILS.
5. RETURN EXISTING TRANSCEIVERS TO THE NCDOT DIVISION 7 SIGNAL SHOP. THE DIVISION 7 OFFICE IS LOCATED AT 1584 YANCEYVILLE STREET, GREENSBORO, NC 27415 AND CAN BE REACHED AT 336-487-0175.
6. SIX (6) WEEKS PRIOR TO BEGINNING WORK ON THE SIGNAL SYSTEM, CONTACT THE NCDOT DIVISION 7 DEPUTY TRAFFIC ENGINEER MARK ALDRIDGE AT 336-487-0175 TO REQUEST THE DIVISION'S ASSISTANCE IN PROGRAMMING THE NEW ETHERNET EDGE SWITCHES WITH THE NECESSARY NETWORK CONFIGURATION DATA, INCLUDING BUT NOT LIMITED TO: THE PROJECT IP ADDRESS, DEFAULT GATEWAY, SUBNET MASK AND VLAN ID INFORMATION. NOTIFY THE DEPUTY TRAFFIC ENGINEER AFTER ALL WORK IS PERFORMED TO ENSURE THAT ALL FIBER CIRCUITS ARE FUNCTIONING PROPERLY. WORK IS NOT COMPLETE UNTIL THE SIGNAL SYSTEM IS BACK UP AND OPERATIONAL.
7. REMOVE EXISTING JUNCTION BOXES AND BACKFILL WITH AN APPROVED MATERIAL.

ACCELERATE ENGINEERING, PLLC
875 WALNUT STREET, SUITE 316
CARY, NC 27511
TEL: 919.263.5678 FAX: 919.263.5687
NC LICENSE NO. P-1442

Phase I Work Zone is Shown for Reference
TMP 1 Communications Plan

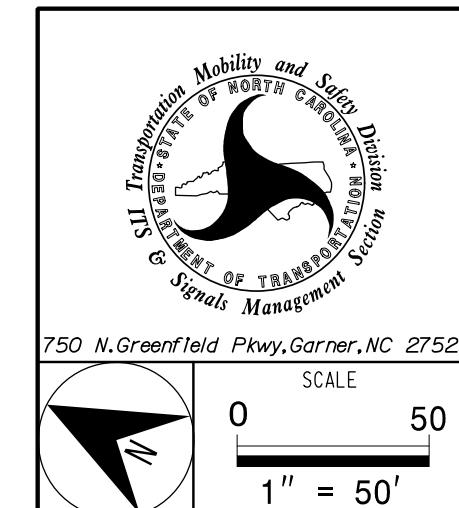


Table with project information: SR 1007 (Mebane Oaks Rd) CLS Cable Routing Plan, Division 7 Alamance County Mebane, PLAN DATE: November 2019, REVIEWED BY: Z. 'Gavin' Teng, PREPARED BY: Z. 'Gavin' Teng, REVIEWED BY: [blank], REVISIONS, INIT., DATE.

DOCUMENT NOT CONSIDERED FINAL UNLESS ALL SIGNATURES COMPLETED. SEAL: CHADWONG TENG, ENGINEER, NCDOT, 12/17/2019, CADD Filename: