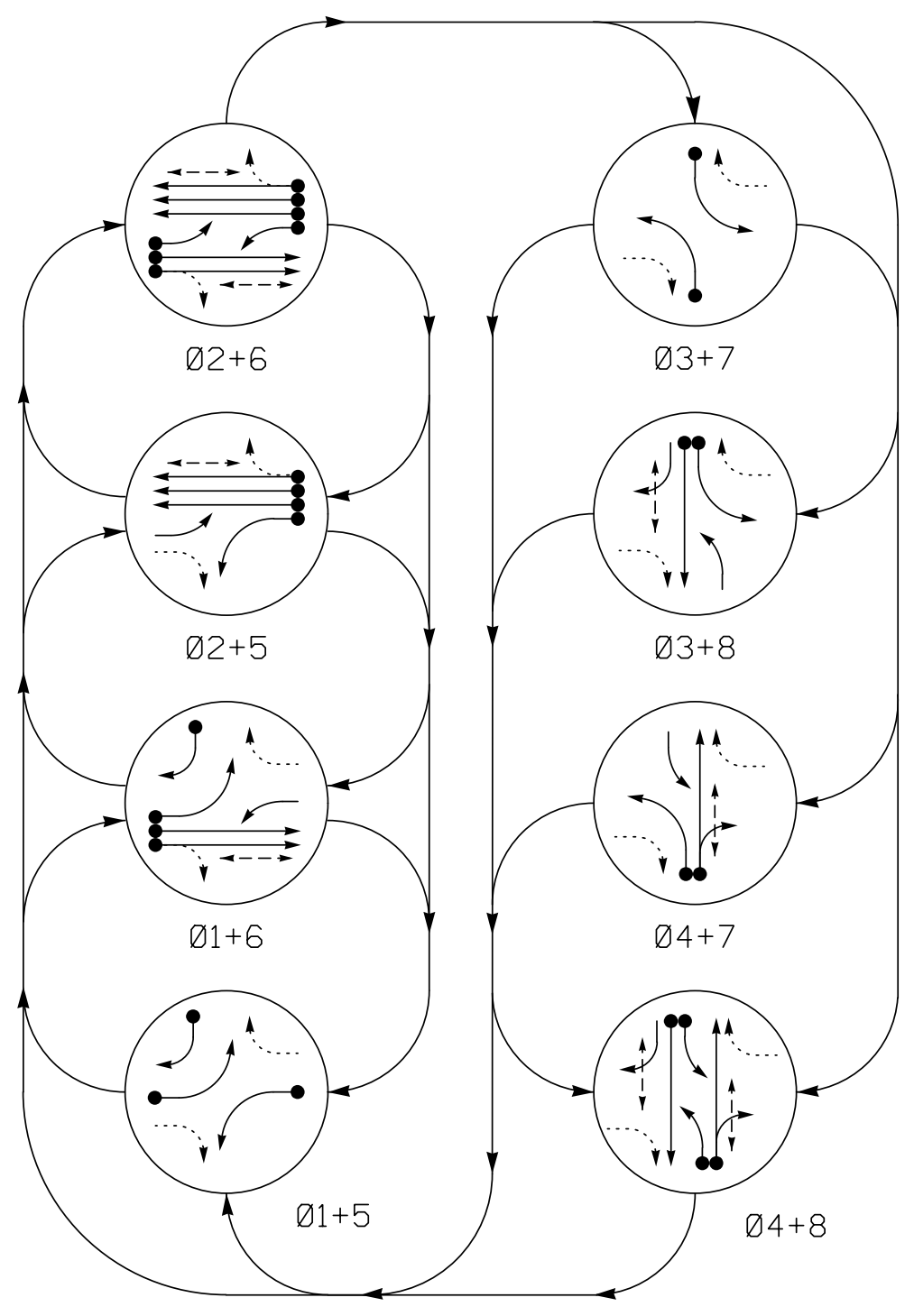
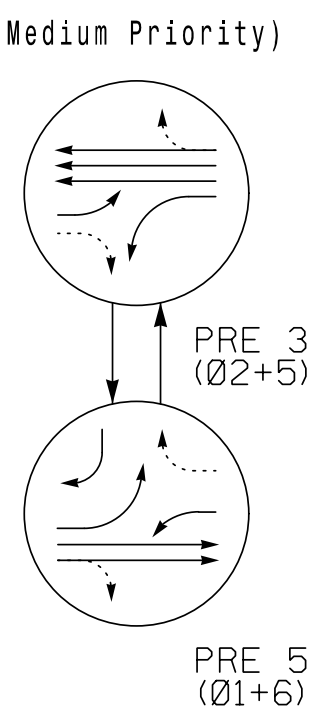


**8 Phase
Fully Actuated w/ Emergency Vehicle Preemption
SR 1007 (Mebane Oaks Rd) CLS
Signal System: 10705**

DEFAULT PHASING DIAGRAM



**DEFAULT PHASING
EV PREEMPT PHASES**
(Medium Priority)



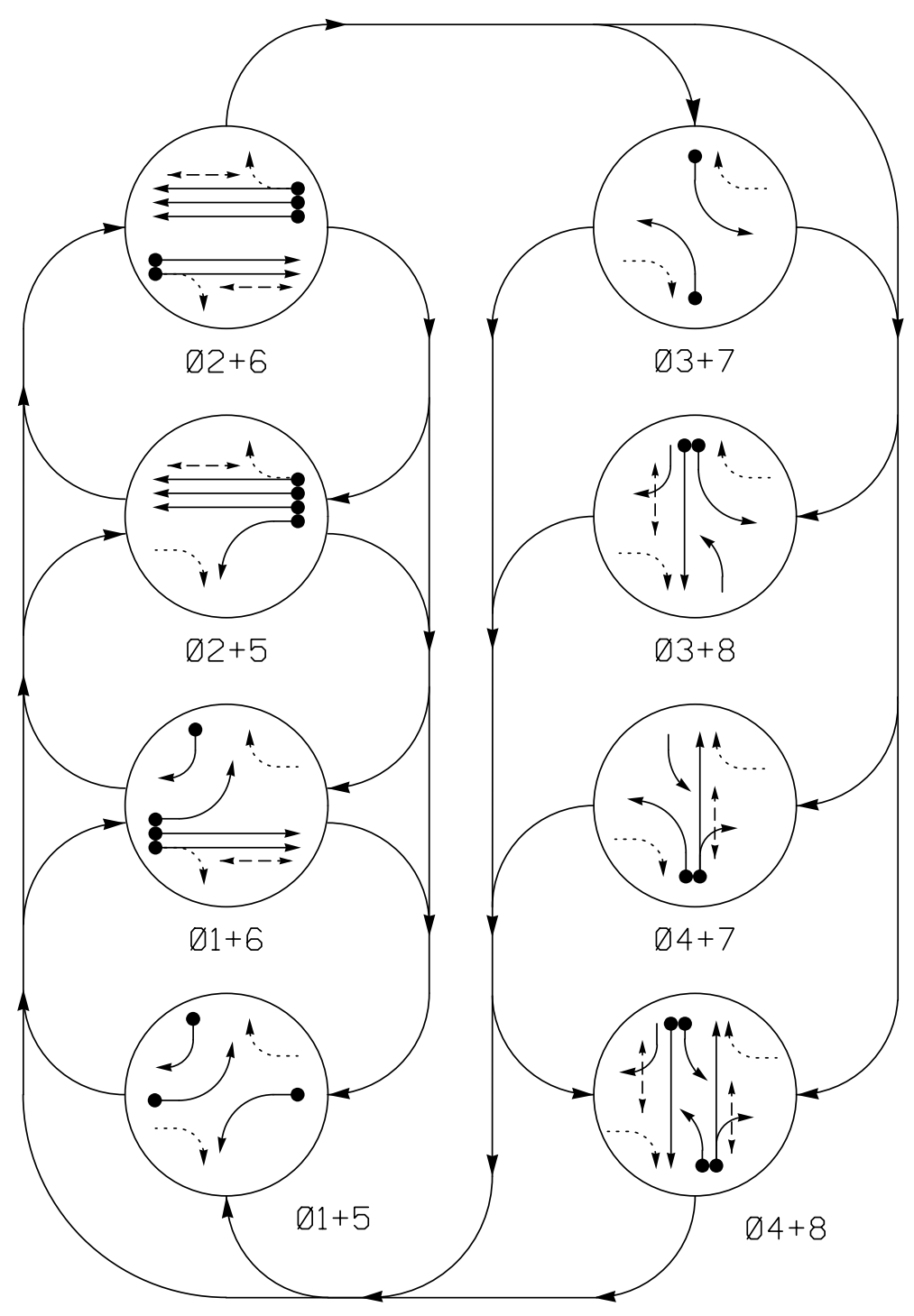
**DEFAULT PHASING
TABLE OF OPERATION**

SIGNAL FACE	PHASE										
	Ø1+5	Ø1+6	Ø2+5	Ø2+6	Ø3+7	Ø3+8	Ø4+7	Ø4+8	PRE 3	PRE 5	FLASH
11	←	←	←	←	←	←	←	←	←	←	←
21, 22, 23	R	R	G	G	R	R	R	R	G	R	Y
31	←	←	←	←	←	←	←	←	←	←	←
41, 42, 43	R	R	R	R	R	R	R	R	G	R	R
51	←	←	←	←	←	←	←	←	←	←	←
61, 62	R	G	R	G	R	R	R	R	R	G	Y
71	←	←	←	←	←	←	←	←	←	←	←
81	R	R	R	R	R	G	R	G	R	R	R
82	R	R	R	R	R	G	R	G	R	R	R
P21,P22	DW	DW	W	W	DW	DW	DW	DW	DW	DW	DRK
P41,P42	DW	DW	DW	DW	DW	DW	W	W	DW	DW	DRK
P61,P62	DW	W	DW	W	DW	DW	DW	DW	DW	DW	DRK
P81,P82	DW	DW	DW	DW	DW	W	DW	W	DW	DW	DRK

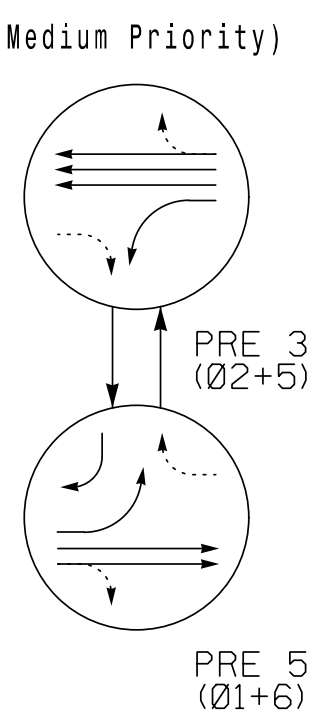
NOTES

1. Refer to "Roadway Standard Drawings NCDOT" dated January 2018 and "Standard Specifications for Roads and Structures" dated January 2018.
2. Do not program signal for late night flashing operation unless otherwise directed by the Engineer.
3. Phase 1 and/or phase 5 may be lagged.
4. Phase 3 and/or phase 7 may be lagged.
5. Reposition existing pedestrian signal head numbered P41.
6. Set all detector units to presence mode.
7. Omit "WALK" and flashing "DON'T WALK" with no pedestrian calls.
8. Program pedestrian heads to countdown the flashing "Don't Walk" time only.
9. This intersection features a GPS Emergency Vehicle Preemption system.
10. The Division Traffic Engineer will determine the hours of use for each phasing plan.
11. Maximum times shown in timing chart are for free-run operation only. Coordinated signal system timing values supersede these values.
12. Closed loop system data:
Controller Asset #: 1349.

ALTERNATE PHASING DIAGRAM



**ALTERNATE PHASING
EV PREEMPT PHASES**
(Medium Priority)

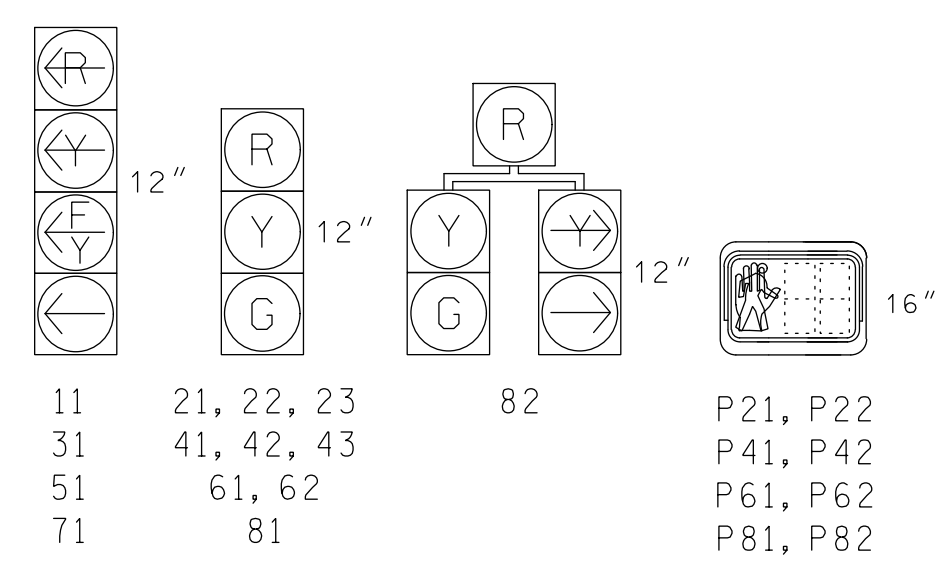


**ALTERNATE PHASING
TABLE OF OPERATION**

SIGNAL FACE	PHASE										
	Ø1+5	Ø1+6	Ø2+5	Ø2+6	Ø3+7	Ø3+8	Ø4+7	Ø4+8	PRE 3	PRE 5	FLASH
11	←	←	←	←	←	←	←	←	←	←	←
21, 22, 23	R	R	G	G	R	R	R	R	G	R	Y
31	←	←	←	←	←	←	←	←	←	←	←
41, 42, 43	R	R	R	R	R	R	R	R	G	R	R
51	←	←	←	←	←	←	←	←	←	←	←
61, 62	R	G	R	G	R	R	R	R	R	G	Y
71	←	←	←	←	←	←	←	←	←	←	←
81	R	R	R	R	R	G	R	G	R	R	R
82	R	R	R	R	R	G	R	G	R	R	R
P21,P22	DW	DW	W	W	DW	DW	DW	DW	DW	DW	DRK
P41,P42	DW	DW	DW	DW	DW	DW	W	W	DW	DW	DRK
P61,P62	DW	W	DW	W	DW	DW	DW	DW	DW	DW	DRK
P81,P82	DW	DW	DW	DW	DW	W	DW	W	DW	DW	DRK

SIGNAL FACE I.D.

All Heads L.E.D.

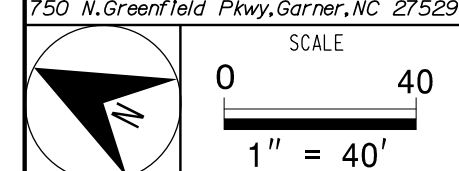


PHASING DIAGRAM DETECTION LEGEND

- ←●→ DETECTED MOVEMENT
- ←---→ UNDETECTED MOVEMENT (OVERLAP)
- ←---→ UNSIGNALIZED MOVEMENT
- ←--> PEDESTRIAN MOVEMENT

Signal Upgrade - Final Design (Sheet 2 of 2)

	<p>SR 1007 (Mebane Oaks Road) at SR 2186 (Brundage Lane) / SR 2210 (Forest Oaks Lane)</p>		<p align="center">SEAL ZHAOLONG TENG ENGINEER 032179</p>
	<p>Division 7 Alamance County Mebane</p>		
<p>PLAN DATE: November 2019</p>	<p>REVIEWED BY: Z. "Gavin" Teng</p>	<p>PREPARED BY: Z. "Gavin" Teng</p>	<p>REVIEWED BY:</p>
<p>REVISIONS</p>	<p>INIT.</p>	<p>DATE</p>	<p>12/17/2019</p>



PREPARED IN THE OFFICE OF:
Accelerate Engineering, PLLC
875 Walnut Street, Suite 316
Cary, NC 27511
Tel: 919.263.5678 Fax: 919.263.5687
NC License No. P-1442

488845SYTIME\$\$\$\$\$
 488845SYTIME\$\$\$\$\$
 488845SYTIME\$\$\$\$\$
 488845SYTIME\$\$\$\$\$