

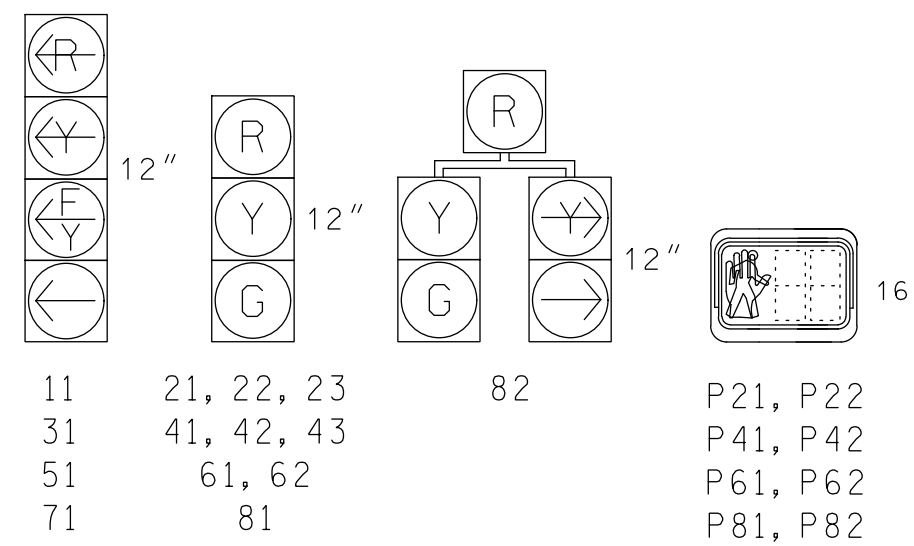
8 Phase
Fully Actuated w/ Emergency Vehicle Preemption
SR 1007 (Mebane Oaks Rd) CLS
Signal System: 10705

NOTES

1. Refer to "Roadway Standard Drawings NCDOT" dated January 2018 and "Standard Specifications for Roads and Structures" dated January 2018.
2. Do not program signal for late night flashing operation unless otherwise directed by the Engineer.
3. Phase 1 and/or phase 5 may be lagged.
4. Phase 3 and/or phase 7 may be lagged.
5. Reposition existing pedestrian signal head numbered P41.
6. Set all detector units to presence mode.
7. Omit "WALK" and flashing "DON'T WALK" with no pedestrian calls.
8. Program pedestrian heads to countdown the flashing "Don't Walk" time only.
9. This intersection features a GPS Emergency Vehicle Preemption system.
10. The Division Traffic Engineer will determine the hours of use for each phasing plan.
11. Maximum times shown in timing chart are for free-run operation only. Coordinated signal system timing values supersede these values.
12. Closed loop system data:
Controller Asset #: 1349.

SIGNAL FACE I.D.

All Heads L.E.D.



ASC/3 DETECTOR INSTALLATION CHART													
DETECTOR					PROGRAMMING								
LOOP	SIZE (FT)	DISTANCE FROM STOPBAR (FT)	TURNS	NEW LOOP	PHASE	CALLING	EXTEND TIME	DELAY TIME	USE ADDED INITIAL	TYPE	LOOP SYSTEM	NEW CARD	
1A	6X40	0	2-4-2	X	1	Yes	-	*15	-	S	-	X	
1B	6X40	0	2-4-2	X	#6	Yes	-	-	-	S	-	X	
2A	6X6	70	5	X	2	Yes	-	-	-	S	-	X	
2B	6X6	70	5	X	2	Yes	-	-	-	S	-	X	
2B	6X6	70	5	X	2	Yes	-	-	-	S	-	X	
3A	6X40	0	2-4-2	X	3	Yes	-	15	-	S	-	X	
4A	6X40	0	2-4-2	X	4	Yes	-	10	-	S	-	X	
5A	6X40	0	2-4-2	X	5	Yes	-	*15	-	S	-	X	
6A	6X6	70	3	X	6	Yes	-	-	-	S	-	X	
6B	6X6	70	3	X	6	Yes	-	-	-	S	-	X	
7A	6X40	0	2-4-2	X	7	Yes	-	15	-	S	-	X	
8A	6X40	0	2-4-2	X	8	Yes	-	3	-	S	-	X	
S17	6x6	+145	4	X	-	No	-	-	-	N	X	X	
S18	6x6	+145	4	X	-	No	-	-	-	N	X	X	
S19	6x6	+145	4	X	-	No	-	-	-	N	X	X	

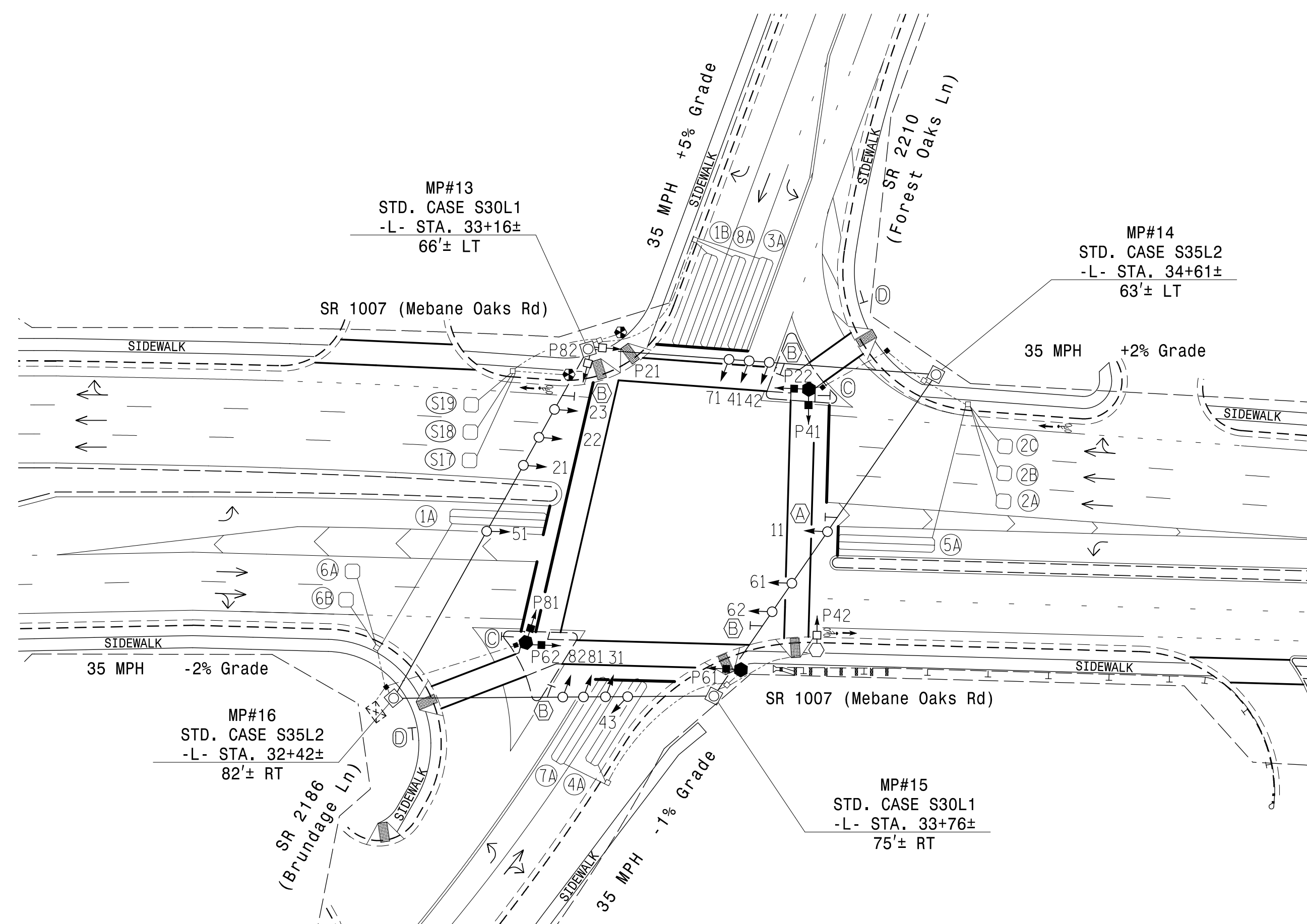
* Disable delay during Alternate Phasing Operation.
Disable Phase Call for Loop during Alternate Phasing Operation.

ASC/3 EV PREEMPT		
FUNCTION	PRE 3	PRE 5
Exit Phase(s)	2+6	2+6
Preempt Override	OFF	OFF
Delay Time	0	0
Ped Clear Through Yellow	Y	Y
Terminate Phases	N	N
Entrance Walk	1	1
Entrance Ped Clear	14	14
Entrance Min Green	1	1
Entrance Yellow Clear	25.5*	25.5*
Entrance Red Clear	25.5*	25.5*
Min Dwell Time	7	7
Preempt Input Extension Time	2	2
Preempt Max Time	120	120
Exit Yellow Clear	25.5*	25.5*
Exit Red Clear	25.5*	25.5*

* Time defaults to time used for phase during normal operation

ASC/3 TIMING CHART								
FEATURE	PHASE							
	1	2	3	4	5	6	7	8
Min Green *	7	10	7	7	7	10	7	7
Walk *	0	7	0	4	0	7	0	4
Ped Clear	0	14	0	25	0	15	0	28
Veh. Extension *	2.0	3.0	2.0	2.0	2.0	3.0	2.0	2.0
Max 1 *	20	90	20	30	20	90	20	30
Yellow	3.0	4.0	3.0	3.9	3.0	4.0	3.0	3.9
Red Clear	3.3	2.6	3.2	2.6	3.3	2.6	2.9	2.6
Red Revert	2.0	2.0	2.0	2.0	2.0	2.0	2.0	2.0
Actuations B4 Add *	-	-	-	-	-	-	-	-
Seconds / Actuation *	-	-	-	-	-	-	-	-
Max Initial *	-	-	-	-	-	-	-	-
Time Before Reduction *	-	-	-	-	-	-	-	-
Time To Reduce *	-	-	-	-	-	-	-	-
Minimum Gap	-	-	-	-	-	-	-	-
Locking Detector	-	X	-	-	-	X	-	-
Recall Position	-	VEH. RECALL	-	-	-	VEH. RECALL	-	-
Dual Entry	-	-	-	X	-	-	-	X
Simultaneous Gap	X	X	X	X	X	X	X	X

* These values may be field adjusted. Do not adjust Min Green and Extension times for phases 2 and 6 lower than what is shown.
Min Green for all other phases should not be lower than 4 seconds.



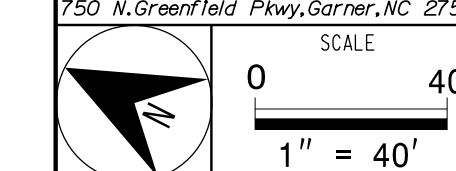
LEGEND	
PROPOSED	EXISTING

Signal Upgrade - Final Design (Sheet 1 of 2)

DOCUMENT NOT CONSIDERED FINAL UNLESS ALL SIGNATURES COMPLETED

SR 1007 (Mebane Oaks Road) at SR 2186 (Brundage Lane) / SR 2210 (Forest Oaks Lane)	
Division 7 Alamance County Mebane	
PLAN DATE: November 2019	REVIEWED BY: Z. "Gavin" Teng
PREPARED BY: Z. "Gavin" Teng	REVIEWED BY:
REVISIONS	INIT. DATE

PREPARED IN THE OFFICE OF:
Accelerate Engineering, PLLC
875 Walnut Street, Suite 316
Cary, NC 27511
Tel: 919.263.5678 Fax: 919.263.5687
NC License No. P-1442



REVISIONS	INIT.	DATE

12/17/2019
DATE
SIG. INVENTORY NO. 07-1349