

NOTE: UTILIZE FABRIC INSERT INLET PROTECTION DEVICES IN LIEU OF ROCK INLET SEDIMENT TRAPS, TYPE C TO AVOID IMPOUNDMENT OF WATER IN ROADWAY OPEN TO TRAFFIC

LOCHNER

H. W. LOCHNER, INC.
2840 PLAZA PLACE, SUITE 202
RALEIGH, NC 27612
(919) 571-7111

NC License
Number F-0159



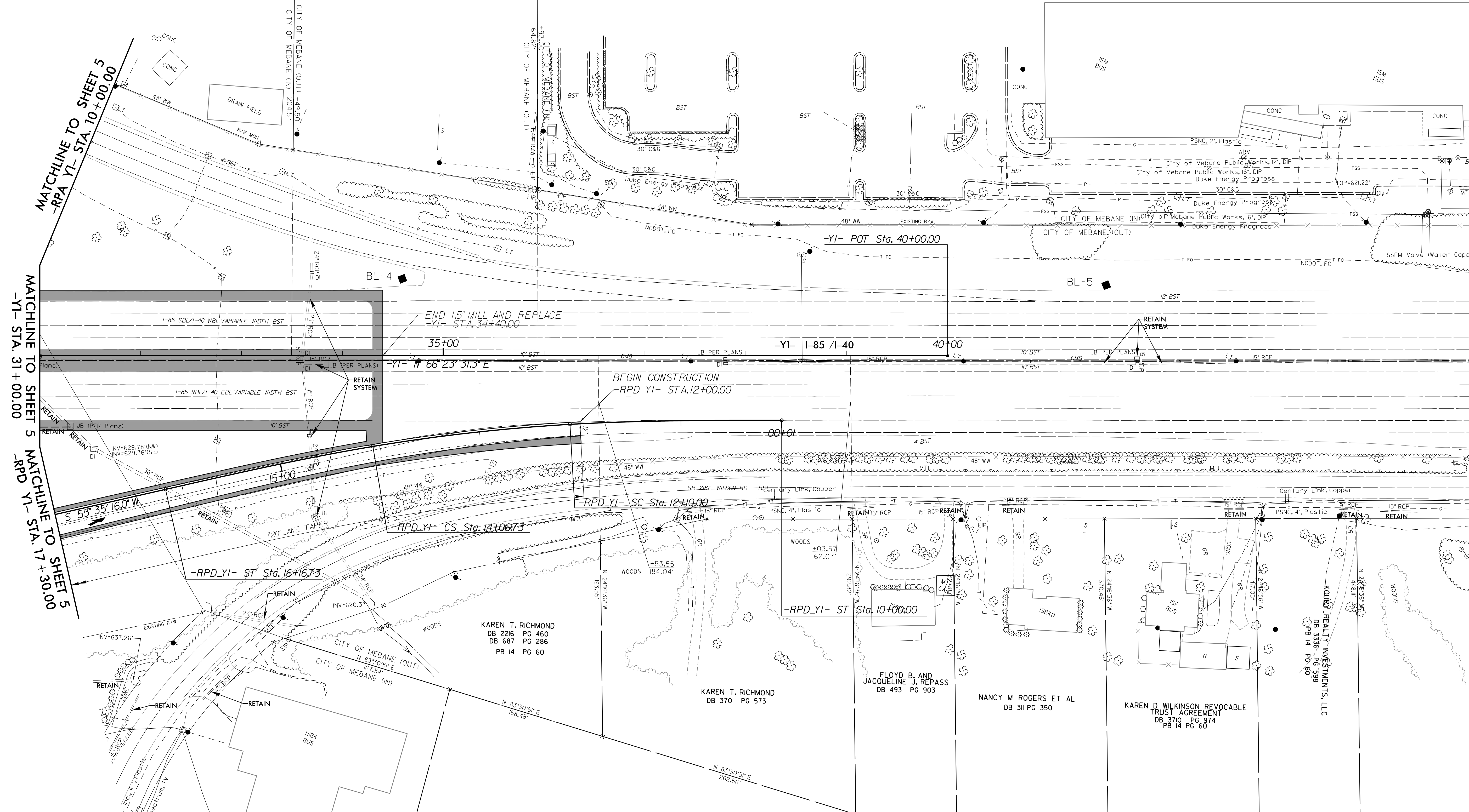
VHB Engineering, NC, P.C. (C-3705)
940 Main Campus Drive, Suite 500
Raleigh, NC 27606

PROJECT REFERENCE NO. 1-5711	SHEET NO. EC-13/CONST.08
RW SHEET NO.	
ROADWAY DESIGN ENGINEER	HYDRAULICS ENGINEER

-RPD_YI-

Pls Sta 11+40.02 Θs = 3° 18' 19.9" Ls = 210.00' LT = 140.02' ST = 70.02'	Pls Sta 13+08.46 Δ = 6° 11' 35.5" (LT) D = 3° 08' 53.2" L = 196.73' T = 98.46' R = 1,820.00' e = EXIST V = 60 MPH	Pls Sta 14+76.75 Θs = 3° 18' 19.9" Ls = 210.00' LT = 140.02' ST = 70.02'
--	--	--

NAD 83 201



MATCHLINE TO SHEET 5
-RPA YI- STA. 10+00.00

MATCHLINE TO SHEET 5
-YI- STA. 31+00.00

MATCHLINE TO SHEET 5
-RPD YI- STA. 17+30.00

TICON, INC AND H CLAY THOMAS
DB 3792 PG 53
PB 73 PG 375

TANGER PROPERTIES LIMITED PARTNERSHIP
DB 2859 PG 775
PB 73 PG 326

END 15\"/>

BEGIN CONSTRUCTION
-RPD YI- STA. 12+00.00

-RPD_YI- SC Sta. 12+10.00

-RPD_YI- ST Sta. 16+16.73

-RPD_YI- ST Sta. 10+00.00

KAREN T. RICHMOND
DB 2216 PG 460
DB 687 PG 286
PB 14 PG 60

KAREN T. RICHMOND
DB 370 PG 573

FLOYD B. AND
JACQUELINE J. REPASS
DB 493 PG 903

NANCY M ROGERS ET AL
DB 311 PG 350

KAREN D. WILKINSON REVOCABLE
TRUST AGREEMENT
DB 3710 PG 974
PB 14 PG 60

KOURI REALTY INVESTMENTS, LLC
DB 3336 PG 598
PB 14 PG 60