

8/17/99

NOTE: UTILIZE FABRIC INSERT INLET PROTECTION DEVICES IN LIEU OF ROCK INLET SEDIMENT TRAPS, TYPE C TO AVOID IMPOUNDMENT OF WATER IN ROADWAY OPEN TO TRAFFIC

**LOCHNER**  
 H. W. LOCHNER, INC.  
 2840 PLAZA PLACE, SUITE 202  
 RALEIGH, NC 27612  
 (919) 571-7111

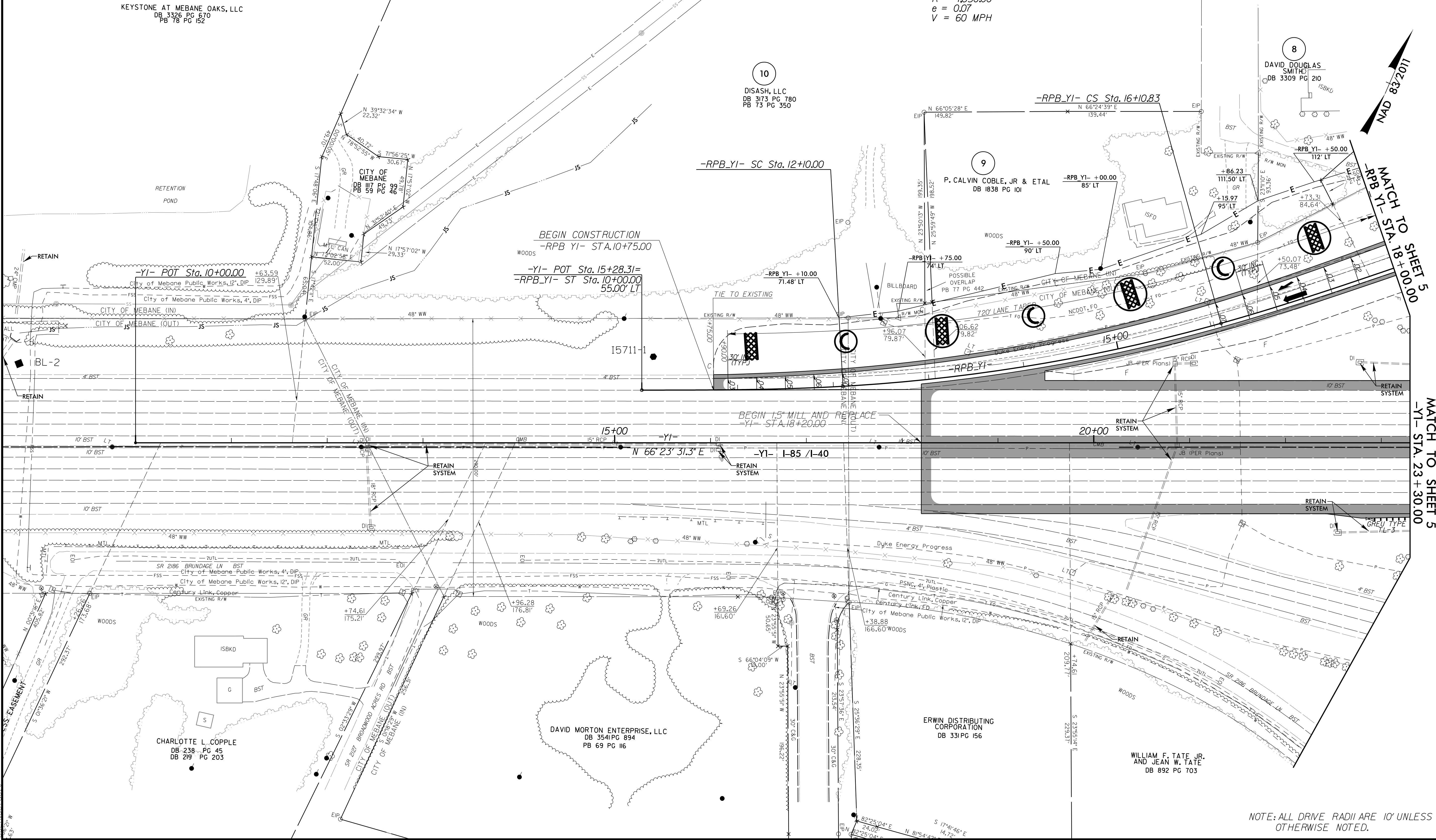
NC License  
 Number F-0159

**vhb**  
 VHB Engineering NC, P.C. (C-3705)  
 940 Main Campus Drive, Suite 500  
 Raleigh, NC 27606

PROJECT REFERENCE NO. I-5711	SHEET NO. EC-12/CONST.07
RW SHEET NO.	
ROADWAY DESIGN ENGINEER	HYDRAULICS ENGINEER

**-RPB YI-**

Pls Sta 11+40.02	Pl Sta 14+11.20	Pls Sta 16+80.85
$\Theta_s = 3^\circ 15' 06.9''$	$\Delta = 12^\circ 24' 50.4''$ (LT)	$\Theta_s = 3^\circ 15' 06.9''$
$L_s = 210.00'$	$D = 3^\circ 05' 49.4''$	$L_s = 210.00'$
$LT = 140.02'$	$L = 400.83'$	$LT = 140.02'$
$ST = 70.02'$	$T = 201.20'$	$ST = 70.02'$
	$R = 1,850.00'$	
	$e = 0.07'$	
	$V = 60$ MPH	



12/16/2020  
I:\5711\REV.FINAL\_PSH07.dgn  
PSH07.dgn

NOTE: ALL DRIVE RADII ARE 10' UNLESS OTHERWISE NOTED.

MATCH TO SHEET 5  
 -RPB YI- STA. 18+00.00  
 MATCH TO SHEET 5  
 -YI- STA. 23+30.00