

8/17/99

LOCHNER

H. W. LOCHNER, INC.
2840 PLAZA PLACE, SUITE 202
RALEIGH, NC 27612
(919) 571-7111

NC License
Number F-0159



VHB Engineering NC, P.C. (C-3705)
940 Main Campus Drive, Suite 500
Raleigh, NC 27606

PROJECT REFERENCE NO. I-5711	SHEET NO. EC-II/CONST.06
R/W SHEET NO.	
ROADWAY DESIGN ENGINEER	HYDRAULICS ENGINEER

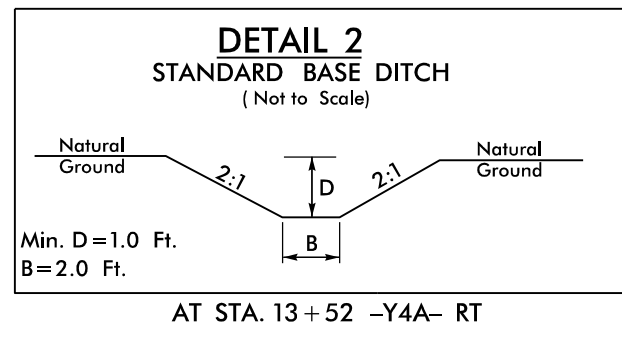
NOTE: UTILIZE FABRIC INSERT INLET PROTECTION DEVICES IN LIEU OF ROCK INLET SEDIMENT TRAPS, TYPE C TO AVOID IMPOUNDMENT OF WATER IN ROADWAY OPEN TO TRAFFIC

60 x 30 x 3
1.5 inch Skimmer
with 1.25 inch
Orifice Diameter
6 ft. weir
ID 6.1

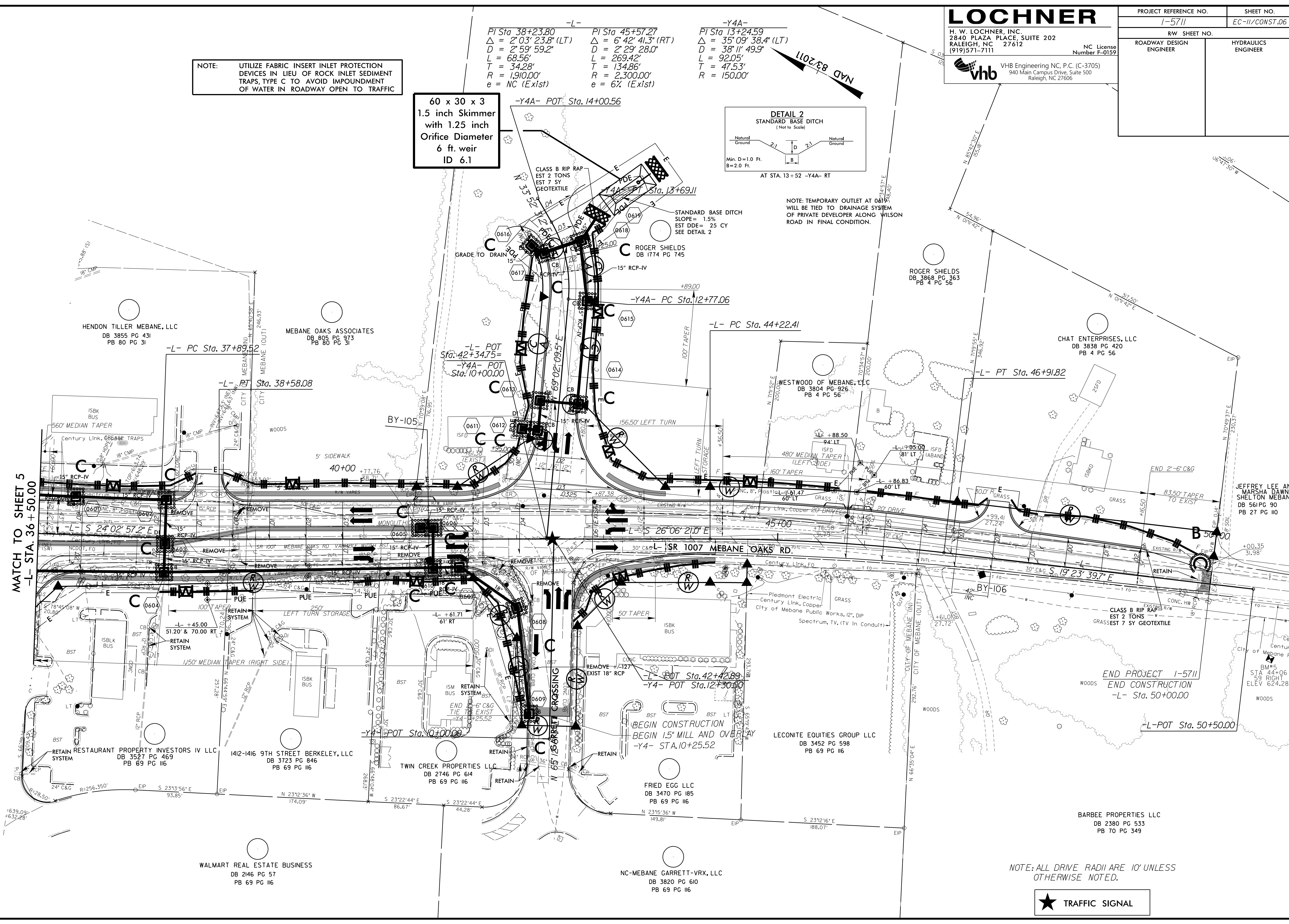
-L-
PI Sta 38+23.80
 $\Delta = 2^{\circ}03'23.8"$ (LT)
 $D = 2^{\circ}59'59.2"$
 $L = 68.56'$
 $T = 34.28'$
 $R = 190.00'$
 $e = NC$ (Exist)

-L-
PI Sta 45+57.27
 $\Delta = 6^{\circ}42'41.3"$ (RT)
 $D = 2^{\circ}29'28.0"$
 $L = 269.42'$
 $T = 134.86'$
 $R = 2,300.00'$
 $e = 6\%$ (Exist)

-Y4A-
PI Sta 13+24.59
 $\Delta = 35^{\circ}09'38.4"$ (LT)
 $D = 38^{\circ}11'49.9"$
 $L = 92.05'$
 $T = 47.53'$
 $R = 150.00'$



NOTE: TEMPORARY OUTLET AT 0615 WILL BE TIED TO DRAINAGE SYSTEM OF PRIVATE DEVELOPER ALONG WILSON ROAD IN FINAL CONDITION.



MATCH TO SHEET 5
-L- STA. 36+50.00

END PROJECT I-5711
END CONSTRUCTION
-L- Sta. 50+00.00



NOTE: ALL DRIVE RADII ARE 10' UNLESS OTHERWISE NOTED.

12/16/2020
I:\Projects\I-5711\REV.FINAL_PSH06.dgn
PSH