

NOTE: UTILIZE FABRIC INSERT INLET PROTECTION DEVICES IN LIEU OF ROCK INLET SEDIMENT TRAPS, TYPE C TO AVOID IMPOUNDMENT OF WATER IN ROADWAY OPEN TO TRAFFIC

CLEARING AND GRUBBING EROSION CONTROL FOR CONSTRUCTION SHEET 8

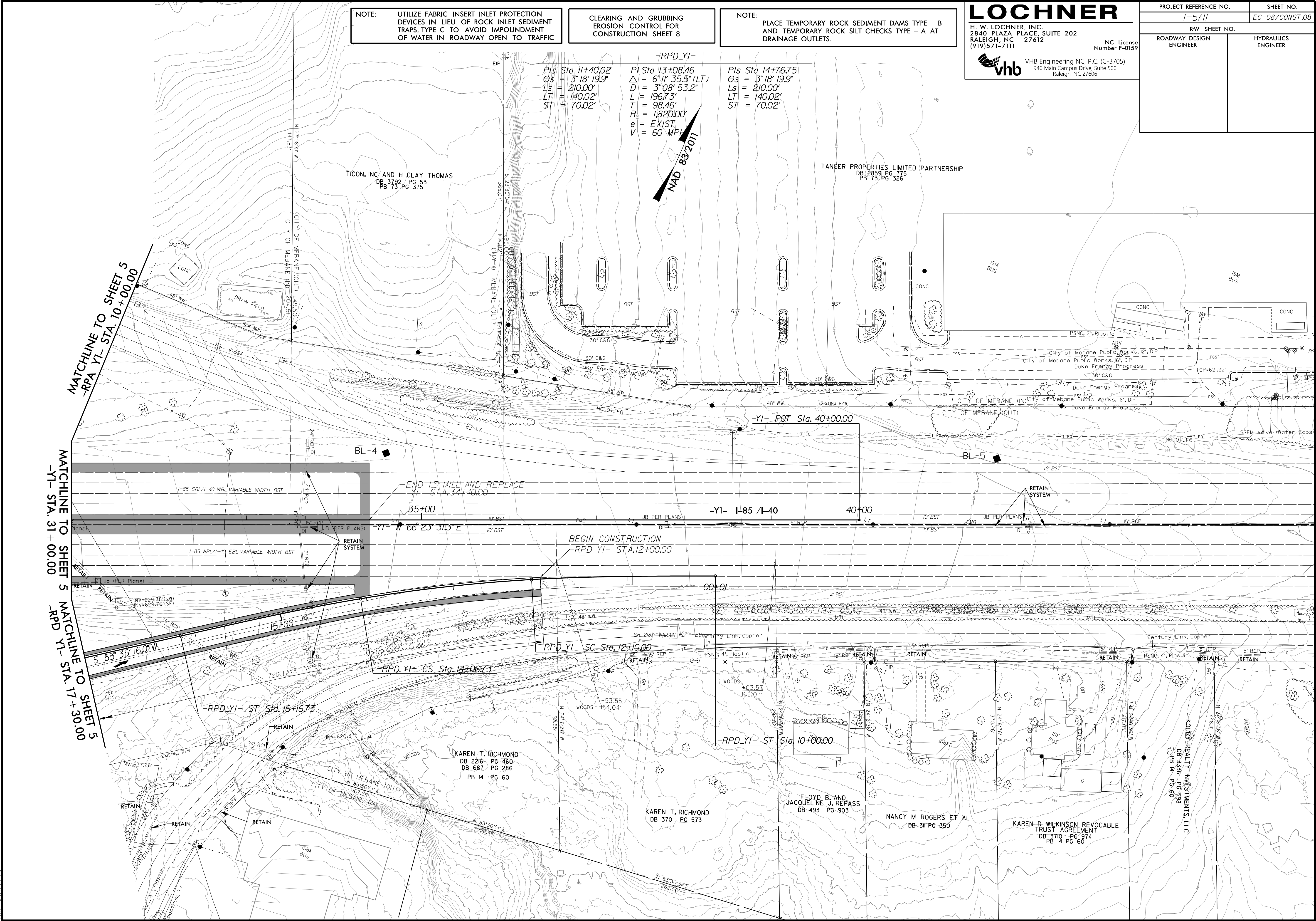
NOTE: PLACE TEMPORARY ROCK SEDIMENT DAMS TYPE - B AND TEMPORARY ROCK SILT CHECKS TYPE - A AT DRAINAGE OUTLETS.

**LOCHNER**  
 H. W. LOCHNER, INC.  
 2840 PLAZA PLACE, SUITE 202  
 RALEIGH, NC 27612  
 (919) 571-7111

NC License  
 Number F-0159

**vhb**  
 VHB Engineering NC, P.C. (C-3705)  
 940 Main Campus Drive, Suite 500  
 Raleigh, NC 27606

PROJECT REFERENCE NO. 1-5711	SHEET NO. EC-08/CONST.08
R/W SHEET NO.	
ROADWAY DESIGN ENGINEER	HYDRAULICS ENGINEER



MATCHLINE TO SHEET 5  
-RPA YI- STA. 10+00.00

MATCHLINE TO SHEET 5  
-YI- STA. 31+00.00

MATCHLINE TO SHEET 5  
-RPD YI- STA. 17+30.00

**-RPD\_YI-**

Pls Sta 11+40.02	Pl Sta 13+08.46	Pls Sta 14+76.75
Os = 3' 18" 19.9'	Δ = 6' 11" 35.5' (LT)	Os = 3' 18" 19.9'
Ls = 210.00'	D = 3' 08" 53.2"	Ls = 210.00'
LT = 140.02'	L = 196.73'	LT = 140.02'
ST = 70.02'	T = 98.46'	ST = 70.02'
	R = 1,820.00'	
	e = EXIST	
	V = 60 MPH	

NAD 83 2011

TICON, INC AND H CLAY THOMAS  
DB 3792 PG 53  
PB 73 PG 375

TANGER PROPERTIES LIMITED PARTNERSHIP  
DB 2859 PG 775  
PB 73 PG 326

BL-4

BL-5

END 15' MILL AND REPLACE  
-YI- STA. 34+40.00

BEGIN CONSTRUCTION  
-RPD YI- STA. 12+00.00

-RPD\_YI- SC Sta. 12+10.00

-RPD\_YI- ST Sta. 16+16.73

-RPD\_YI- ST Sta. 10+00.00

KAREN T. RICHMOND  
DB 2216 PG 460  
DB 687 PG 286  
PB 14 PG 60

KAREN T. RICHMOND  
DB 370 PG 573

FLOYD B. AND  
JACQUELINE J. REPASS  
DB 493 PG 903

NANCY M ROGERS ET AL  
DB-311 PG-350

KAREN D WILKINSON REVOCABLE  
TRUST AGREEMENT  
DB 3710 PG 974  
PB 14 PG 60

KOURI REALTY INVESTMENTS, LLC  
DB 3336 PG 598  
PB 14 PG 60