

8/17/99

CLEARING AND GRUBBING  
EROSION CONTROL FOR  
CONSTRUCTION SHEET 7

NOTE:  
PLACE TEMPORARY ROCK SEDIMENT DAMS TYPE - B  
AND TEMPORARY ROCK SILT CHECKS TYPE - A AT  
DRAINAGE OUTLETS.

NOTE:  
UTILIZE FABRIC INSERT INLET PROTECTION  
DEVICES IN LIEU OF ROCK INLET SEDIMENT  
TRAPS, TYPE C TO AVOID IMPOUNDMENT  
OF WATER IN ROADWAY OPEN TO TRAFFIC

# LOCHNER

H. W. LOCHNER, INC.  
2840 PLAZA PLACE, SUITE 202  
RALEIGH, NC 27612  
(919)571-7111

NC License  
Number E-0159



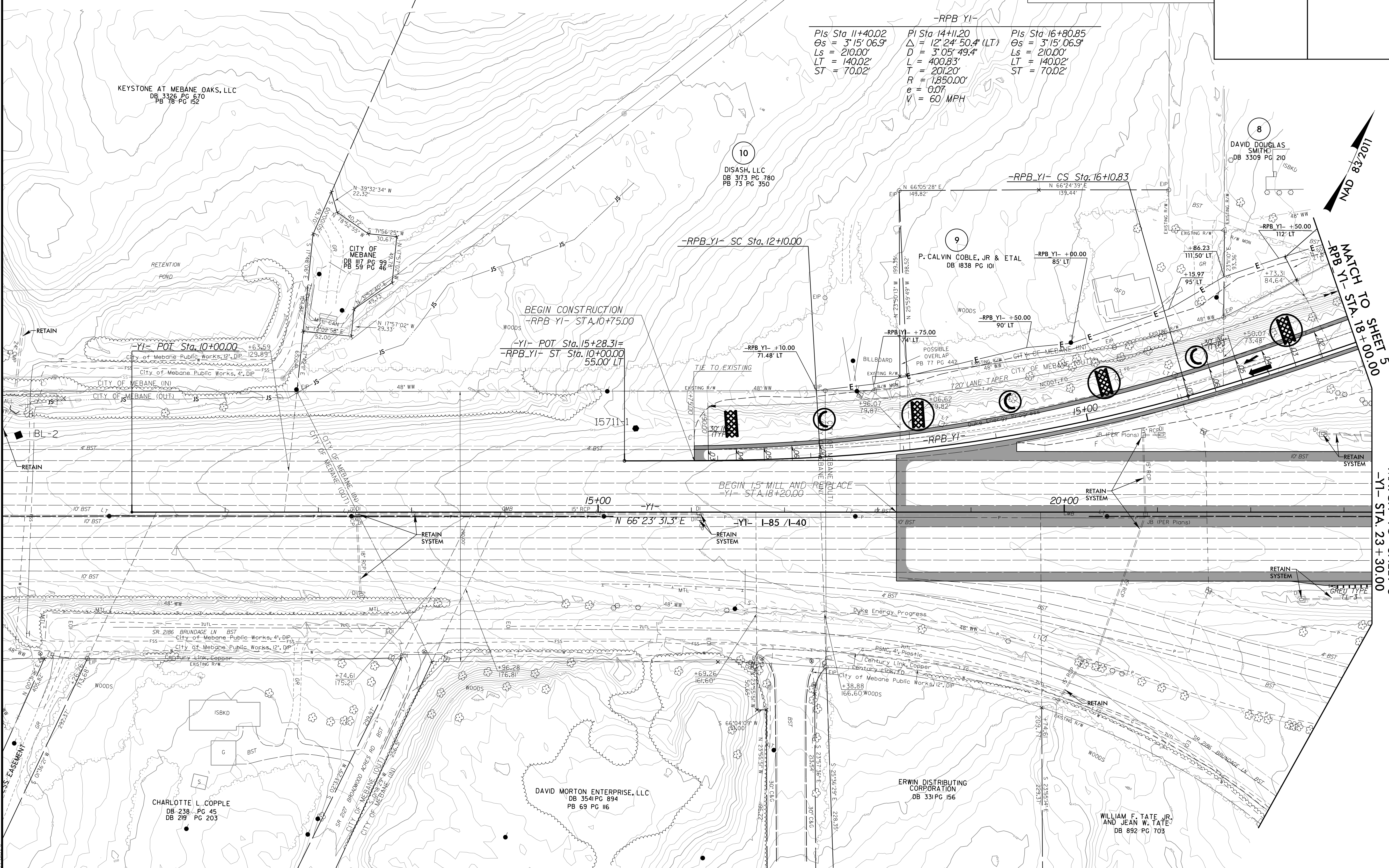
VHB Engineering NC, P.C. (C-3705)  
940 Main Campus Drive, Suite 500  
Raleigh, NC 27606

|                                 |                             |
|---------------------------------|-----------------------------|
| PROJECT REFERENCE NO.<br>I-5711 | SHEET NO.<br>EC-07/CONST.07 |
| R/W SHEET NO.                   |                             |
| ROADWAY DESIGN<br>ENGINEER      | HYDRAULICS<br>ENGINEER      |

-RPB YI-  
 PIs Sta 11+40.02  
 $\Delta s = 3'15'06.9"$   
 $L_s = 210.00'$   
 $LT = 140.02'$   
 $ST = 70.02'$

Pi Sta 14+11.20  
 $\Delta = 12'24'50.4" (LT)$   
 $D = 3'05'49.4"$   
 $L = 400.83'$   
 $T = 201.20'$   
 $R = 1,850.00'$   
 $e = 0.07'$   
 $V = 60 MPH$

Pi Sta 16+80.85  
 $\Delta s = 3'15'06.9"$   
 $L_s = 210.00'$   
 $LT = 140.02'$   
 $ST = 70.02'$



KEYSTONE AT MEBANE OAKS, LLC  
DB 3326 PG 670  
PB 78 PG 152

10  
DISASH, LLC  
DB 3173 PG 780  
PB 73 PG 350

9  
P. CALVIN COBLE, JR & ETAL  
DB 1838 PG 101

8  
DAVID DOUGLAS SMITH  
DB 3309 PG 210

CHARLOTTE L. COPPLE  
DB 238 PG 45  
DB 219 PG 203

DAVID MORTON ENTERPRISE, LLC  
DB 3541 PG 894  
PB 69 PG 116

ERWIN DISTRIBUTING CORPORATION  
DB 331 PG 156

WILLIAM F. TATE JR.  
AND JEAN W. TATE  
DB 892 PG 703

NOTE: ALL DRIVE RADII ARE 10' UNLESS OTHERWISE NOTED.

NAD 83/2011

MATCH TO STA. 18+00.00  
-RPB YI- STA. 18+00.00

MATCH TO SHEET 5  
-YI- STA. 23+30.00

12/16/2020  
I:\5711\I-5711.REU.CG.PSH07.dgn  
12/16/2020