

REVISIONS

**LOCHNER**

H. W. LOCHNER, INC.  
2840 PLAZA PLACE, SUITE 202  
RALEIGH, NC 27612  
(919) 571-7111

NC License  
Number F-0159

**vhb**  
VHB Engineering NC, P.C. (C-3705)  
940 Main Campus Drive, Suite 500  
Raleigh, NC 27606

PROJECT REFERENCE NO. **1-5711**

SHEET NO. **6**

RW SHEET NO.

ROADWAY DESIGN ENGINEER  
2/22/2021

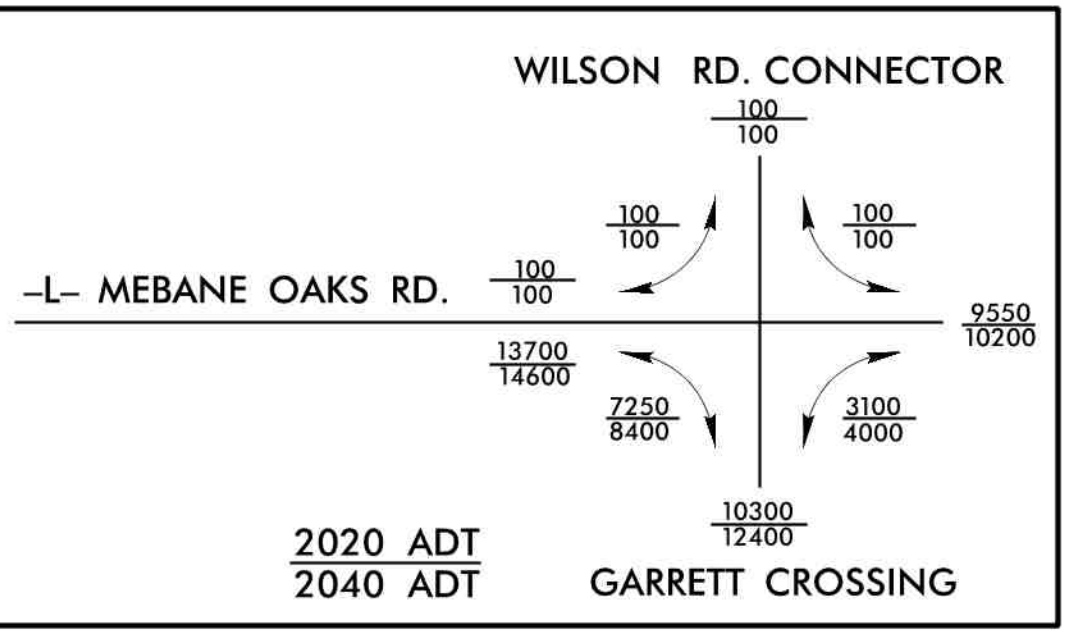
HYDRAULICS ENGINEER  
2/22/2021

Professional Engineer Seal  
NORTH CAROLINA  
SEAL 25523  
FRANK E. FLEMING  
2/22/2021

Professional Engineer Seal  
NORTH CAROLINA  
SEAL 20147  
FRANK E. FLEMING  
2/22/2021

**DOCUMENT NOT CONSIDERED FINAL  
UNLESS ALL SIGNATURES COMPLETED**

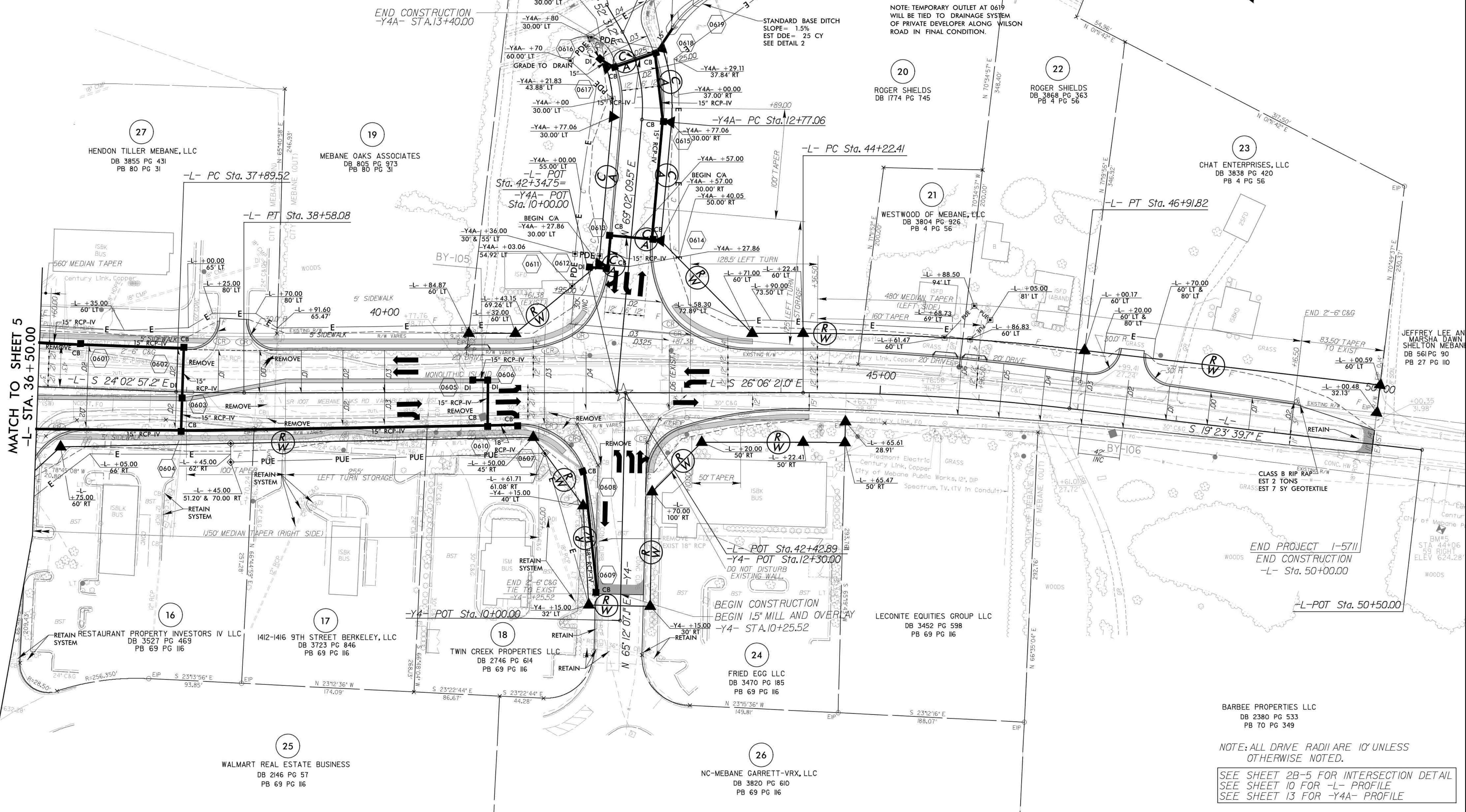
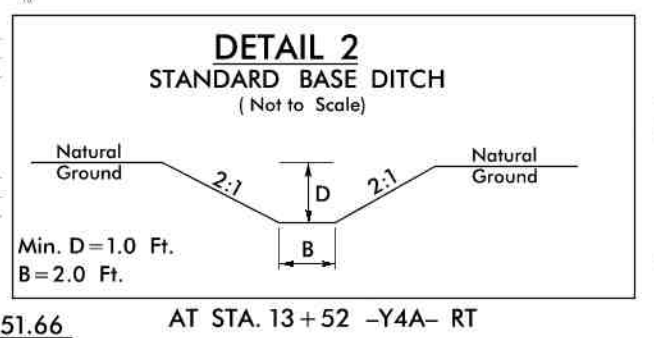
★ TRAFFIC SIGNAL



PI Sta 38+23.80 Δ = 2° 03' 23.8" (LT)  
D = 2° 59' 59.2"  
L = 68.56'  
T = 34.28'  
R = 1,910.00'  
e = NC (Ex1st)

PI Sta 45+57.27 Δ = 6° 42' 41.3" (RT)  
D = 2° 29' 28.0"  
L = 269.42'  
T = 134.86'  
R = 2,300.00'  
e = 6% (Ex1st)

-Y4A-  
PI Sta 13+24.59 Δ = 35° 09' 38.4" (LT)  
D = 38° 11' 49.9"  
L = 92.05'  
T = 47.53'  
R = 150.00'  
e = RC



NOTE: ALL DRIVE RADII ARE 10' UNLESS OTHERWISE NOTED.

SEE SHEET 2B-5 FOR INTERSECTION DETAIL  
SEE SHEET 10 FOR -L- PROFILE  
SEE SHEET 13 FOR -Y4A- PROFILE