

6/2/2020

ROADWAY DESIGN ENGINEER 2/9/2020  
 PAVEMENT DESIGN ENGINEER 2/10/2020

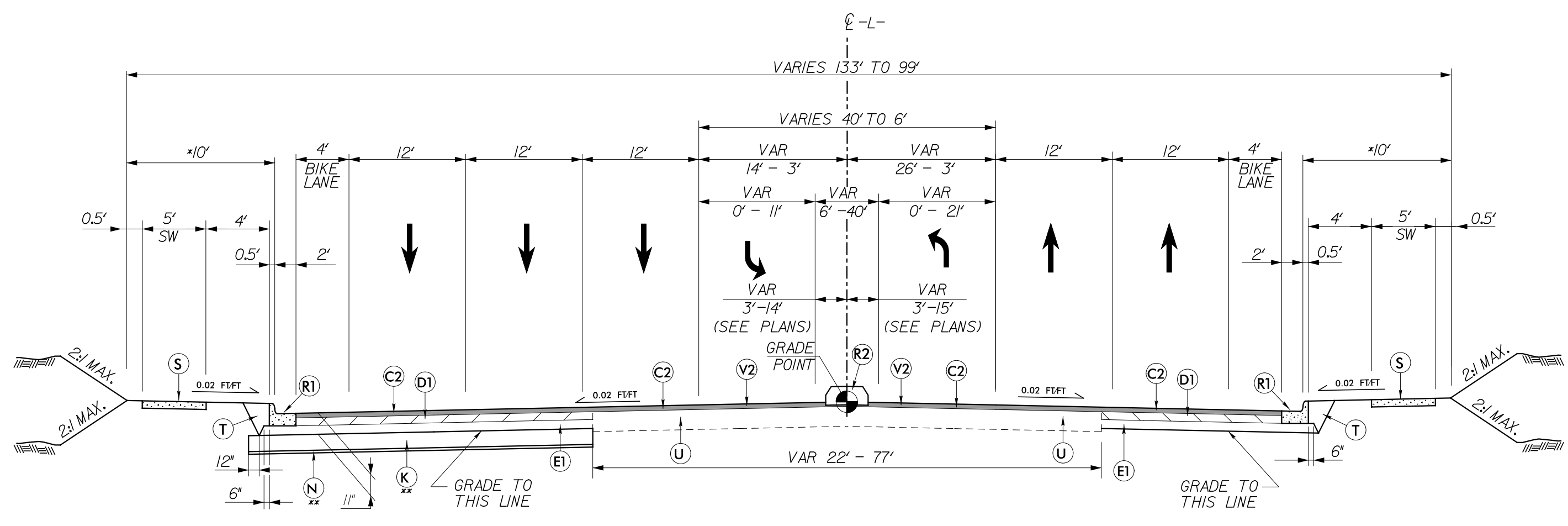
SEAL 25523  
 BRAD K. EASON  
 ENGINEER

SEAL 022896  
 CAROL S. MORRISON  
 ENGINEER

**DOCUMENT NOT CONSIDERED FINAL UNLESS ALL SIGNATURES COMPLETED**

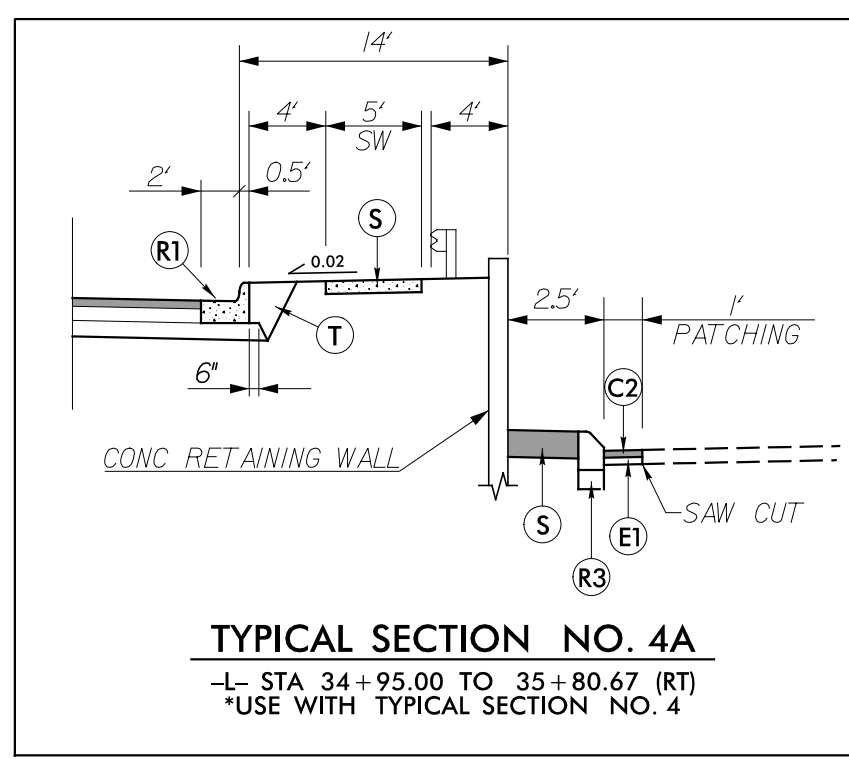
**PAVEMENT SCHEDULE**  
 FINAL PAVEMENT DESIGN, 10/16/19

CODE	DESCRIPTION
C2	3" S9.5B
C6	1.5" S9.5D
D1	4" I19.0C
E1	4" B25.0C
K	SUBGRADE STABILIZATION
N	GEOTEXTILE FOR SOIL STAB.
R1	CONC C & G (2'-6")
R2	MONO. CONC ISLAND
R3	8"x12" CONC. CURB
S	4" SIDEWALK
T	EARTH MATERIAL
U	EXIST PAVEMENT
V1	1 1/2" MILLING
V2	3" MILLING
W	WEDGING
Y	MILLED RUMBLE STRIPS



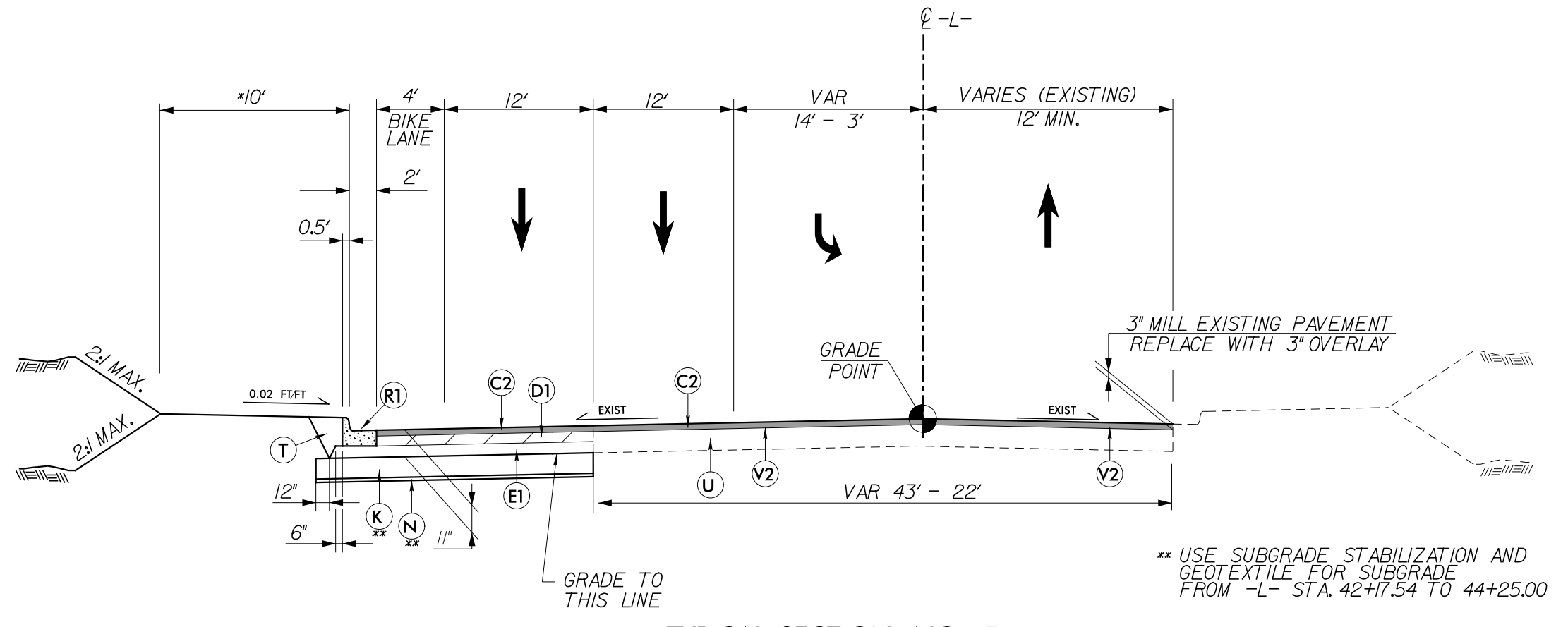
**TYPICAL SECTION NO. 4**  
 -L- MEBANE OAKS RD.

\* ADD 4' AT GUARDRAIL LOCATIONS  
 \*\* USE SUBGRADE STABILIZATION AND GEOTEXTILE FOR SUBGRADE FROM -L- STA. 41+75.00 TO 42+17.54



**TYPICAL SECTION NO. 4A**  
 -L- STA 34+95.00 TO 35+80.67 (RT)  
 \*USE WITH TYPICAL SECTION NO. 4

USE TYPICAL SECTION NO. 4 FOR:  
 -L- STA 33+08.78 TO 42+17.54

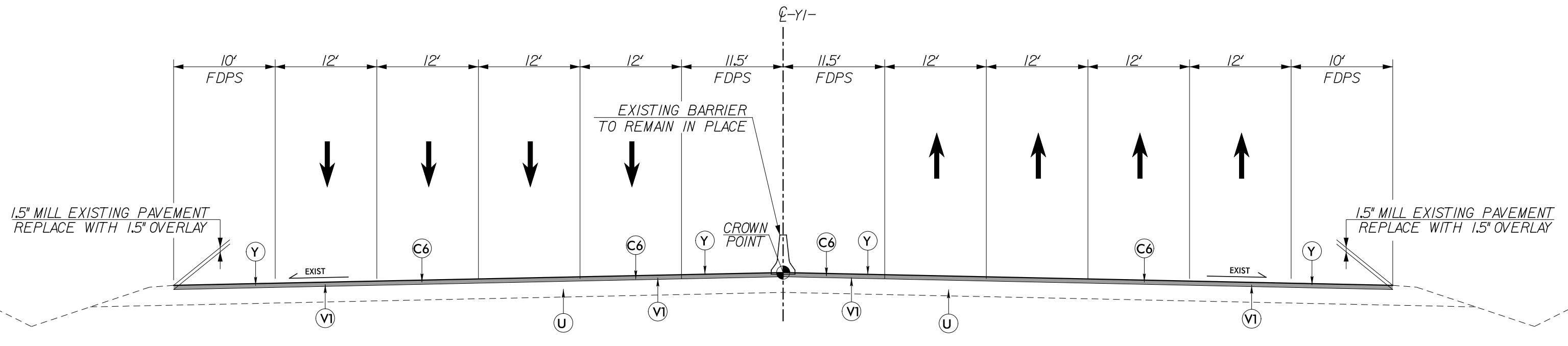
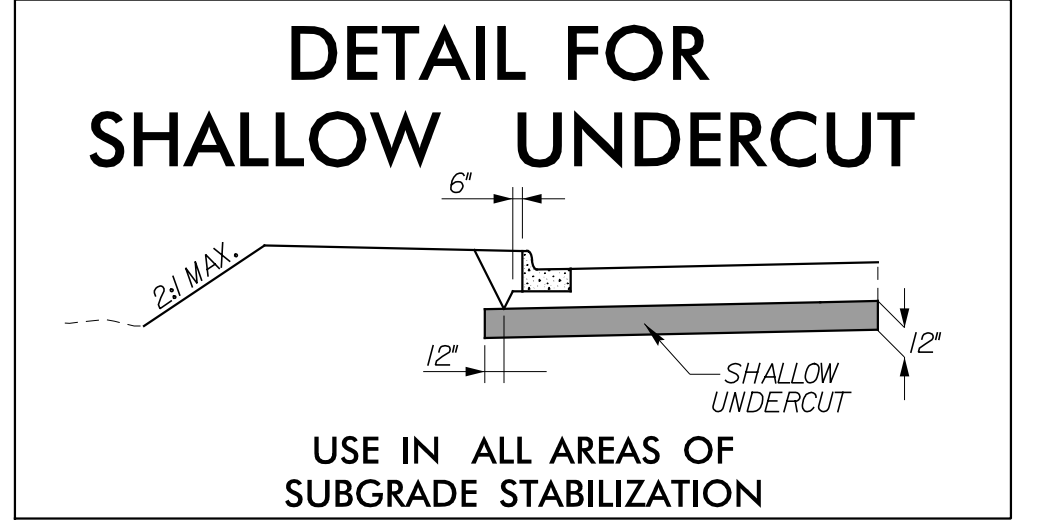


**TYPICAL SECTION NO. 5**  
 -L- MEBANE OAKS RD.

\*\* USE SUBGRADE STABILIZATION AND GEOTEXTILE FOR SUBGRADE FROM -L- STA. 42+17.54 TO 44+25.00

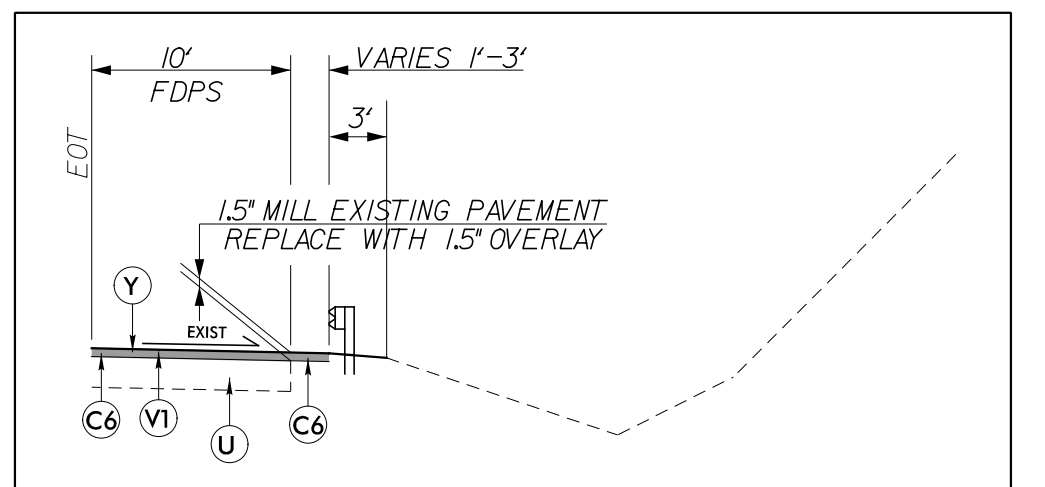
USE TYPICAL SECTION NO. 5 FOR:  
 -L- STA 42+17.54 TO 49+16.50

TRANSITION FROM TYPICAL NO. 5 TO EXISTING  
 -L- STA 49+16.50 TO STA 50+00.00

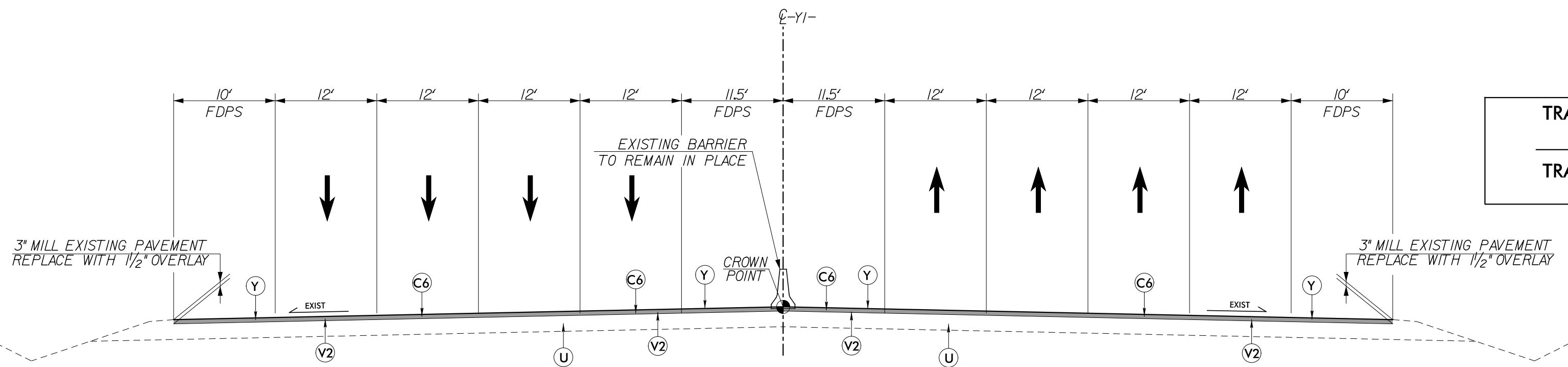


**TYPICAL SECTION NO. 6**  
 -Y1- I-85 /I-40

USE TYPICAL SECTION NO. 6 FOR:  
 -Y1- STA 18+20.00 TO 24+11.00  
 -Y1- STA 28+80.23 TO 34+40.00



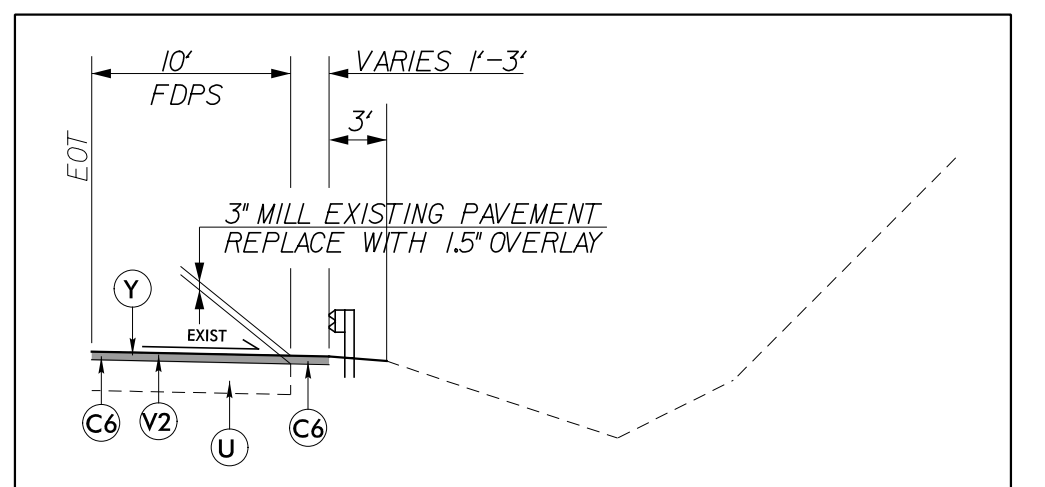
**TYPICAL SECTION NO. 6A**  
 -Y1- STA 22+83.95 TO 24+11.00 (RT)  
 -Y1- STA 28+80.23 TO 30+00.00  
 \*USE WITH TYPICAL SECTION NO. 6



**TYPICAL SECTION NO. 7**  
 -Y1- I-85 /I-40

TRANSITION FROM MILLING 1.5" TO MILLING 3"  
 -Y1- STA 24+11.00 TO STA 24+86.00  
 TRANSITION FROM MILLING 3" TO MILLING 1.5"  
 -Y1- STA 28+05.23 TO STA 28+80.23

USE TYPICAL SECTION NO. 7 FOR:  
 -Y1- STA 24+86.00 TO 28+05.23



**TYPICAL SECTION NO. 7A**  
 -Y1- STA 24+11.00 TO 25+83.98 (RT)  
 -Y1- STA 27+00.55 TO 28+80.23  
 \*USE WITH TYPICAL SECTION NO. 7

12/15/2020  
 12:57:15 PM  
 R001\_TYP\_02A.dgn  
 RKNIGHT