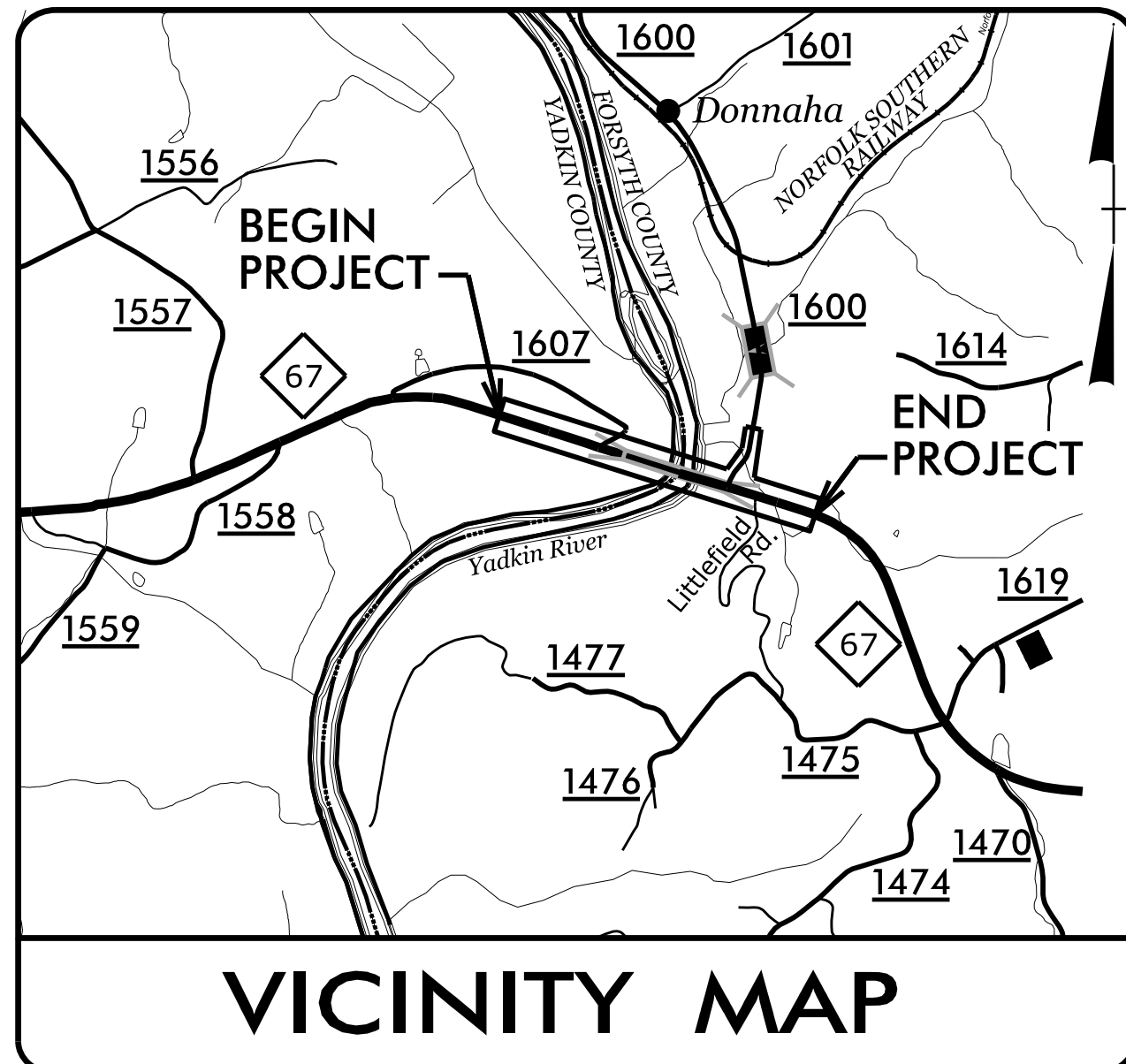


09/20/2020

TIP PROJECT: B-5825

STATE OF NORTH CAROLINA
DIVISION OF HIGHWAYS

T.I.P. NO.	SHEET NO.
B-5825	UC-1



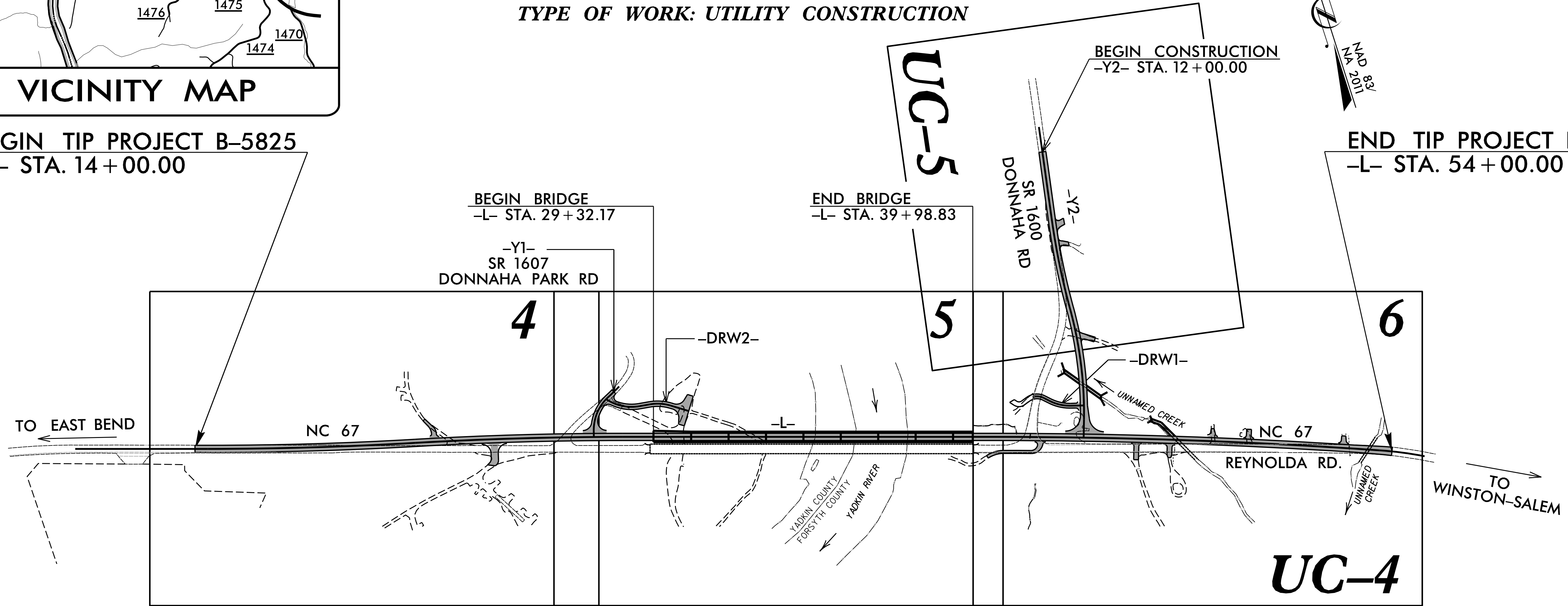
UTILITY CONSTRUCTION PLANS YADKIN & FORSYTH COUNTIES

LOCATION: REPLACE BRIDGE NO. 35 OVER THE
YADKIN RIVER ON NC 67

TYPE OF WORK: UTILITY CONSTRUCTION

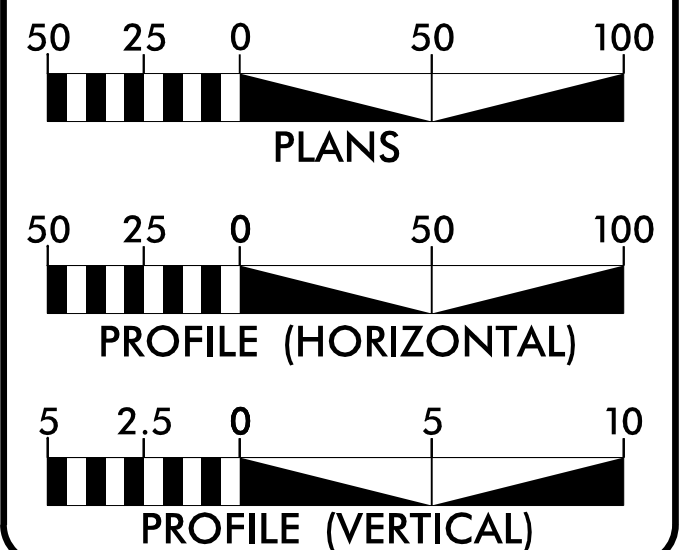
BEGIN TIP PROJECT B-5825
-L- STA. 14 + 00.00

END TIP PROJECT B-5825
-L- STA. 54 + 00.00



DOCUMENT NOT CONSIDERED FINAL
UNLESS ALL SIGNATURES COMPLETED

GRAPHIC SCALES



INDEX OF SHEETS

SHEET NO.:	DESCRIPTION:
UC-1	TITLE SHEET
UC-2	UTILITY SYMBOLOGY
UC-3	NOTES
UC-3A	DETAILS
UC-4 THRU UC-5	UTILITY CONSTRUCTION SHEETS
UC-6	PROFILE SHEET

WATER AND SEWER
OWNERS ON PROJECT

- A) WATER - CITY OF KING
- B) SANITARY SEWER - N/A

PREPARED IN THE OFFICE OF:

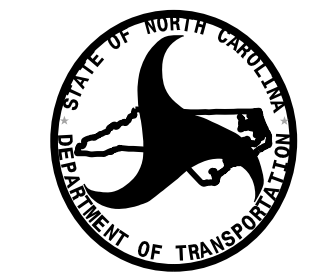
DAVIS • MARTIN • POWELL
ENGINEERS & SURVEYORS

6415 OLD PLANK RD., HIGH POINT, NC 27285
PHONE: (336)886-4821 FAX: (336)886-4458
WWW.DMP-INC.COM LICENSE: F-0245



- Andy Larrick, P.E. CONSULTANT CONTACT #1
- Steve McKee, P.E. CONSULTANT CONTACT #2
- Ralph Lowe CONSULTANT CONTACT #3

SEAL



**DIVISION OF HIGHWAYS
UTILITIES UNIT**
1555 MAIL SERVICES CENTER
RALEIGH, NC 27699-1555
PHONE (919) 707-6690
FAX (919) 250-4151

- BYRON SANDERS, P.E. WESTERN UTILITIES MANAGER
- MICHAEL BRIGHT REGIONAL UTILITIES ENGINEER
- DONALD HAMPTON UTILITIES ENGINEER
- AMY YORK UTILITIES AREA COORDINATOR

\$\$\$\$\$ SYSTEM \$\$\$\$\$\$
\$\$\$\$\$ DGN \$\$\$\$\$\$
\$\$\$\$\$ USER \$\$\$\$\$\$

STATE OF NORTH CAROLINA DIVISION OF HIGHWAYS

UTILITIES PLAN SHEET SYMBOLS

PROPOSED WATER SYMBOLS

Water Line (Sized as Shown)	
11 1/4 Degree Bend	
22 1/2 Degree Bend	
45 Degree Bend	
90 Degree Bend	
Plug	
Tee	
Cross	
Reducer	
Gate Valve	
Butterfly Valve	
Tapping Valve	
Line Stop	
Line Stop with Bypass	
Blow Off	
Fire Hydrant	
Relocate Fire Hydrant	
Remove Fire Hydrant	
Water Meter	
Relocate Water Meter	
Remove Water Meter	
Water Pump Station	
RPZ Backflow Preventer	
DCV Backflow Preventer	
Relocate RPZ Backflow Preventer	
Relocate DCV Backflow Preventer	

PROPOSED SEWER SYMBOLS

Gravity Sewer Line (Sized as Shown)	
Force Main Sewer Line (Sized as Shown)	
Manhole (Sized per Note)	
Sewer Pump Station	

PROPOSED MISCELLANEOUS UTILITIES SYMBOLS

Power Pole	
Telephone Pole	
Joint Use Pole	
Telephone Pedestal	
Utility Line by Others (Type as Shown)	
Trenchless Installation	
Encasement by Open Cut	
Encasement	

Thrust Block	
Air Release Valve	
Utility Vault	
Concrete Pier	
Steel Pier	
Plan Note	
Pay Item Note	

NOTE
PAY ITEM

EXISTING UTILITIES SYMBOLS

Power Pole		*Underground Power Line	
Telephone Pole		*Underground Telephone Cable	
Joint Use Pole		*Underground Telephone Conduit	
Utility Pole		*Underground Fiber Optics Telephone Cable	
Utility Pole with Base		*Underground TV Cable	
H-Frame Pole		*Underground Fiber Optics TV Cable	
Power Transmission Line Tower		*Underground Gas Pipeline	
Water Manhole		Aboveground Gas Pipeline	
Power Manhole		*Underground Water Line	
Telephone Manhole		Aboveground Water Line	
Sanitary Sewer Manhole		*Underground Gravity Sanitary Sewer Line	
Hand Hole for Cable		Aboveground Gravity Sanitary Sewer Line	
Power Transformer		*Underground SS Forced Main Line	
Telephone Pedestal		Underground Unknown Utility Line	
CATV Pedestal		SUE Test Hole	
Gas Valve		Water Meter	
Gas Meter		Water Valve	
Located Miscellaneous Utility Object		Fire Hydrant	
Abandoned According to Utility Records	AATUR	Sanitary Sewer Cleanout	
End of Information	E.O.I.		

*For Existing Utilities
Utility Line Drawn from Record (Type as Shown)
Designated Utility Line (Type as Shown)

5/14/99
REV: 2/1/2012

5/14/99

REVISIONS

UTILITY CONSTRUCTION

GENERAL NOTES:

1. THE PROPOSED UTILITY CONSTRUCTION SHALL MEET THE APPLICABLE REQUIREMENTS OF THE NC DEPARTMENT OF TRANSPORTATION'S "STANDARD SPECIFICATIONS FOR ROADS AND STRUCTURES" DATED JANUARY 2018.
2. THE EXISTING UTILITIES BELONG TO CITY OF KING .
3. ALL WATER LINES TO BE INSTALLED WITHIN COMPLIANCE OF THE RULES AND REGULATIONS OF THE NORTH CAROLINA DEPARTMENT OF ENVIRONMENTAL QUALITY, DIVISION OF WATER RESOURCES, PUBLIC WATER SUPPLY SECTION. PERFORM ALL WORK IN ACCORDANCE WITH THE APPLICABLE PLUMBING CODES.
4. THE UTILITY OWNER OWNS THE EXISTING UTILITY FACILITIES AND WILL OWN THE NEW UTILITY FACILITIES AFTER ACCEPTANCE BY THE DEPARTMENT. THE DEPARTMENT OWNS THE CONSTRUCTION CONTRACT AND HAS ADMINISTRATIVE AUTHORITY. COMMUNICATIONS AND DECISIONS BETWEEN THE CONTRACTOR AND UTILITY OWNER ARE NOT BINDING UPON THE DEPARTMENT OR THIS CONTRACT UNLESS AUTHORIZED BY THE ENGINEER. AGREEMENTS BETWEEN THE UTILITY OWNER AND CONTRACTOR FOR THE WORK THAT IS NOT PART OF THIS CONTRACT OR IS SECONDARY TO THIS CONTRACT ARE ALLOWED, BUT ARE NOT BINDING UPON THE DEPARTMENT.
5. PROVIDE ACCESS FOR THE DEPARTMENT PERSONNEL AND THE OWNER'S REPRESENTATIVES TO ALL PHASES OF CONSTRUCTION. NOTIFY DEPARTMENT PERSONNEL AND THE UTILITY OWNER TWO WEEKS PRIOR TO COMMENCEMENT OF ANY WORK AND ONE WEEK PRIOR TO SERVICE INTERRUPTION. KEEP UTILITY OWNER'S REPRESENTATIVES INFORMED OF WORK PROGRESS AND PROVIDE OPPORTUNITY FOR INSPECTION OF CONSTRUCTION AND TESTING.

6. THE PLANS DEPICT THE BEST AVAILABLE INFORMATION FOR THE LOCATION, SIZE, AND TYPE OF MATERIAL FOR ALL EXISTING UTILITIES. MAKE INVESTIGATIONS FOR DETERMINING THE EXACT LOCATION, SIZE, AND TYPE MATERIAL OF THE EXISTING FACILITIES AS NECESSARY FOR THE CONSTRUCTION OF THE PROPOSED UTILITIES AND FOR AVOIDING DAMAGE TO EXISTING FACILITIES. REPAIR ANY DAMAGE INCURRED TO EXISTING FACILITIES TO THE ORIGINAL OR BETTER CONDITION AT NO ADDITIONAL COST TO THE DEPARTMENT.
7. MAKE FINAL CONNECTIONS OF THE NEW WORK TO THE EXISTING SYSTEM WHERE INDICATED ON THE PLANS, AS REQUIRED TO FIT THE ACTUAL CONDITIONS, OR AS DIRECTED.
8. MAKE CONNECTIONS BETWEEN EXISTING AND PROPOSED UTILITIES AT TIMES MOST CONVENIENT TO THE PUBLIC, WITHOUT ENDANGERING THE UTILITY SERVICE, AND IN ACCORDANCE WITH THE UTILITY OWNER'S REQUIREMENTS. MAKE CONNECTIONS ON WEEKENDS, AT NIGHT, AND ON HOLIDAYS IF NECESSARY. LINE STOPS AND INSERT VAVLES WILL BE REQUIRED WHERE INDICATED ON THE PLANS, WHERE THE UTILITY OWNER CANNOT ISOLATE THE EXISTING LINES WITHOUT MAJOR DISRUPTION OF SERVICE TO MANY USERS.
9. ALL UTILITY MATERIALS SHALL BE APPROVED PRIOR TO DELIVERY TO THE PROJECT. SEE 1500-7, " SUBMITTALS AND RECORDS" IN SECTION 1500 OF THE STANDARD SPECIFICATIONS.

PROJECT SPECIFIC NOTES:

1. UNLESS OTHERWISE NOTED, FOR PROPOSED WATER MAINS AND SEWER MAINS 3" THRU 12" DIAMETER, PIPE SHALL BE DUCTILE IRON, PC 350. PROVIDE RESTRAINED-JOINT DIP WHERE INDICATED ON PROFILES.
2. WATER LINE VALVES SHALL BE RESILIENT-SEAT GATE VALVES CONFORMING TO ANSI/AWWA C509, RATED FOR 200 PSI MINIMUM WORKING PRESSURE.
3. CONTRACTOR'S ATTENTION IS DIRECTED TO SECTIONS 102, 107, AND 1550 OF THE STANDARD SPECIFICATIONS CONCERNING TRENCHLESS INSTALLATION.
4. CONTRACTOR SHALL COORDINATE WITH THE UTILITY OWNER CONCERNING THE TIMING AND SCHEDULE OF REQUIRED SHUT-DOWNS OF ANY EXISTING WATER OR SEWER MAINS.

LIST OF STANDARD DRAWINGS

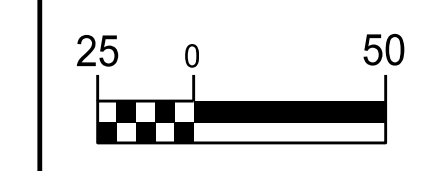
1515.01 WATER METER

PROJECT REFERENCE NO. B-5825	SHEET NO. UC-3
DESIGNED BY: DMP	
DRAWN BY: DMP	
CHECKED BY: DMP	
APPROVED BY:	
REVISED:	
NORTH CAROLINA DEPARTMENT OF TRANSPORTATION	3/27/2020
UTILITIES ENGINEERING SEC. PHONE: (919) 707-6690 FAX: (919) 250-4151	UTILITY CONSTRUCTION PLANS ONLY

UTILITY CONSTRUCTION

DOCUMENT NOT CONSIDERED FINAL UNLESS ALL SIGNATURES COMPLETED

5/14/99



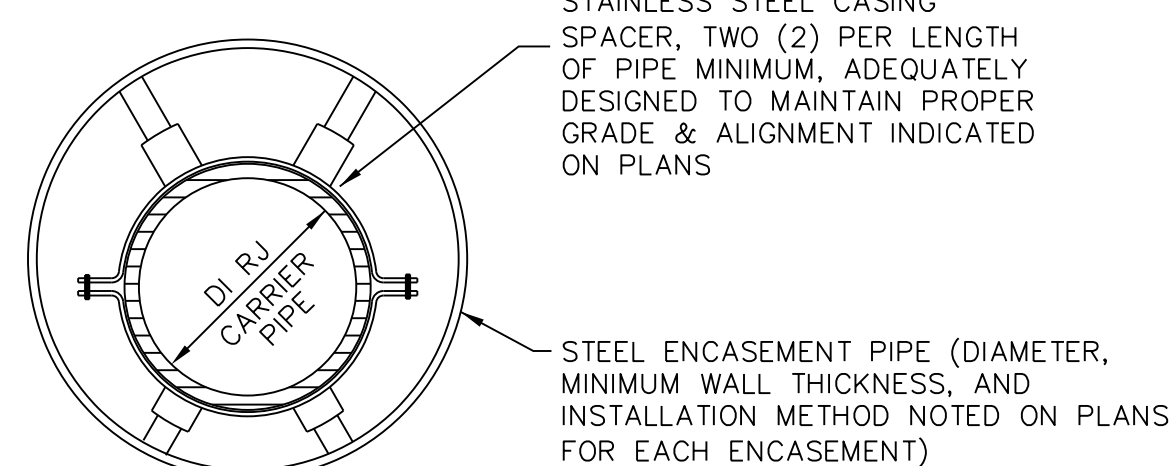
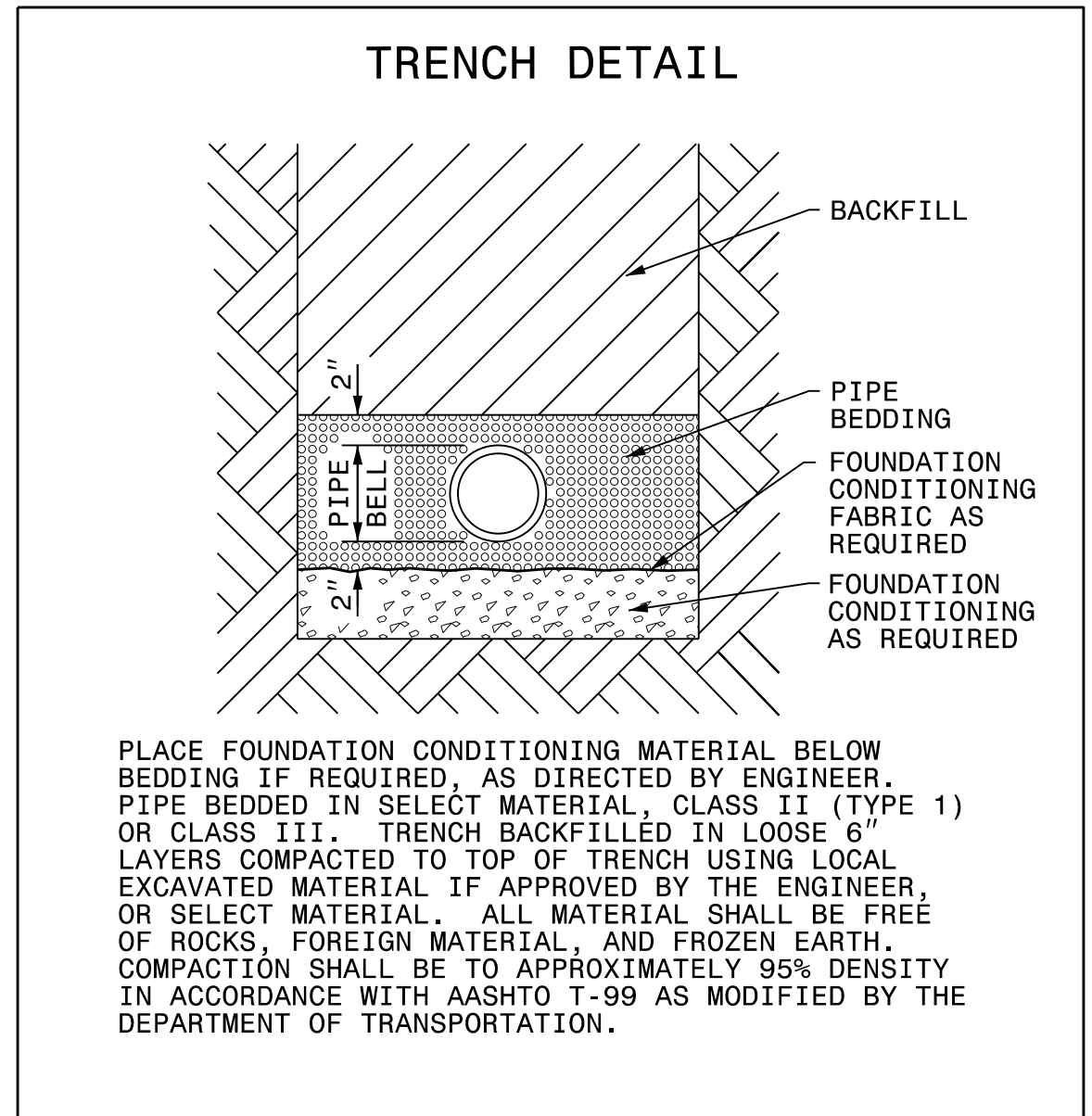
PROJECT REFERENCE NO. B-5825	SHEET NO. UC-3A
DESIGNED BY: DMP	
DRAWN BY: DMP	
CHECKED BY: DMP	
APPROVED BY:	
REVISED:	
NORTH CAROLINA DEPARTMENT OF TRANSPORTATION	3/27/2020
UTILITIES ENGINEERING SEC. PHONE: (919) 707-6690 FAX: (919) 250-4151	UTILITY CONSTRUCTION PLANS ONLY

PROJECT TYPICAL DETAILS

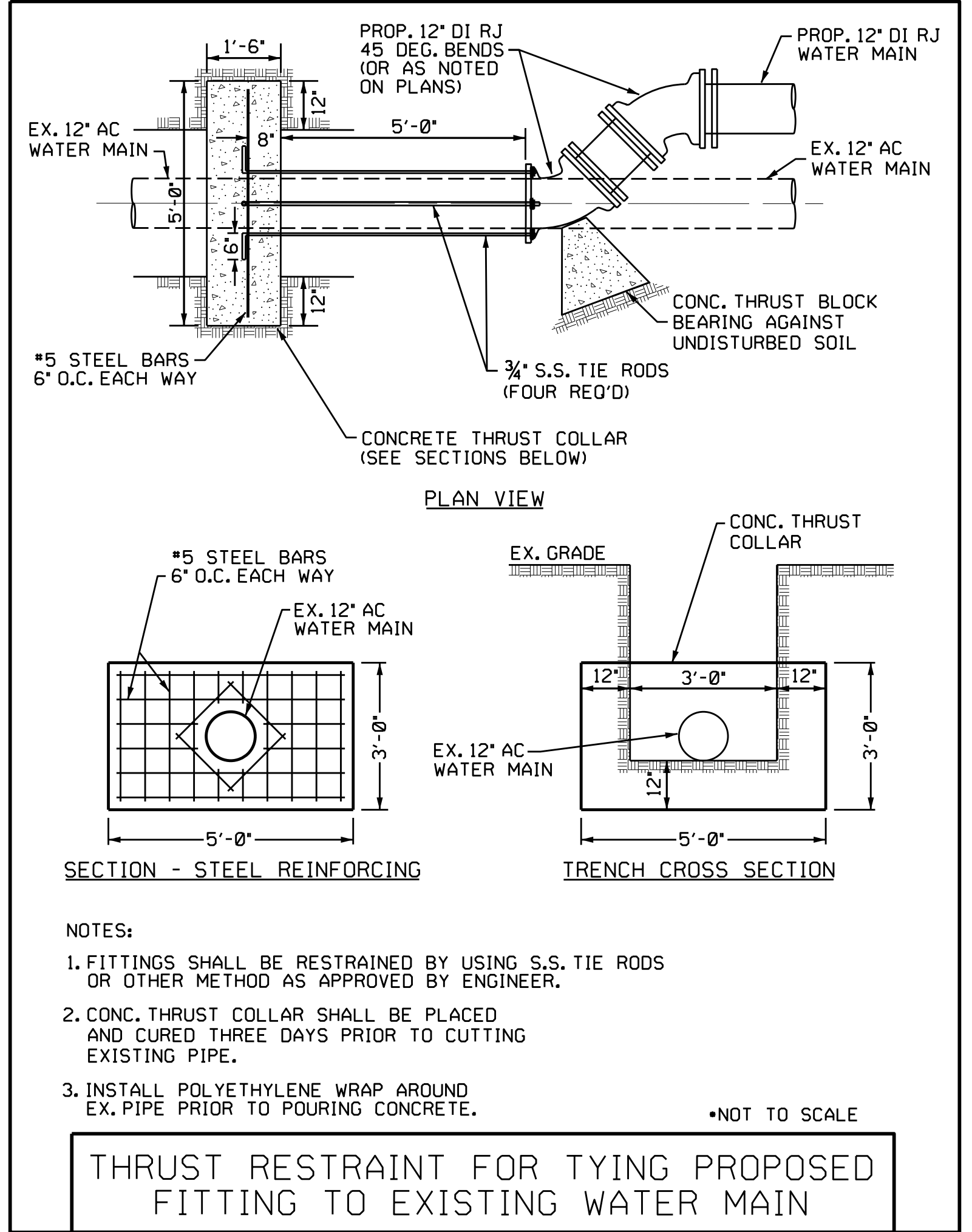
UTILITY CONSTRUCTION

**DOCUMENT NOT CONSIDERED FINAL
UNLESS ALL SIGNATURES COMPLETED**

NOMINAL PIPE SIZE (INCHES)	TRENCH WIDTH (INCHES)	NOMINAL PIPE SIZE (INCHES)	TRENCH WIDTH (INCHES)
4	28	20	44
6	30	24	48
8	32	30	54
10	34	36	60
12	36	42	66
14	38	48	72
16	40	54	78
18	42		



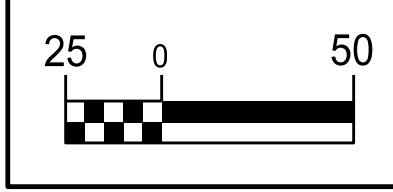
- NOTES:
1. ENCLOSE ENDS WITH BRICK MASONRY.
 2. PROVIDE 1" WEEP HOLE AT LOW END OF ENCASEMENT.



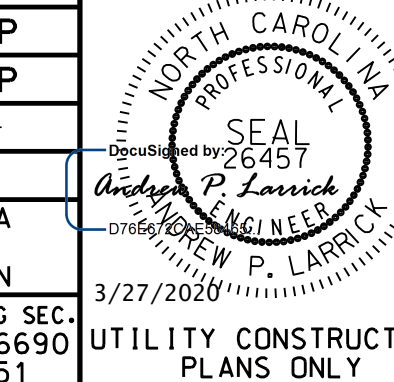
REVISIONS

66
65
64
63
62
61
60
59
58
57
56
55
54
53
52
51
50
49
48
47
46
45
44
43
42
41
40
39
38
37
36
35
34
33
32
31
30
29
28
27
26
25
24
23
22
21
20
19
18
17
16
15
14
13
12
11
10
9
8
7
6
5
4
3
2
1

MATCHLINE -Y2- STA. 17+00.00 SEE SHEET UC-5

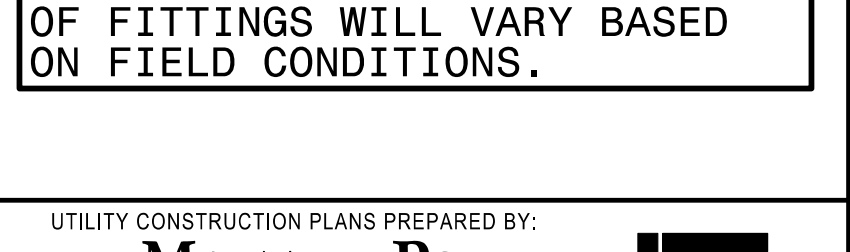
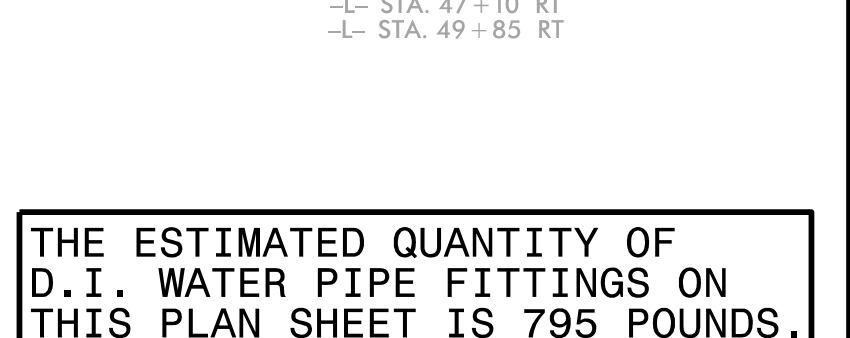
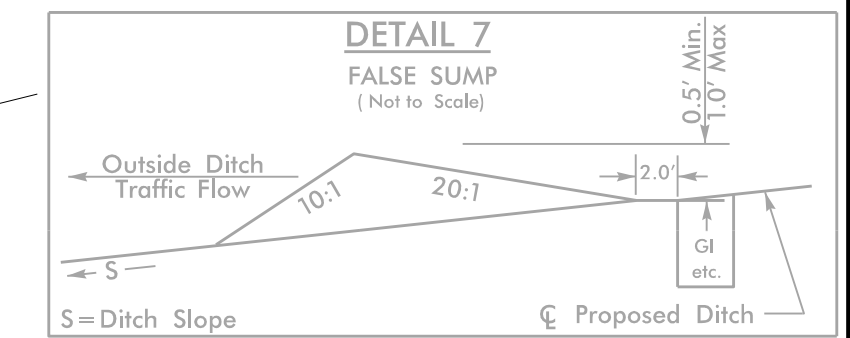
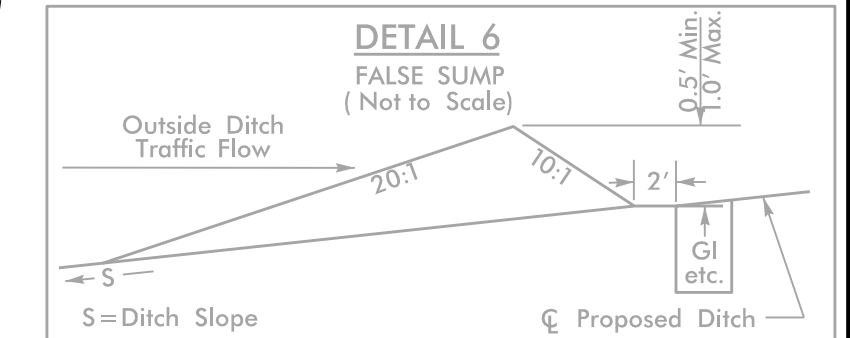


PROJECT REFERENCE NO.	SHEET NO.
B-5825	UC-4
DESIGNED BY: DMP	
DRAWN BY: DMP	
CHECKED BY: DMP	
APPROVED BY:	
REVISER:	
NORTH CAROLINA DEPARTMENT OF TRANSPORTATION	UTILITY CONSTRUCTION PLANS ONLY
UTILITIES ENGINEERING SEC. PHONE: (919) 707-6690 FAX: (919) 250-4151	3/27/2020



UTILITY CONSTRUCTION
DOCUMENT NOT CONSIDERED FINAL UNLESS ALL SIGNATURES COMPLETED

END TIP PROJECT B-5825
-L- POC Sta. 54+00.00



THE ESTIMATED QUANTITY OF D.I. WATER PIPE FITTINGS ON THIS PLAN SHEET IS 795 POUNDS. THE ACTUAL QUANTITY AND TYPE OF FITTINGS WILL VARY BASED ON FIELD CONDITIONS.

-Y2-
 PI Sta 15+83.03 Δ = 7' 18" 25.5" (RT) D = 2' 27" 32.6" L = 297.15' T = 148.78' R = 2,330.00' SE = 0.05 Lr = 150'
 PI Sta 19+20.49 Δ = 16' 10" 59.2" (RT) D = 4' 18" 28.6" L = 375.66' T = 189.09' R = 1,330.00' SE = 0.06 Lr = 180'

-DRWI-
 PI Sta 10+20.16 Δ = 43' 54" 40.0" (RT) D = 114' 35" 29.6" T = 20.16' R = 50.00' SE = SEE PLANS
 PI Sta 10+97.20 Δ = 28' 04" 21.9" (LT) D = 38' 11" 49.9" L = 73.49' T = 37.50' R = 150.00' SE = SEE PLANS

-L-
 PI Sta 47+14.26 Δ = 3' 59" 20.3" (RT) D = 0' 18" 34.9" L = 1,287.98' T = 644.25' R = 18,500.00' SE = NC
 PI Sta 54+34.32 Δ = 6' 59" 19.1" (RT) D = 4' 35" 01.2" L = 152.47' T = 76.33' R = 2,250.00' SE = SEE PLANS

-DRWI- PT Sta. 11+33.19
 -DRWI- PC Sta. 10+59.70
 -DRWI- PT Sta. 10+38.32
 -DRWI- PC Sta. 10+00.00

ABANDON 223 LF 12" UTIL. PIPE, 1 - REMOVE WM
 PROP. 16' SOIL DRIVE

PROP. - 100 L.F. OF 24" ENCASMENT PIPE (MIN. W.T.=0.250"), 40 L.F. OF BORE AND JACK OF 24"

-L- POC Sta. 43+69.13 = -Y2- POT Sta. 21+67.68

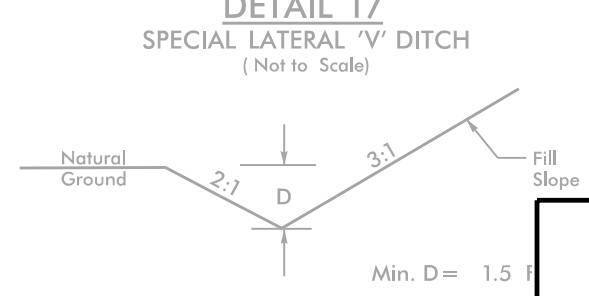
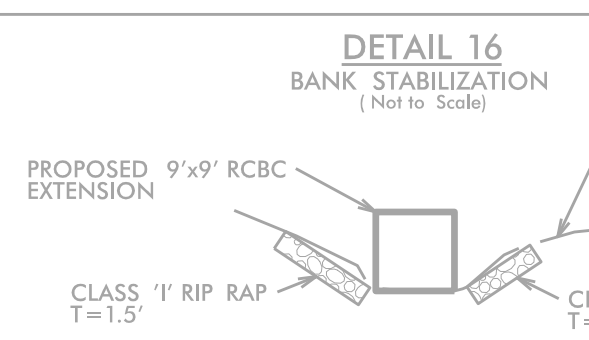
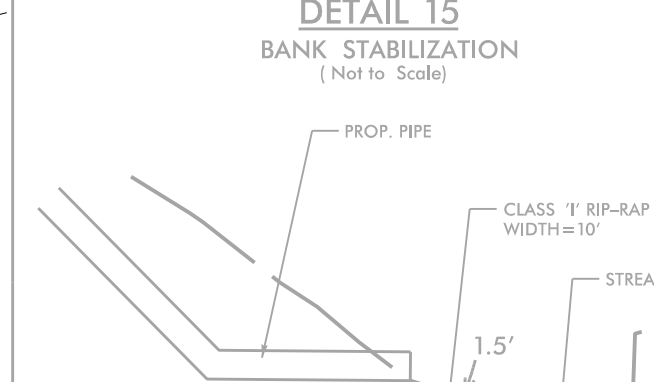
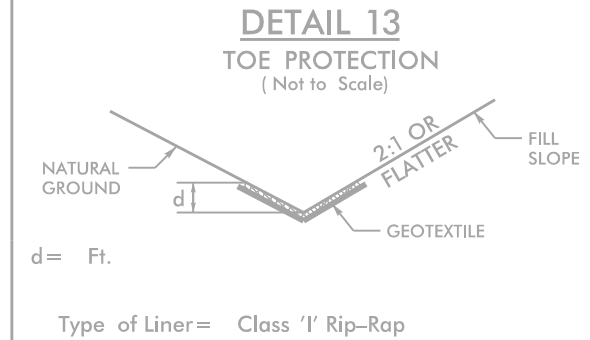
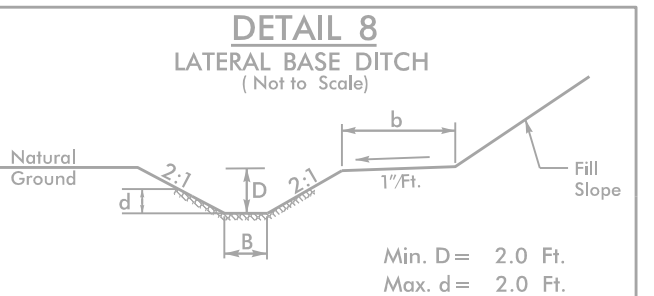
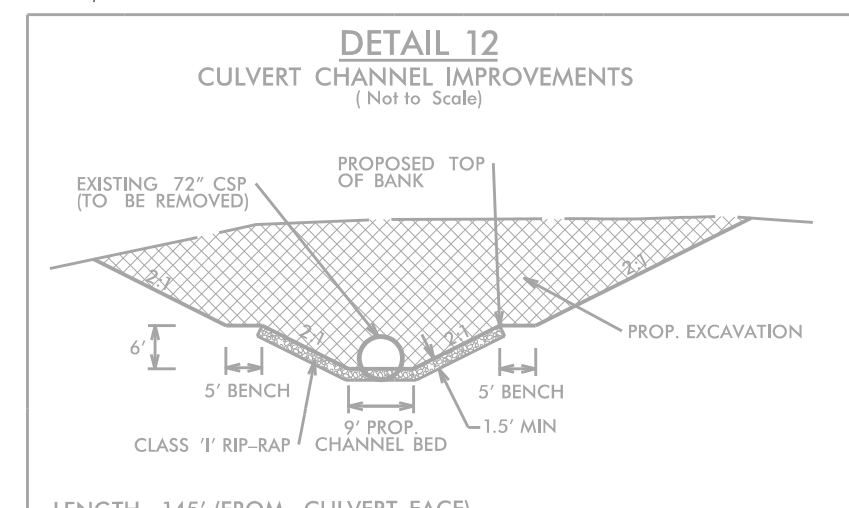
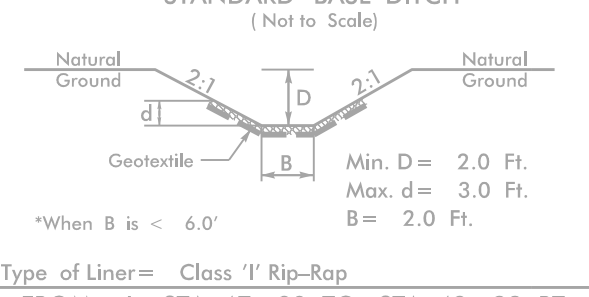
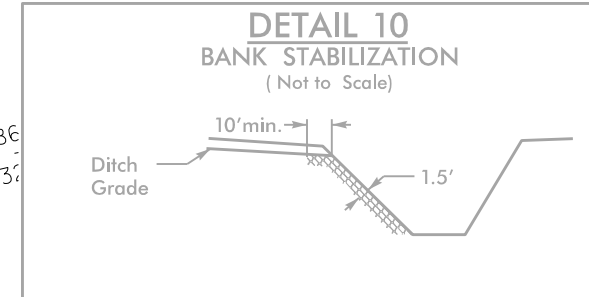
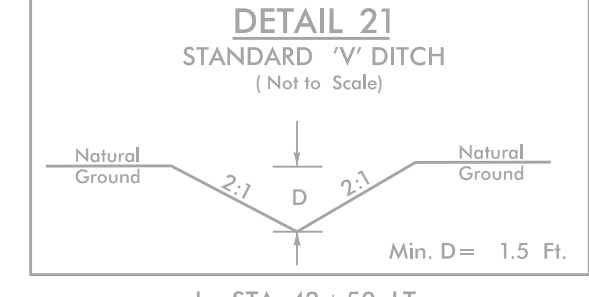
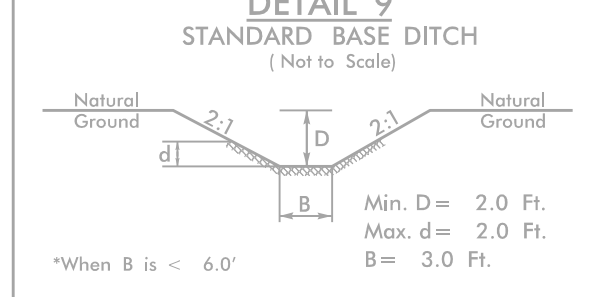
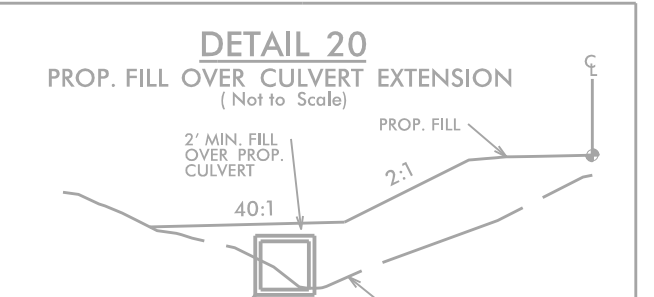
PROP. - 1,255 L.F. OF 12" WATER LINE (PW100, SEE UC-6 FOR PROFILE)

PROP. - 1 - RELOCATE WATER METER, 94 L.F. OF WATER SERVICE LINE

PROP. - 1 12" VALVE

PROP. - 1 - 2" VALVE, 40 L.F. OF 2" WATER LINE

PROP. - 1 - RECONNECT WATER METER, 31 L.F. OF WATER SERVICE LINE



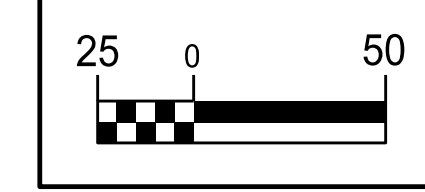
REVISIONS
5/14/19

5/14/99

REVISIONS

-Y2-

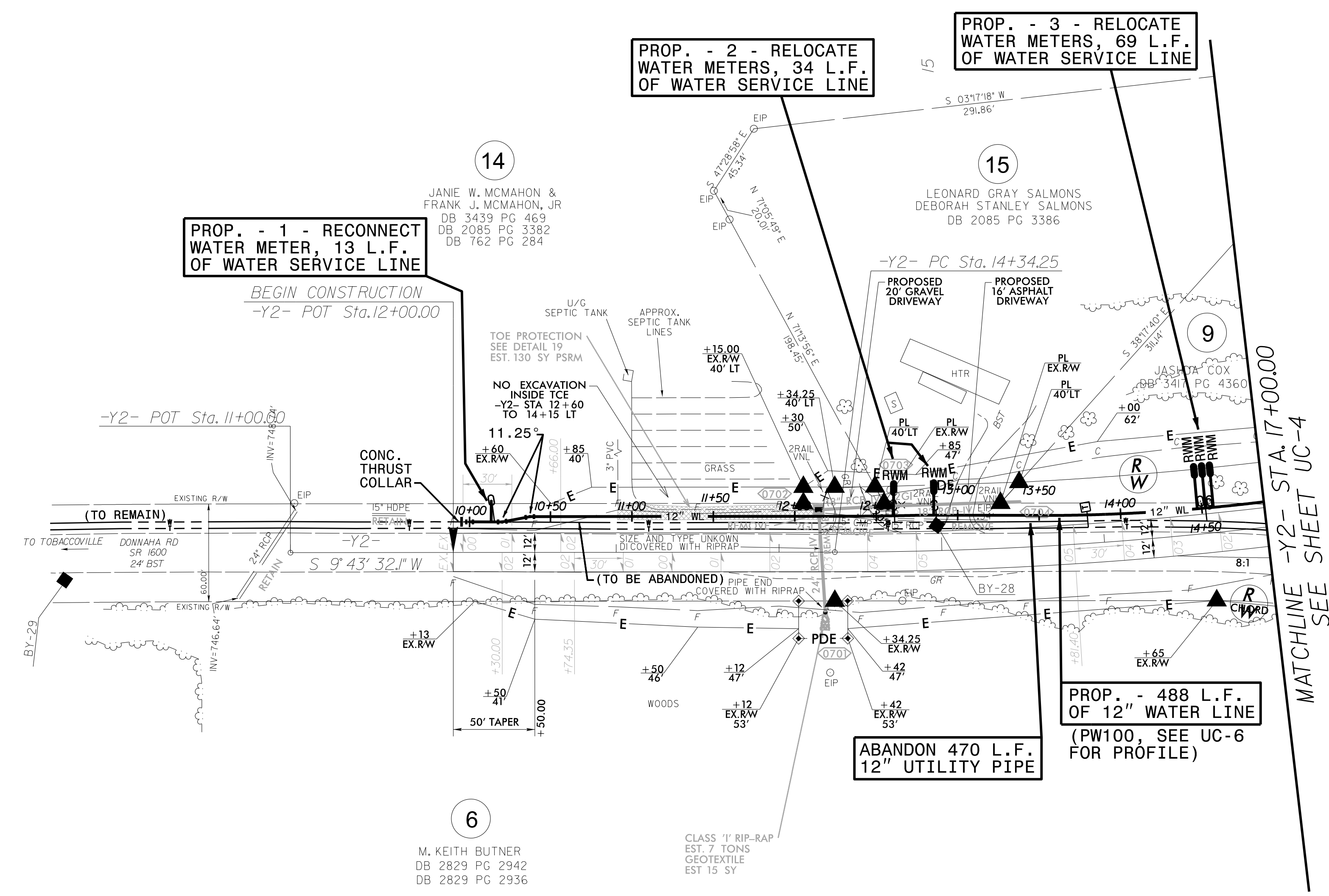
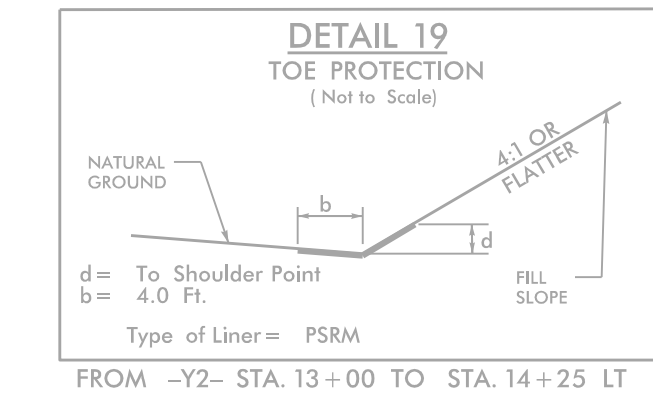
PI Sta 15+83.03
 $\Delta = 7' 18" 25.5" (LT)$
 $D = 2' 27" 32.6"$
 $L = 297.15'$
 $T = 148.78'$
 $R = 2,330.00'$
 $SE = 0.05$
 $Lr = 150'$



PROJECT REFERENCE NO. B-5825	SHEET NO. UC-5
DESIGNED BY: DMP	
DRAWN BY: DMP	
CHECKED BY: DMP	
APPROVED BY:	
REVISED:	
NORTH CAROLINA DEPARTMENT OF TRANSPORTATION	3/27/2020
UTILITIES ENGINEERING SEC. PHONE: (919) 707-6690 FAX: (919) 250-4151	UTILITY CONSTRUCTION PLANS ONLY

UTILITY CONSTRUCTION

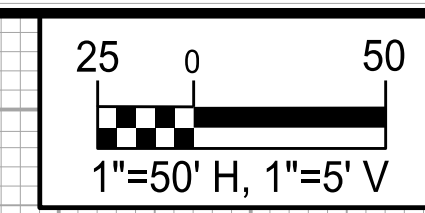
DOCUMENT NOT CONSIDERED FINAL UNLESS ALL SIGNATURES COMPLETED



THE ESTIMATED QUANTITY OF D.I. WATER PIPE FITTINGS ON THIS PLAN SHEET IS 585 POUNDS. THE ACTUAL QUANTITY AND TYPE OF FITTINGS WILL VARY BASED ON FIELD CONDITIONS.

66
65
64
63
62
61
60
59
58
57
56
55
54
53
52
51
50
49
48
47
46
45
44
43
42
41
40
39
38
37
36
35
34
33
32
31
30
29
28
27
26
25
24
23
22
21
20
19
18
17
16
15
14
13
12
11
10
9
8
7
6
5
4
3
2
1

5/14/99

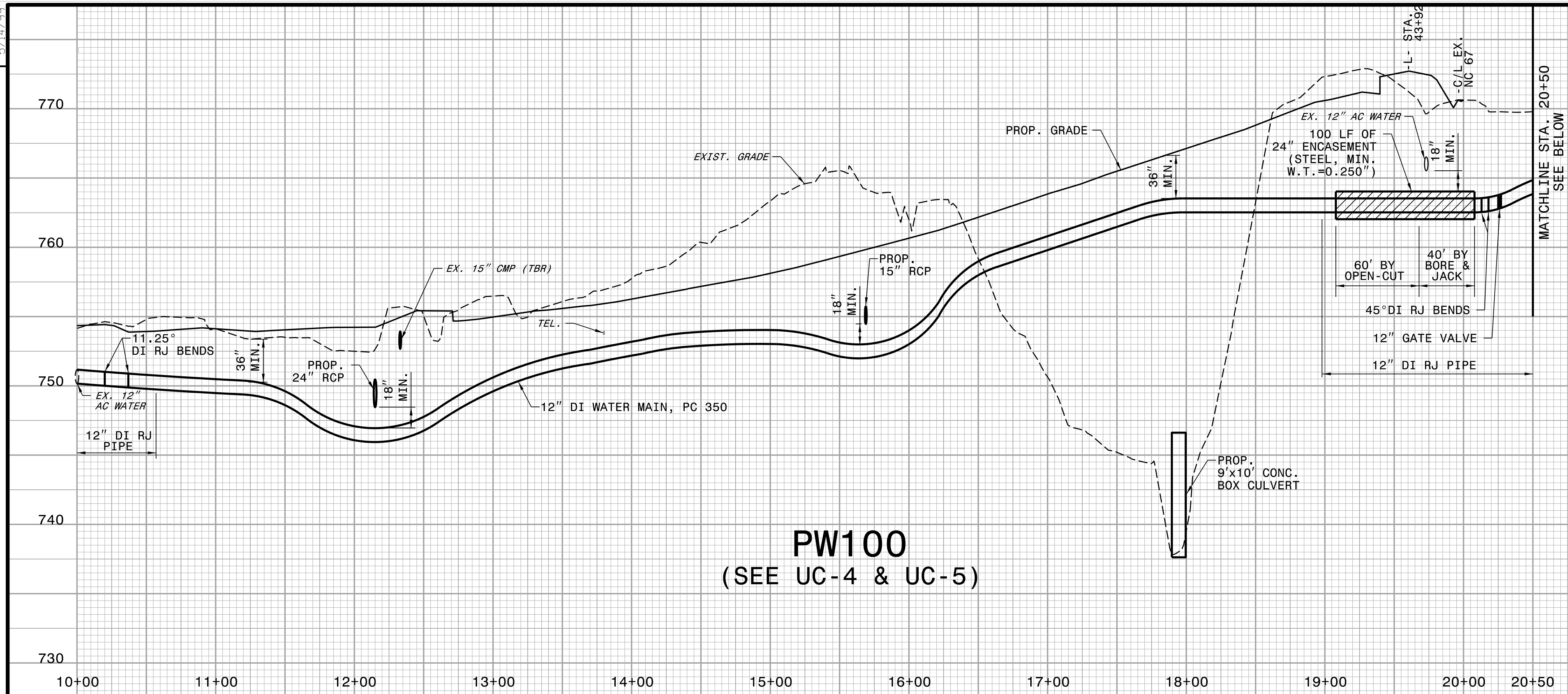


PROJECT REFERENCE NO. B-5825	SHEET NO. UC-6
DESIGNED BY: DMP	
DRAWN BY: DMP	
CHECKED BY: DMP	
APPROVED BY:	
REVISED:	
NORTH CAROLINA DEPARTMENT OF TRANSPORTATION UTILITIES ENGINEERING SEC. PHONE: (919) 707-6690 FAX: (919) 250-4151	
UTILITY CONSTRUCTION PLANS ONLY	

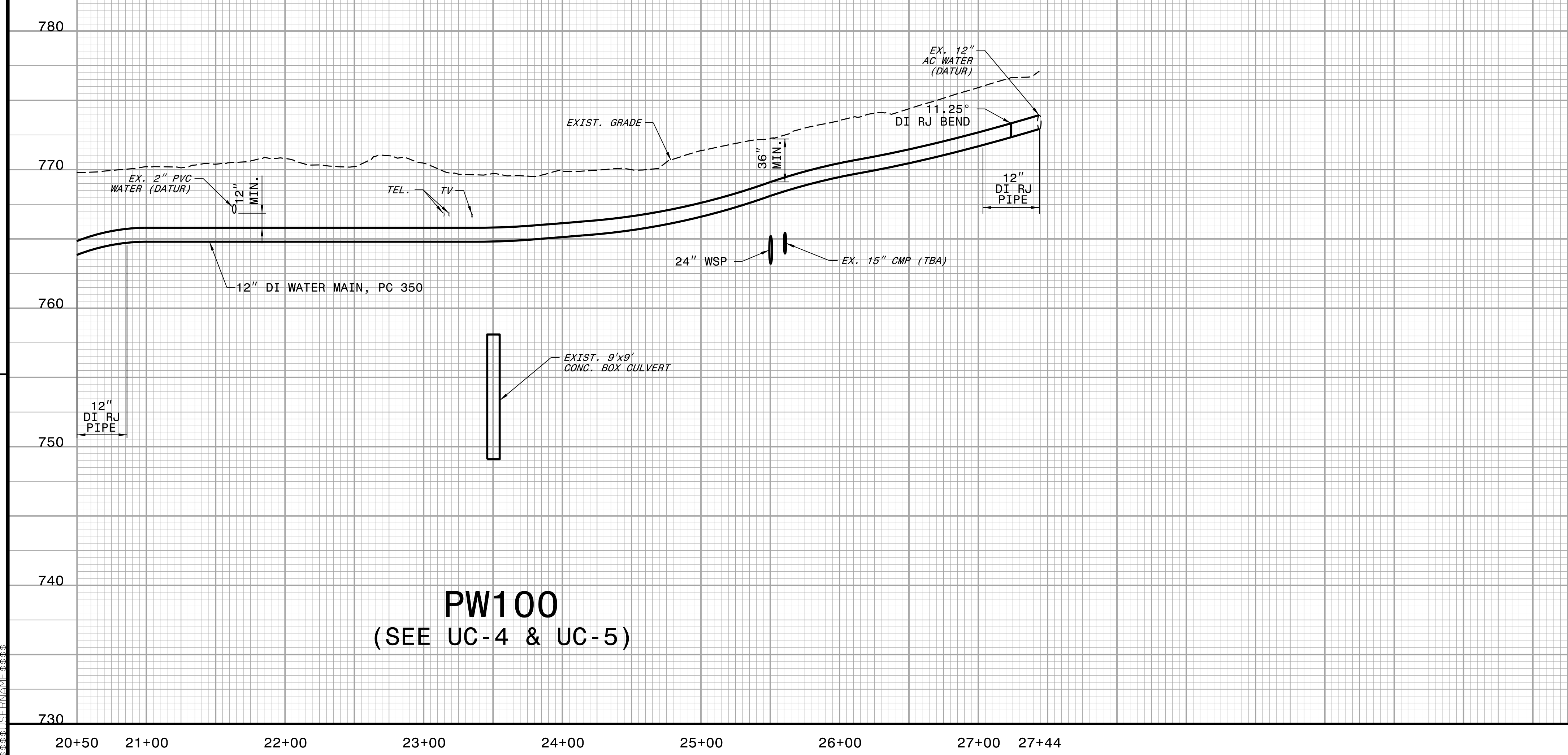
UTILITY CONSTRUCTION

DOCUMENT NOT CONSIDERED FINAL
UNLESS ALL SIGNATURES COMPLETED

REVISIONS



PW100
(SEE UC-4 & UC-5)



PW100
(SEE UC-4 & UC-5)