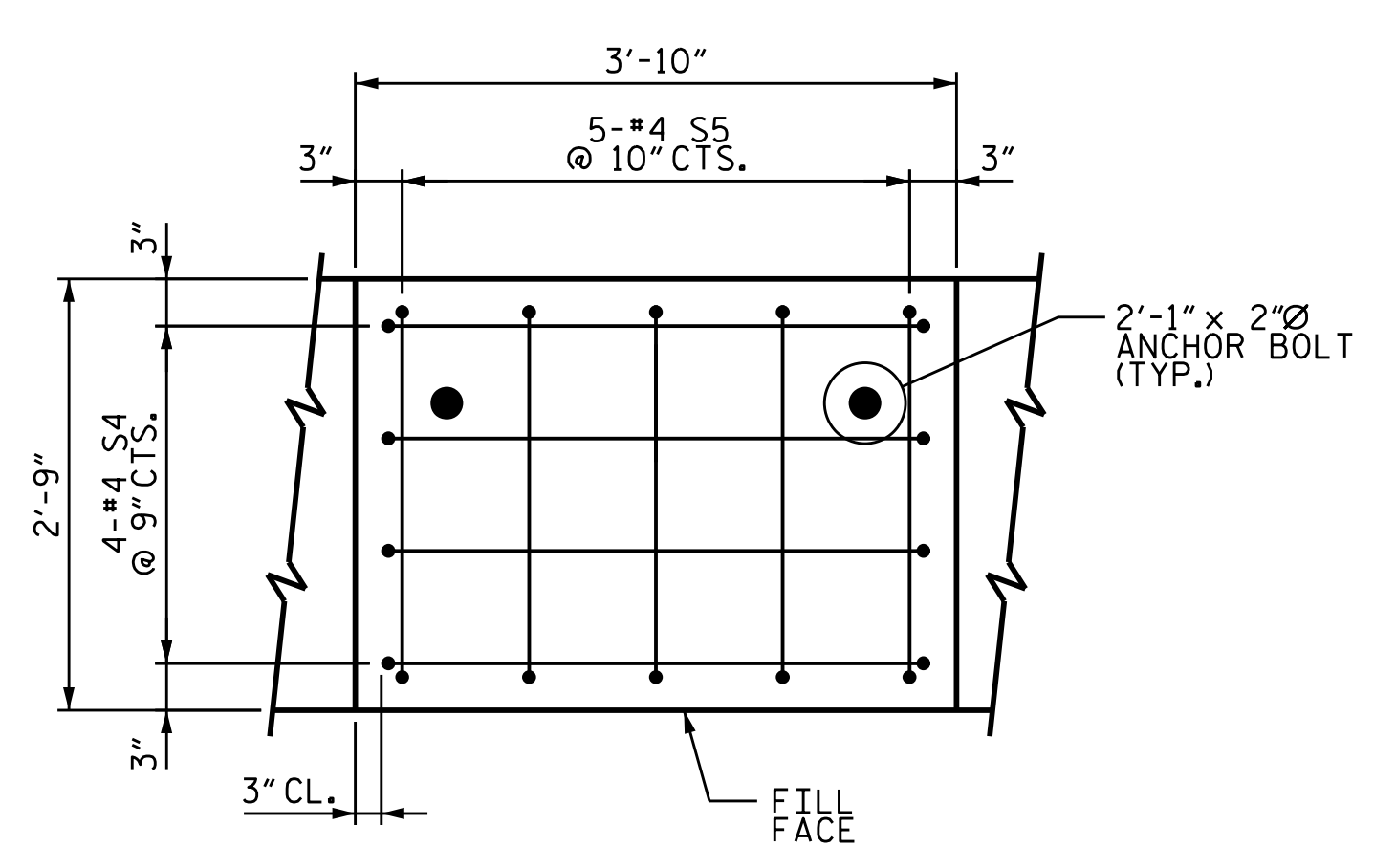


BAGGED STONE AND PIPE SHALL BE PLACED IMMEDIATELY AFTER COMPLETION OF END BENT EXCAVATION. PIPE MAY BE EITHER CONCRETE, CORRUGATED STEEL, CORRUGATED ALUMINUM ALLOY, OR CORRUGATED PLASTIC. PERFORATED PIPE WILL NOT BE ALLOWED.

BAGGED STONE SHALL REMAIN IN PLACE UNTIL THE ENGINEER DIRECTS THAT IT BE REMOVED. THE CONTRACTOR SHALL REMOVE AND DISPOSE OF SILT ACCUMULATIONS AT BAGGED STONE WHEN SO DIRECTED BY THE ENGINEER. BAGS SHALL BE REMOVED AND REPLACED WHENEVER THE ENGINEER DETERMINES THAT THEY HAVE DETERIORATED AND LOST THEIR EFFECTIVENESS.

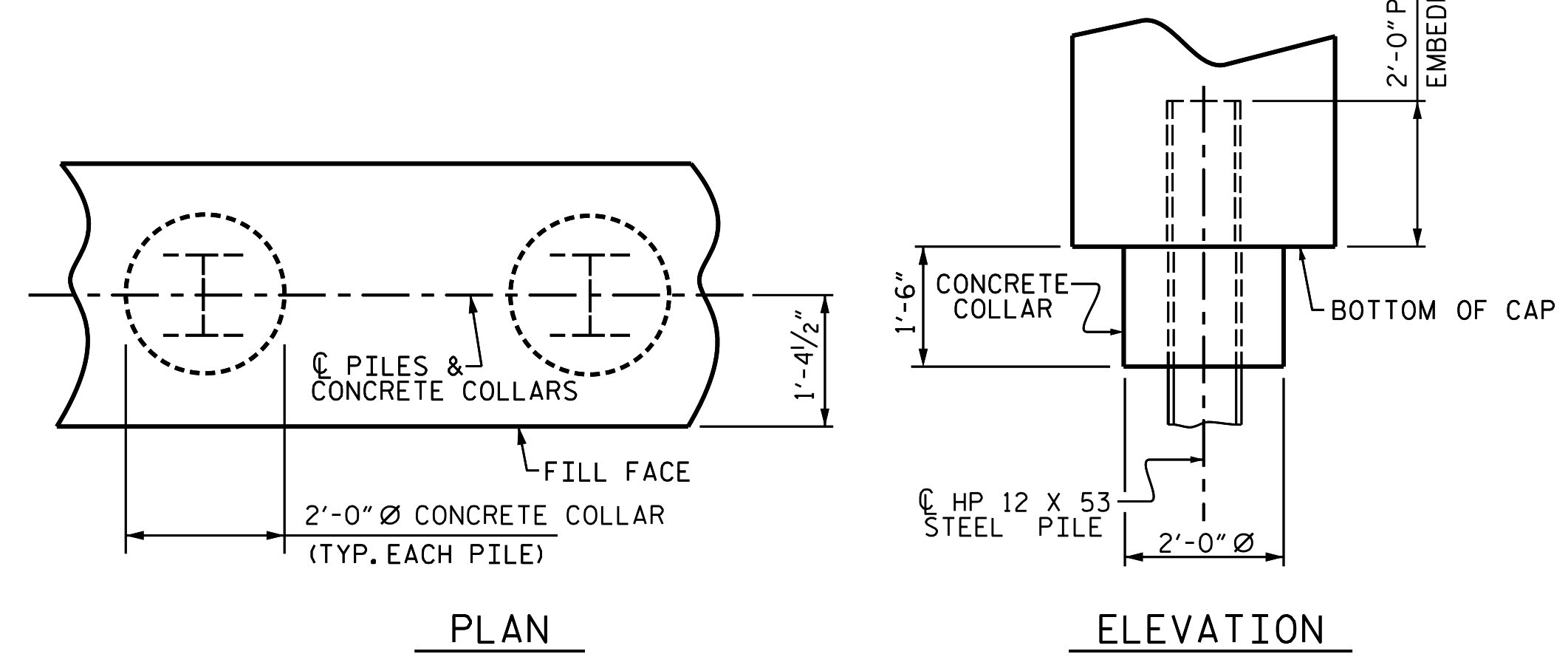
NO SEPARATE PAYMENT WILL BE MADE FOR THIS WORK AND THE ENTIRE COST OF THIS WORK SHALL BE INCLUDED IN THE UNIT CONTRACT PRICE BID FOR THE SEVERAL PAY ITEMS.

TEMPORARY DRAINAGE AT END BENT

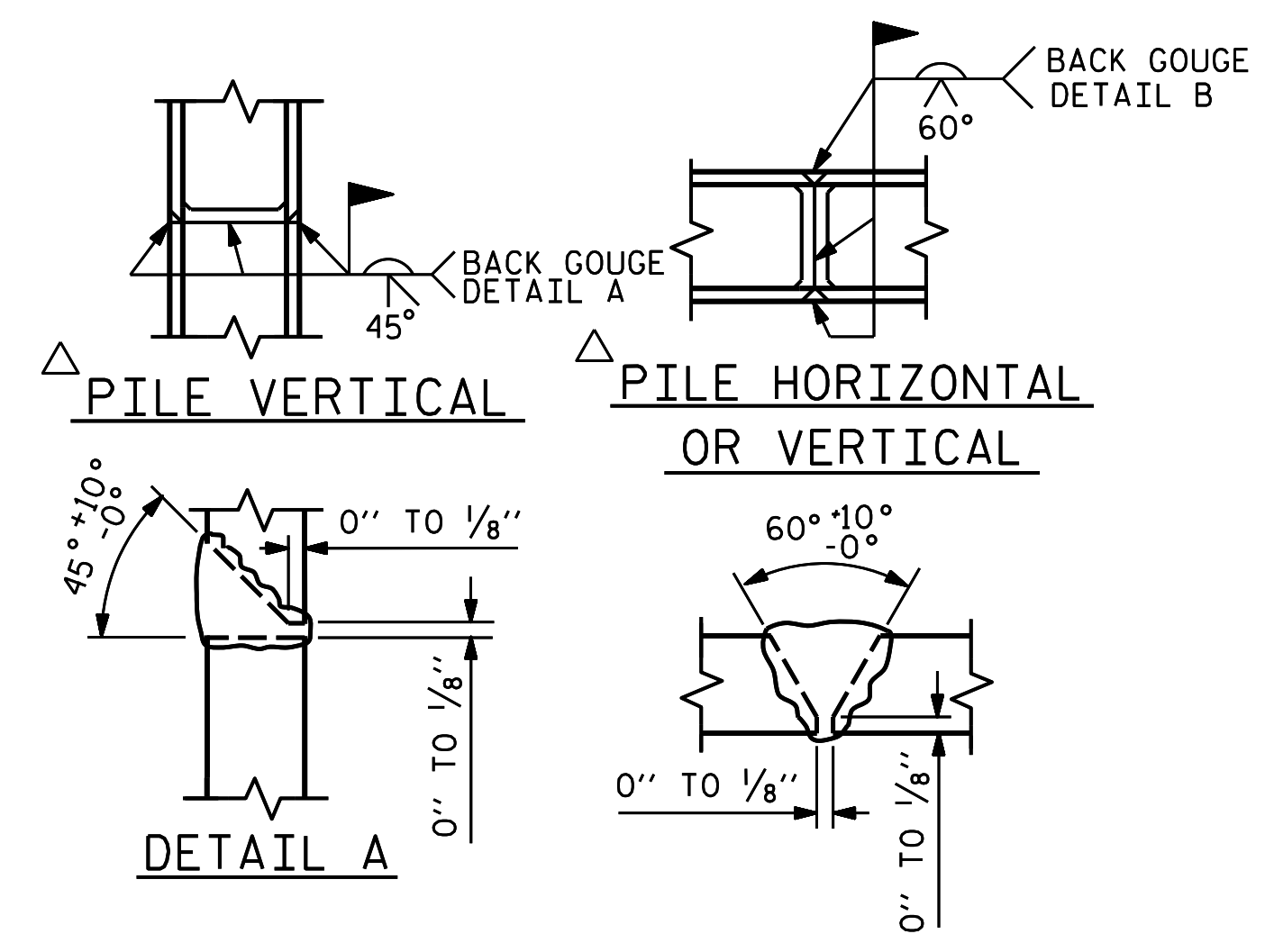


BRIDGE SEAT REINFORCING DETAIL

(TYPICAL FOR GIRDERS 2 AND 3 SEATS)

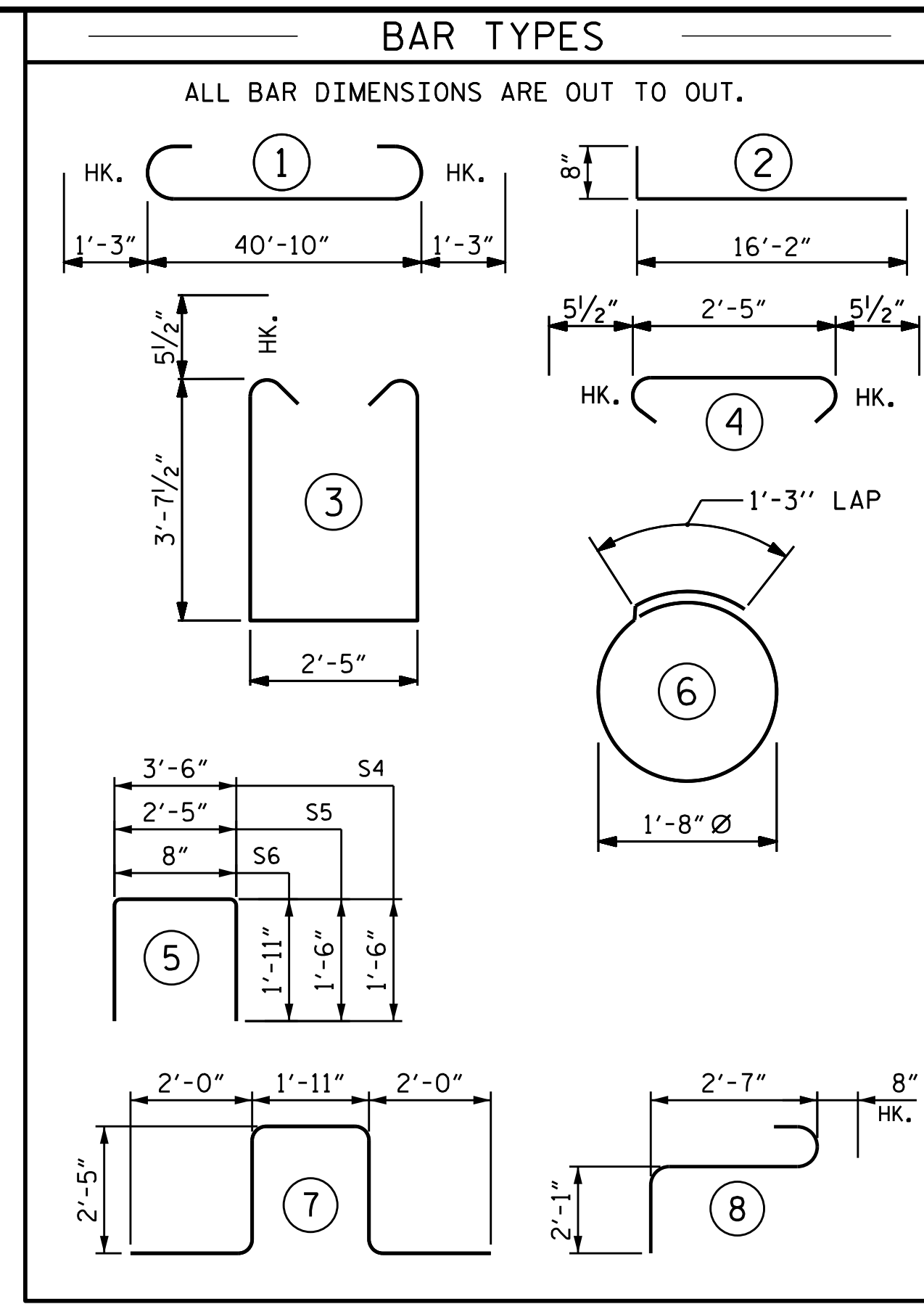
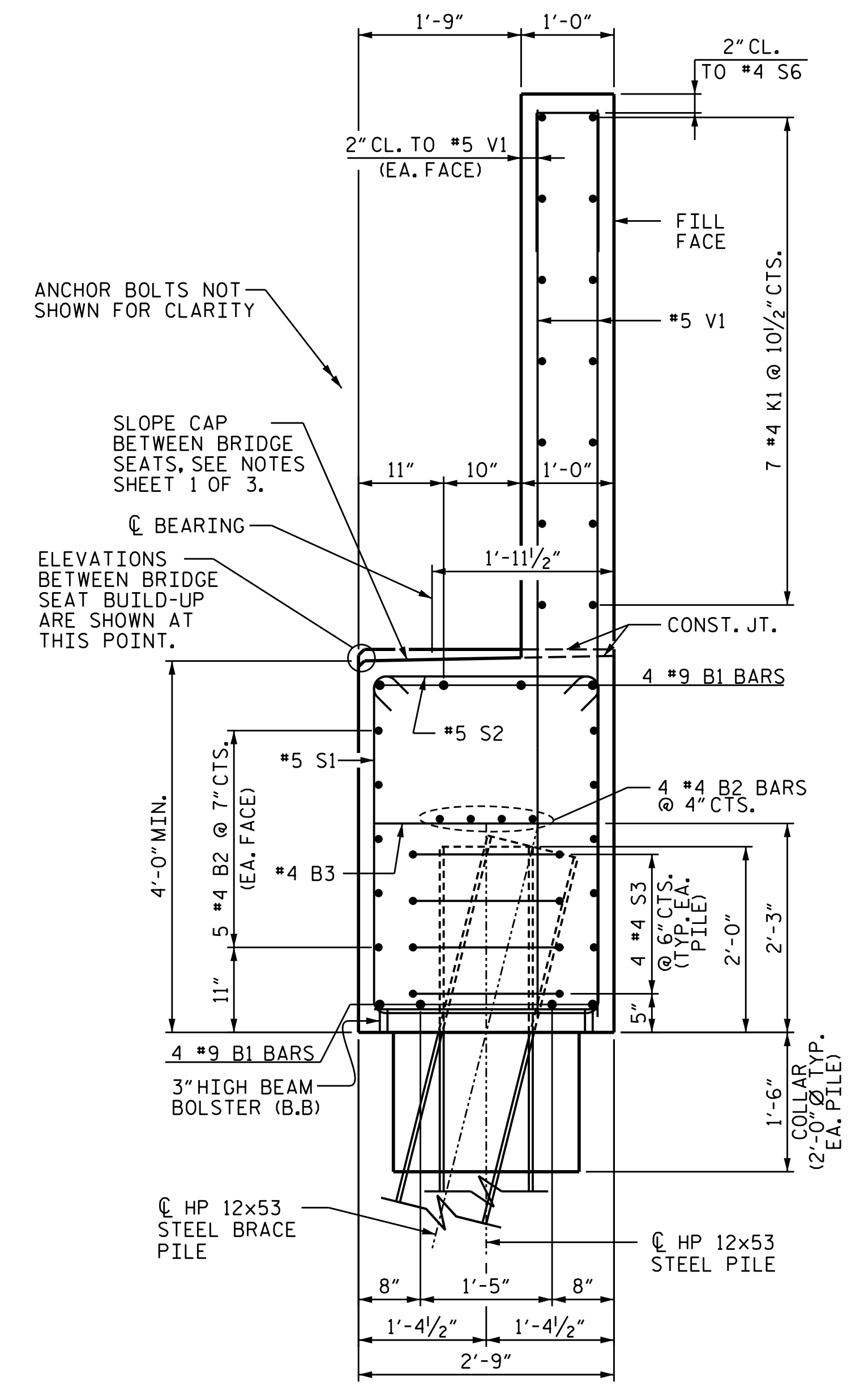


CORROSION PROTECTION FOR STEEL PILES DETAIL



POSITION OF PILE DURING WELDING.

PILE SPLICE DETAILS



BILL OF MATERIAL					
END BENT 2					
BAR NO.	SIZE	TYPE	LENGTH	WEIGHT	
B1	#8		43'-4"	1,179	
B2	#28	#4 STR	21'-9"	407	
B3	#11	#4 STR	2'-5"	18	
H1	#56	#4	2	16'-10"	630
K1	#28	#4 STR.	21'-9"	407	
K2	#8	#4 STR	3'-7"	19	
S1	#46	#5	3	10'-7"	508
S2	#46	#5	4	3'-4"	160
S3	#28	#4	6	6'-6"	122
S4	#8	#4	5	6'-6"	35
S5	#10	#4	5	5'-5"	36
S6	#34	#4	5	4'-6"	102
S7	#6	#6	7	10'-9"	97
S8	#6	#6	8	5'-4"	48
V1	#68	#5 STR.	9'-8"	686	
V2	#84	#5 STR.	11'-4"	993	
REINFORCING STEEL				5,447	LBS.
CLASS A CONCRETE BREAKDOWN					
POUR #1 CAP, LOWER PART OF WINGS & COLLARS				24.3	C.Y.
POUR #2 BACKWALL AND UPPER PART OF WINGS				18.7	C.Y.
TOTAL CLASS A CONCRETE				43.0	C.Y.
HP 12 X 53 STEEL PILES					
NO: 9		LIN. FT. = 340			
PILE DRIVING EQUIPMENT SETUP FOR HP 12 X 53 STEEL PILES					
EACH = 9					

PROJECT NO. B-5825
 YADKIN/FORSYTH COUNTY
 STATION: 34+65.50-L-
 SHEET 3 OF 3

STATE OF NORTH CAROLINA
 DEPARTMENT OF TRANSPORTATION
 RALEIGH

END BENT No. 2
 DETAILS

4/14/2020

DOCUMENT NOT CONSIDERED FINAL UNLESS ALL SIGNATURES COMPLETED

ICGS ENGINEERS
 804-C N. LAFAYETTE ST
 SHELBY, NC 28150
 PH (704) 476-0003
 CORP. LICENSE NO.: C-0275

REVISIONS						SHEET NO.
NO.	BY:	DATE:	NO.	BY:	DATE:	S-57
1			3			TOTAL SHEETS 60
2			4			

DRAWN BY: JLA DATE: 11/19
 CHECKED BY: RAR DATE: 12/19
 DESIGN ENGINEER OF RECORD: TBE DATE: 2/20