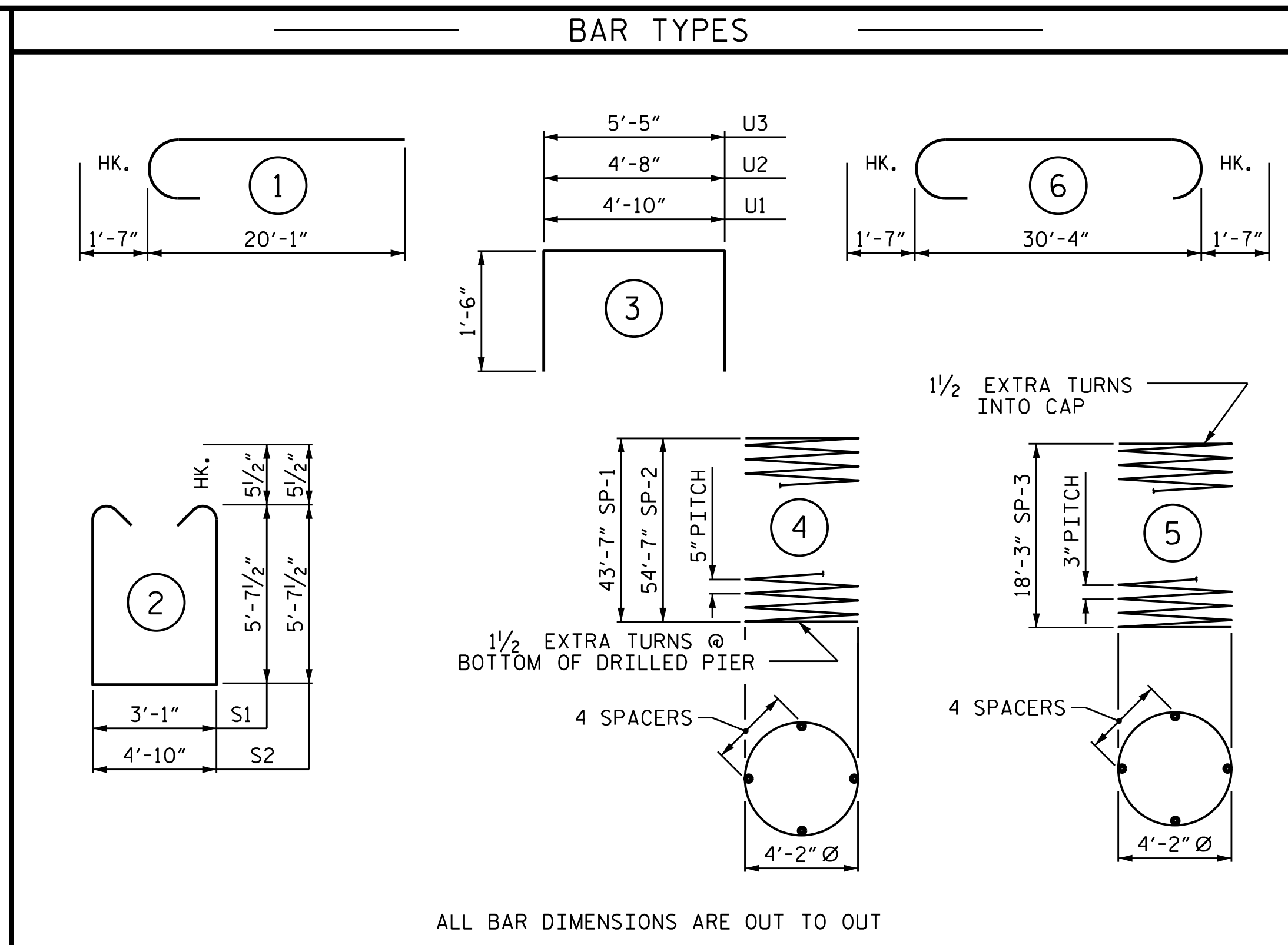


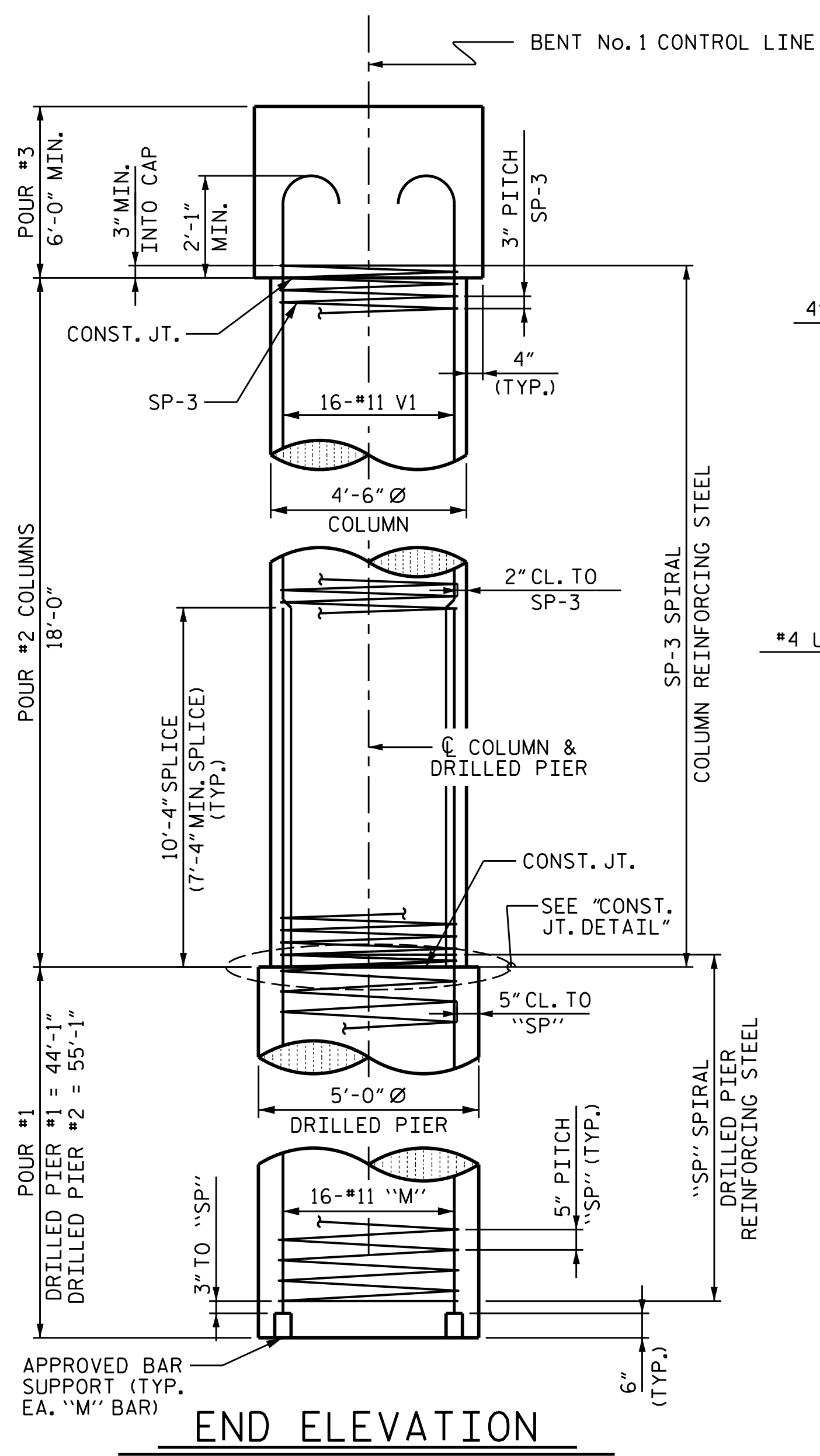
PLAN OF DRILLED PIERS & COLUMNS

DIMENSIONS AND REINFORCING STEEL ARE TYPICAL FOR EACH COLUMN & DRILLED PIER.

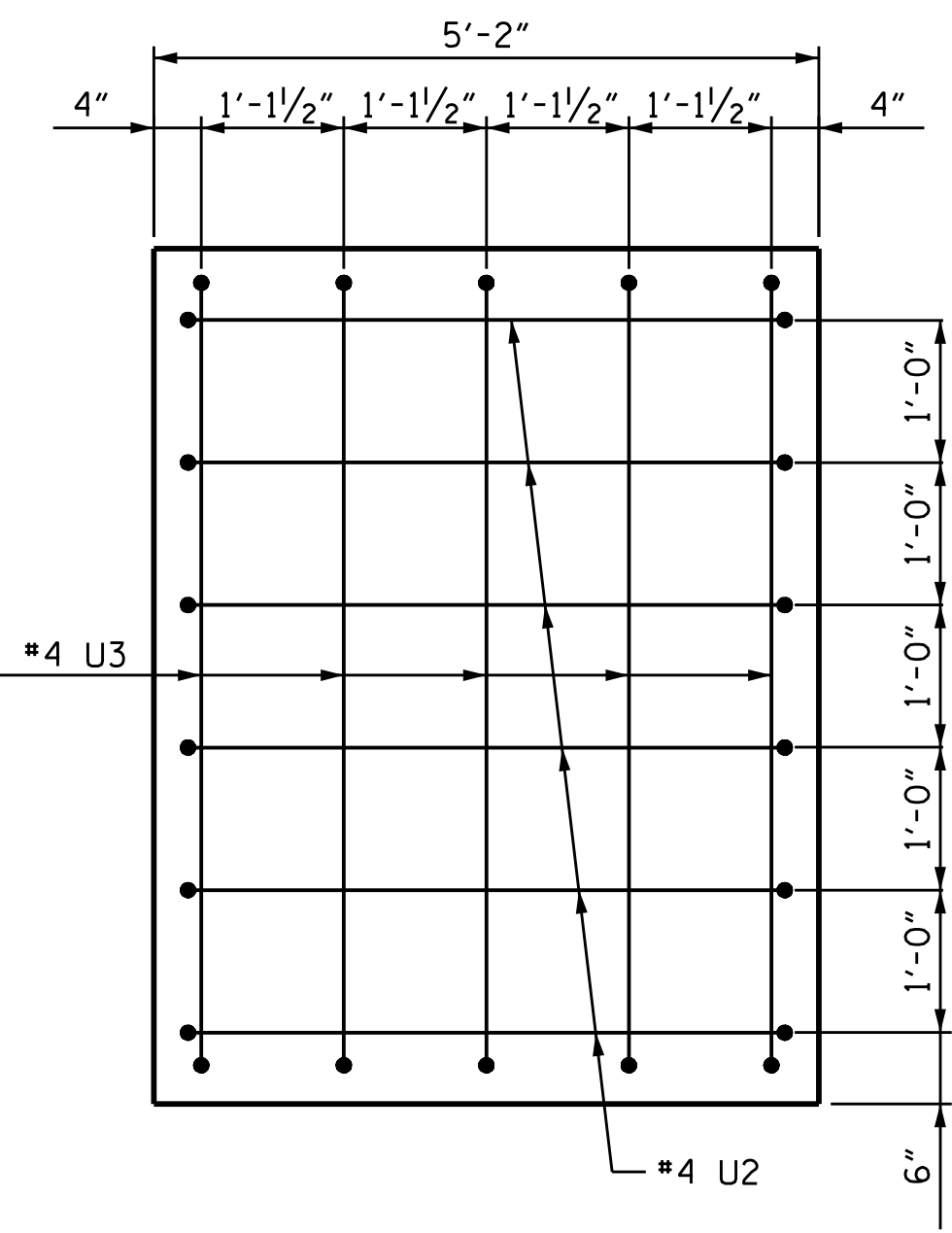


BILL OF MATERIAL FOR BENT No. 1

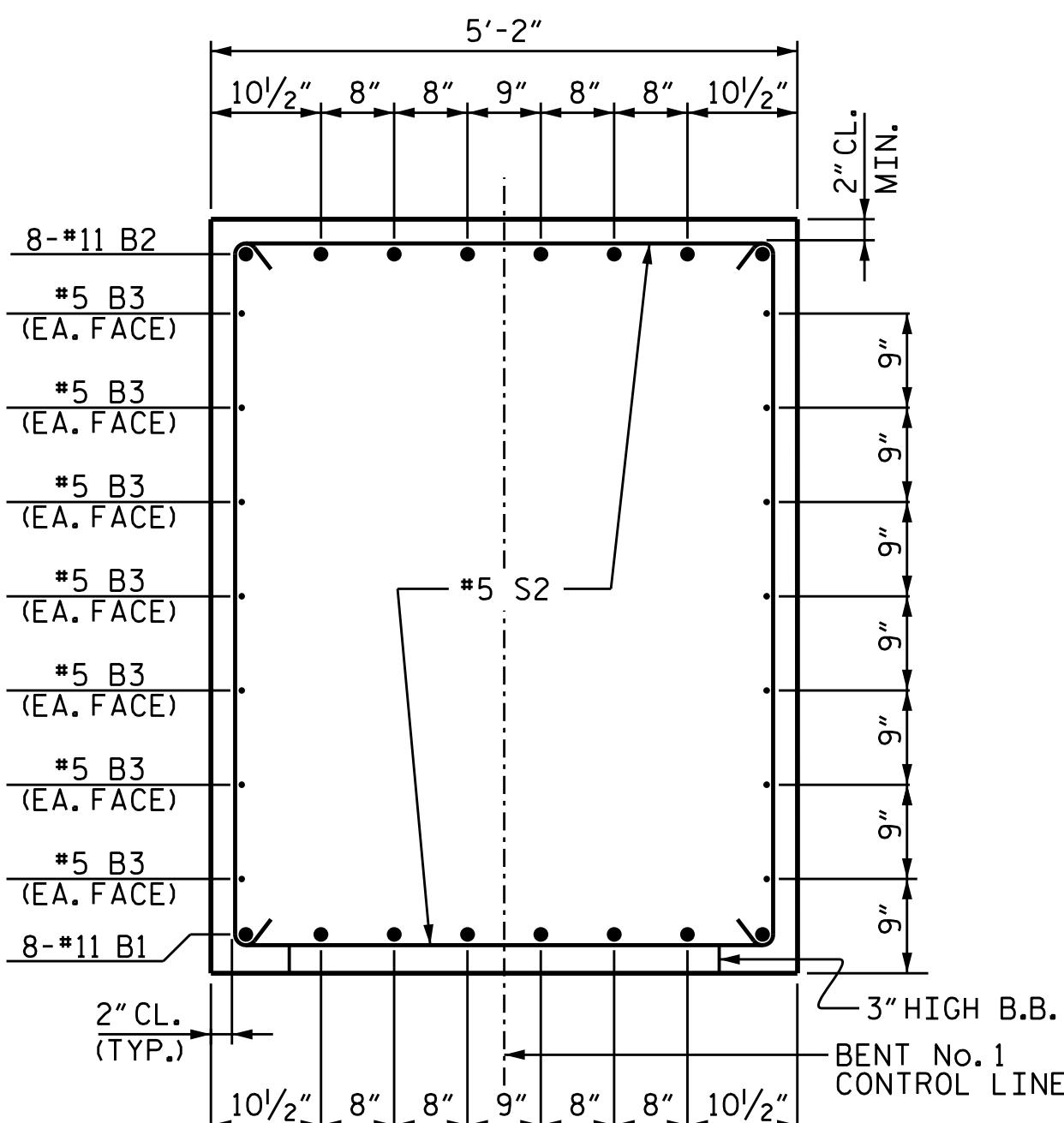
BAR	NO.	SIZE	TYPE	LENGTH	WEIGHT
B1	8	#11	STR	30'-6"	1,296
B2	8	#11	6	33'-6"	1,424
B3	14	#5	STR	30'-6"	445
M1	16	#11	STR	53'-11"	4,583
M2	32	#11	STR	36'-2"	6,149
S1	52	#5	2	15'-3"	827
S2	11	#5	2	17'-0"	195
U1	28	#4	3	7'-10"	147
U2	12	#4	3	7'-8"	61
U3	10	#4	3	8'-5"	56
V1	32	#11	1	21'-8"	3,684
REINFORCING STEEL					18,867 LBS.
SP-1	1	*	4	1383'-11"	1,443
SP-2	1	*	4	1720'-2"	1,794
SP-3	2	**	5	972'-2"	1,299
SPIRAL COLUMN REINFORCING STEEL					4,536 LBS.
* THE SP-1 SPIRAL REINFORCING STEEL SHALL BE W31 OR D-31 COLD DRAWN WIRE OR #5 PLAIN OR DEFORMED BAR					
** THE SP-2 SPIRAL REINFORCING STEEL SHALL BE W20 OR D-20 COLD DRAWN WIRE OR #4 PLAIN OR DEFORMED BAR					



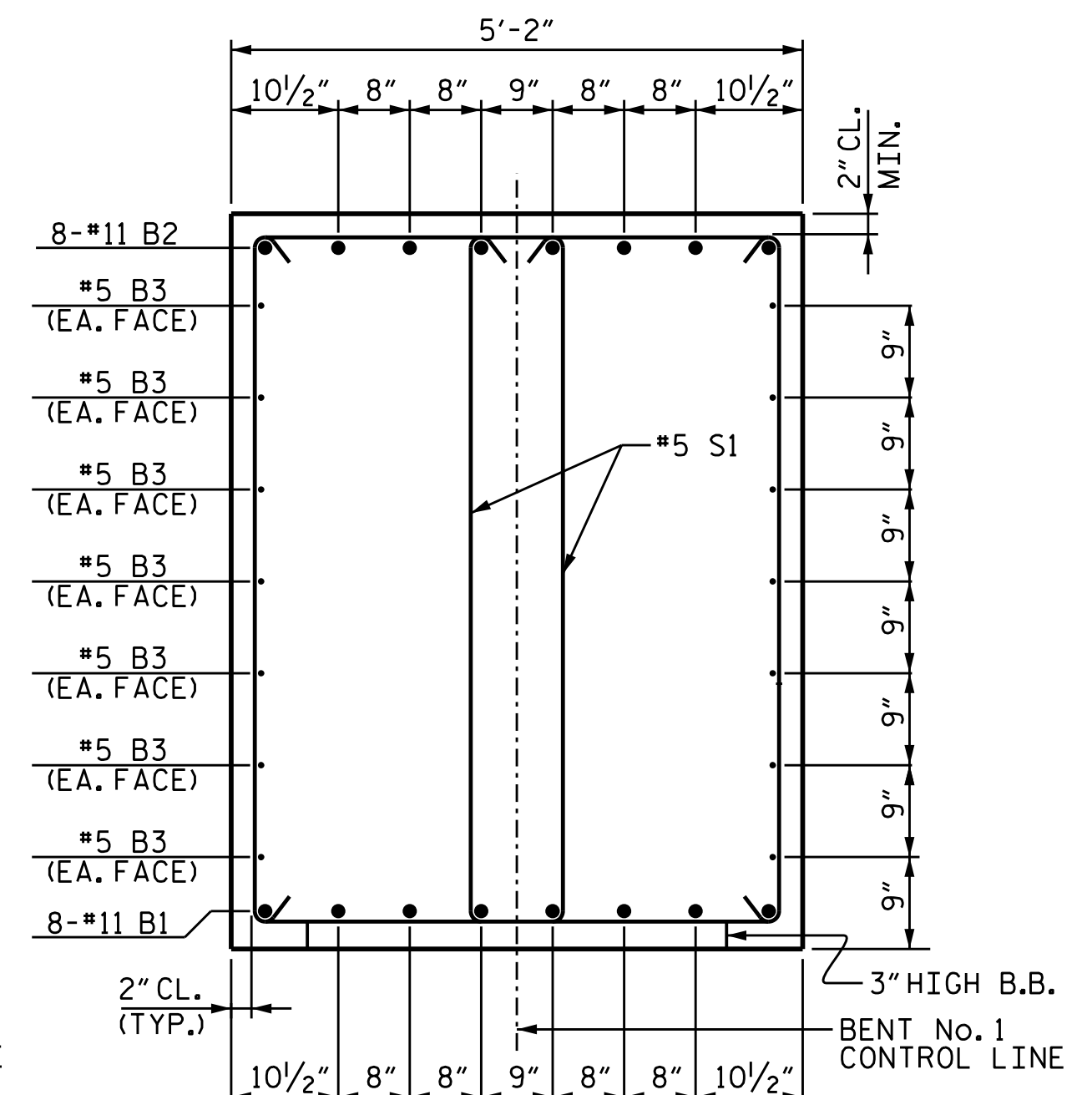
END ELEVATION



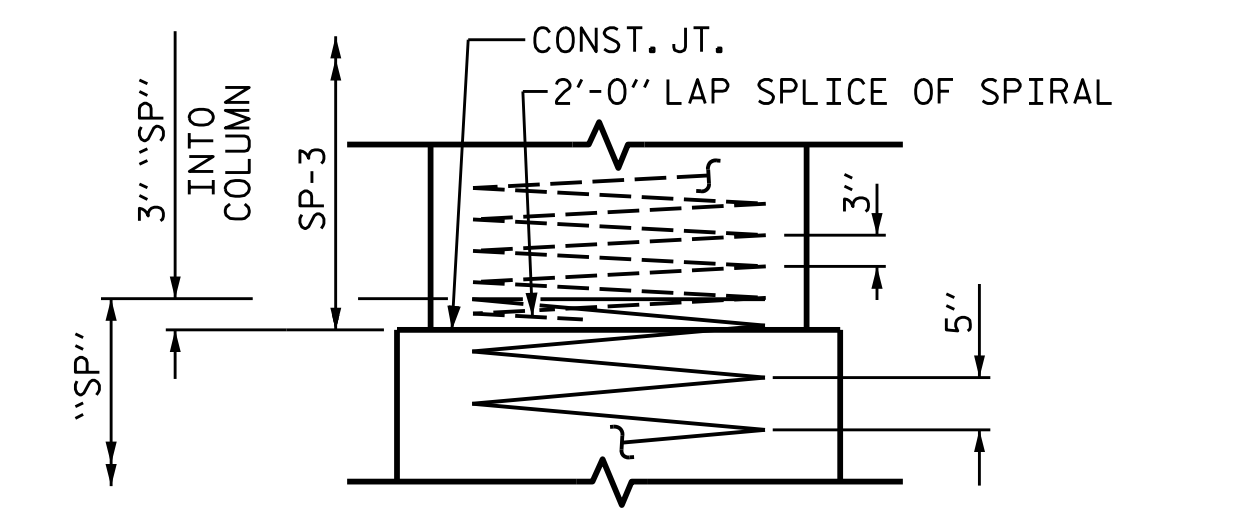
END VIEW



SECTION A-A



SECTION B-B



CLASS A CONCRETE BREAKDOWN

POUR #2 (COLUMNS)	21.2 C.Y.
POUR #3 (CAP)	35.9 C.Y.
TOTAL CLASS A CONCRETE	57.1 C.Y.

DRILLED PIERS:

DRILLED PIER CONCRETE POUR #1	72.1 C.Y.
5'-0" Ø DRILLED PIERS IN SOIL	67.16 LIN. FT.
5'-0" Ø DRILLED PIERS NOT IN SOIL	32.00 LIN. FT.
CSL TUBES	510.83 LIN. FT.

PROJECT NO. B-5825
 YADKIN/FORSYTH COUNTY
 STATION: 34+65.50-L-
 SHEET 2 OF 2

STATE OF NORTH CAROLINA
 DEPARTMENT OF TRANSPORTATION
 RALEIGH
 SUBSTRUCTURE
 BENT No. 1
 PROFESSIONAL ENGINEER
 SEAL 20125
 MARSHALL C. CHECK, JR.
 4/14/2020
 DOCUMENT NOT CONSIDERED FINAL UNLESS ALL SIGNATURES COMPLETED
 TGS ENGINEERS
 706 HILLSBOROUGH STREET
 SUITE 200
 RALEIGH, NC 27603
 PH (919) 773-8887
 CORP. LICENSE NO.: C-0275

DRAWN BY :	TBE	DATE :	10/19
CHECKED BY :	MGC	DATE :	1/20
DESIGN ENGINEER OF RECORD:	TBE	DATE :	2/20

REVISIONS						SHEET NO.
NO.	BY:	DATE:	NO.	BY:	DATE:	S-40
1			3			TOTAL SHEETS
2			4			60