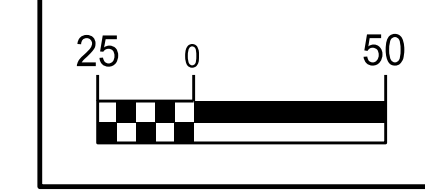


5/14/99

REVISIONS

-Y2-

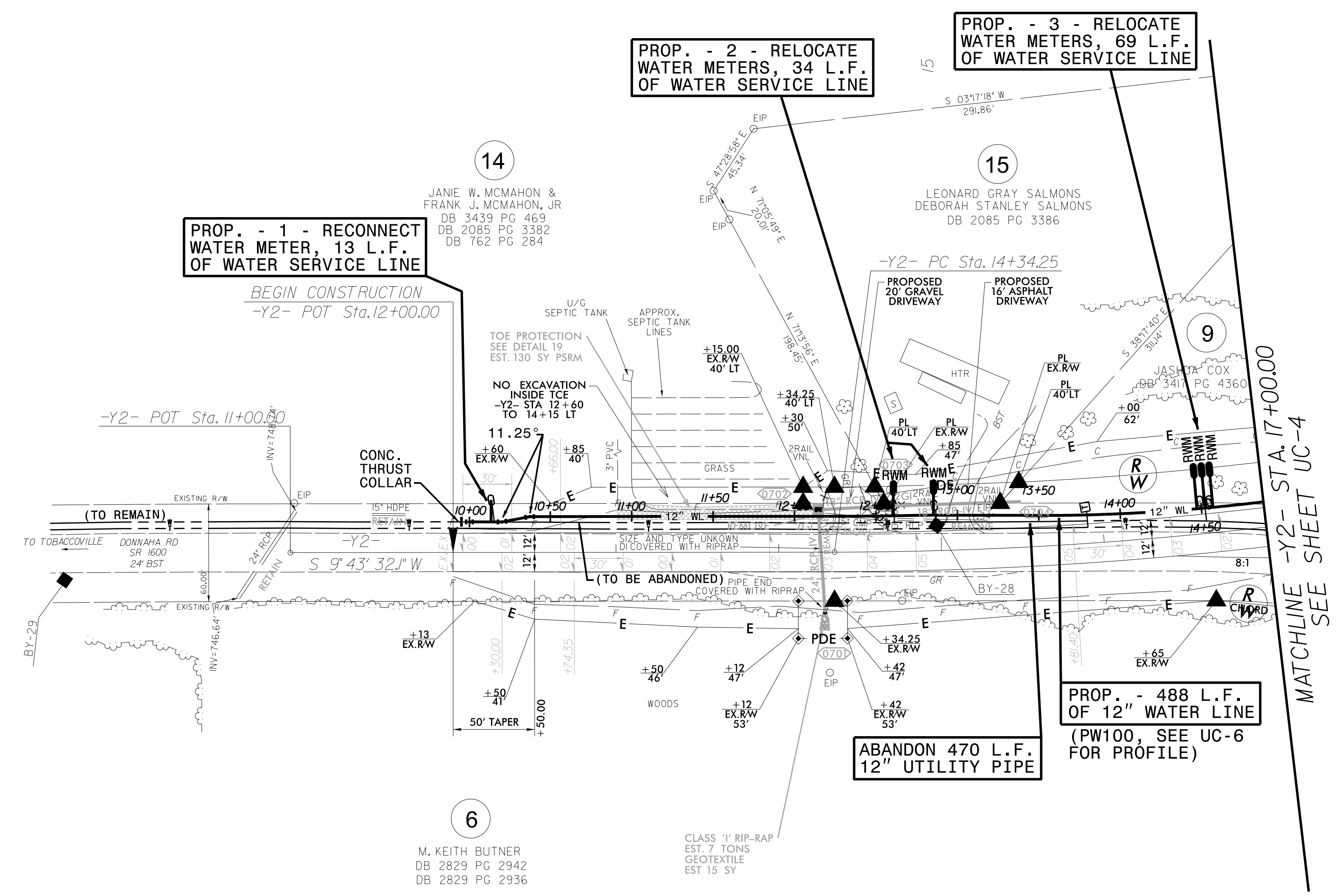
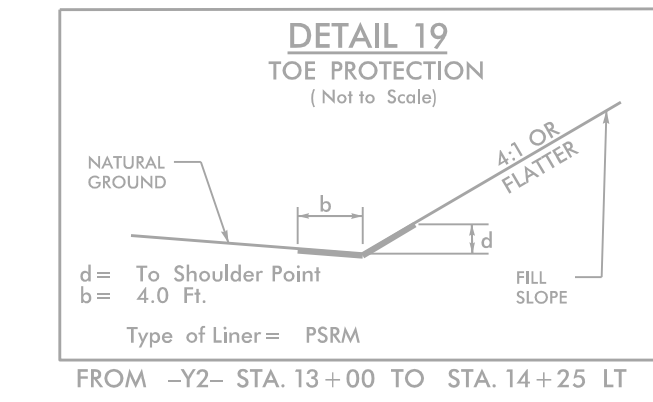
PI Sta 15+83.03
 $\Delta = 7' 18" 25.5" (LT)$
 $D = 2' 27" 32.6"$
 $L = 297.15'$
 $T = 148.78'$
 $R = 2,330.00'$
 $SE = 0.05$
 $Lr = 150'$



PROJECT REFERENCE NO. B-5825	SHEET NO. UC-5
DESIGNED BY: DMP	
DRAWN BY: DMP	
CHECKED BY: DMP	
APPROVED BY:	
REVISED:	
NORTH CAROLINA DEPARTMENT OF TRANSPORTATION	3/27/2020
UTILITIES ENGINEERING SEC. PHONE: (919) 707-6690 FAX: (919) 250-4151	UTILITY CONSTRUCTION PLANS ONLY

UTILITY CONSTRUCTION

DOCUMENT NOT CONSIDERED FINAL UNLESS ALL SIGNATURES COMPLETED



THE ESTIMATED QUANTITY OF D.I. WATER PIPE FITTINGS ON THIS PLAN SHEET IS 585 POUNDS. THE ACTUAL QUANTITY AND TYPE OF FITTINGS WILL VARY BASED ON FIELD CONDITIONS.