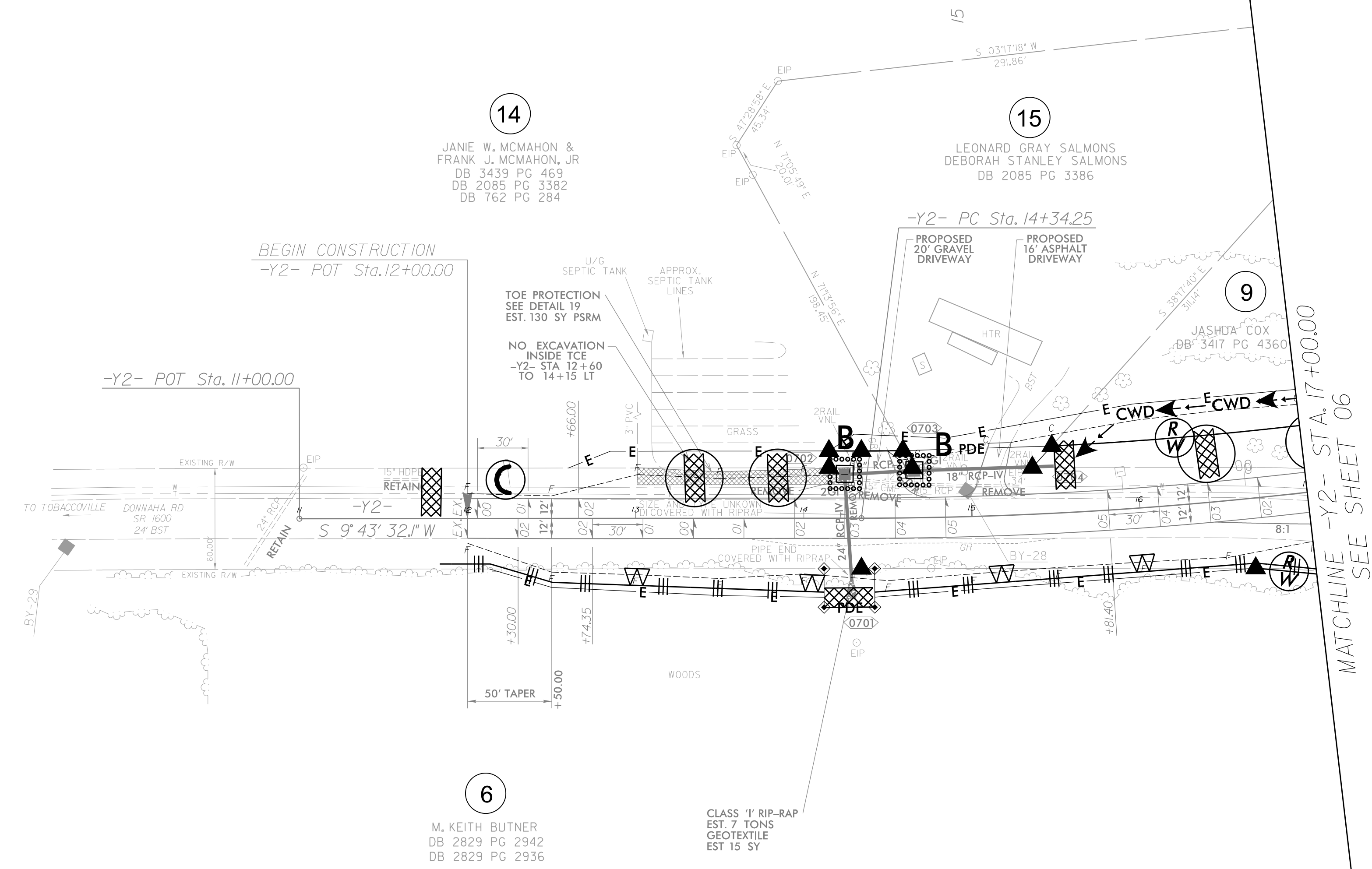
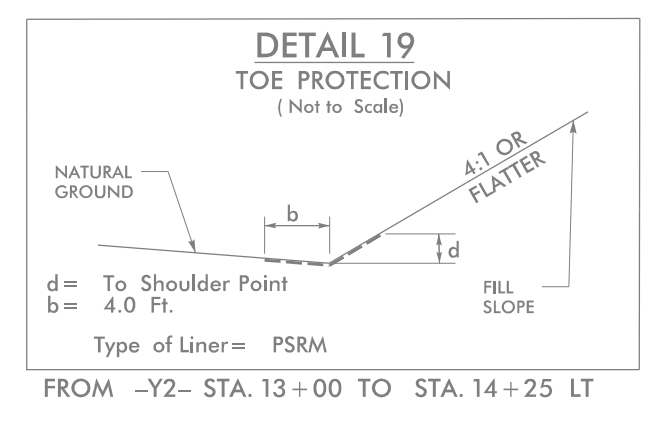
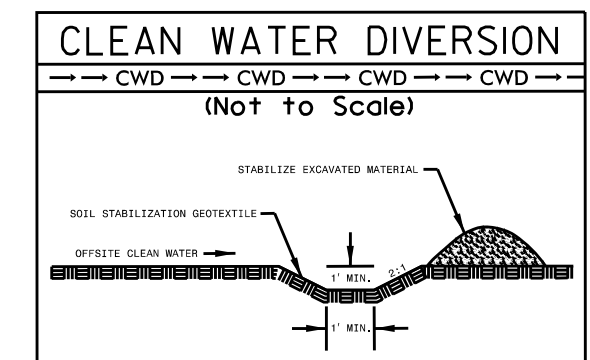


PROJECT REFERENCE NO.		SHEET NO.	
B-5825		EC-11/CONST.07	
RW SHEET NO.			
ROADWAY DESIGN ENGINEER		HYDRAULICS ENGINEER	
TGS ENGINEERS		TGS ENGINEERS	
706 HILLSBOROUGH ST. SUITE 200		706 HILLSBOROUGH ST. SUITE 200	
RALEIGH, NC 27603		RALEIGH, NC 27603	
PH (919) 773-8887		PH (919) 773-8887	
CORP. LICENSE NO.: C-0275		CORP. LICENSE NO.: C-0275	

-Y2-
 PI Sta 15+83.03
 $\Delta = 7'18" 25.5' (LT)$
 $D = 2'27" 32.6'$
 $L = 297.15'$
 $T = 148.78'$
 $R = 2,330.00'$
 $SE = 0.05$
 $Lr = 150'$



For Slopes Excavated Greater Than 10 feet
 Install Matting for Erosion Control on
 Entire Slope as Work Allows.

SEE SHEET 10 FOR -Y2- PROFILE