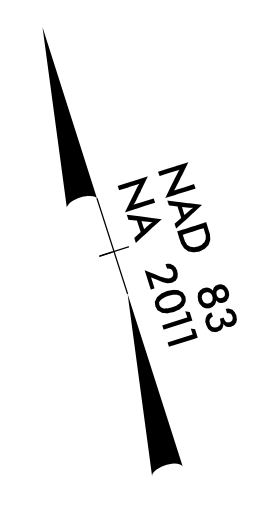
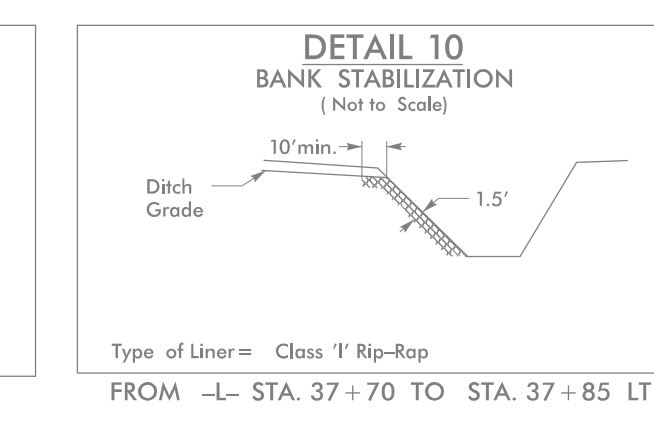
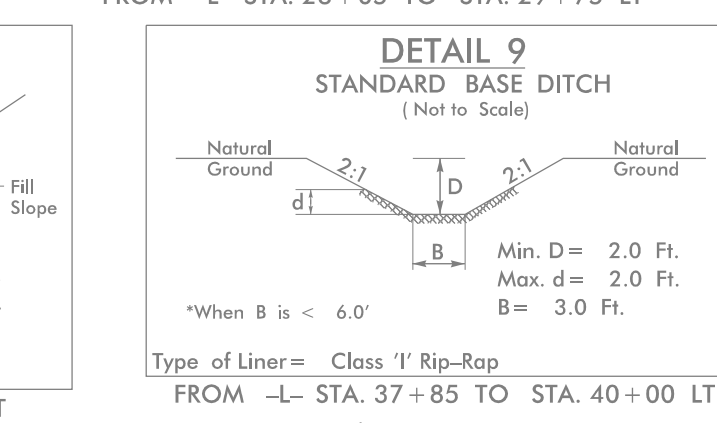
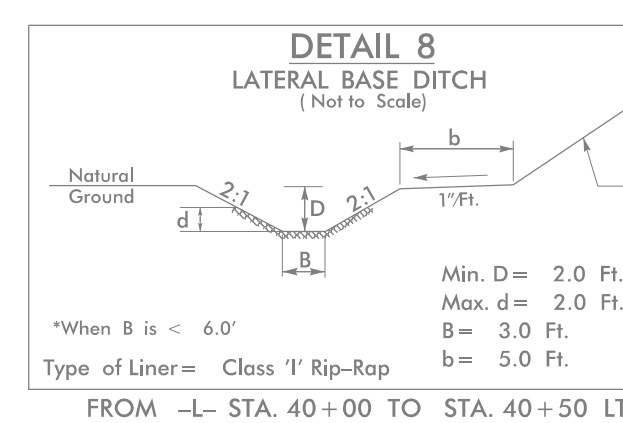
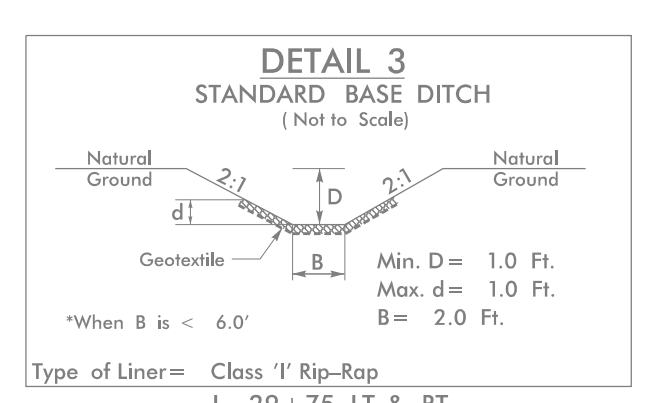
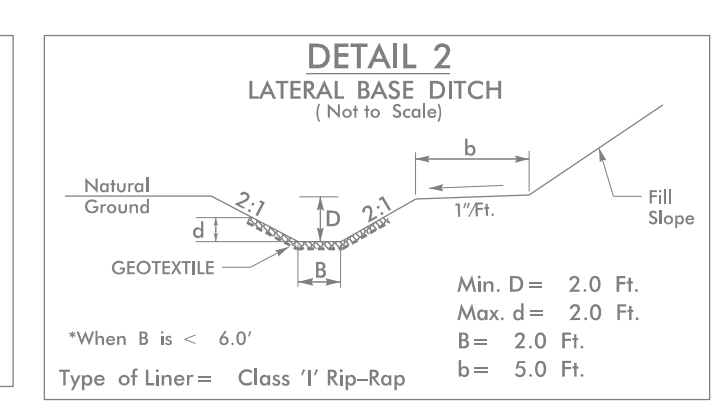
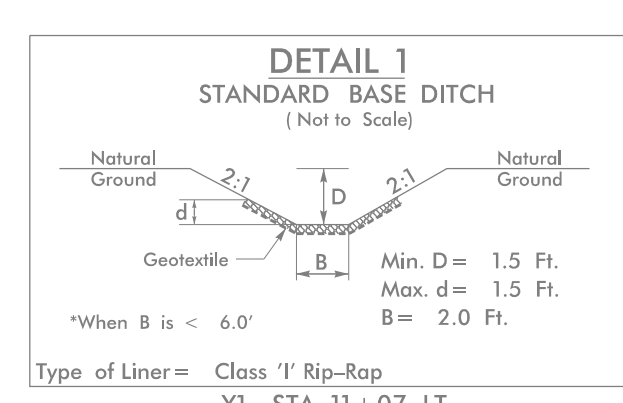


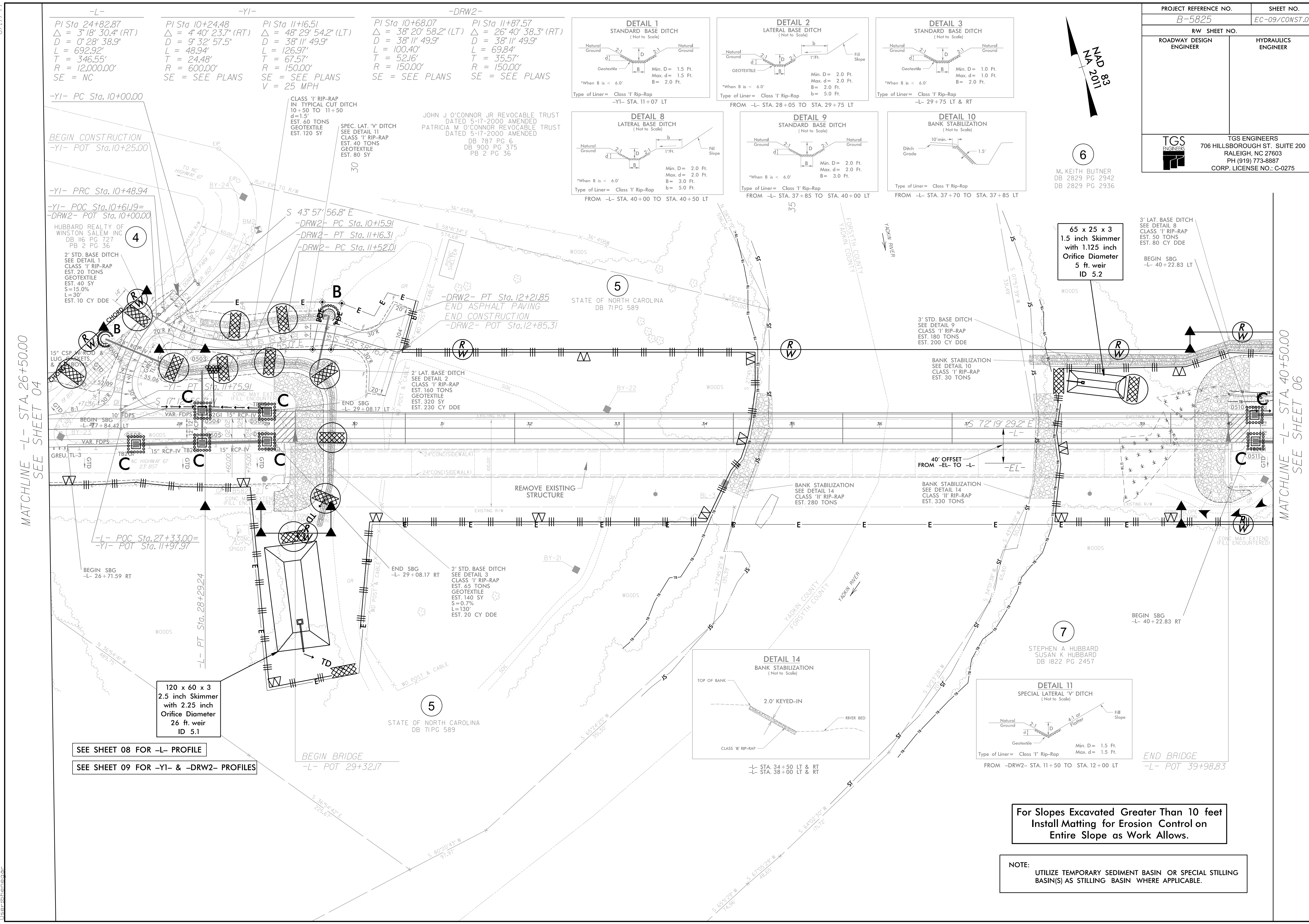
PROJECT REFERENCE NO. B-5825		SHEET NO. EC-09/CONST.05	
RW SHEET NO.		HYDRAULICS ENGINEER	
ROADWAY DESIGN ENGINEER		TGS ENGINEERS 706 HILLSBOROUGH ST., SUITE 200 RALEIGH, NC 27603 PH (919) 773-8887 CORP. LICENSE NO.: C-0275	



-L-	-YI-	-DRW2-
PI Sta 24+82.87 Δ = 3' 18" 30.4" (RT) D = 0' 28" 38.9" L = 692.92' T = 346.55' R = 12,000.00' SE = NC	PI Sta 10+24.48 Δ = 4' 40" 23.7" (RT) D = 9' 32" 57.5" L = 48.94' T = 24.48' R = 600.00' SE = SEE PLANS	PI Sta 11+6.51 Δ = 48' 29" 54.2" (LT) D = 38' 11" 49.9" L = 126.97' T = 67.57' R = 150.00' SE = SEE PLANS
PI Sta 10+68.07 Δ = 38' 20" 58.2" (LT) D = 38' 11" 49.9" L = 100.40' T = 52.16' R = 150.00' SE = SEE PLANS	PI Sta 11+87.57 Δ = 26' 40" 38.3" (RT) D = 38' 11" 49.9" L = 69.84' T = 35.57' R = 150.00' SE = SEE PLANS	



6
M. KEITH BUTNER
DB 2829 PG 2942
DB 2829 PG 2936

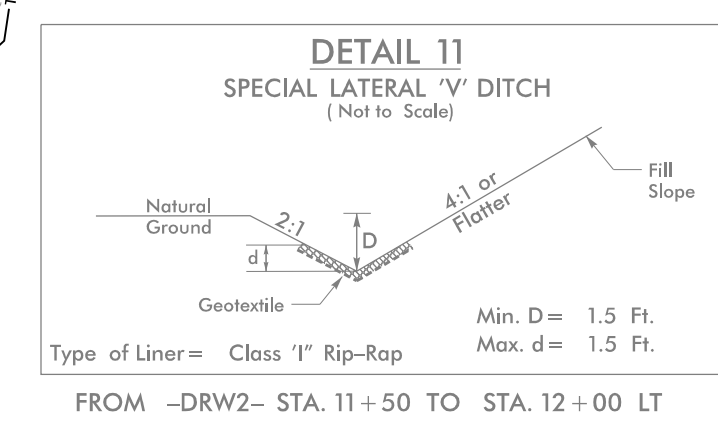
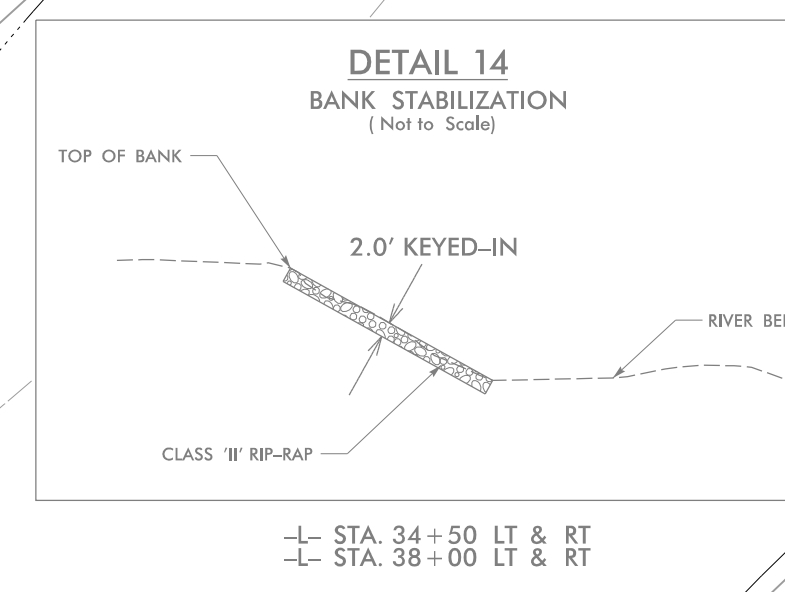


MATCHLINE -L- STA. 26+50.00
SEE SHEET 04

MATCHLINE -L- STA. 40+50.00
SEE SHEET 06

120 x 60 x 3
2.5 inch Skimmer
with 2.25 inch
Orifice Diameter
26 ft. weir
ID 5.1

SEE SHEET 08 FOR -L- PROFILE
SEE SHEET 09 FOR -YI- & -DRW2- PROFILES



For Slopes Excavated Greater Than 10 feet
Install Matting for Erosion Control on
Entire Slope as Work Allows.

NOTE:
UTILIZE TEMPORARY SEDIMENT BASIN OR SPECIAL STILLING
BASIN(S) AS STILLING BASIN WHERE APPLICABLE.

3/10/2020 B-5825-09-arrange\Erason Control\Final Sheets\B-5825-EC-dsn-EC-9.dgn
8/17/99