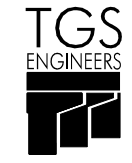
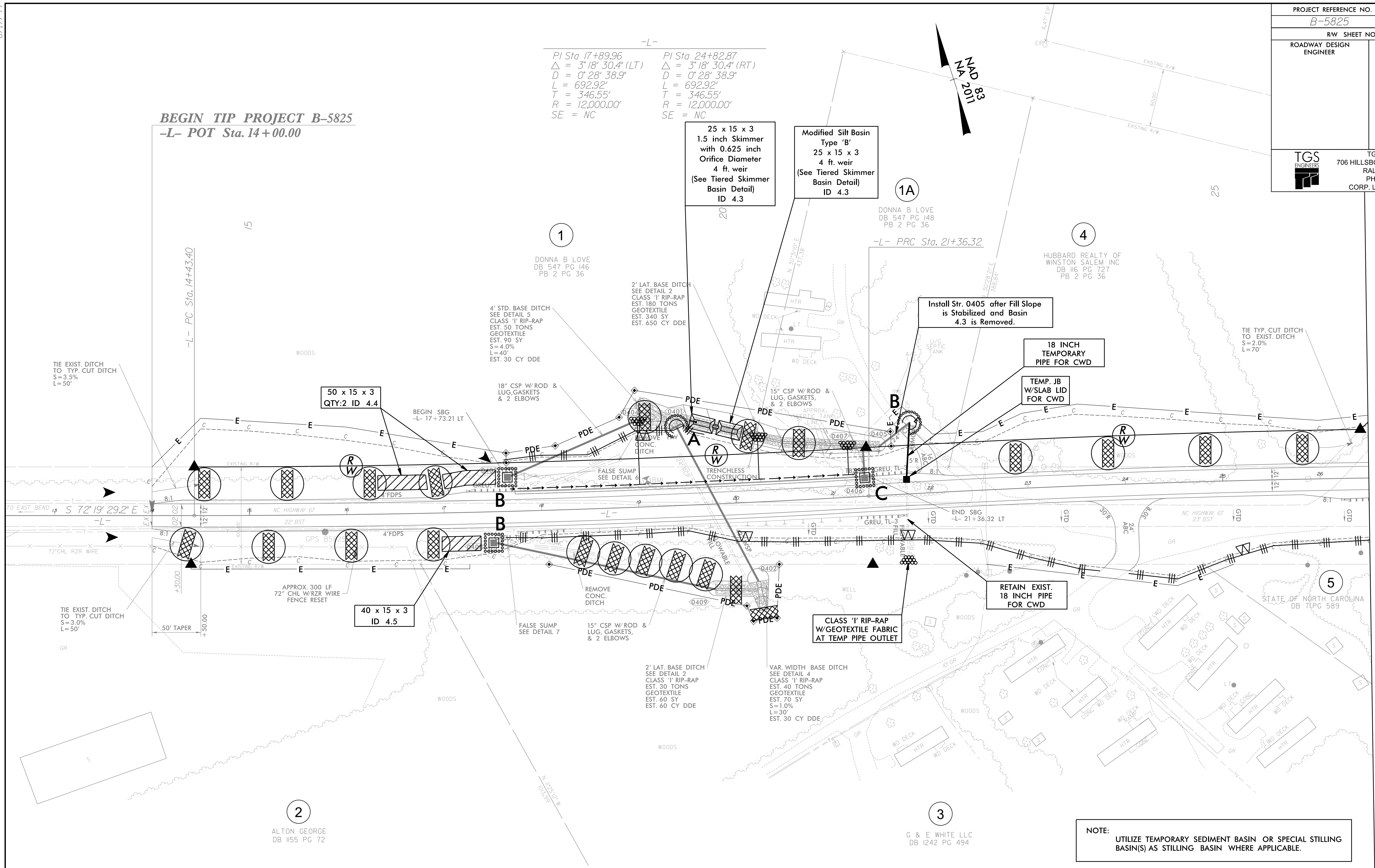


PROJECT REFERENCE NO.	SHEET NO.
B-5825	EC-08/CONST.04
RW SHEET NO.	
ROADWAY DESIGN ENGINEER	HYDRAULICS ENGINEER
 TGS ENGINEERS 706 HILLSBOROUGH ST., SUITE 200 RALEIGH, NC 27603 PH (919) 773-8887 CORP. LICENSE NO.: C-0275	

-L-

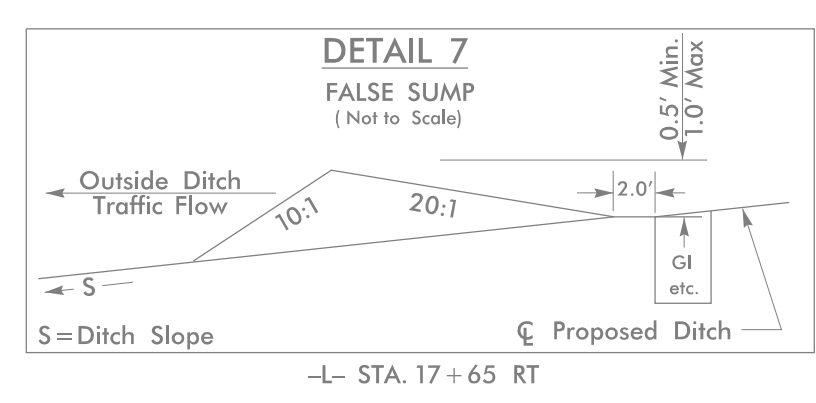
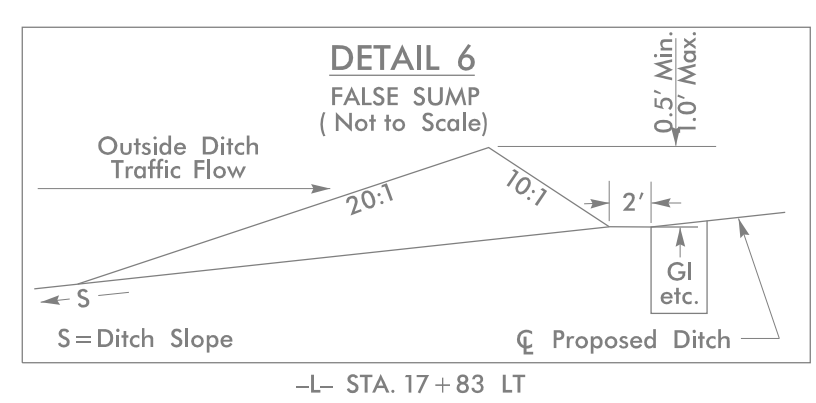
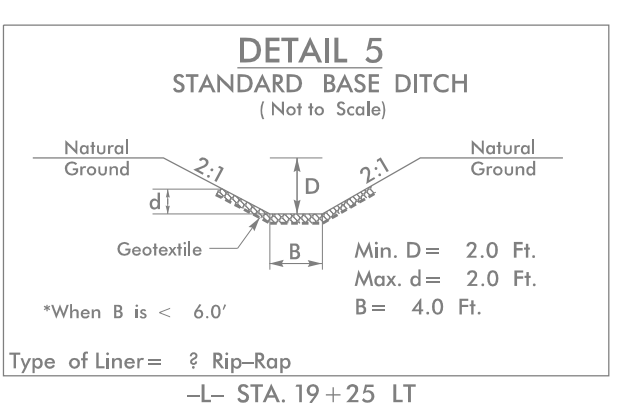
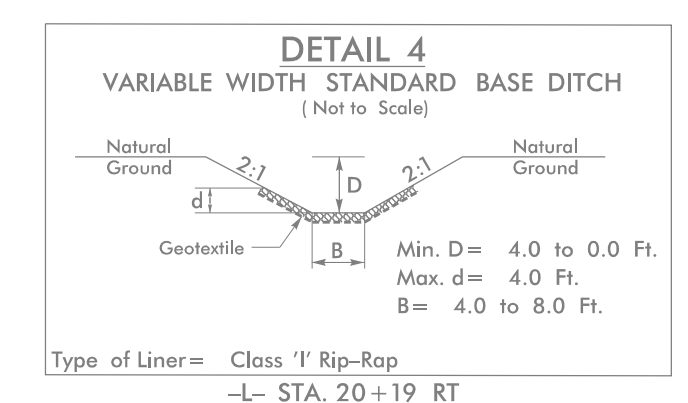
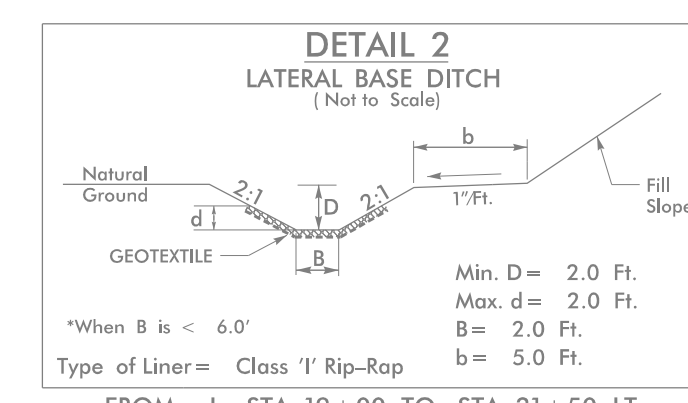
PI Sta 17+89.96	PI Sta 24+82.87
$\Delta = 3' 18" 30.4" (LT)$	$\Delta = 3' 18" 30.4" (RT)$
$D = 0' 28" 38.9"$	$D = 0' 28" 38.9"$
$L = 692.92'$	$L = 692.92'$
$T = 346.55'$	$T = 346.55'$
$R = 12,000.00'$	$R = 12,000.00'$
SE = NC	SE = NC

BEGIN TIP PROJECT B-5825
-L- POT Sta. 14+00.00



NOTE: UTILIZE TEMPORARY SEDIMENT BASIN OR SPECIAL STILLING BASIN(S) AS STILLING BASIN WHERE APPLICABLE.

For Slopes Excavated Greater Than 10 feet
Install Matting for Erosion Control on
Entire Slope as Work Allows.



SEE SHEET 08 FOR -L- PROFILE

MATCHLINE -L- STA. 26+50.00
SEE SHEET 05

8/17/99
4/23/2020
X:\WORK\B-5825\Drawings\Erosion Control\Final Sheets\B-5825_EC.dwg - EC-8.dwg