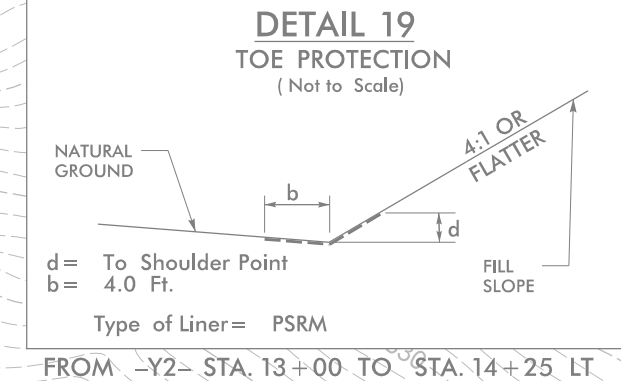
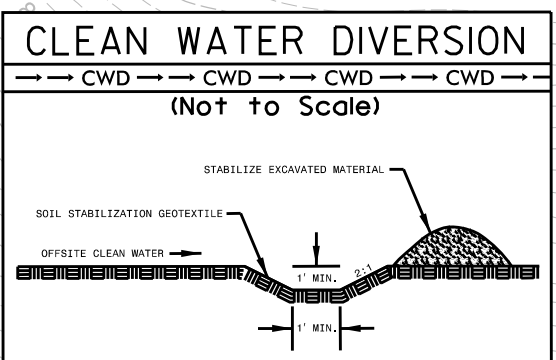


PROJECT REFERENCE NO. B-5825		SHEET NO. EC-07/CONST.07	
RW SHEET NO.			
ROADWAY DESIGN ENGINEER		HYDRAULICS ENGINEER	
TGS ENGINEERS		TGS ENGINEERS	
706 HILLSBOROUGH ST., SUITE 200		706 HILLSBOROUGH ST., SUITE 200	
RALEIGH, NC 27603		RALEIGH, NC 27603	
PH (919) 773-8887		PH (919) 773-8887	
CORP. LICENSE NO.: C-0275		CORP. LICENSE NO.: C-0275	

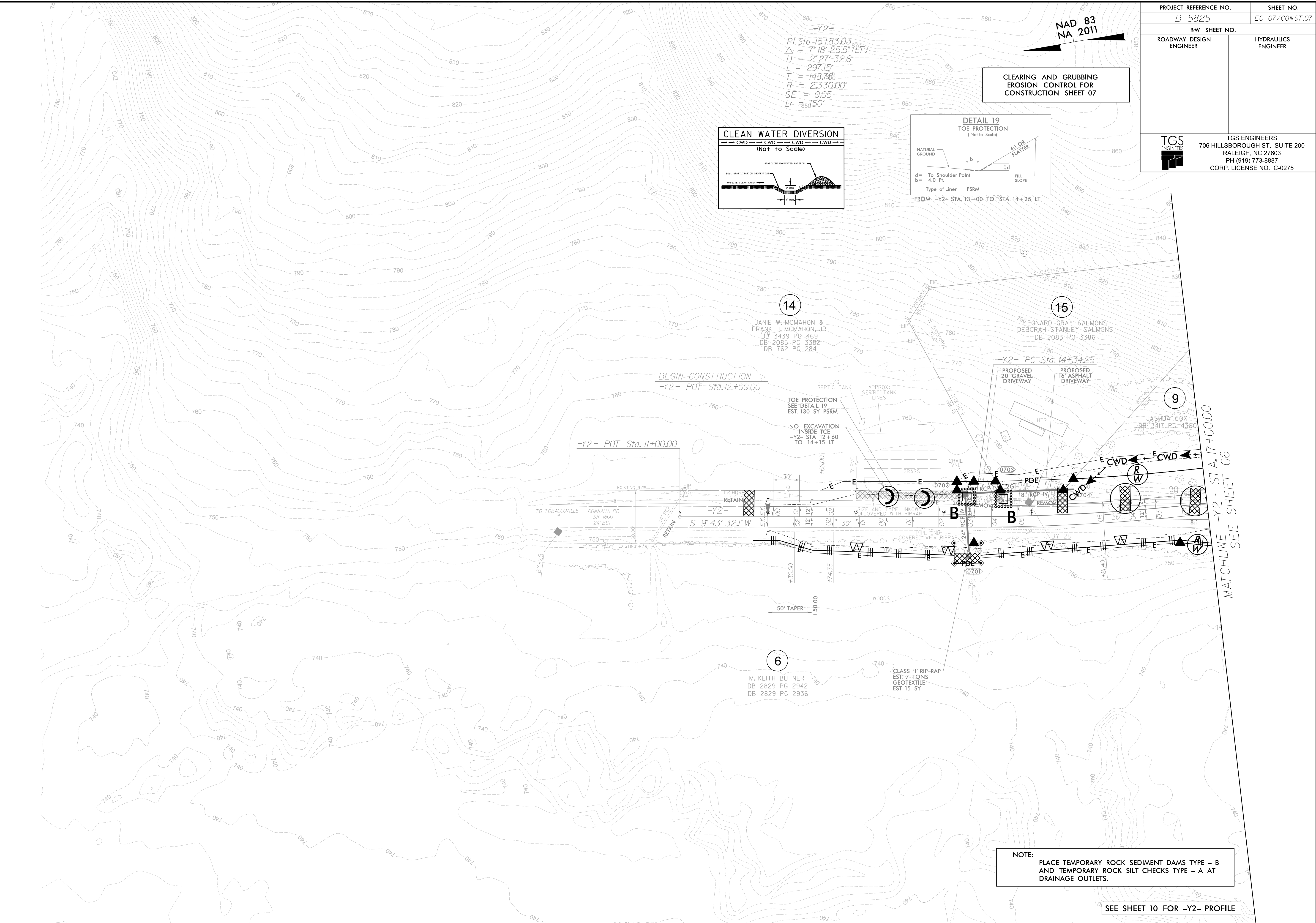
NAD 83
NA 2011

-Y2-
PI Sta 15+83.03
 $\Delta = 7'18"25.5"$ (LT)
 $D = 2'27"32.6"$
 $L = 297.15'$
 $T = 148.78'$
 $SE = 0.05$
 $LF = 85.15'$

CLEARING AND GRUBBING
EROSION CONTROL FOR
CONSTRUCTION SHEET 07



3/10/2020 X:\NORTH\B-5825\Drawings\Erosion Control\CG Sheets\B-5825_EC.dwg EC-7.dgn



NOTE: PLACE TEMPORARY ROCK SEDIMENT DAMS TYPE - B AND TEMPORARY ROCK SILT CHECKS TYPE - A AT DRAINAGE OUTLETS.

SEE SHEET 10 FOR -Y2- PROFILE