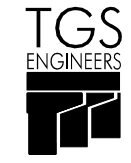
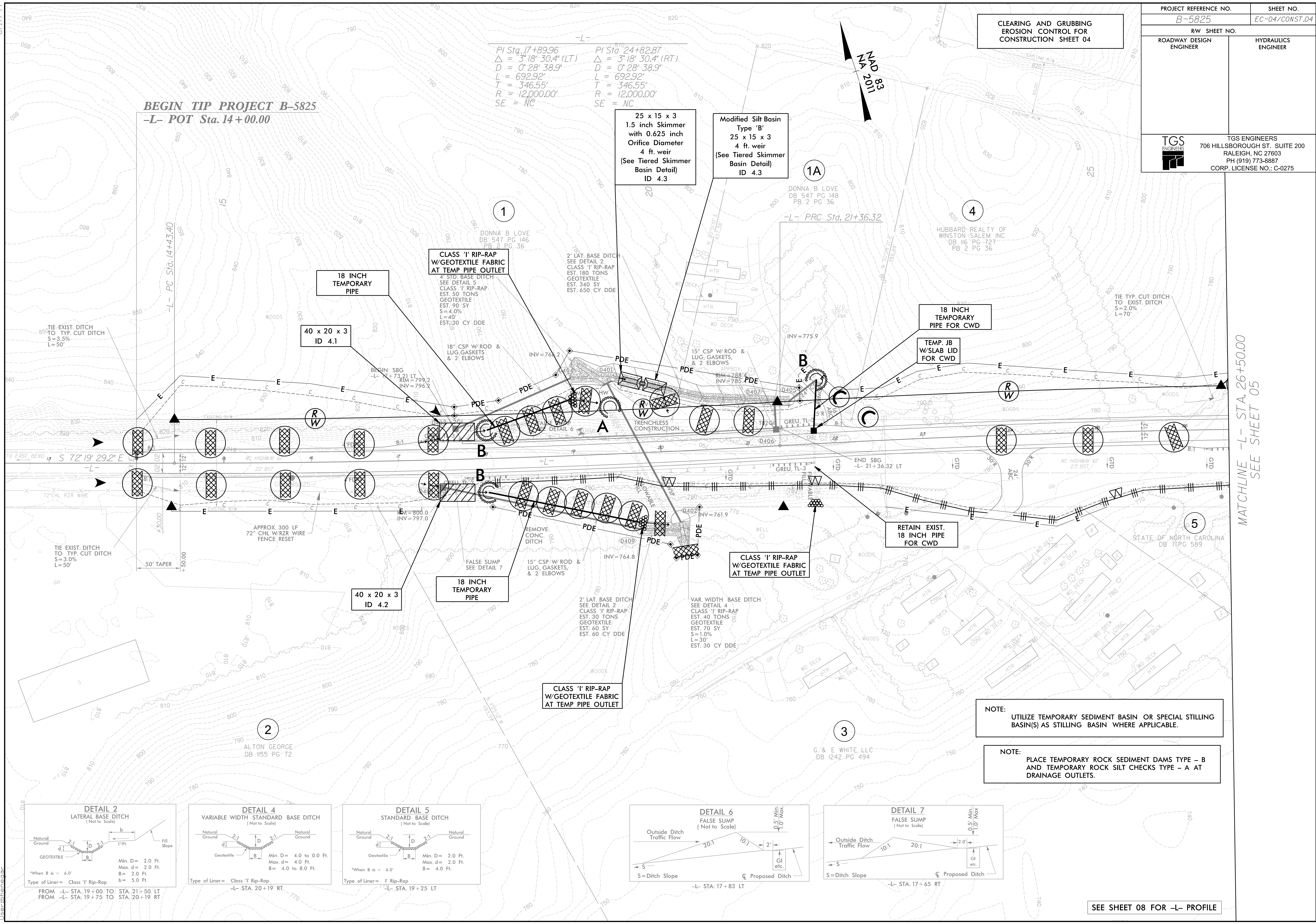
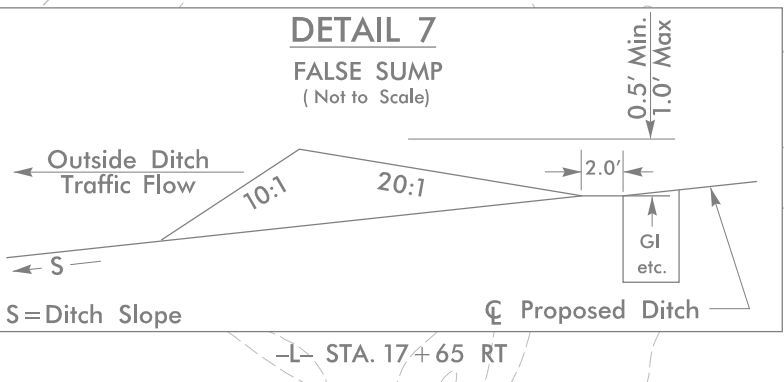
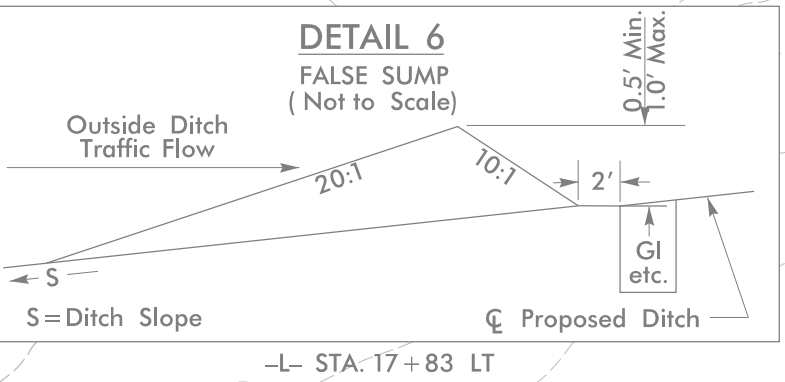
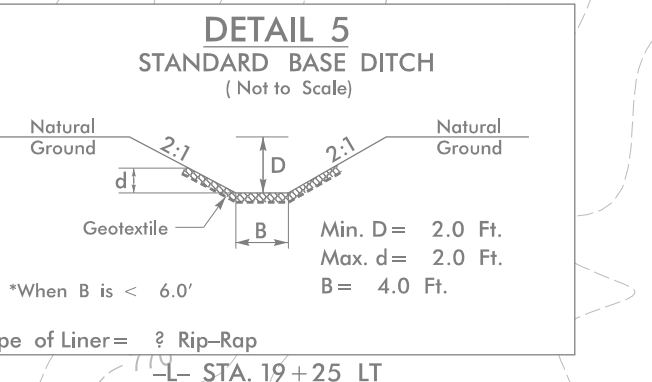
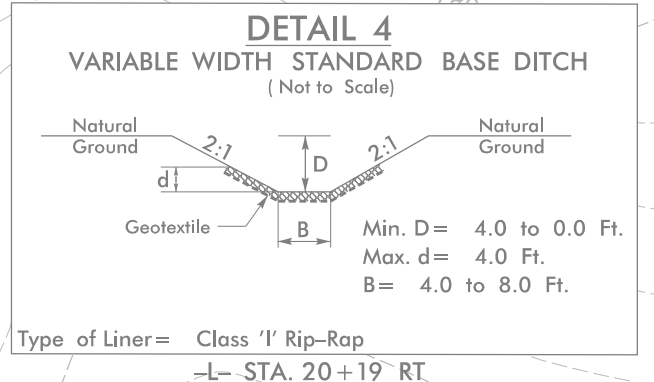
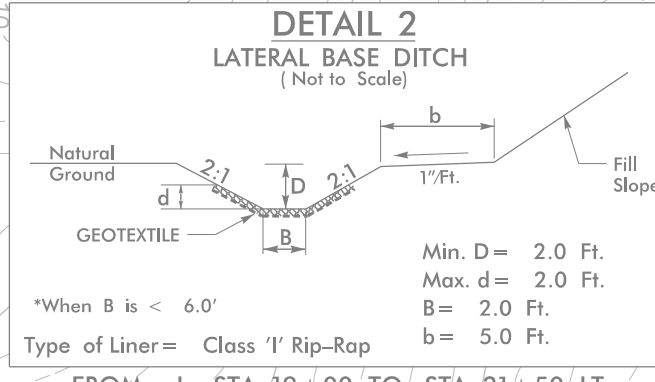


PROJECT REFERENCE NO. B-5825	SHEET NO. EC-04/CONST.04
RW SHEET NO.	
ROADWAY DESIGN ENGINEER	HYDRAULICS ENGINEER
 <b>TGS ENGINEERS</b> 706 HILLSBOROUGH ST., SUITE 200 RALEIGH, NC 27603 PH (919) 773-8887 CORP. LICENSE NO.: C-0275	



PI Sta. 17+89.96 Δ = 3' 18" 30.4" (LT) D = 0' 28" 38.9" L = 692.92' T = 346.55' R = 12,000.00' SE = NC

PI Sta. 24+82.87 Δ = 3' 18" 30.4" (RT) D = 0' 28" 38.9" L = 692.92' T = 346.55' R = 12,000.00' SE = NC



SEE SHEET 08 FOR -L- PROFILE

MATCHLINE -L- STA. 26+50.00 SEE SHEET 05

4/23/2020 X:\work\B-5825\Drawings\Erosion Control\CG Sheets\B-5825\_EC.dwg EC-4.dwg