

5/28/20

TGS ENGINEERS
 706 HILLSBOROUGH ST. SUITE 200
 RALEIGH, NC 27603
 PH (919) 773-8887
 CORP. LICENSE NO.: C-0275

EXISTING GROUND

PROPOSED GRADE

LEFT DITCH GRADE

RIGHT DITCH GRADE

PROJECT REFERENCE NO. B-5825	SHEET NO. 10
ROADWAY DESIGN ENGINEER 	HYDRAULICS ENGINEER
3/19/2020 11:57 AM EDT	3/19/2020 8:57 AM PDT

-Y2- SR 1600

PIPE HYDRAULIC DATA
 *0702 -Y2- Sta. 14+32

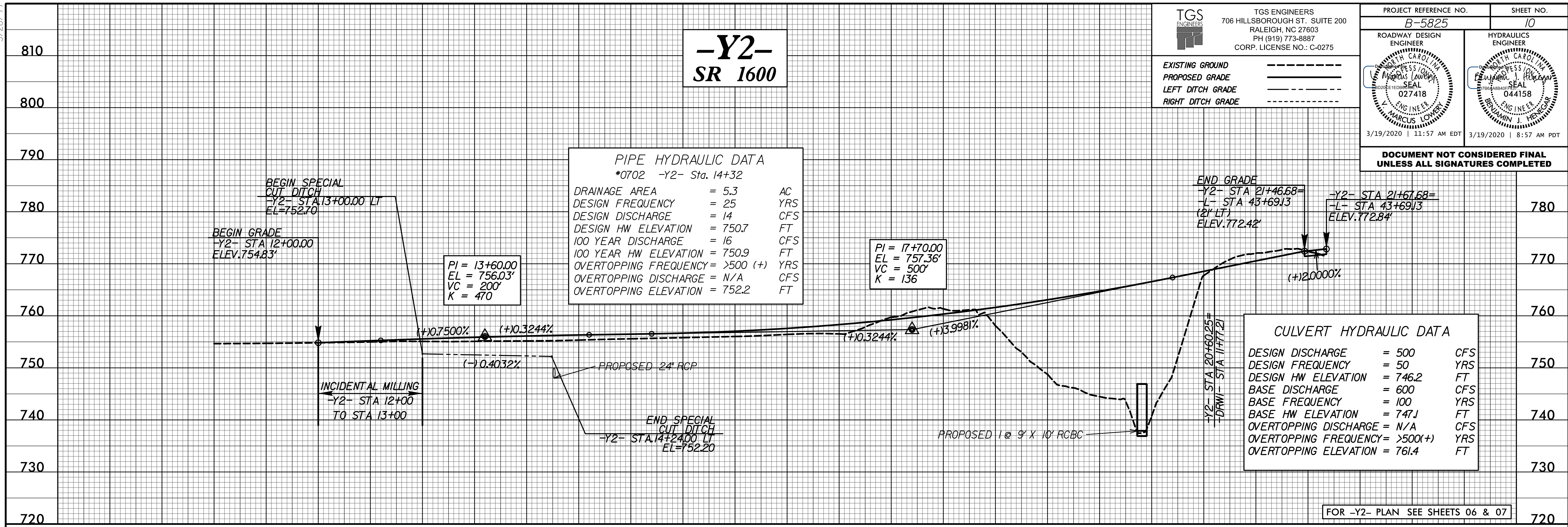
DRAINAGE AREA	= 5.3	AC
DESIGN FREQUENCY	= 25	YRS
DESIGN DISCHARGE	= 14	CFS
DESIGN HW ELEVATION	= 750.7	FT
100 YEAR DISCHARGE	= 16	CFS
100 YEAR HW ELEVATION	= 750.9	FT
OVERTOPPING FREQUENCY	= >500 (+)	YRS
OVERTOPPING DISCHARGE	= N/A	CFS
OVERTOPPING ELEVATION	= 752.2	FT

PI = 13+60.00
 EL = 756.03'
 VC = 200'
 K = 470

PI = 17+70.00
 EL = 757.36'
 VC = 500'
 K = 136

CULVERT HYDRAULIC DATA

DESIGN DISCHARGE	= 500	CFS
DESIGN FREQUENCY	= 50	YRS
DESIGN HW ELEVATION	= 746.2	FT
BASE DISCHARGE	= 600	CFS
BASE FREQUENCY	= 100	YRS
BASE HW ELEVATION	= 747.1	FT
OVERTOPPING DISCHARGE	= N/A	CFS
OVERTOPPING FREQUENCY	= >500 (+)	YRS
OVERTOPPING ELEVATION	= 761.4	FT



FOR -Y2- PLAN SEE SHEETS 06 & 07

3/19/2020 10:58:25 AM B-5825-Roadway\Proj\B5825_rdy_pf1_10.dgn