
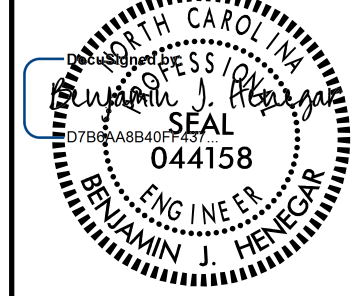
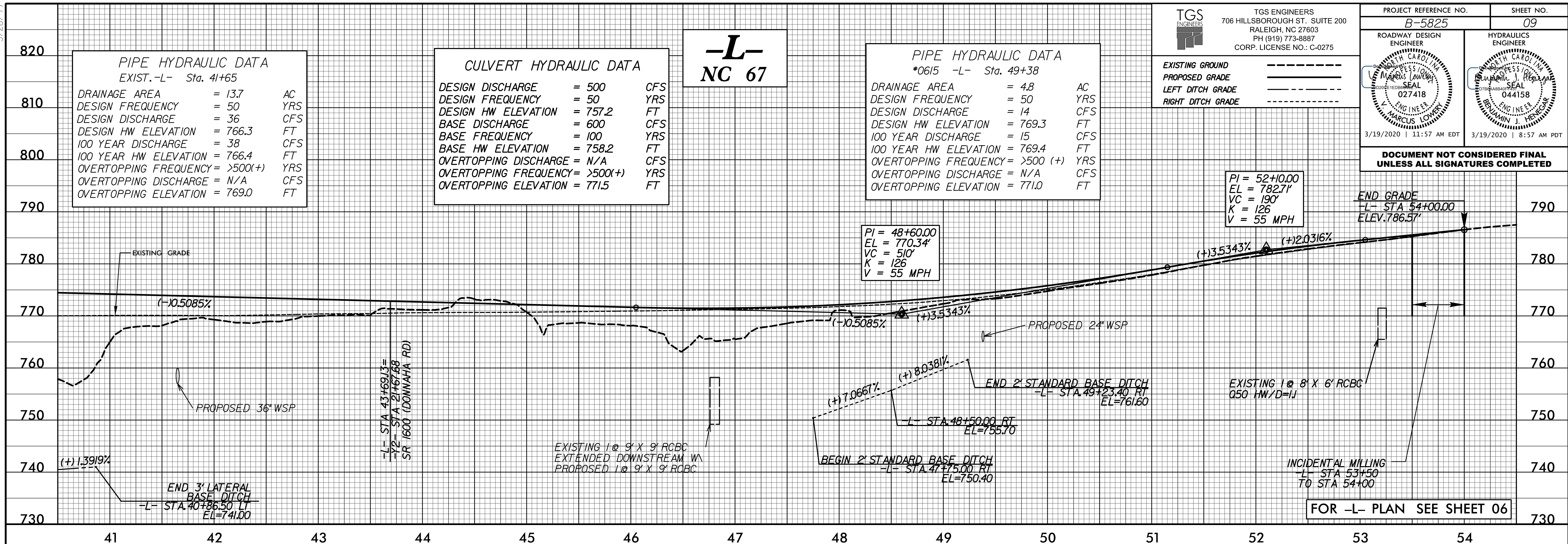


5/28/20

TGS ENGINEERS
 706 HILLSBOROUGH ST. SUITE 200
 RALEIGH, NC 27603
 PH (919) 773-8887
 CORP. LICENSE NO.: C-0275

PROJECT REFERENCE NO. B-5825	SHEET NO. 09
ROADWAY DESIGN ENGINEER 	HYDRAULICS ENGINEER 
3/19/2020 11:57 AM EDT	3/19/2020 8:57 AM PDT

DOCUMENT NOT CONSIDERED FINAL UNLESS ALL SIGNATURES COMPLETED



PIPE HYDRAULIC DATA
 EXIST.-L- Sta. 41+65

DRAINAGE AREA	= 13.7	AC
DESIGN FREQUENCY	= 50	YRS
DESIGN DISCHARGE	= 36	CFS
DESIGN HW ELEVATION	= 766.3	FT
100 YEAR DISCHARGE	= 38	CFS
100 YEAR HW ELEVATION	= 766.4	FT
OVERTOPPING FREQUENCY	= >500(+)	YRS
OVERTOPPING DISCHARGE	= N/A	CFS
OVERTOPPING ELEVATION	= 769.0	FT

CULVERT HYDRAULIC DATA

DESIGN DISCHARGE	= 500	CFS
DESIGN FREQUENCY	= 50	YRS
DESIGN HW ELEVATION	= 757.2	FT
BASE DISCHARGE	= 600	CFS
BASE FREQUENCY	= 100	YRS
BASE HW ELEVATION	= 758.2	FT
OVERTOPPING DISCHARGE	= N/A	CFS
OVERTOPPING FREQUENCY	= >500(+)	YRS
OVERTOPPING ELEVATION	= 771.5	FT

-L-
NC 67

PIPE HYDRAULIC DATA
 *0615 -L- Sta. 49+38

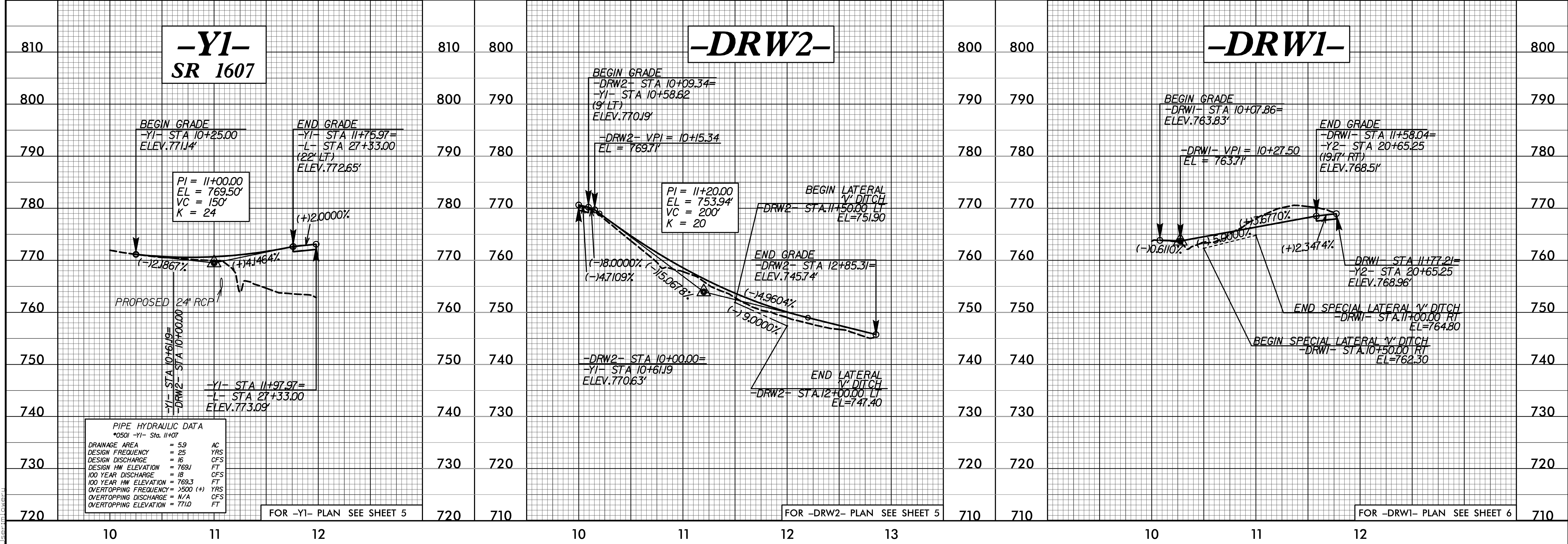
DRAINAGE AREA	= 4.8	AC
DESIGN FREQUENCY	= 50	YRS
DESIGN DISCHARGE	= 14	CFS
DESIGN HW ELEVATION	= 769.3	FT
100 YEAR DISCHARGE	= 15	CFS
100 YEAR HW ELEVATION	= 769.4	FT
OVERTOPPING FREQUENCY	= >500 (+)	YRS
OVERTOPPING DISCHARGE	= N/A	CFS
OVERTOPPING ELEVATION	= 771.0	FT

EXISTING GROUND
 PROPOSED GRADE
 LEFT DITCH GRADE
 RIGHT DITCH GRADE

PI = 52+10.00
 EL = 782.71'
 VC = 190'
 K = 126
 V = 55 MPH

PI = 48+60.00
 EL = 770.34'
 VC = 510'
 K = 126
 V = 55 MPH

FOR -L- PLAN SEE SHEET 06



-Y1-
SR 1607

-DRW2-

-DRW1-

PIPE HYDRAULIC DATA
 *0501 -Y1- Sta. 11+07

DRAINAGE AREA	= 5.9	AC
DESIGN FREQUENCY	= 25	YRS
DESIGN DISCHARGE	= 16	CFS
DESIGN HW ELEVATION	= 769.1	FT
100 YEAR DISCHARGE	= 18	CFS
100 YEAR HW ELEVATION	= 769.3	FT
OVERTOPPING FREQUENCY	= >500 (+)	YRS
OVERTOPPING DISCHARGE	= N/A	CFS
OVERTOPPING ELEVATION	= 771.0	FT

FOR -Y1- PLAN SEE SHEET 5

FOR -DRW2- PLAN SEE SHEET 5

FOR -DRW1- PLAN SEE SHEET 6

3/19/2020 10:58:25 AM Roadway\Proj\B5825_rdy_of1_09.dgn