

8/17/19

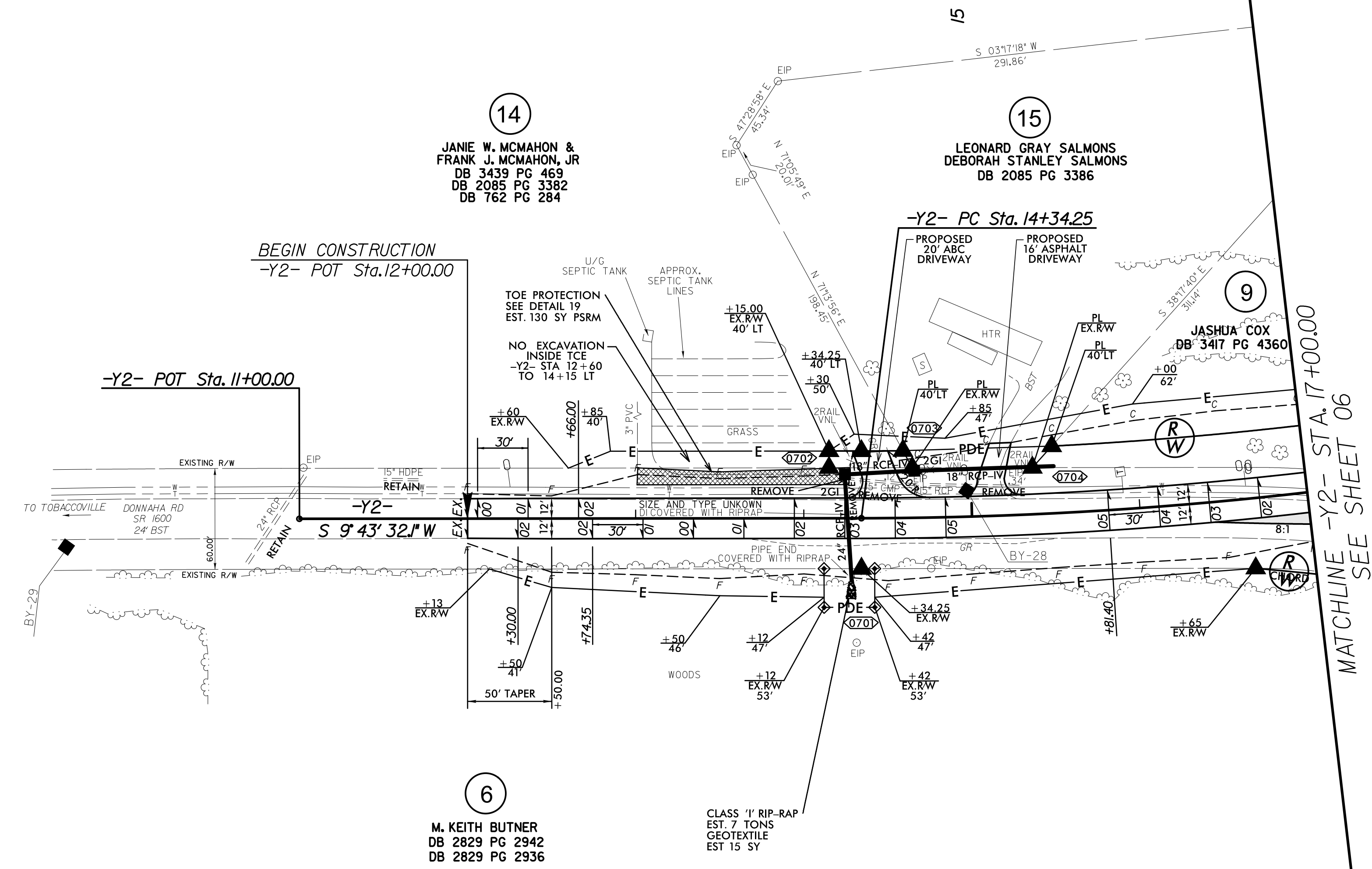
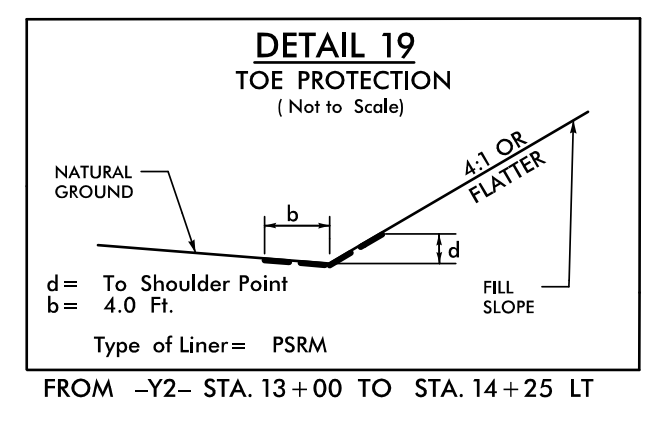
REVISIONS

3/19/2020
X:\NORTH CAROLINA\Roadway\Proj\B-5825\Roadway\Proj\B-5825_rdlj_esh_17.dgn
1/15/2020

-Y2-
PI Sta 15+83.03
 $\Delta = 7' 18" 25.5' (LT)$
 $D = 2' 27" 32.6'$
 $L = 297.15'$
 $T = 148.78'$
 $R = 2,330.00'$
 $SE = 0.05$
 $Lr = 150'$

NAD 83
NA 2011

PROJECT REFERENCE NO. B-5825		SHEET NO. 07	
ROADWAY DESIGN ENGINEER		HYDRAULICS ENGINEER	
3/19/2020 11:57 AM EDT		3/19/2020 8:57 AM PDT	
DOCUMENT NOT CONSIDERED FINAL UNLESS ALL SIGNATURES COMPLETED			
		TGS ENGINEERS 706 HILLSBOROUGH ST. SUITE 200 RALEIGH, NC 27603 PH (919) 773-8887 CORP. LICENSE NO.: C-0275	



MATCHLINE -Y2- STA. 17+00.00
SEE SHEET 06

SEE SHEET 10 FOR -Y2- PROFILE

DRIVE RADII ARE 10' UNLESS OTHERWISE NOTED