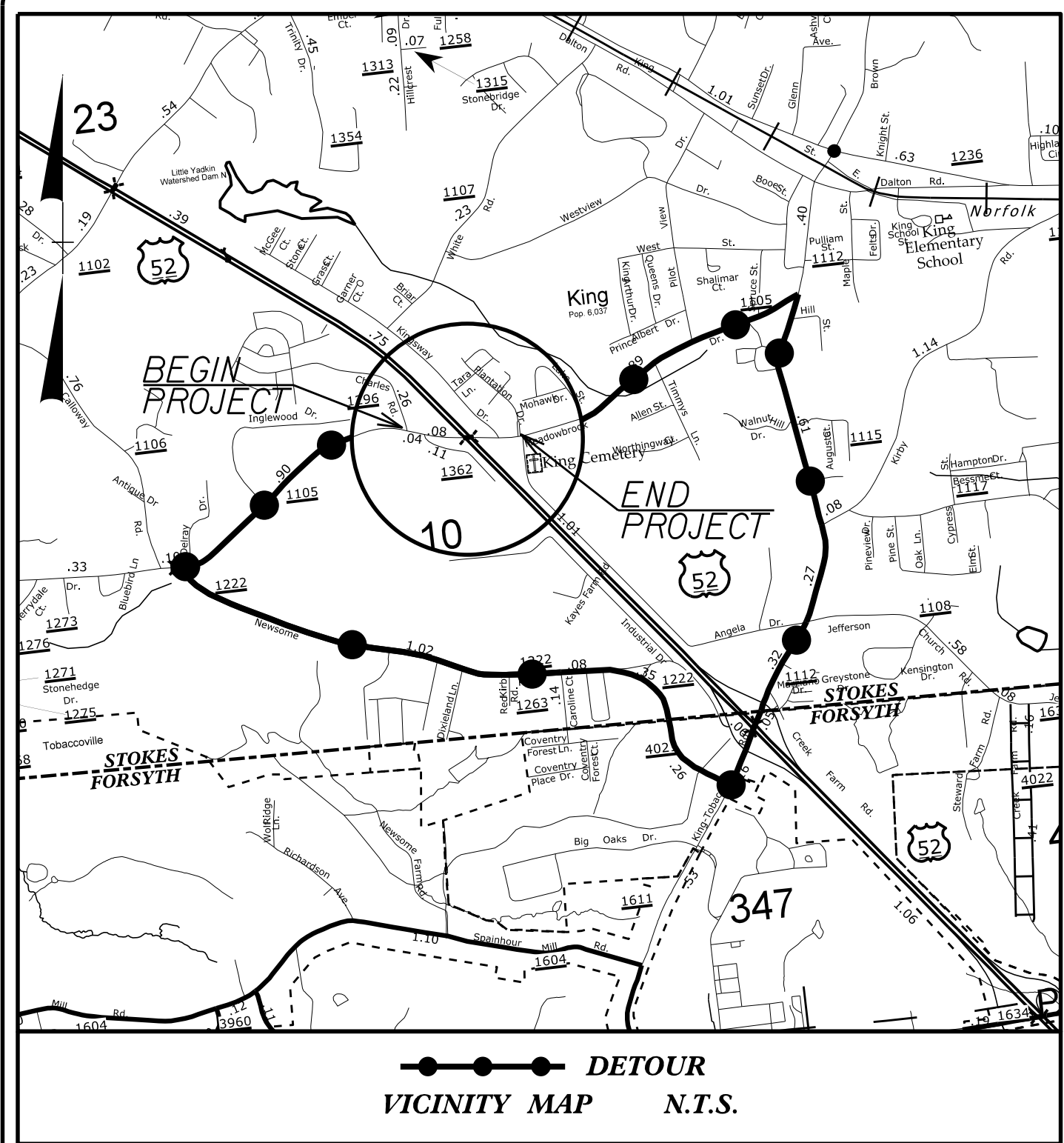


09_08/99

TIP PROJECT: BR-0047



STATE OF NORTH CAROLINA
DIVISION OF HIGHWAYS

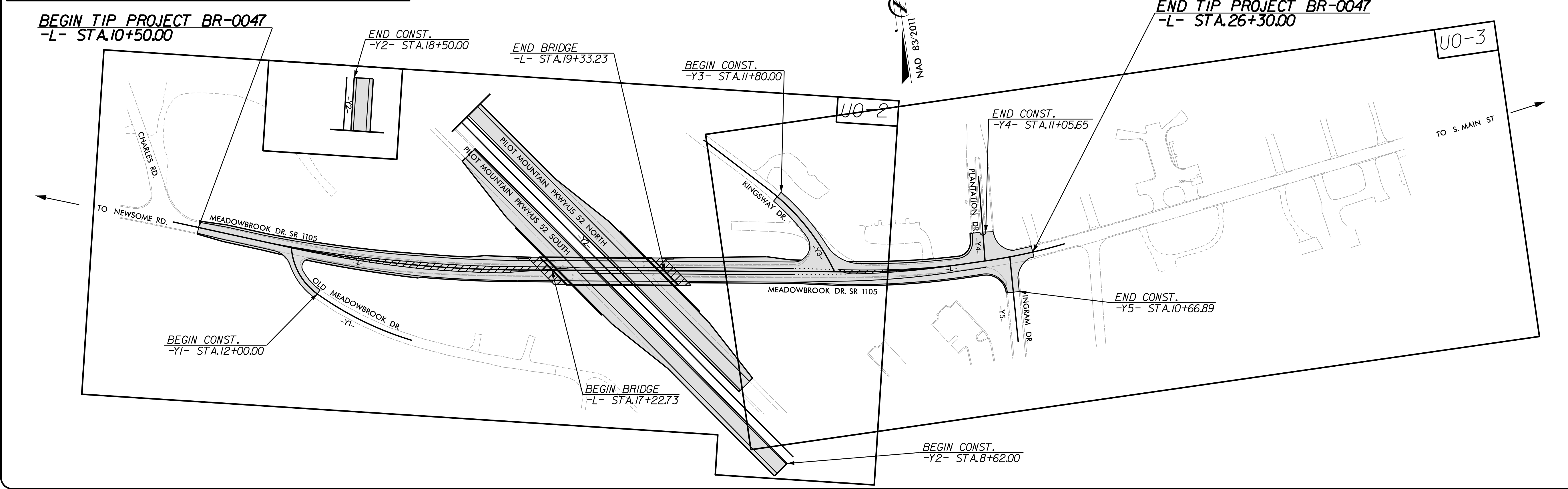
**UTILITIES BY OTHERS PLANS
STOKES COUNTY**

LOCATION: BRIDGE 10 ON SR 1105
(MEADOWBROOK DR.) OVER U.S. 52

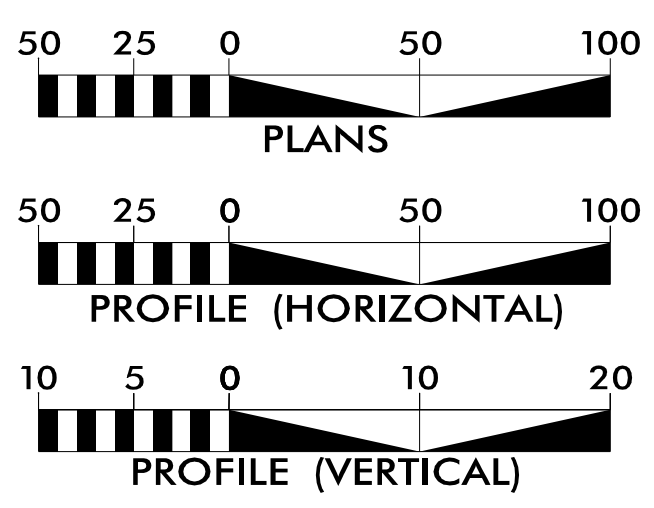
TYPE OF WORK: RELOCATION OF POWER, GAS AND
COMMUNICATION UTILITIES

T.I.P. NO.	SHEET NO.
BR-0047	UO-1

NOTE:
ALL UTILITY WORK SHOWN ON THIS SHEET WILL BE DONE BY OTHERS. NO PAYMENT WILL BE MADE TO THE CONTRACTOR FOR UTILITY WORK SHOWN ON THIS SHEET.



GRAPHIC SCALES



INDEX OF SHEETS

SHEET NO.:	DESCRIPTION:
UO-1	TITLE SHEET
UO-2 THRU UO-3	UO PLAN AND PROFILE SHEETS

UTILITY OWNERS WITH CONFLICTS

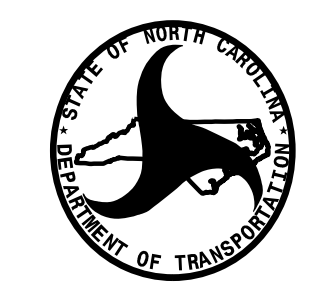
- (A) POWER DISTRIBUTION - DUKE ENERGY
- (B) GAS - PIEDMONT NATURAL GAS
- (C) COMMUNICATIONS - SPECTRUM, WINDSTREAM

PREPARED IN THE OFFICE OF:



11325 N COMMUNITY HOUSE RD. SUITE 260
CHARLOTTE, NC 28277

CHAD ROGERS, PE UTILITY PROJECT MANAGER
JIM CARLSON PROJECT UTILITY COORDINATOR



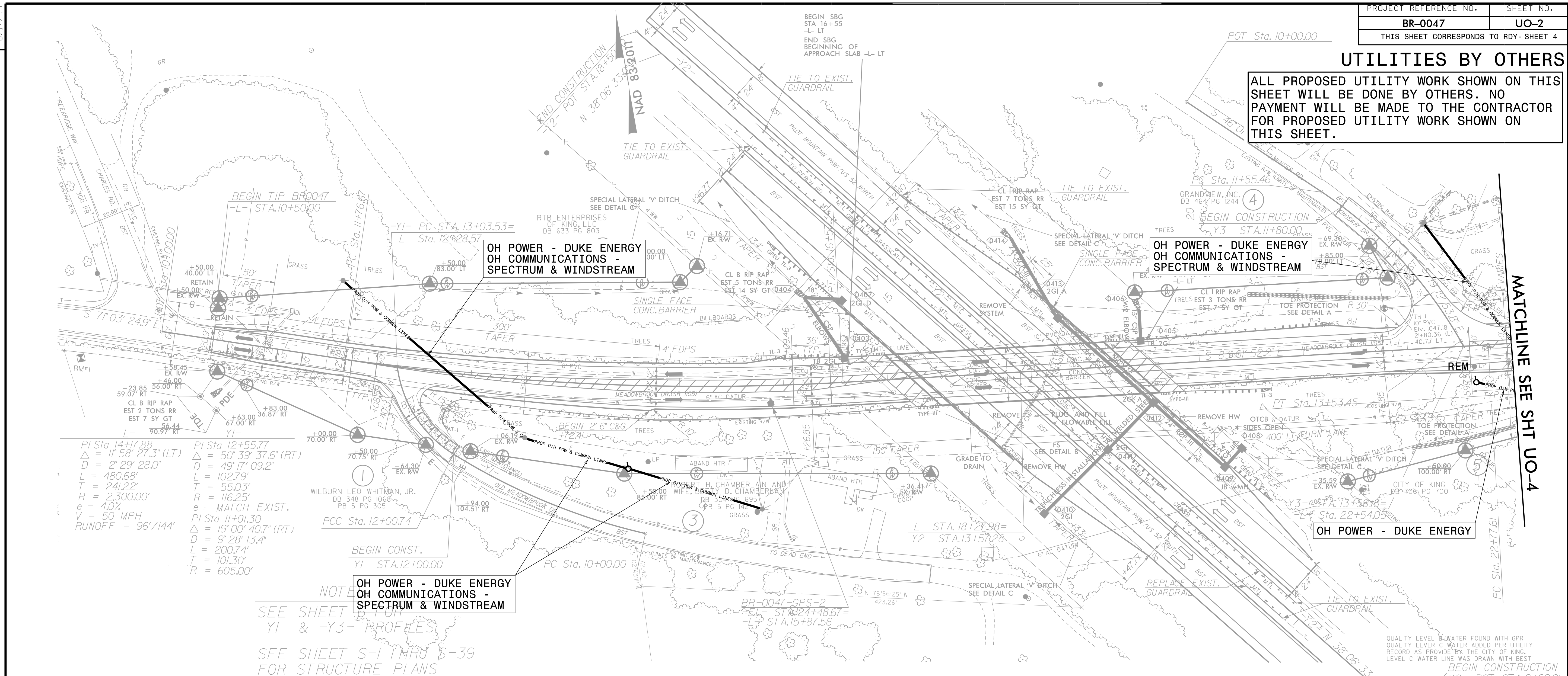
DIVISION OF HIGHWAYS
UTILITIES UNIT
1555 MAIL SERVICE CENTER
RALEIGH, NC 27699-1555
PHONE (919) 707-6609
FAX (919) 250-4151

TUCKER MARTIN, PE	UTILITIES REGIONAL ENGINEER
JON LOUGHRY	UTILITIES ENGINEER
DAYTON MARTIN	UTILITIES REGIONAL COORDINATOR
JON GAILLARD	UTILITIES COORDINATOR

4/20/2020
C:\BR0047\UTILITIES\UBO_TSH.dgn
2:47:45 PM

UTILITIES BY OTHERS

ALL PROPOSED UTILITY WORK SHOWN ON THIS SHEET WILL BE DONE BY OTHERS. NO PAYMENT WILL BE MADE TO THE CONTRACTOR FOR PROPOSED UTILITY WORK SHOWN ON THIS SHEET.



OH POWER - DUKE ENERGY
 OH COMMUNICATIONS - SPECTRUM & WINDSTREAM

OH POWER - DUKE ENERGY
 OH COMMUNICATIONS - SPECTRUM & WINDSTREAM

OH POWER - DUKE ENERGY
 OH COMMUNICATIONS - SPECTRUM & WINDSTREAM

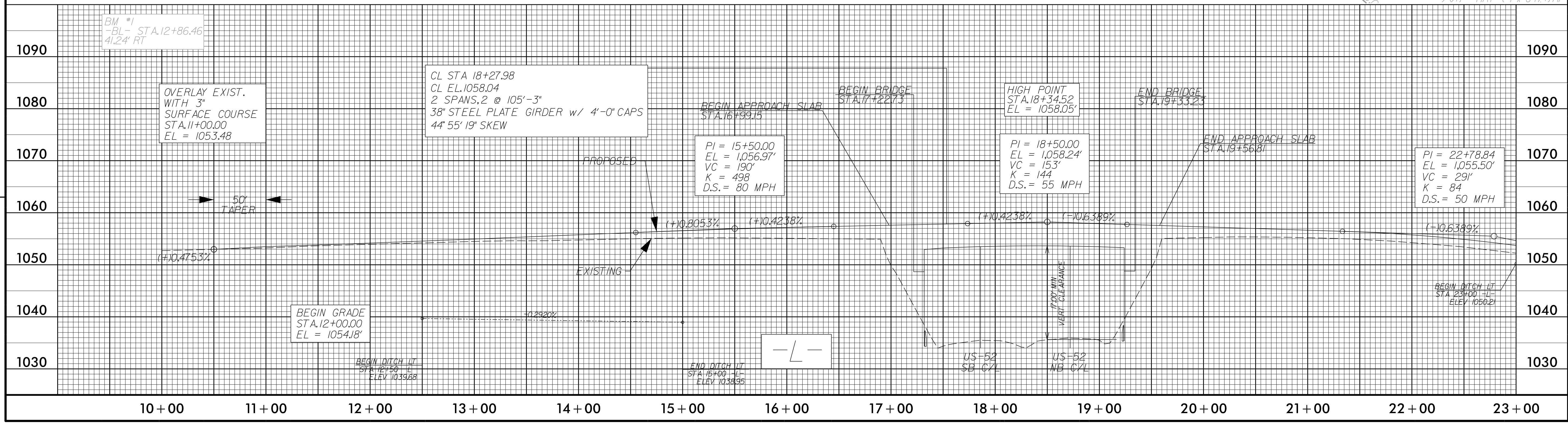
OH POWER - DUKE ENERGY

PI Sta 14+17.88
 $\Delta = 11' 58" 27.3" (LT)$
 $D = 2' 29" 28.0"$
 $L = 480.68'$
 $T = 241.22'$
 $R = 2,300.00'$
 $e = 4.07'$
 $V = 50 \text{ MPH}$
 $RUNOFF = 96'/144'$

PI Sta 12+55.77
 $\Delta = 50' 39" 37.6" (RT)$
 $D = 49' 17" 09.2"$
 $L = 102.79'$
 $T = 55.03'$
 $R = 116.25'$
 $e = \text{MATCH EXIST.}$

PI Sta 11+01.30
 $\Delta = 19' 00" 40.7" (RT)$
 $D = 9' 28" 13.4"$
 $L = 200.74'$
 $T = 101.30'$
 $R = 605.00'$

NOTE
 SEE SHEET S-I THRU S-39
 FOR STRUCTURE PLANS



REVISIONS

MATCHLINE SEE SHT UO-4

8.17.99

