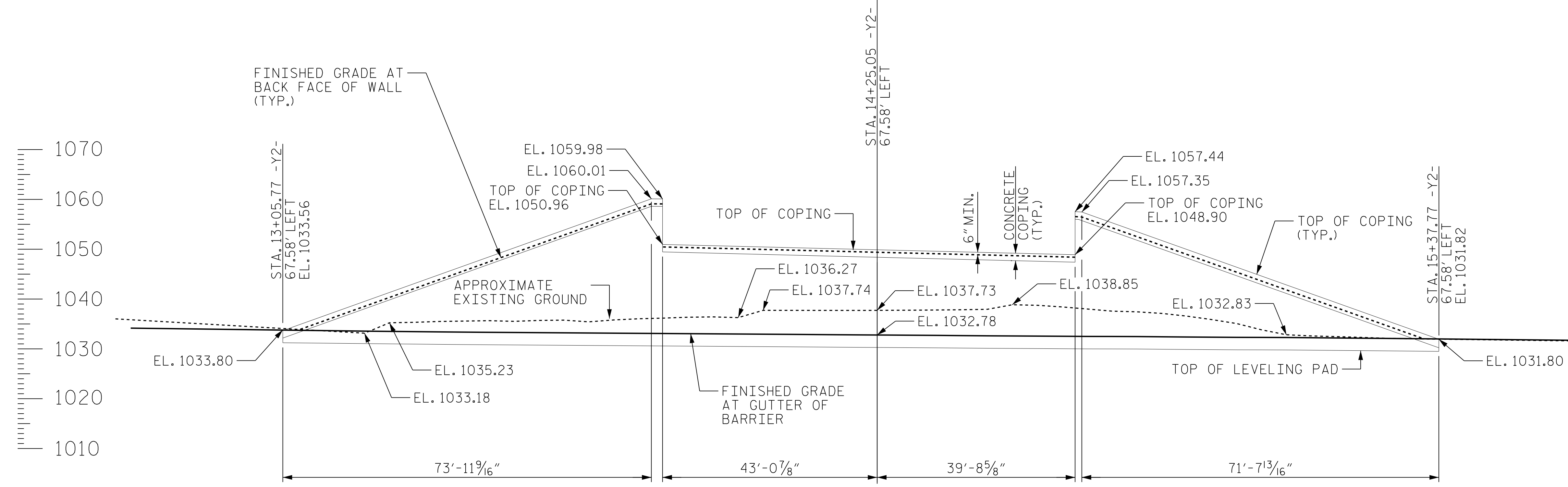
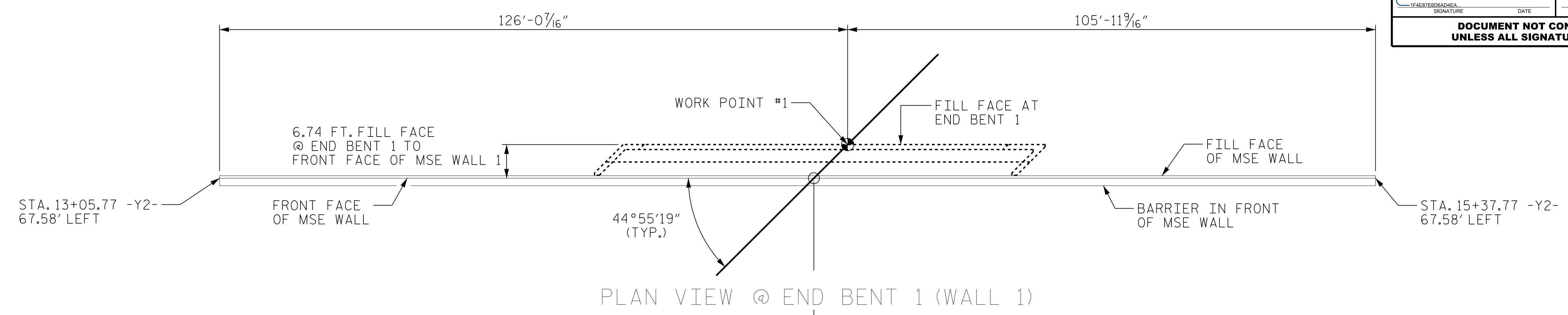


GEOTECHNICAL ENGINEER
 ENGINEER
 NORTH CAROLINA PROFESSIONAL SEAL 0029869
 SHANE C. CLARK
 DocuSigned by: 4/27/2020
 SIGNATURE DATE SIGNATURE DATE
DOCUMENT NOT CONSIDERED FINAL UNLESS ALL SIGNATURES COMPLETED



MSE WALL QUANTITY (SQUARE FEET)	
MSE RETAINING WALL NO. 1	3,850 SF
* EST. QTY INCLUDES 2 FT EMBEDMENT	

PROJECT NO.: 67047 (BR-0047)
 STOKES COUNTY
 STATION: 13+57.28 -Y2-
 SHEET 1 OF 5

NORTH CAROLINA
 DEPARTMENT OF TRANSPORTATION
 DIVISION OF HIGHWAYS
**GEOTECHNICAL
 ENGINEERING UNIT**

REVISIONS						SHEET NO. W-1
NO.	BY	DATE	NO.	BY	DATE	
1			3			
2			4			

PREPARED BY: SCC	DATE: 4/20/20
REVIEWED BY: ENW	DATE: 4/24/20