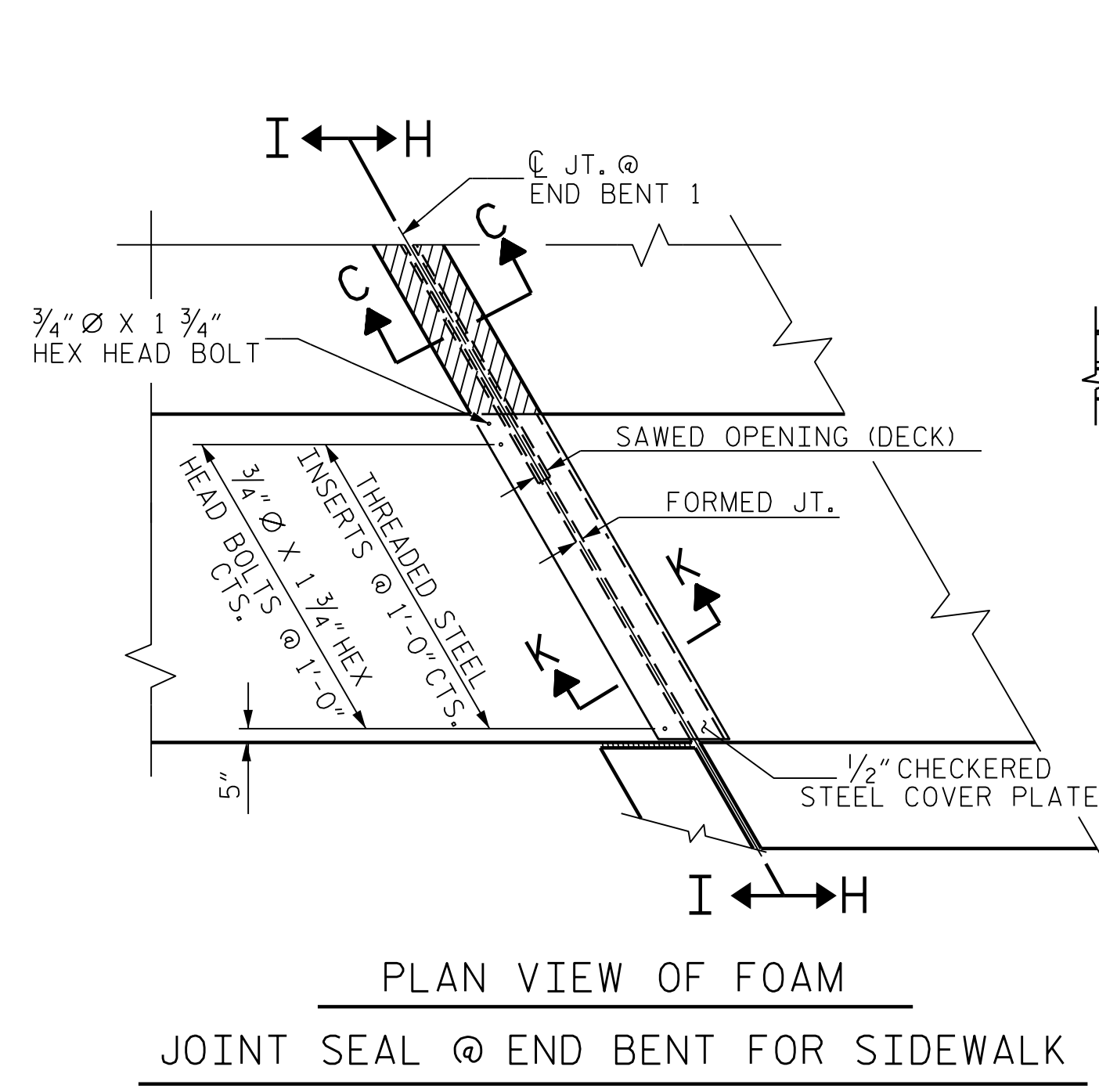
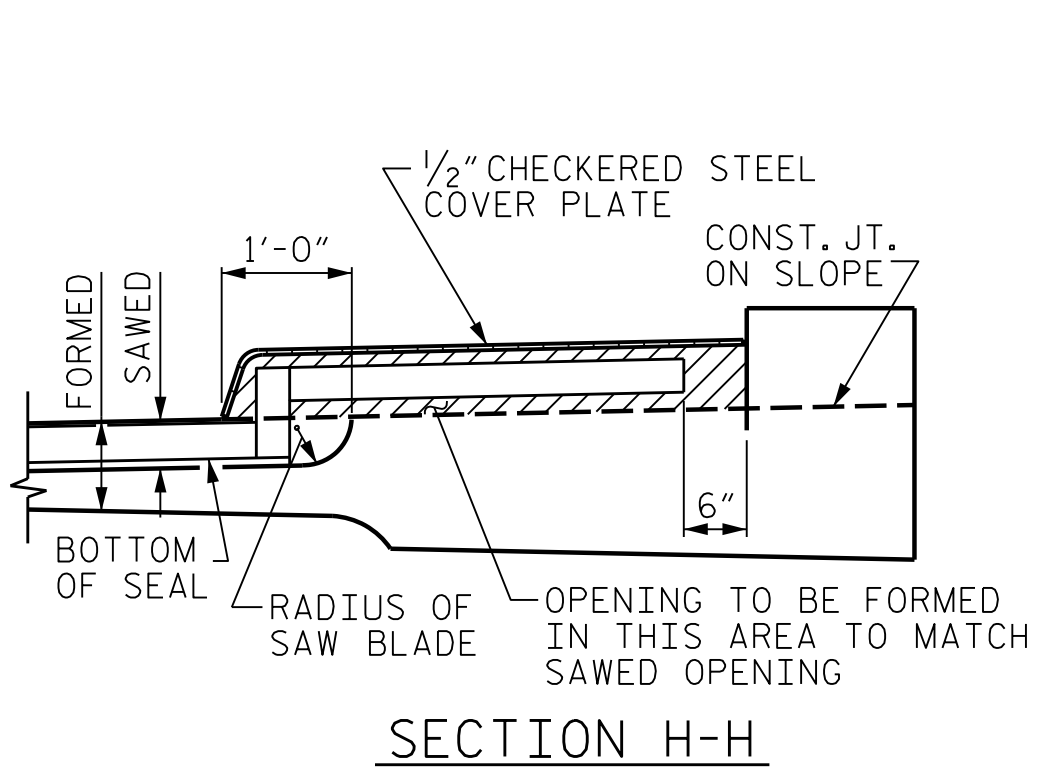


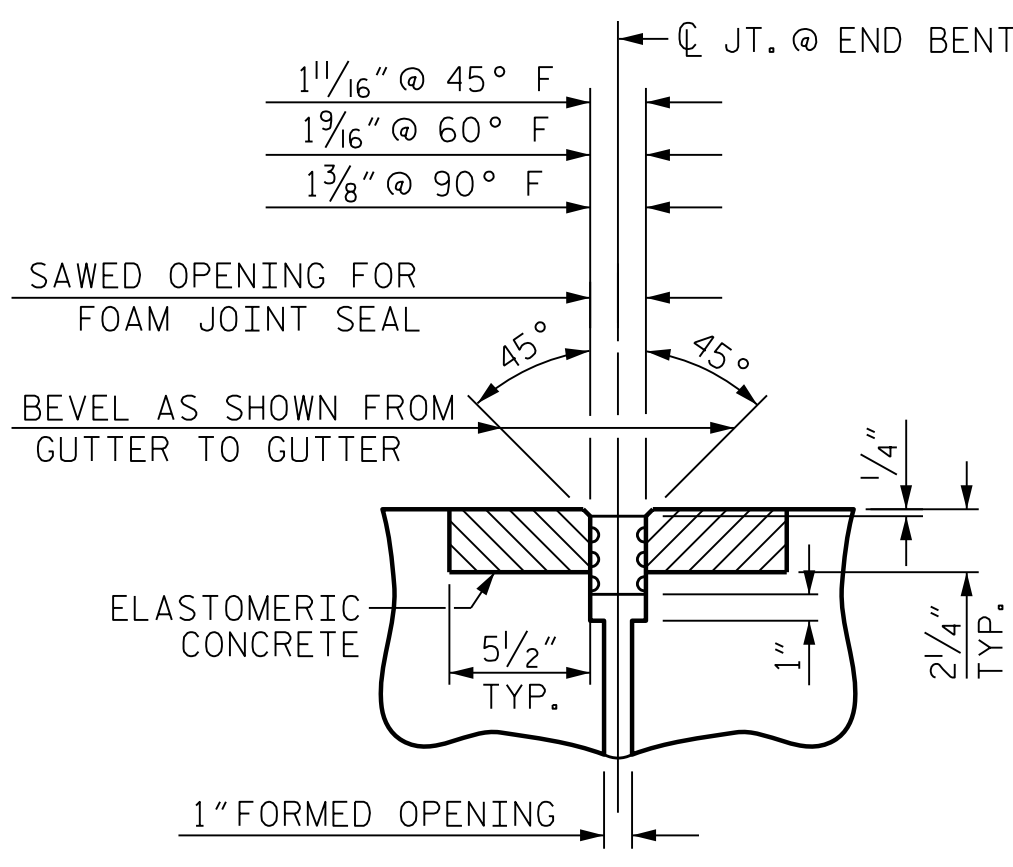
P:\Voorl\sh-pw\benley.com\proj\sh-pw\Documents\Surface Transportation\NC DOT BR_0047\Project Design\Structures\Drawings\FINAL\400_079_BRO047_SMLU_AS_039_08400
 BR_0047\Project Design\Structures\Drawings\FINAL\400_079_BRO047_SMLU_AS_039_08400
 4/8/2020 3:02:19 PM



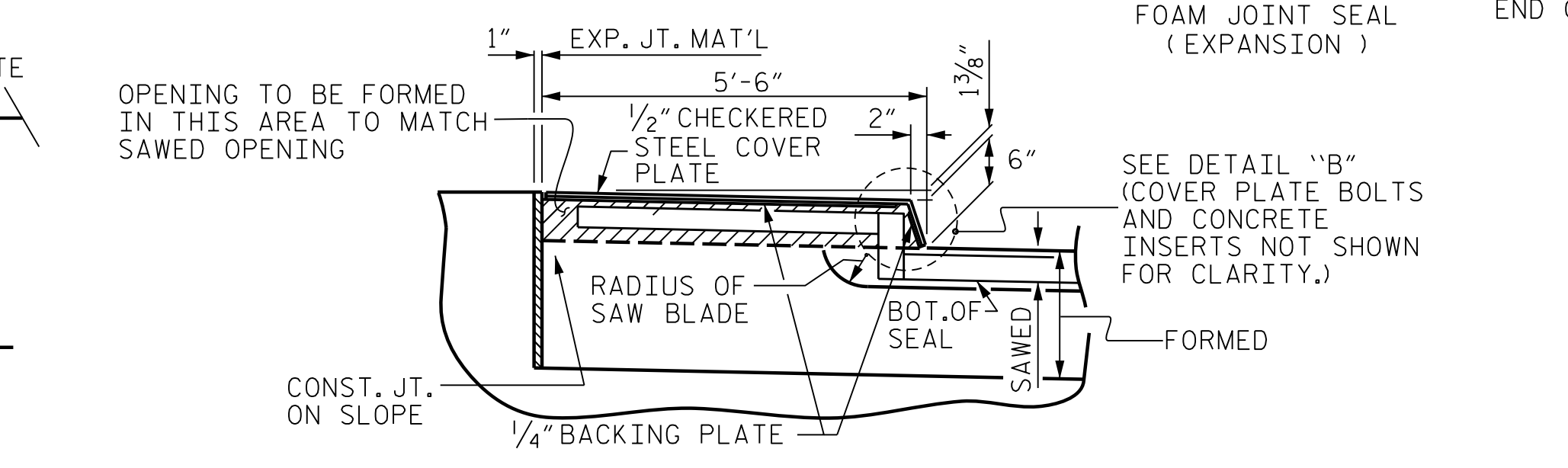
PLAN VIEW OF FOAM JOINT SEAL @ END BENT FOR SIDEWALK



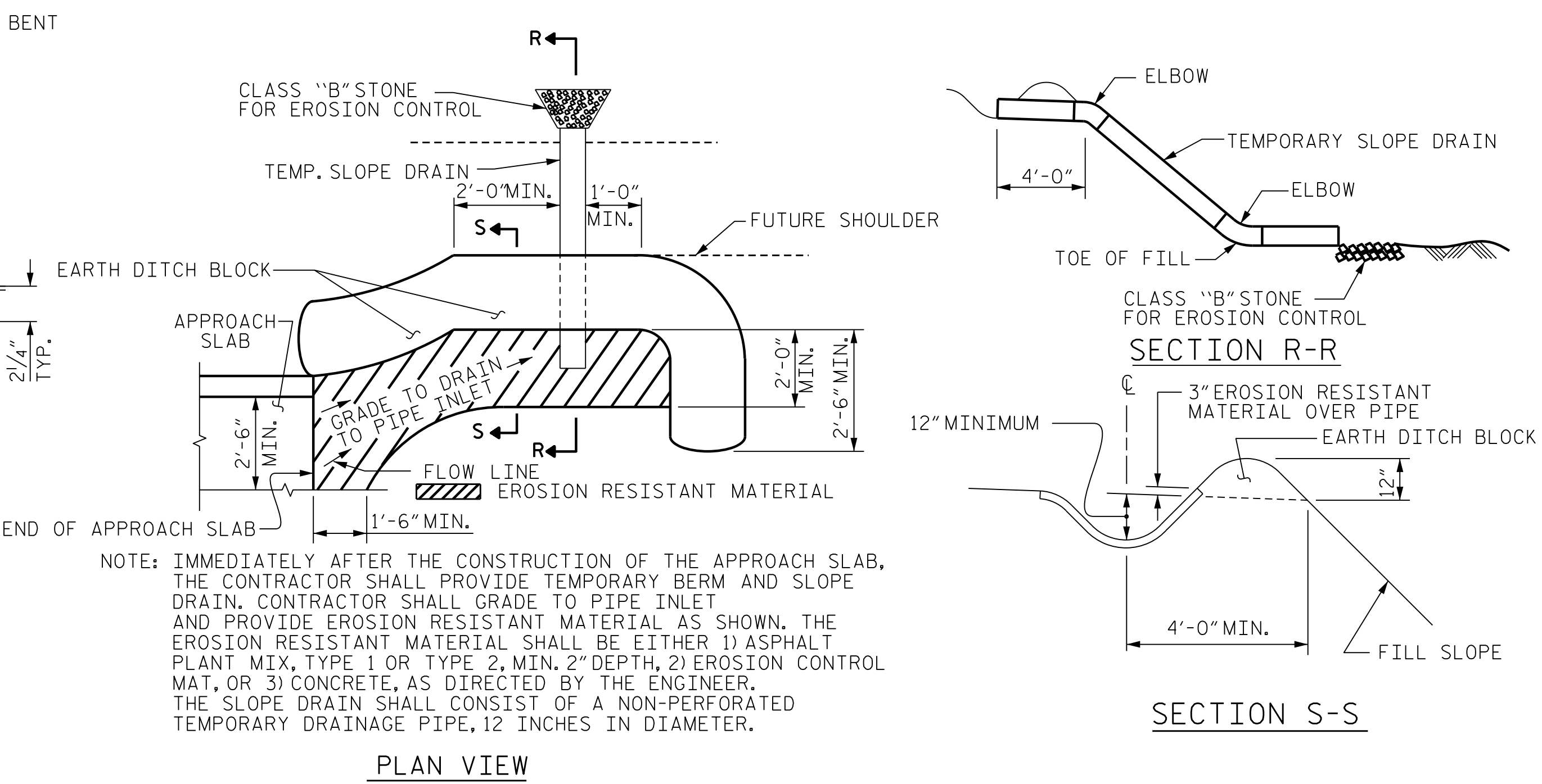
SECTION H-H



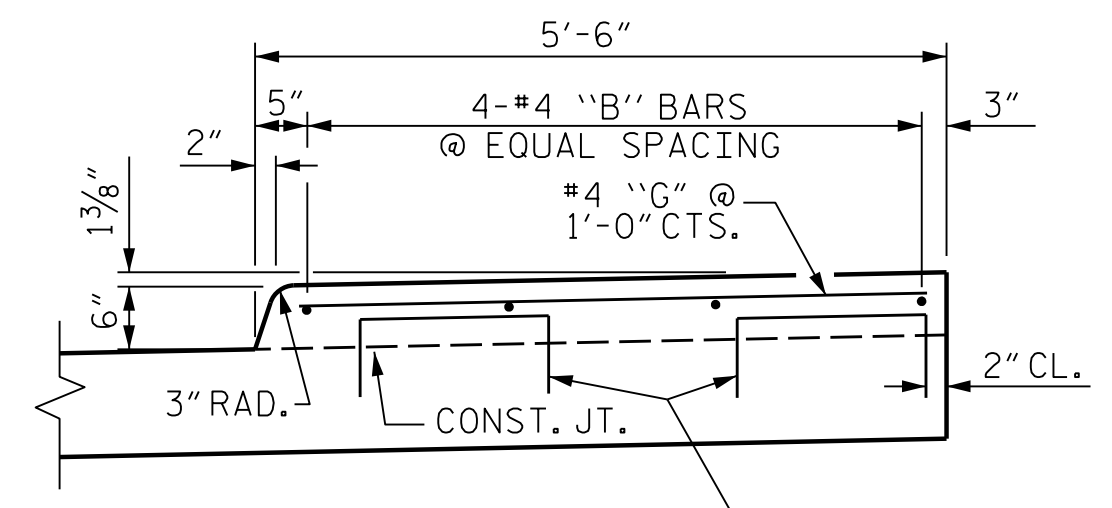
SECTION C-C
FOAM JOINT SEAL (EXPANSION)



SECTION I-I



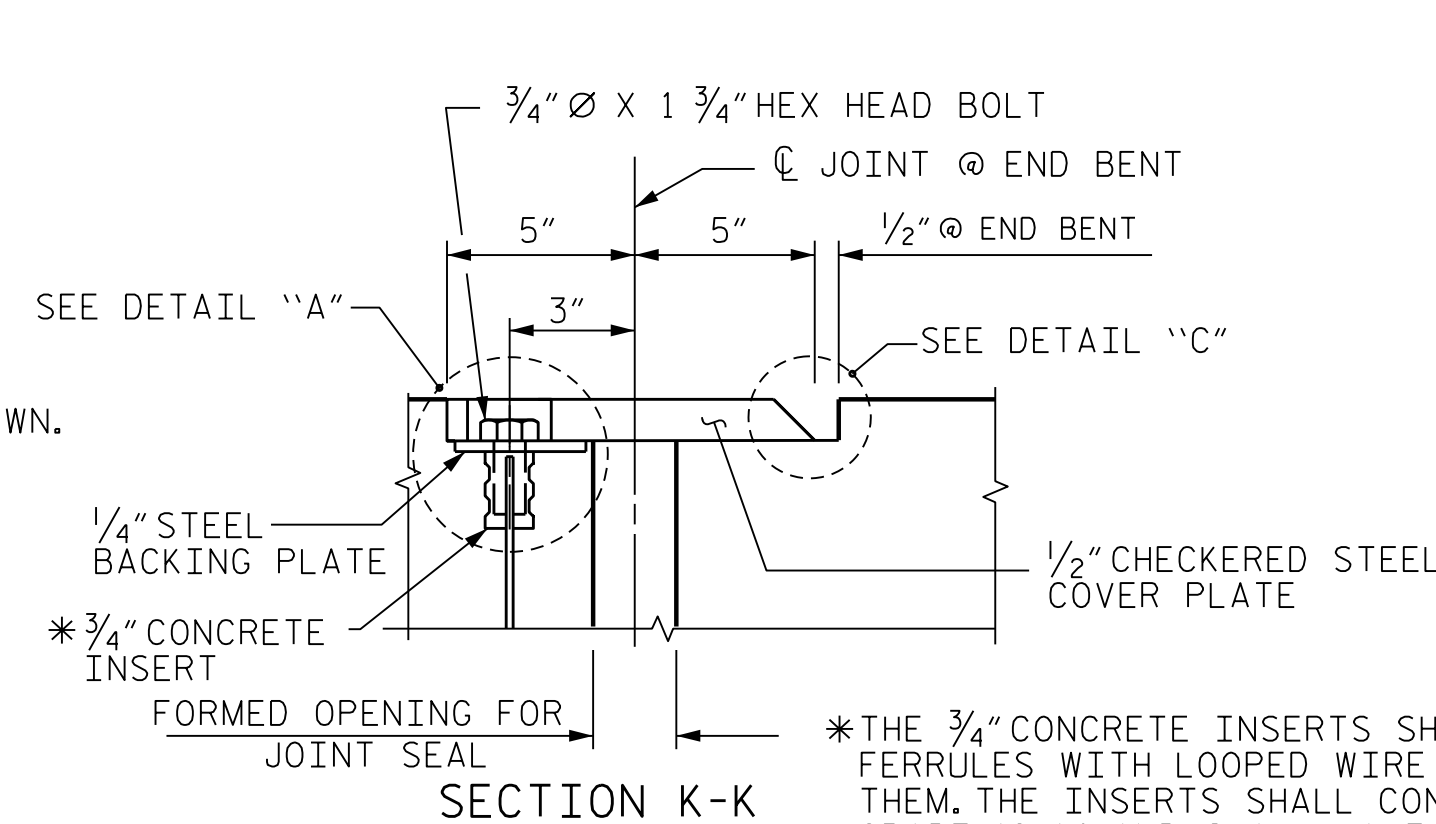
TEMPORARY BERM AND SLOPE DRAIN DETAILS
(TO BE USED WHEN SHOULDER BERM GUTTER IS REQUIRED)



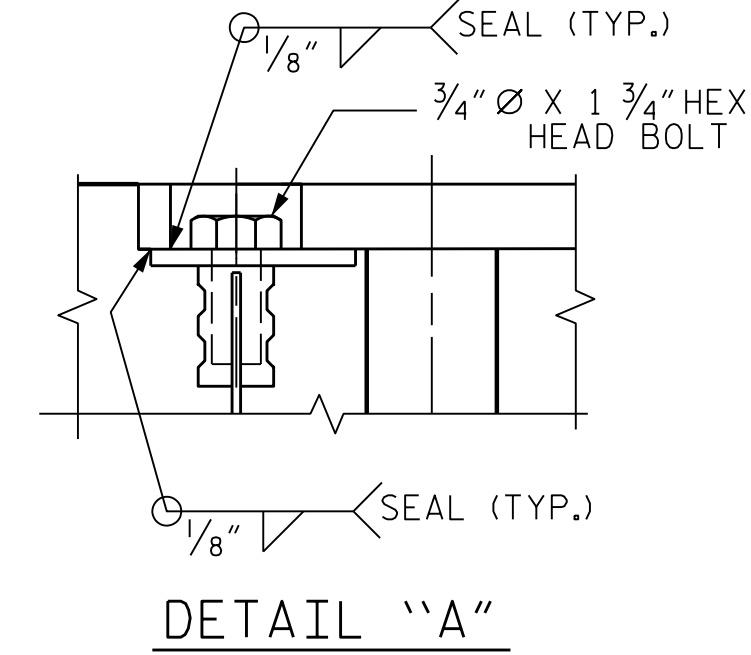
SECTION M-M
SIDEWALK DETAILS

ELASTOMERIC CONCRETE	
END BENT NO.	ELASTOMERIC CONCRETE * (CU. FT.)
1	12.7
2	12.7
TOTAL	25.4

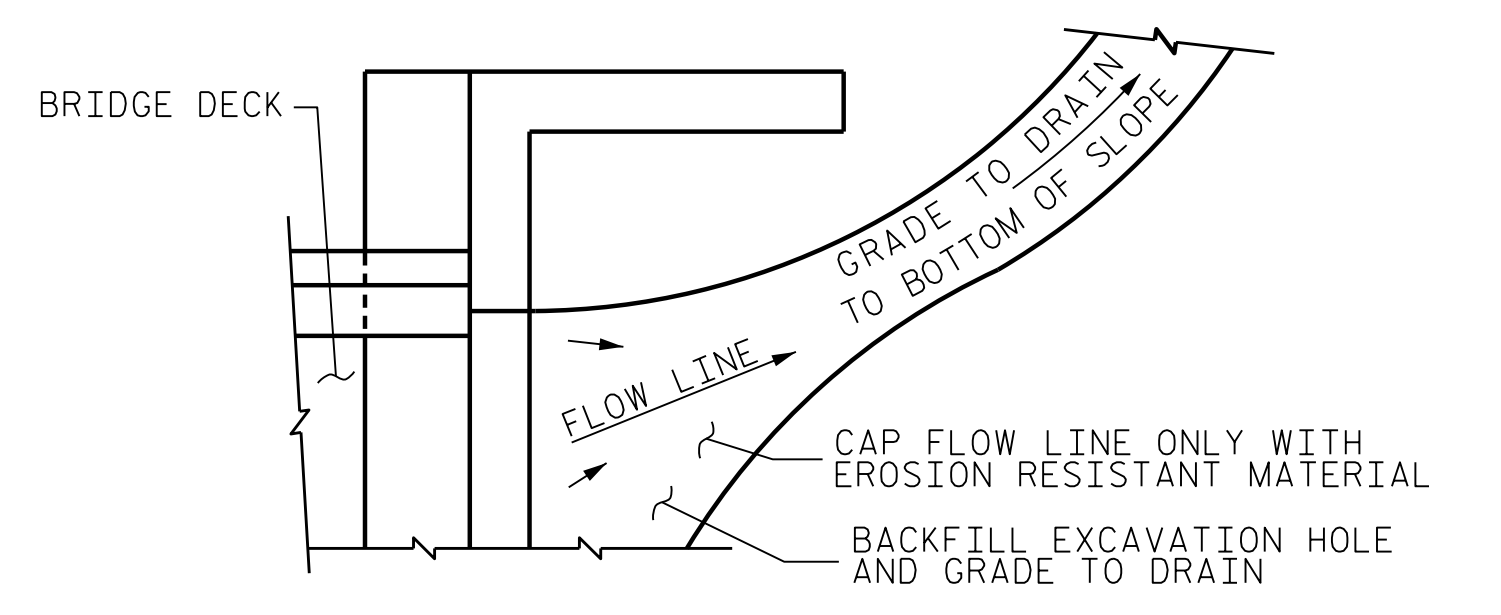
* BASED ON THE MINIMUM BLOCKOUT SHOWN.



SECTION K-K

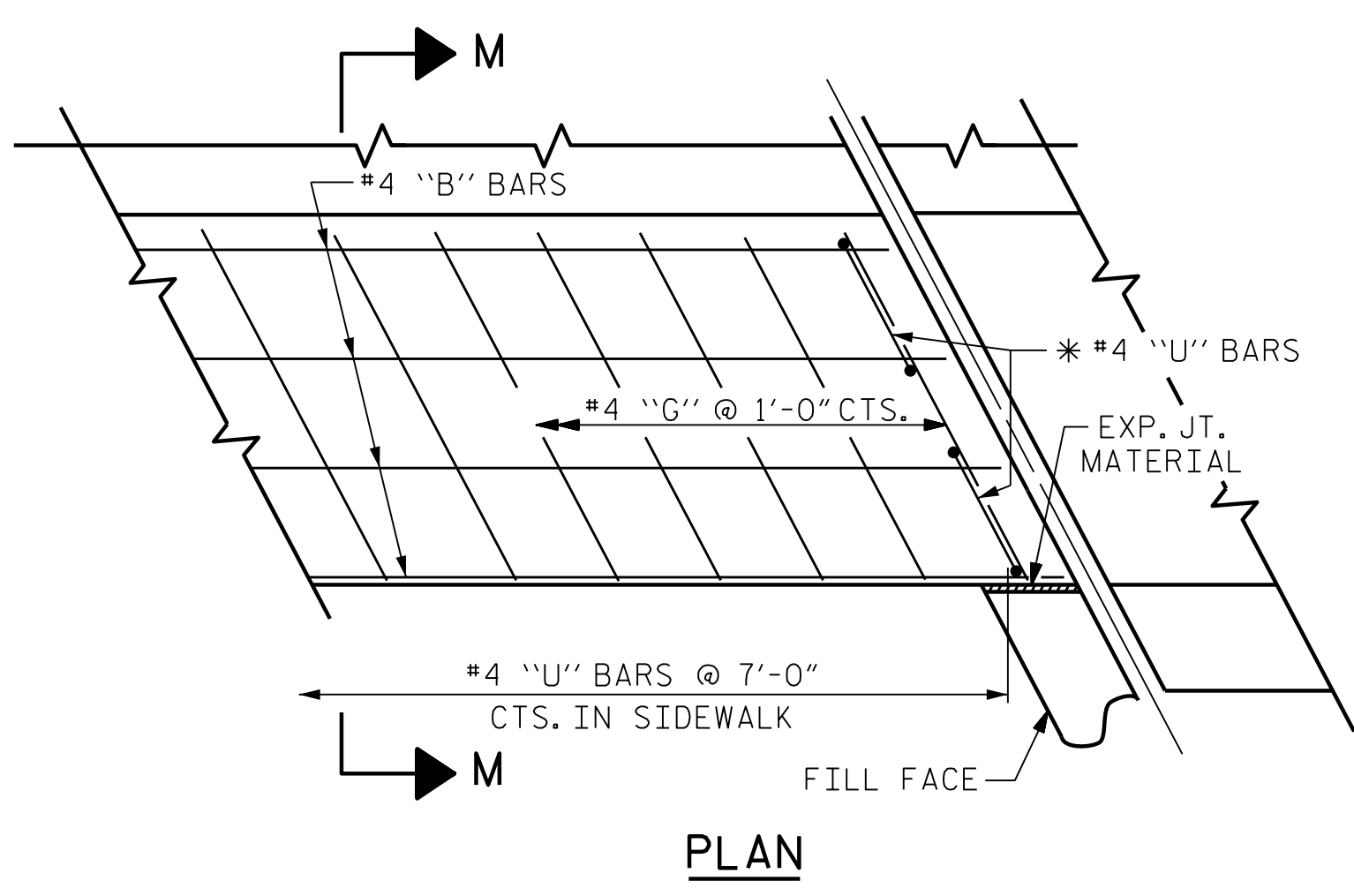


DETAIL 'A'



NOTE: IF THE APPROACH SLAB IS NOT CONSTRUCTED IMMEDIATELY AFTER THE BACKFILLING OF THE END BENT EXCAVATION, GRADE TO DRAIN TO THE BOTTOM OF THE SLOPE AND PROVIDE EROSION RESISTANT MATERIAL, SUCH AS FIBERGLASS ROVING OR AS DIRECTED BY THE ENGINEER TO PREVENT SOIL EROSION AND TO PROTECT THE AREA ADJACENT TO THE STRUCTURE. THE CONTRACTOR WILL BE REQUIRED TO REMOVE THESE MATERIALS PRIOR TO CONSTRUCTION OF THE APPROACH SLAB.

TEMPORARY DRAINAGE DETAIL



PLAN

* THESE BARS ARE TO BE PLACED AFTER THE SAWING OF THE JOINT. THE HOLES SHALL BE DRILLED AND THE DOWELS GROUTED INTO PLACE.

DETAILS OF SIDEWALK ON APPROACH SLAB

THE STEEL PLATES SHALL CONFORM TO AASHTO M270 GRADE 36 OR APPROVED EQUAL. AFTER FABRICATION, THE PLATES SHALL BE COMMERCIALY BLAST CLEANED AND EITHER COATED WITH A MINIMUM THICKNESS OF 4 MILS (DRY) OF ZINC-RICH PAINT, GALVANIZED OR METALLIZED TO A MINIMUM THICKNESS OF 6 MILS IN ACCORDANCE WITH THE STANDARD SPECIFICATIONS. FOR THERMAL SPRAYED COATINGS (METALLIZATION), SEE SPECIAL PROVISIONS.

THE 3/4" DIAMETER HEX HEAD BOLTS SHALL CONFORM TO ASTM F593 ALLOY 304 STAINLESS STEEL.

NO SEPARATE PAYMENT WILL BE MADE FOR FURNISHING AND INSTALLING THE COVER PLATE. THE ENTIRE COST OF THIS WORK SHALL BE INCLUDED IN THE LUMP SUM PRICE FOR "FOAM JOINT SEALS".

ASSEMBLED BY : G.C. MORRIS	DATE : 7/19
CHECKED BY : W.S. ARAFAT	DATE : 8/19
DRAWN BY : FCJ 11/88	REV. 6/13 MAA/GM
CHECKED BY : ARB 11/88	REV. 12/17 MAA/THC
	REV. 5/18 MAA/THC



DOCUMENT NOT CONSIDERED FINAL UNLESS ALL SIGNATURES COMPLETED

PARRISH & PARTNERS
 Parrish and Partners of North Carolina, PLLC
 421 Fayetteville St., #1100
 Raleigh, NC 27601
 NC License #P-1212

PROJECT NO. BR-0047
 STOKES COUNTY
 STATION: 18+27.98 -L-

SHEET 2 OF 2
 DEPARTMENT OF TRANSPORTATION
 RALEIGH

BRIDGE APPROACH SLAB DETAILS

REVISIONS						SHEET NO.
NO.	BY:	DATE:	NO.	BY:	DATE:	S-39
1			3			TOTAL SHEETS 39
2			4			