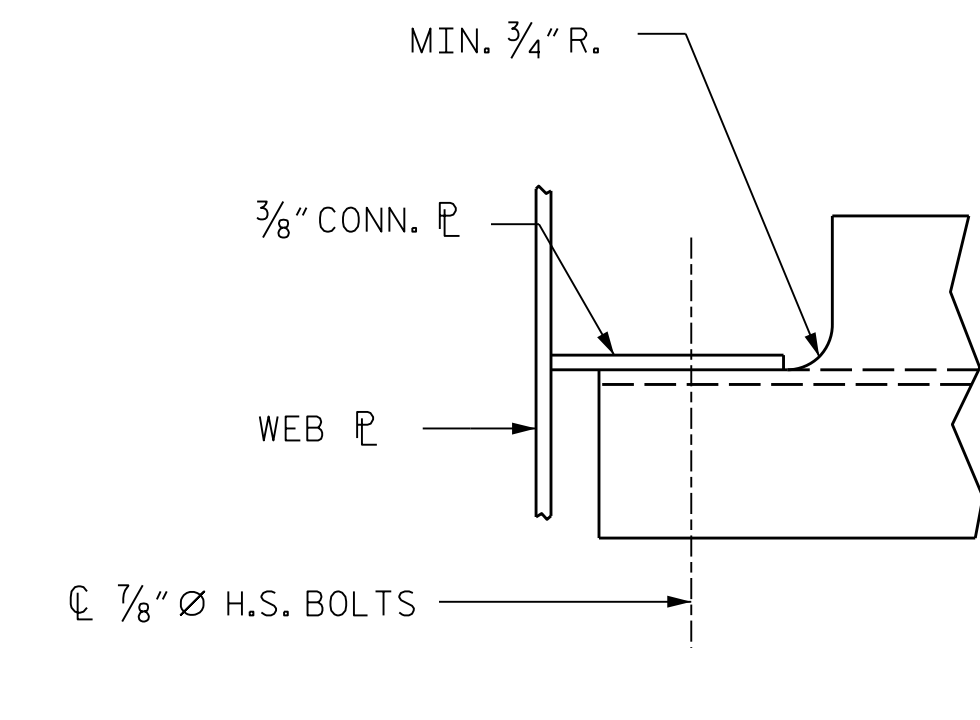
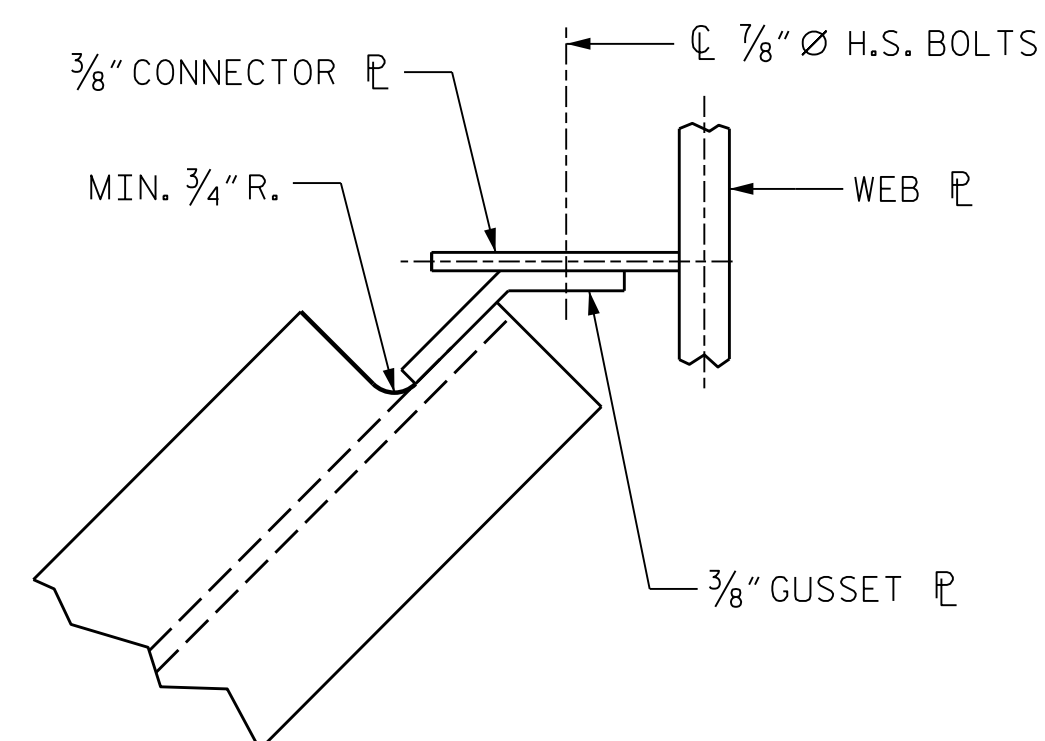
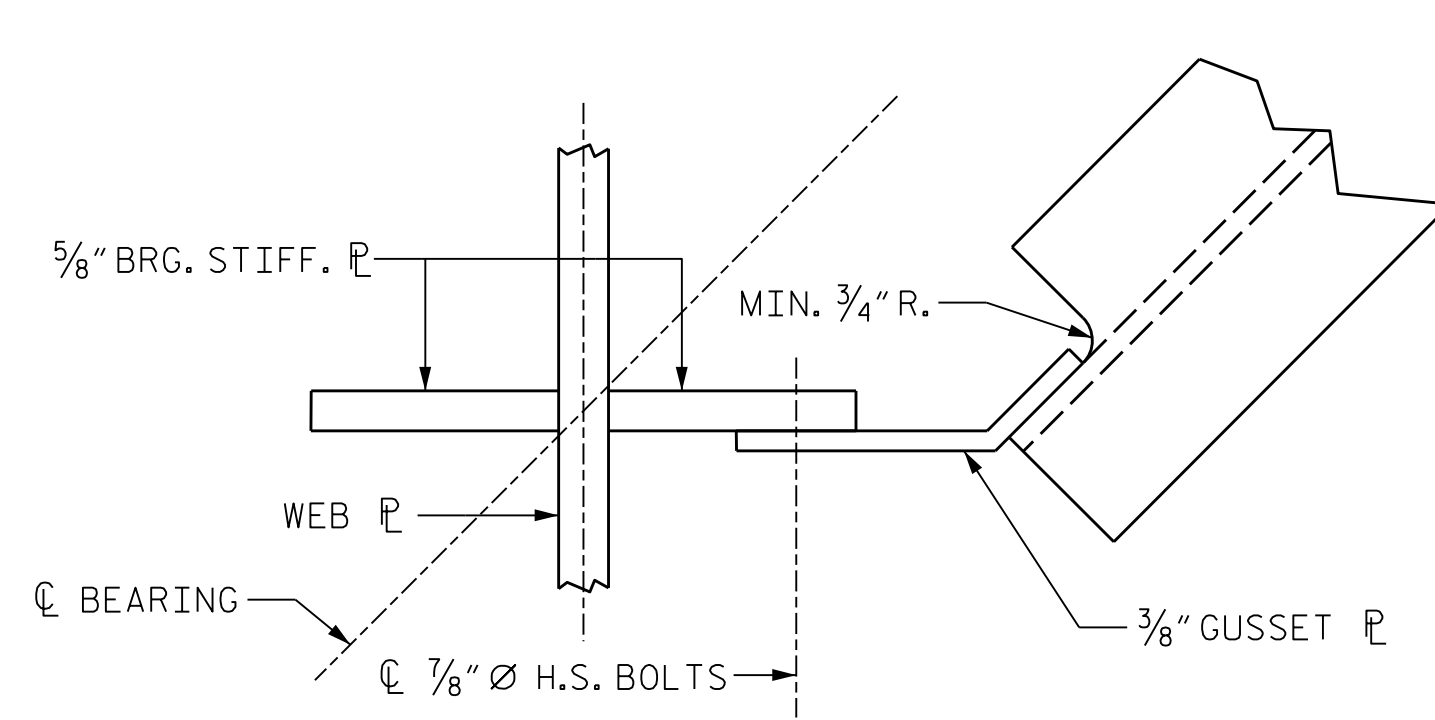
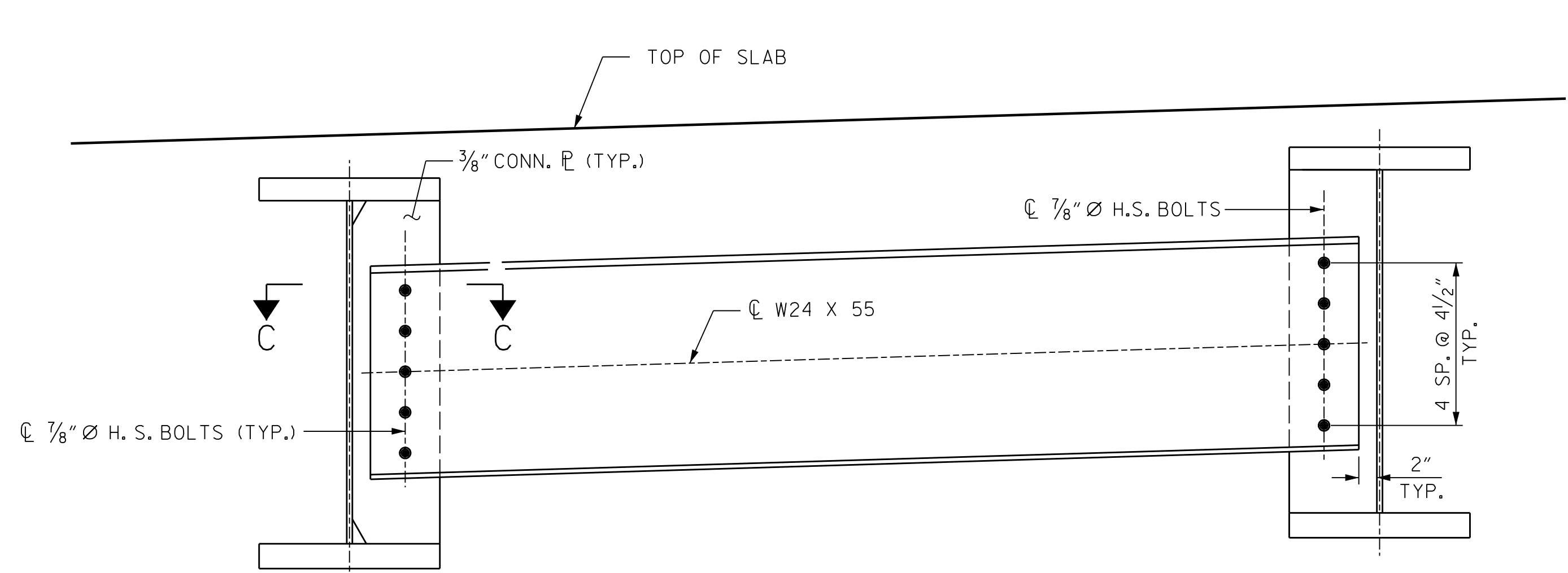
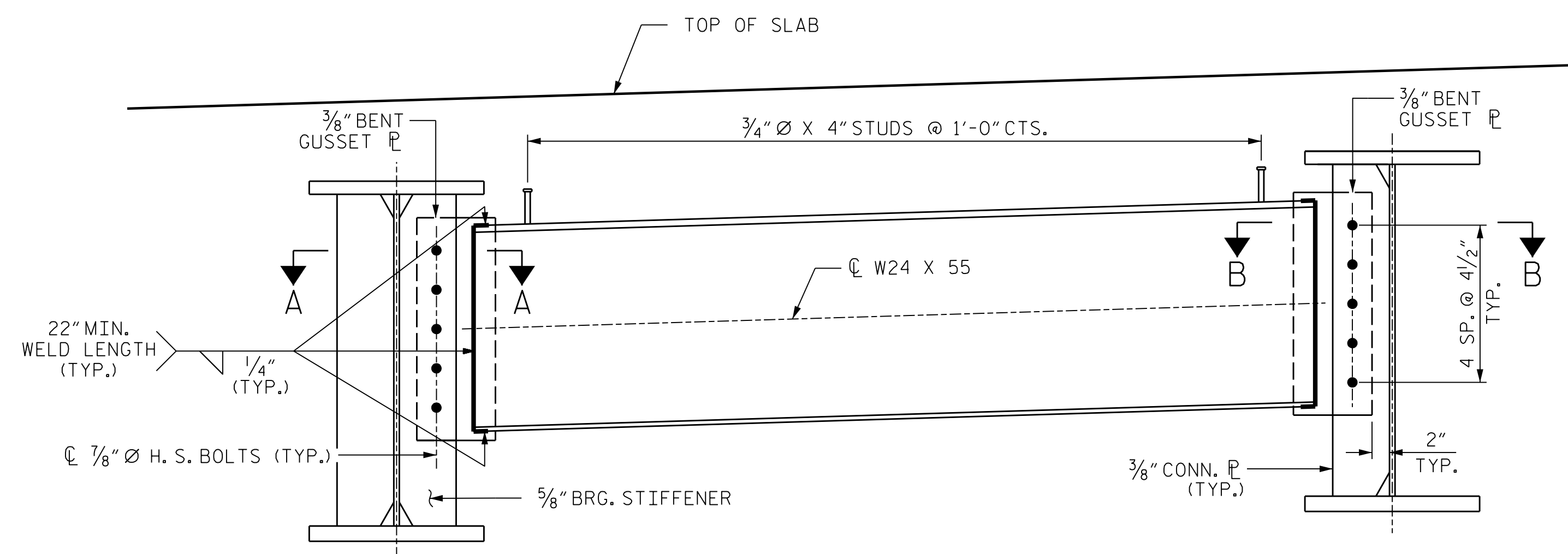


pw:\parrish-pw\entire\parrish-pw\Documents\Surface Transportation\NC001 BR\_0047\Project Design\Structures\Drawings\FINAL\400.027\_BR0047\_SML SS.013\_084010  
 4/8/2020 2:27:03 PM



SECTION A-A

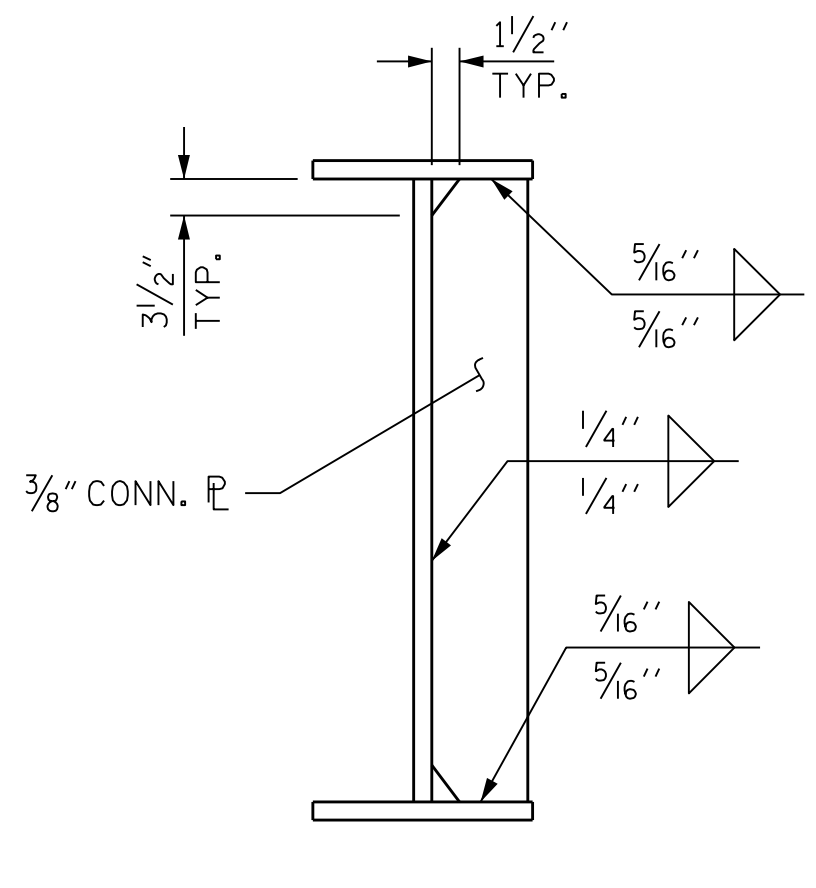
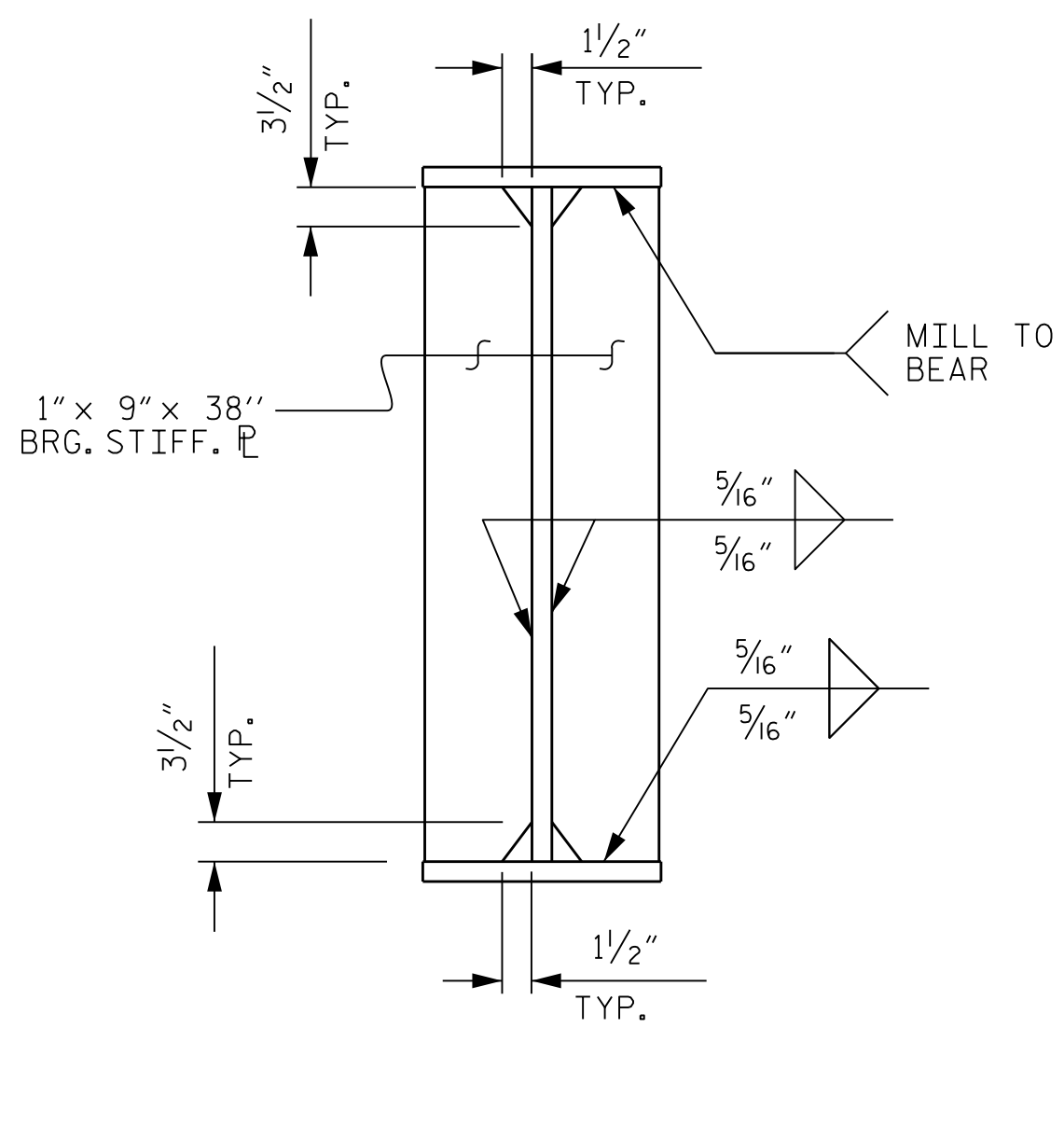
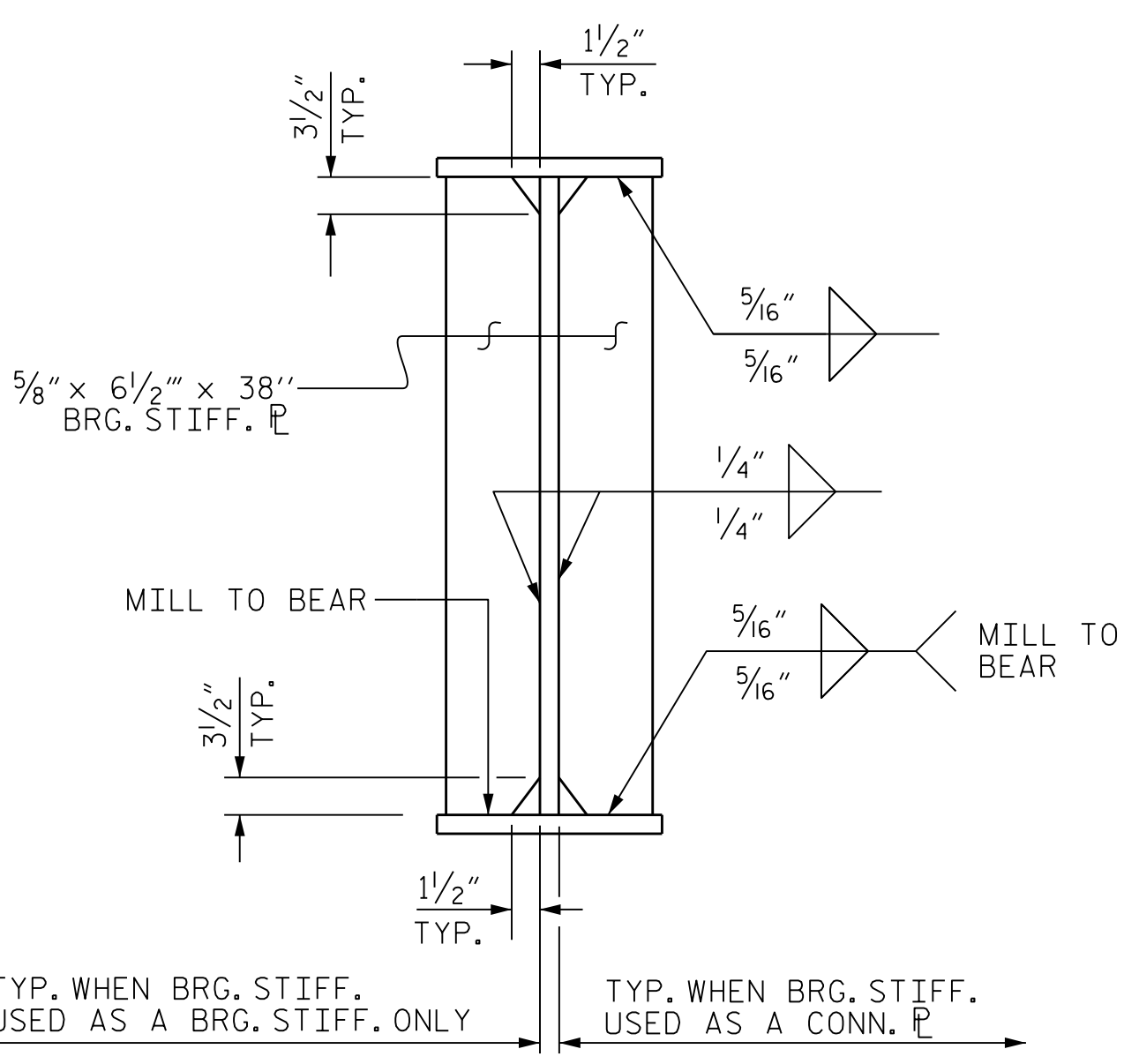
SECTION B-B

SECTION C-C

**TYPICAL END BENT DIAPHRAGM - D1**

END BENT 1 SHOWN, END BENT 2 SIMILIAR.

**TYPICAL INTERMEDIATE DIAPHRAGM - D2**



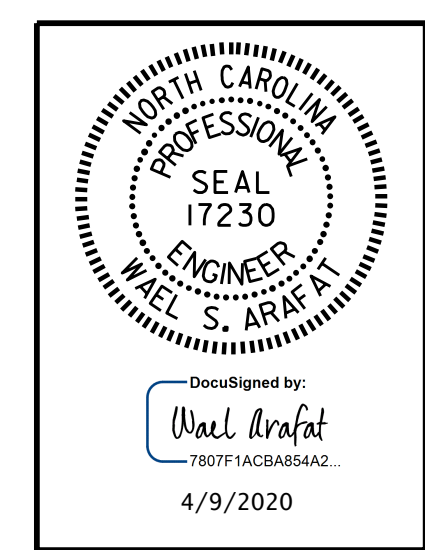
**BEARING STIFFENER**  
(END BENTS)

**BEARING STIFFENER**  
(BENT)

**CONNECTOR PLATE**

**NOTES**

FABRICATORS SHALL DETAIL DIAPHRAGM MEMBERS AND CONNECTIONS FOR FULL DEAD LOAD FIT UP. GIRDERS SHALL BE PLUMB AFTER THE FULL AMOUNT OF DEAD LOAD IS APPLIED.  
 BEARING STIFFENER, WHEN USED AS A CONNECTOR PLATE, MAY REQUIRE COPING IF WIDER THAN BOTTOM FLANGE.



DOCUMENT NOT CONSIDERED FINAL UNLESS ALL SIGNATURES COMPLETED

PROJECT NO. BR-0047  
STOKES COUNTY  
 STATION: 18+27.98 -L-

SHEET 2 OF 4  
 STATE OF NORTH CAROLINA  
 DEPARTMENT OF TRANSPORTATION  
 RALEIGH  
 SUPERSTRUCTURE  
**STRUCTURAL STEEL DETAILS**

DRAWN BY : G.C. MORRIS DATE : 07-19  
 CHECKED BY : W.S. ARAFAT DATE : 11-19  
 DESIGN ENGINEER OF RECORD: O. PUIGCERVER DATE : 09-19

**PARRISH & PARTNERS**  
 Parrish and Partners of North Carolina, PLLC  
 421 Fayetteville St., #1100  
 Raleigh, NC 27601  
 NC License #P-1212

REVISIONS						SHEET NO.
NO.	BY:	DATE:	NO.	BY:	DATE:	S-13
1			3			TOTAL SHEETS
2			4			39