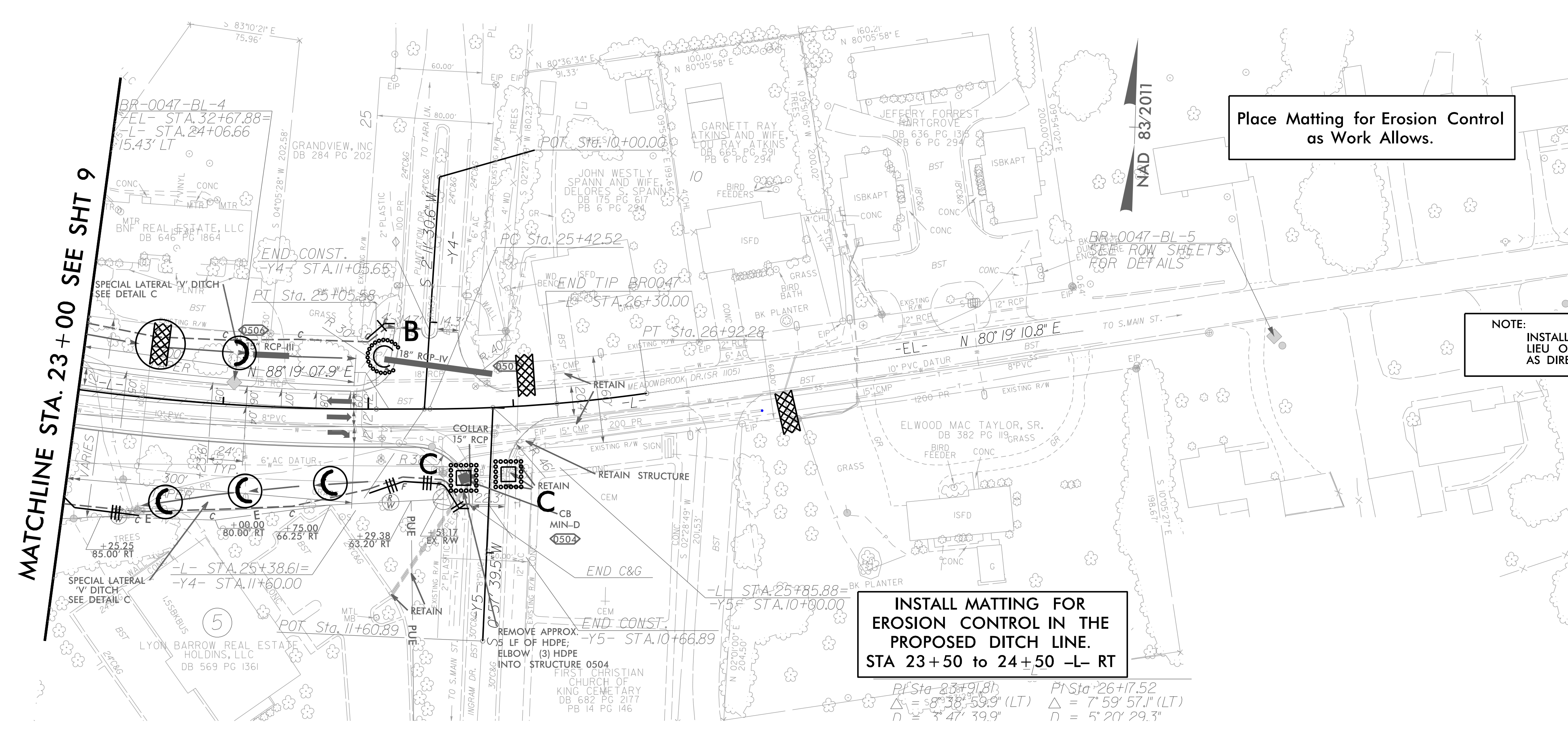


8/17/99

PROJECT REFERENCE NO. BR-0047	SHEET NO. EC-10
RW SHEET NO.	
ROADWAY DESIGN ENGINEER	HYDRAULICS ENGINEER
DOCUMENT NOT CONSIDERED FINAL UNLESS ALL SIGNATURES COMPLETED	

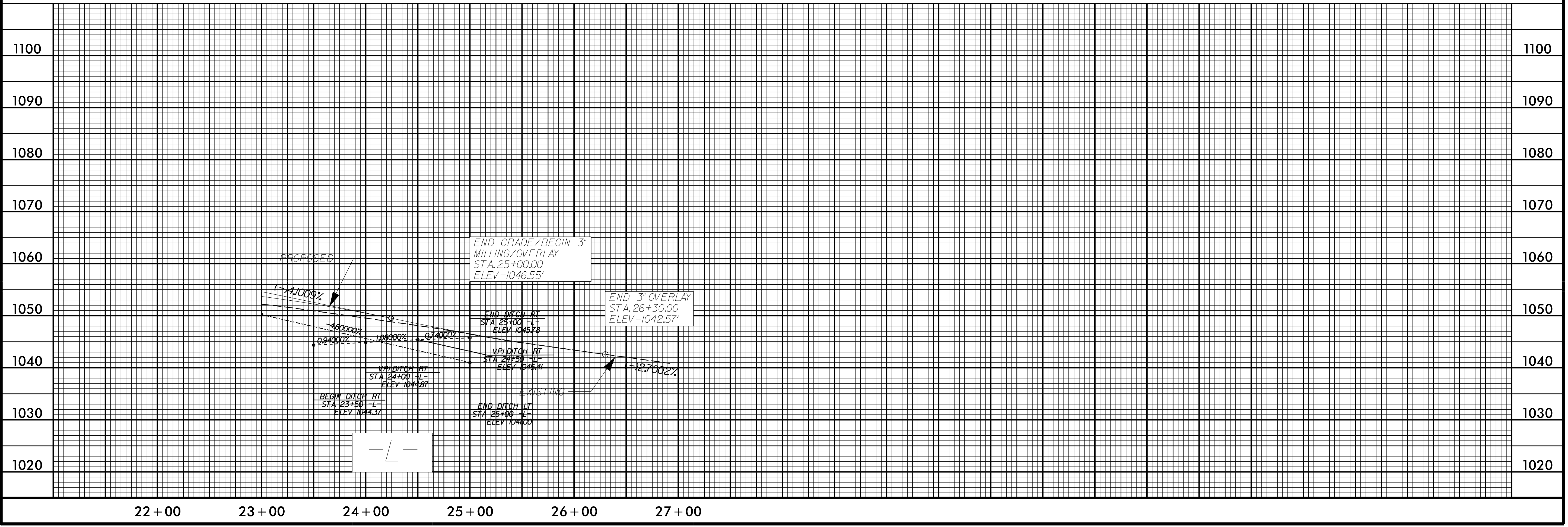
REVISIONS

MATCHLINE STA. 23+00 SEE SHT 9



NOTE:
INSTALL FABRIC INSERT INLET PROTECTION DEVICE IN LIEU OF ROCK INLET SEDIMENT TRAP TYPE 'C' AS DIRECTED.

INSTALL MATTING FOR EROSION CONTROL IN THE PROPOSED DITCH LINE.
STA 23+50 TO 24+50 -L- RT



PROPOSED
1% 100%

END GRADE/BEGIN 3" MILLING/OVERLAY
STA. 25+00.00
ELEV=1046.55'

END DITCH RT
STA. 25+00.1
ELEV 1045.78

END 3" OVERLAY
STA. 26+30.00
ELEV=1042.57'

1.60000%
0.94000%
1.08000%
0.74000%

W/PROPOSED RT
STA 24+00 -L-
ELEV 1044.87

W/EXISTING RT
STA 24+00 -L-
ELEV 1044.37

W/PROPOSED RT
STA 25+00 -L-
ELEV 1045.11

W/EXISTING RT
STA 25+00 -L-
ELEV 1044.00

EXISTING

-L-

\$\$\$\$SYTIME\$\$\$\$