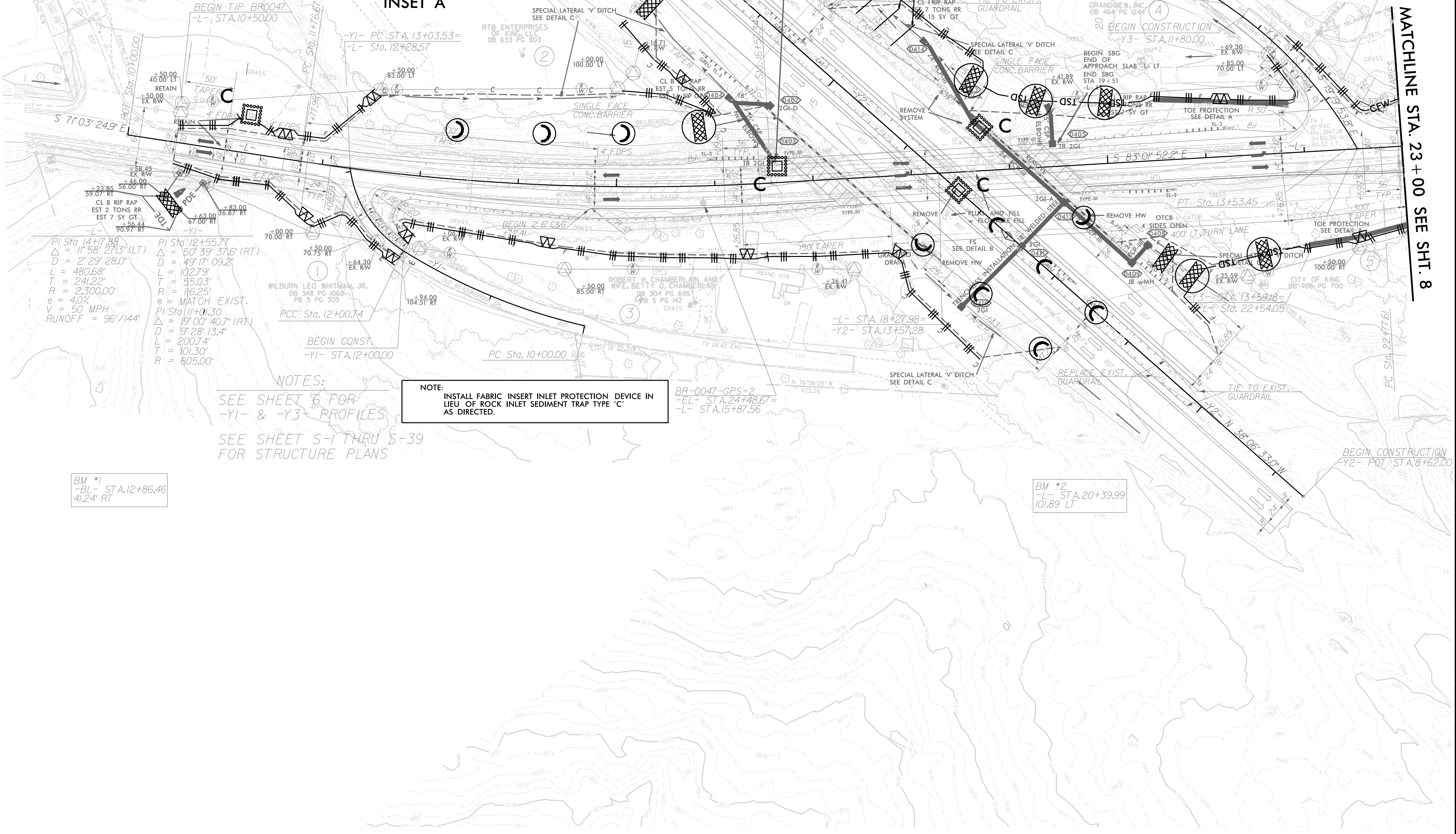
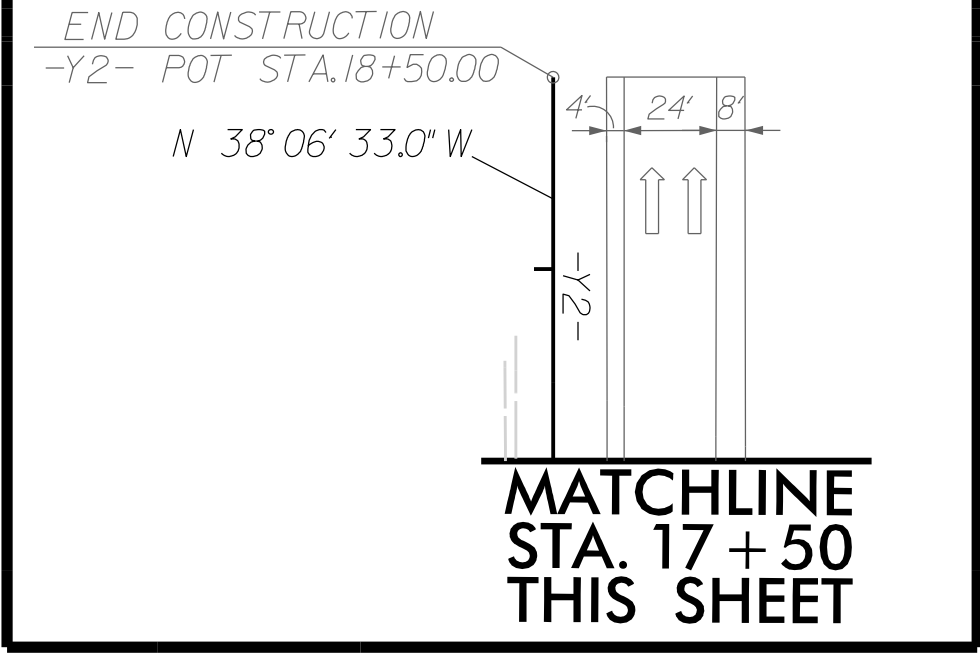


PROJECT REFERENCE NO.	SHEET NO.
BR-0047	EC-7
R/W SHEET NO.	
ROADWAY DESIGN ENGINEER	HYDRAULICS ENGINEER
DOCUMENT NOT CONSIDERED FINAL UNLESS ALL SIGNATURES COMPLETED	

NOTE: PLACE TEMPORARY ROCK SEDIMENT DAMS TYPE - B AND TEMPORARY ROCK SILT CHECKS TYPE - A AT DRAINAGE OUTLETS.

NOTE: PERIMETER EROSION CONTROL MEASURES SHALL BE INSTALLED DURING CLEARING AND GRUBBING PHASE.

CLEARING AND GRUBBING EROSION CONTROL FOR CONSTRUCTION SHEET 4



PI Sta 14+17.88
 $\Delta = 11^{\circ} 58' 27.13''$ (LT)
 $D = 2^{\circ} 29' 28.0''$
 $L = 480.68'$
 $T = 241.22'$
 $R = 2,300.00'$
 $e = 4.0\%$
 $V = 50$ MPH
 $RUNOFF = 96/144'$

PI Sta 12+55.77
 $\Delta = 50^{\circ} 39' 37.6''$ (RT)
 $D = 49^{\circ} 17' 09.2''$
 $L = 102.79'$
 $T = 55.03'$
 $R = 116.25'$
 $e = MATCH$ EXIST.
 PI Sta 11+01.30
 $\Delta = 15^{\circ} 00' 40.7''$ (RT)
 $D = 9^{\circ} 28' 13.4''$
 $L = 200.74'$
 $T = 101.30'$
 $R = 605.00'$

NOTES:
 SEE SHEET 6 FOR
 -Y1- & -Y3- PROFILES
 SEE SHEET S-1 THRU S-39
 FOR STRUCTURE PLANS

NOTE: INSTALL FABRIC INSERT INLET PROTECTION DEVICE IN LIEU OF ROCK INLET SEDIMENT TRAP TYPE 'C' AS DIRECTED.

BR-0047-GPS-2
 -EL- STA. 24+48.67=
 -L- STA. 15+87.56

BM #1
 -BL- STA. 12+86.46
 41.24' RT

BM #2
 -L- STA. 20+39.99
 101.89 LT

REVISIONS

8.17.7.99

MATCHLINE STA. 23+00 SEE SHT. 8