

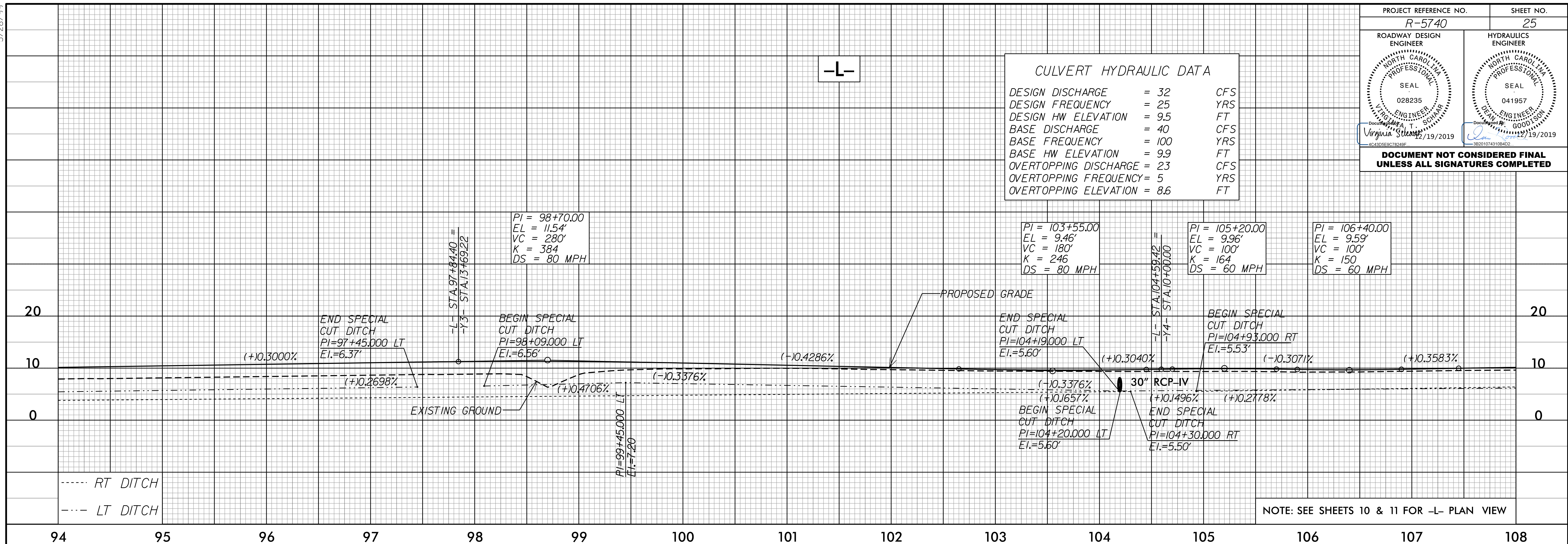
5/28/99

PROJECT REFERENCE NO. R-5740	SHEET NO. 25
ROADWAY DESIGN ENGINEER Virginia Stewart SEAL 028235 1/19/2019	HYDRAULICS ENGINEER Virginia Stewart SEAL 041957 1/19/2019

**DOCUMENT NOT CONSIDERED FINAL
UNLESS ALL SIGNATURES COMPLETED**

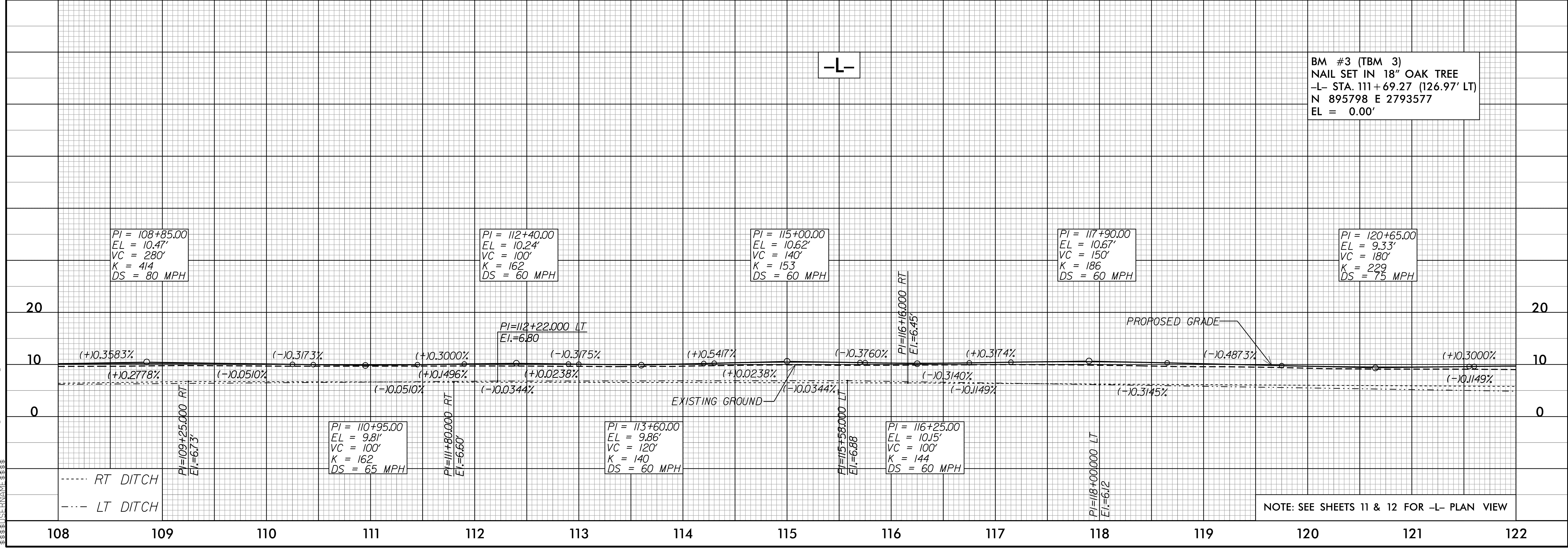
CULVERT HYDRAULIC DATA

DESIGN DISCHARGE	= 32	CFS
DESIGN FREQUENCY	= 25	YRS
DESIGN HW ELEVATION	= 9.5	FT
BASE DISCHARGE	= 40	CFS
BASE FREQUENCY	= 100	YRS
BASE HW ELEVATION	= 9.9	FT
OVERTOPPING DISCHARGE	= 23	CFS
OVERTOPPING FREQUENCY	= 5	YRS
OVERTOPPING ELEVATION	= 8.6	FT



NOTE: SEE SHEETS 10 & 11 FOR -L- PLAN VIEW

17 DEC 2019 11:50 AM R5740_rdy_pf1_PSH.dgn



NOTE: SEE SHEETS 11 & 12 FOR -L- PLAN VIEW