

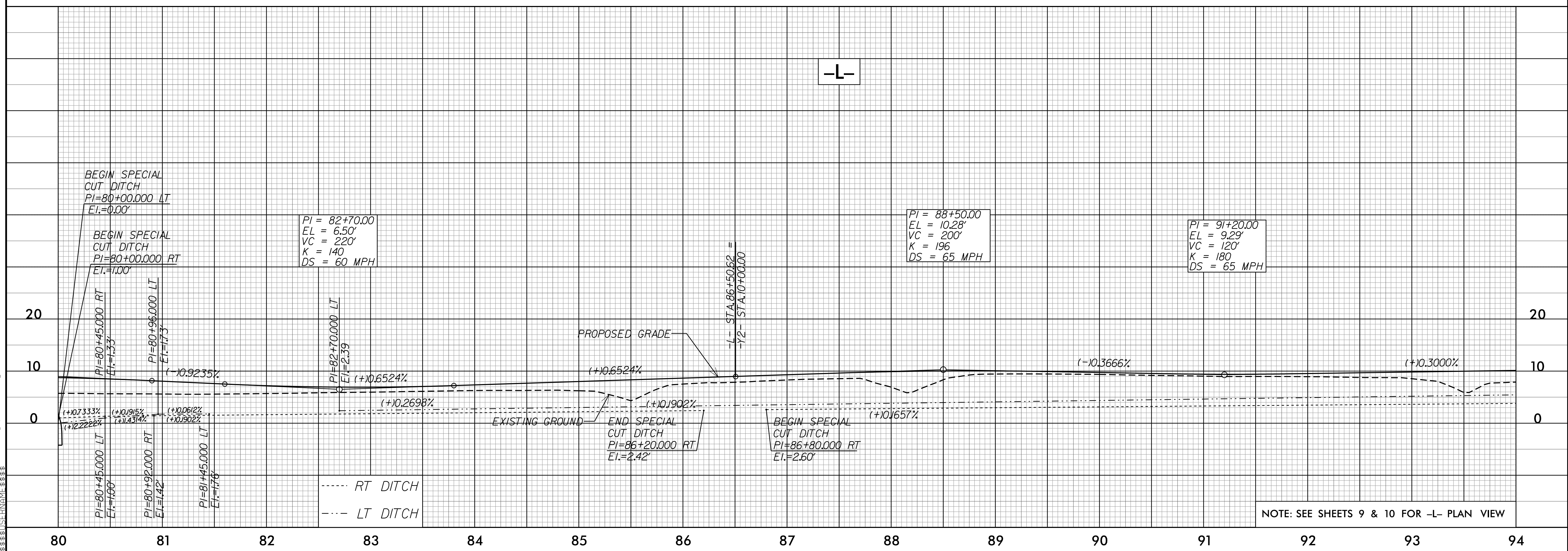
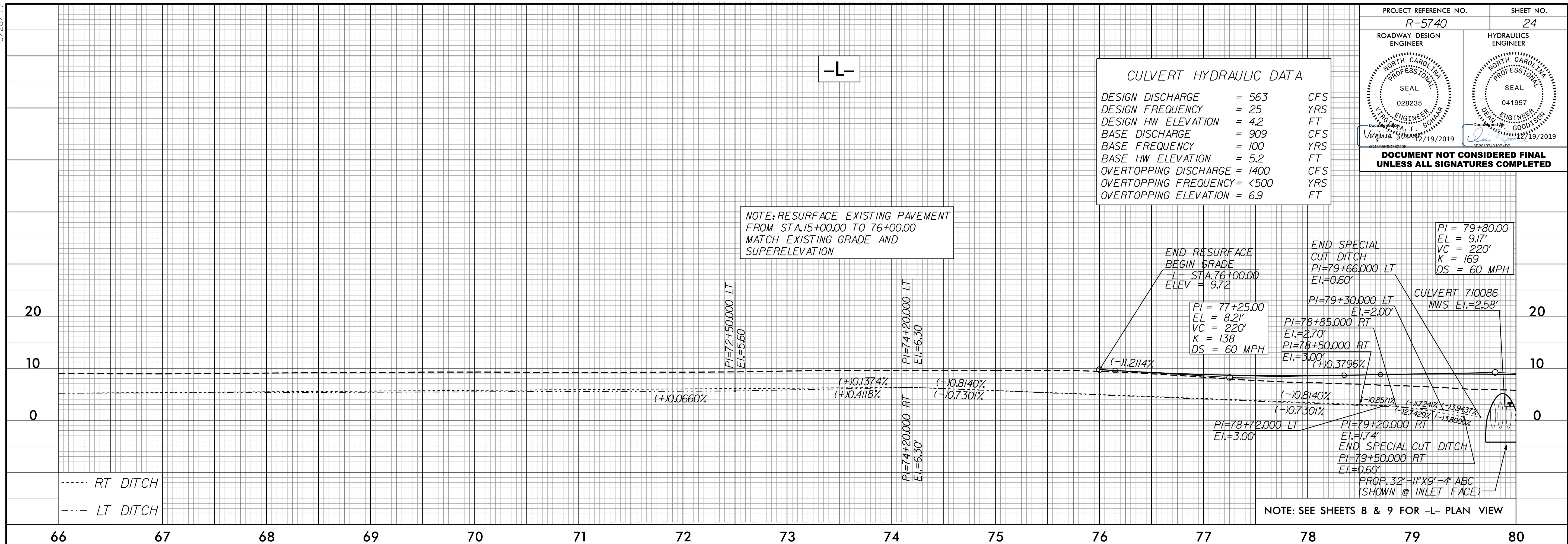
5/26/99

PROJECT REFERENCE NO. <b>R-5740</b>	SHEET NO. <b>24</b>
ROADWAY DESIGN ENGINEER	HYDRAULICS ENGINEER

**CULVERT HYDRAULIC DATA**

DESIGN DISCHARGE	= 563	CFS
DESIGN FREQUENCY	= 25	YRS
DESIGN HW ELEVATION	= 4.2	FT
BASE DISCHARGE	= 909	CFS
BASE FREQUENCY	= 100	YRS
BASE HW ELEVATION	= 5.2	FT
OVERTOPPING DISCHARGE	= 1400	CFS
OVERTOPPING FREQUENCY	= <500	YRS
OVERTOPPING ELEVATION	= 6.9	FT

**DOCUMENT NOT CONSIDERED FINAL UNLESS ALL SIGNATURES COMPLETED**



R:\DEC-2019\1:50\NR5740-rdy-pfl\_PSH.dgn  
5/26/99 10:58:56 AM