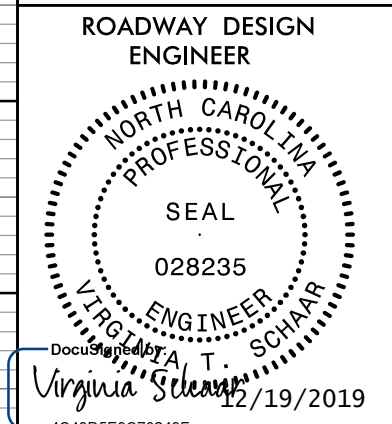
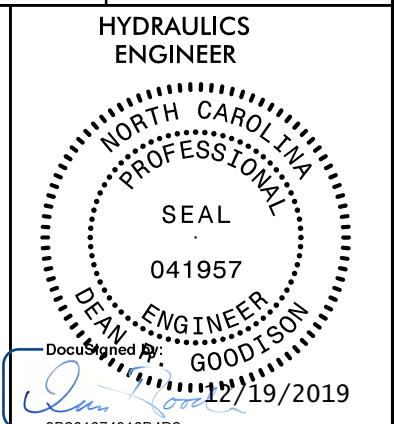


5/26/99

PROJECT REFERENCE NO. R-5740	SHEET NO. 22
ROADWAY DESIGN ENGINEER 	HYDRAULICS ENGINEER 

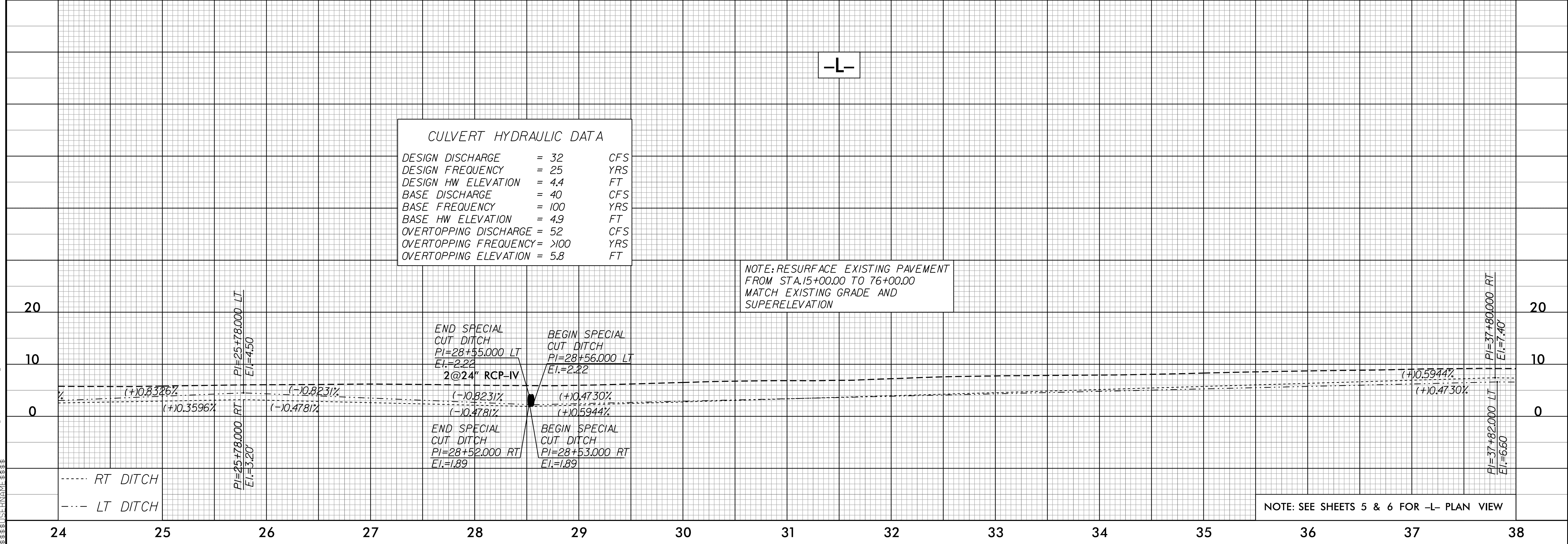
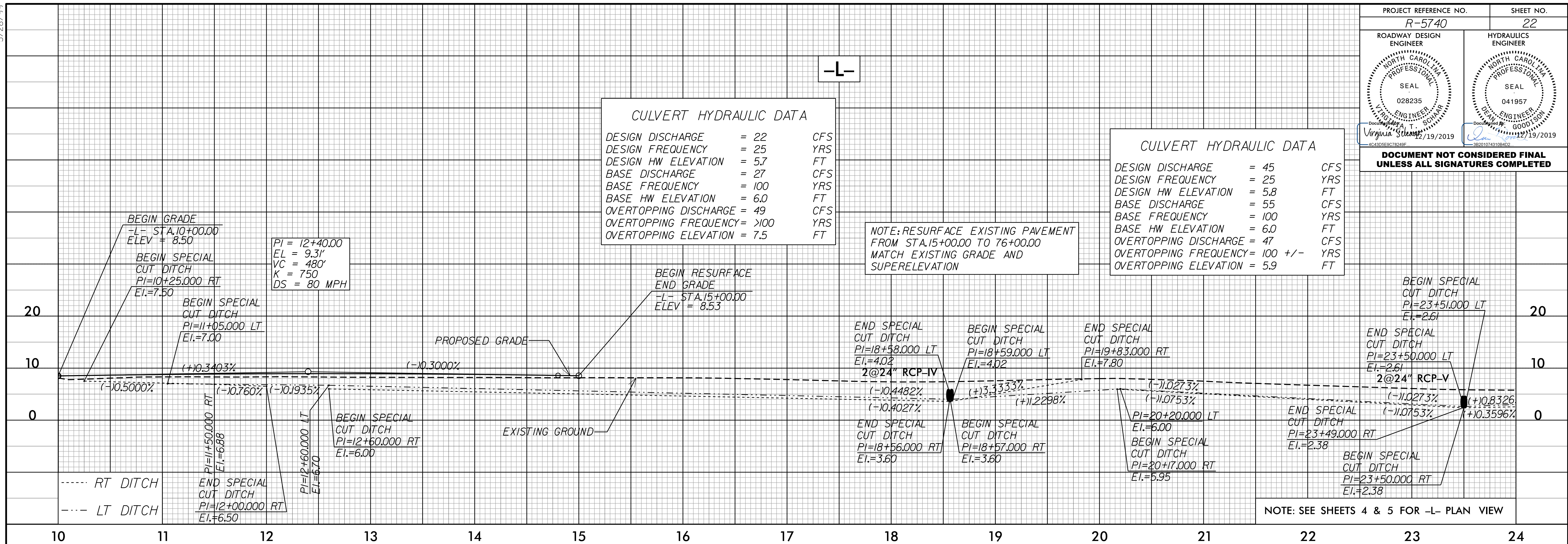
**DOCUMENT NOT CONSIDERED FINAL
UNLESS ALL SIGNATURES COMPLETED**

CULVERT HYDRAULIC DATA

DESIGN DISCHARGE	= 22	CFS
DESIGN FREQUENCY	= 25	YRS
DESIGN HW ELEVATION	= 5.7	FT
BASE DISCHARGE	= 27	CFS
BASE FREQUENCY	= 100	YRS
BASE HW ELEVATION	= 6.0	FT
OVERTOPPING DISCHARGE	= 49	CFS
OVERTOPPING FREQUENCY	= >100	YRS
OVERTOPPING ELEVATION	= 7.5	FT

CULVERT HYDRAULIC DATA

DESIGN DISCHARGE	= 45	CFS
DESIGN FREQUENCY	= 25	YRS
DESIGN HW ELEVATION	= 5.8	FT
BASE DISCHARGE	= 55	CFS
BASE FREQUENCY	= 100	YRS
BASE HW ELEVATION	= 6.0	FT
OVERTOPPING DISCHARGE	= 47	CFS
OVERTOPPING FREQUENCY	= 100 +/-	YRS
OVERTOPPING ELEVATION	= 5.9	FT



17 DEC 2019 11:50 R:\5740\RDY_PSH.dgn