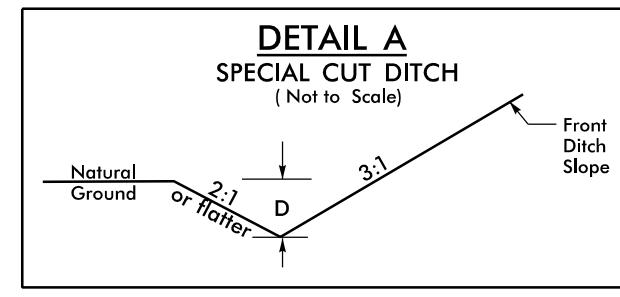


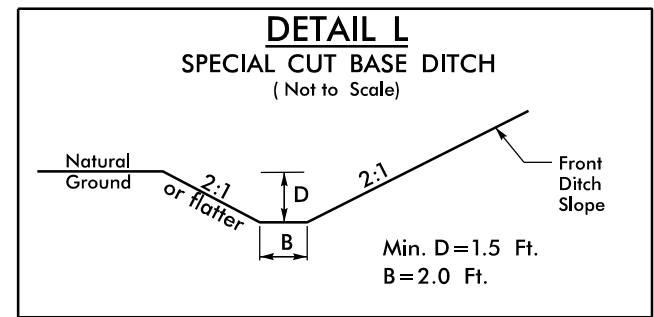
5/14/19

PROJECT REFERENCE NO. <b>R-5740</b>	SHEET NO. <b>12</b>
RW SHEET NO.	
ROADWAY DESIGN ENGINEER	HYDRAULICS ENGINEER
<b>DOCUMENT NOT CONSIDERED FINAL UNLESS ALL SIGNATURES COMPLETED</b>	

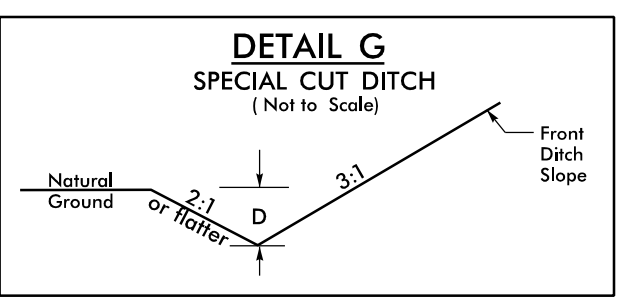
-L-  
 PI Sta 121+70.65  
 $\Delta = 20' 40' 30.6" (LT)$   
 $D = 5' 06' 56.5"$   
 $L = 404.15'$   
 $T = 204.30'$   
 $R = 1120.00'$   
 $SE = 0.06$



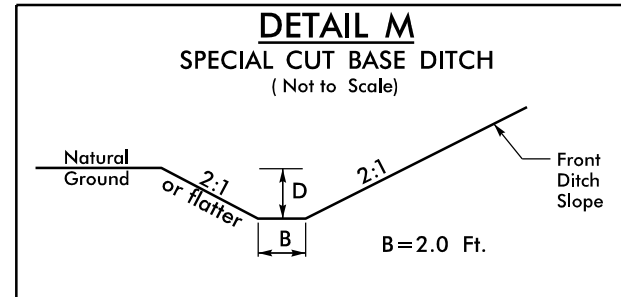
FROM -L- STA. 109+25 TO -L- STA. 116+16 RT Min. D=1.0 Ft.  
 FROM -L- STA. 116+16 TO -L- STA. 122+08 RT Min. D=1.5 Ft.



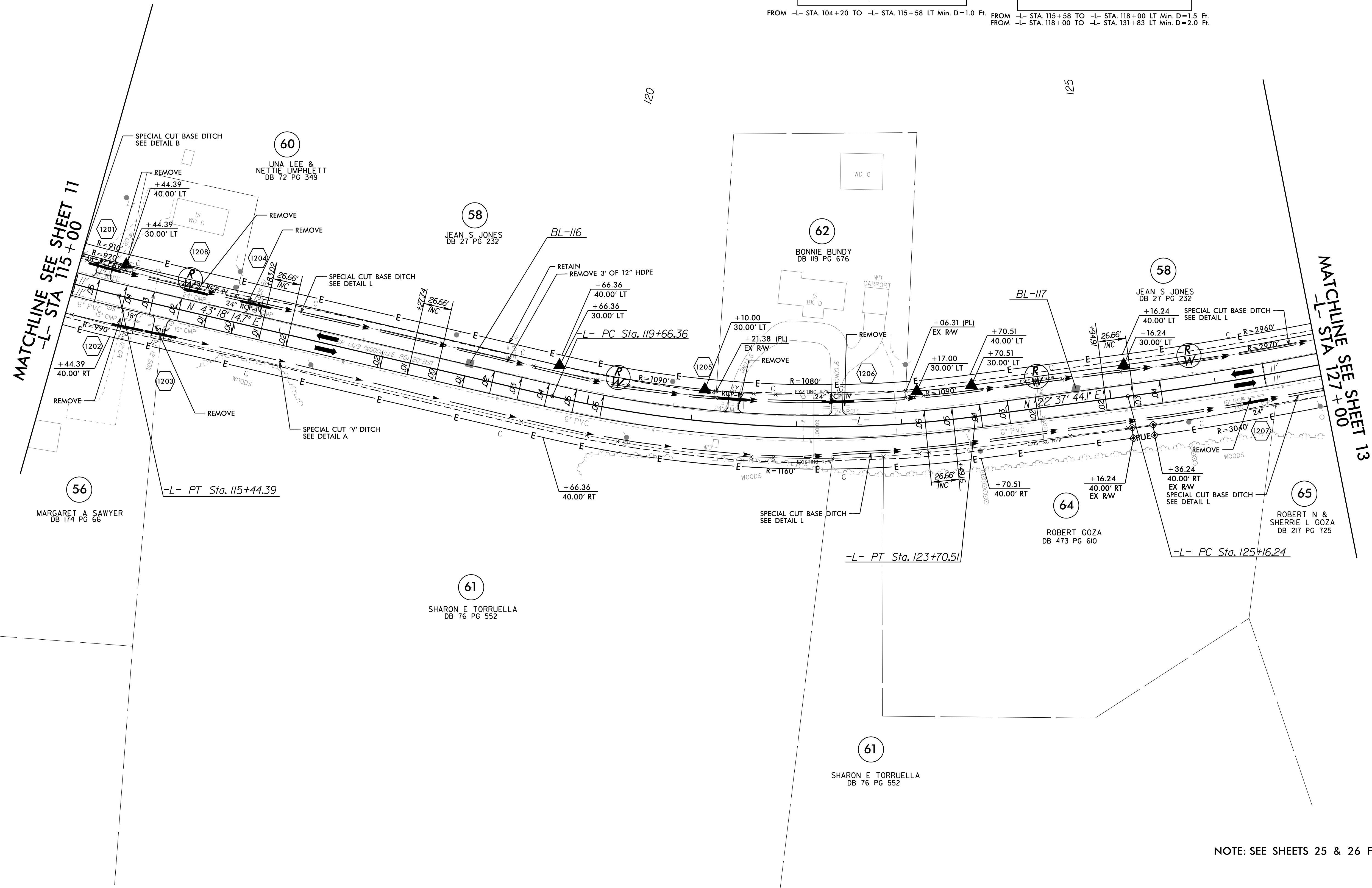
FROM -L- STA. 122+08 TO -L- STA. 131+83 RT



FROM -L- STA. 104+20 TO -L- STA. 115+58 LT Min. D=1.0 Ft.



FROM -L- STA. 115+58 TO -L- STA. 118+00 LT Min. D=1.5 Ft.  
 FROM -L- STA. 118+00 TO -L- STA. 131+83 LT Min. D=2.0 Ft.



NOTE: SEE SHEETS 25 & 26 FOR -L- PROFILE

R:\18-DEC-2019 11:03 R5740\_r.dwg\_PSH-12.dgn