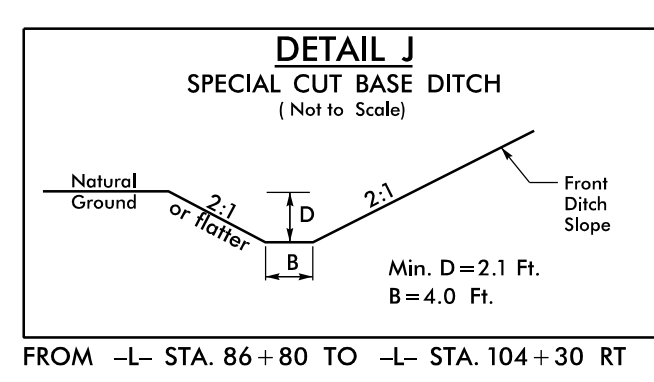
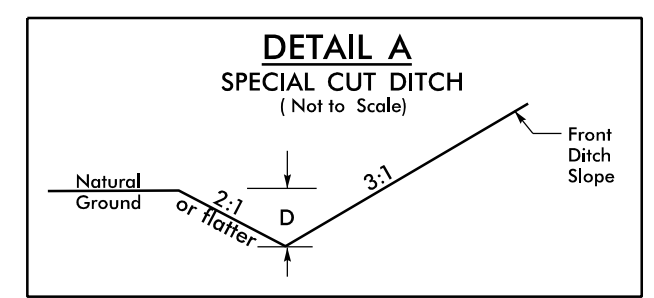
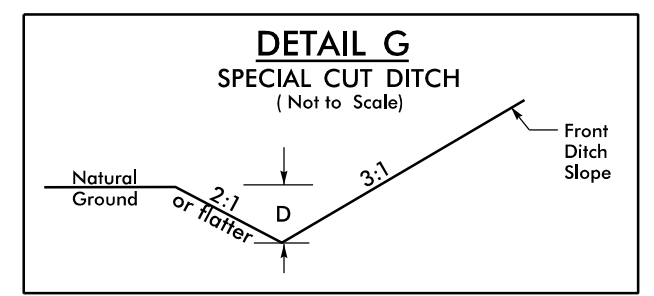
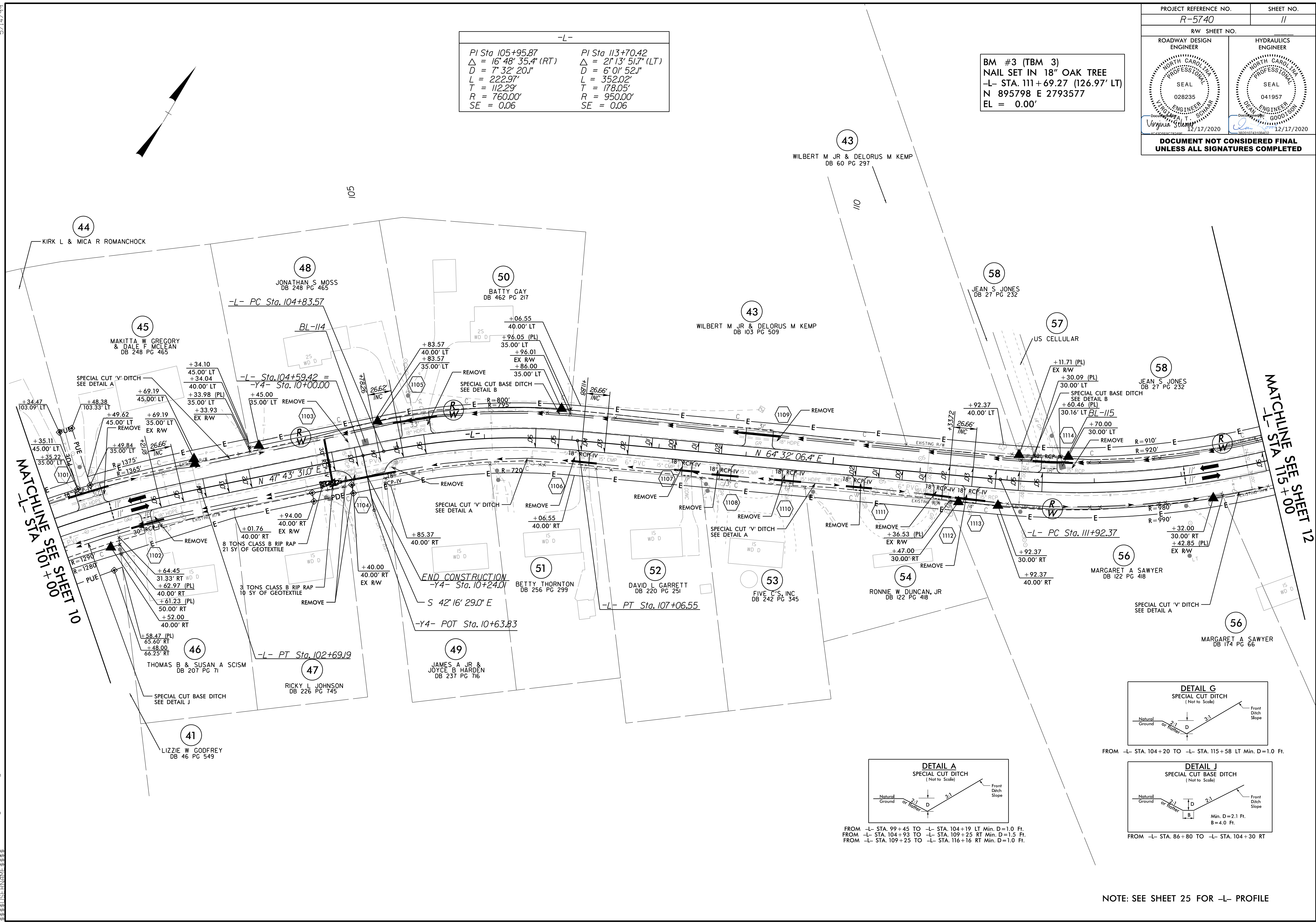


5/14/19

PROJECT REFERENCE NO. R-5740	SHEET NO. 11
RW SHEET NO.	
ROADWAY DESIGN ENGINEER	HYDRAULICS ENGINEER
DOCUMENT NOT CONSIDERED FINAL UNLESS ALL SIGNATURES COMPLETED	

-L-	
PI Sta 105+95.87 Δ = 16° 48' 35.4" (RT) D = 7' 32" 20.1" L = 222.97' T = 112.29' R = 760.00' SE = 0.06	PI Sta 113+70.42 Δ = 2° 13' 51.7" (LT) D = 6' 01" 52.1" L = 352.02' T = 178.05' R = 950.00' SE = 0.06

BM #3 (TBM 3)
NAIL SET IN 18" OAK TREE
-L- STA. 111+69.27 (126.97' LT)
N 895798 E 2793577
EL = 0.00'



NOTE: SEE SHEET 25 FOR -L- PROFILE

R:\17_DEC-2020_11:29_R5740_rdy_PSH-11.dgn