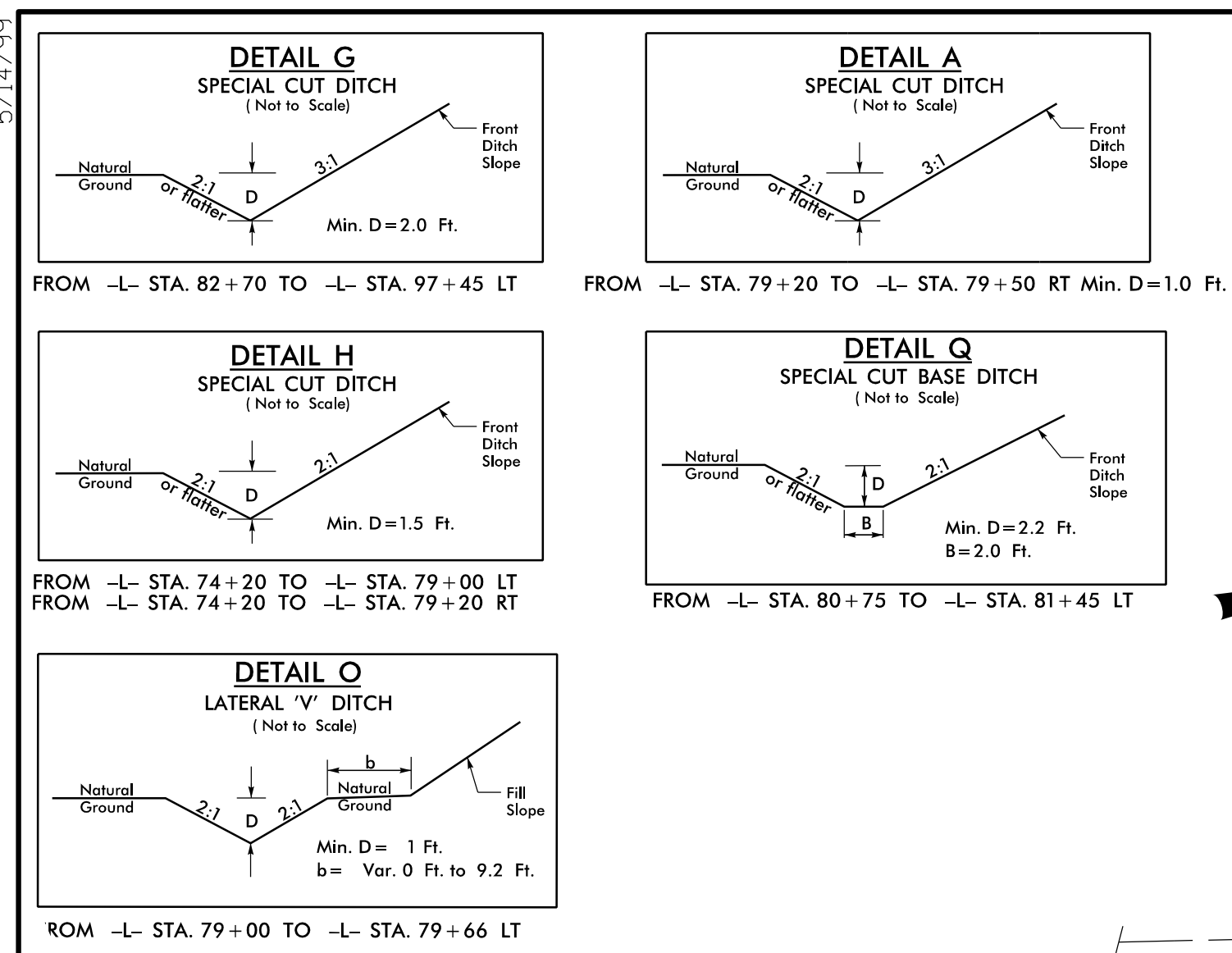
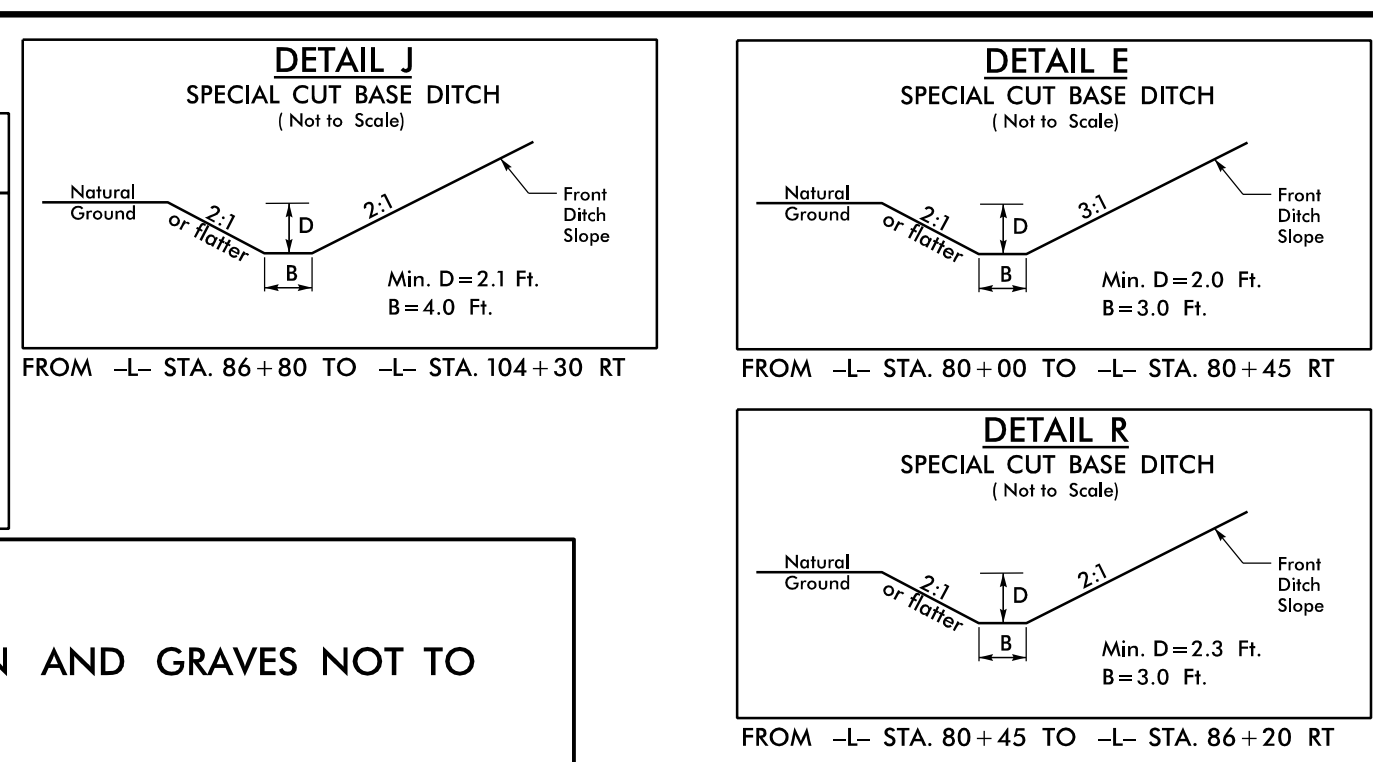


PROJECT REFERENCE NO. R-5740	SHEET NO. 9
RW SHEET NO.	
ROADWAY DESIGN ENGINEER	HYDRAULICS ENGINEER
DOCUMENT NOT CONSIDERED FINAL UNLESS ALL SIGNATURES COMPLETED	

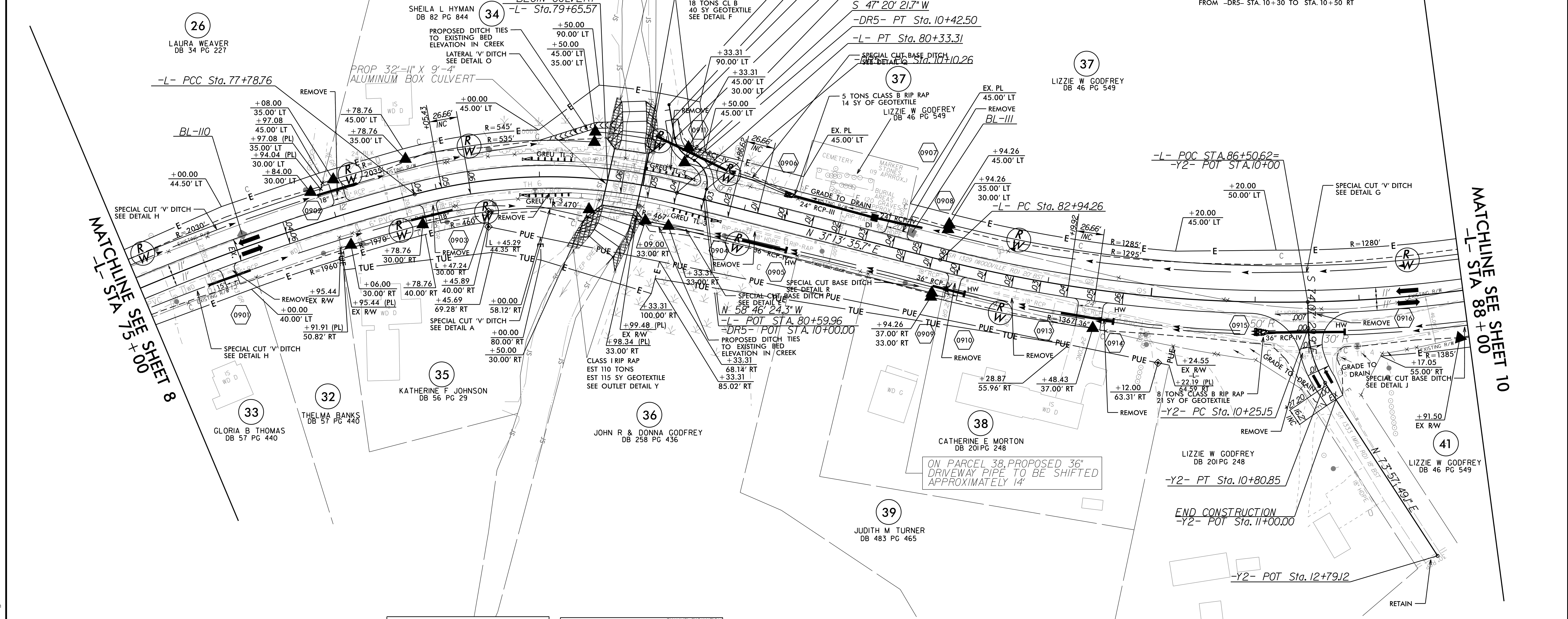
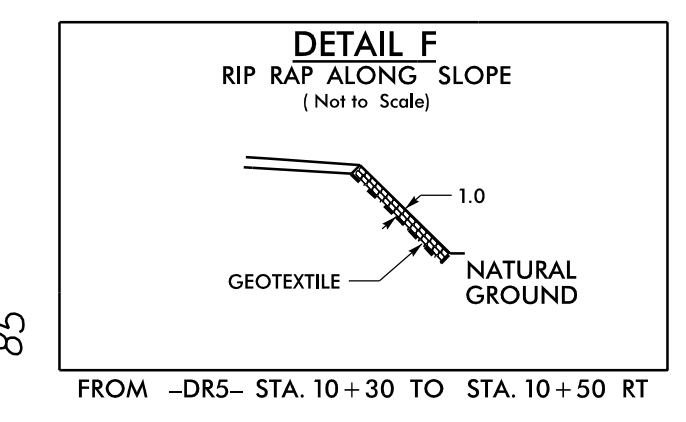


-L-		
PI Sta 76+12.47 Δ = 9° 33' 00.5" (RT) D = 2' 51' 53.2" L = 333.36' T = 167.07' R = 2,000.00' SE = EXIST	PI Sta 79+08.86 Δ = 29° 10' 09.7" (RT) D = 1' 27' 33.0" L = 254.55' T = 130.10' R = 500.00' SE = EXIST	PI Sta 87+04.57 Δ = 34° 17' 24.4" (LT) D = 4' 18' 28.6" L = 795.97' T = 410.31' R = 1,330.00' SE = 0.06



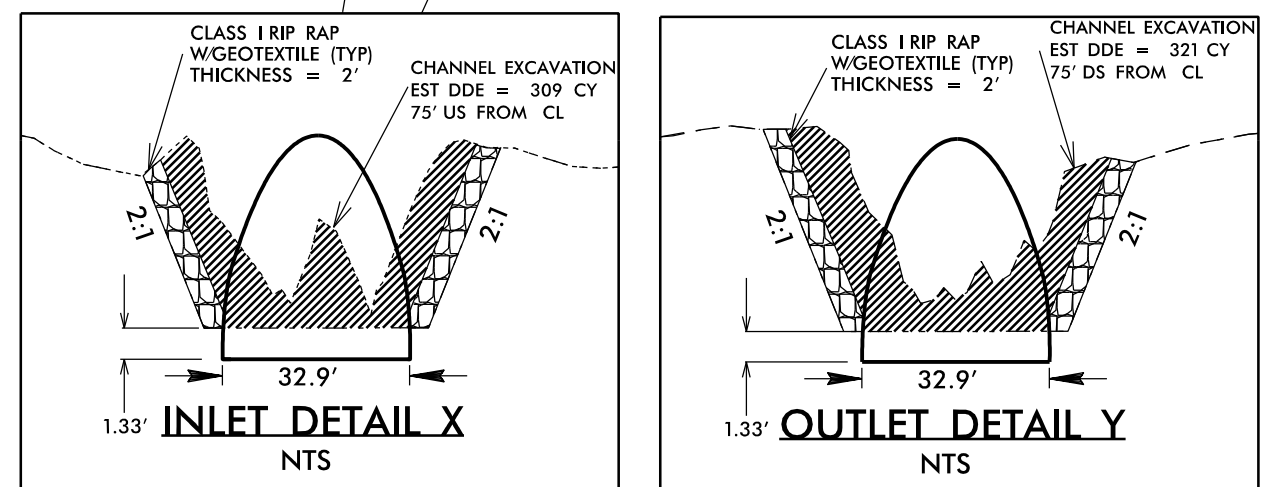
NOTE:

- 1) GODFREY CEMETERY SIGN AND GRAVES NOT TO BE DISTURBED
- 2) NO HEAVY EQUIPMENT BEYOND PROPOSED RW ON PARCEL 37



MATCHLINE SEE SHEET 8
-L- STA 75+00

MATCHLINE SEE SHEET 10
-L- STA 88+00



-DR5-		-Y2-
PI Sta 10+29.06 Δ = 7° 53' 14.0" (LT) D = 229' 10" 59.2" L = 32.24' T = 18.80' R = 25.00'	PI Sta 10+62.02 Δ = 49° 52' 00.0" (RT) D = 229' 10" 59.2" L = 21.76' T = 11.62' R = 25.00'	PI Sta 10+53.74 Δ = 31° 54' 41.0" (LT) D = 57' 17" 44.8" L = 55.70' T = 28.59' R = 100.00' SE = 0.01

NOTE: SEE SHEET 24 FOR -L- PROFILE
SEE SHEET 31 FOR -Y2- & -DR5- PROFILES
SEE SHEET C-1 THRU C-8 FOR CULVERT PLANS

08-APR-2020 17:28 R5740_PSH.dgn