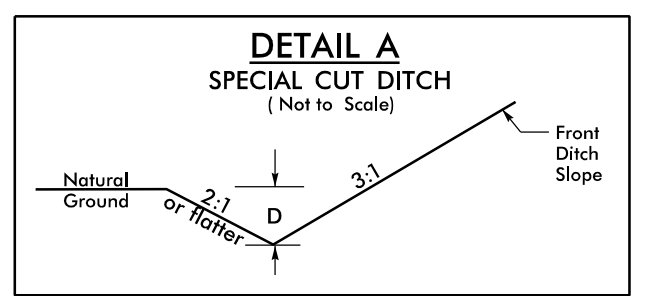
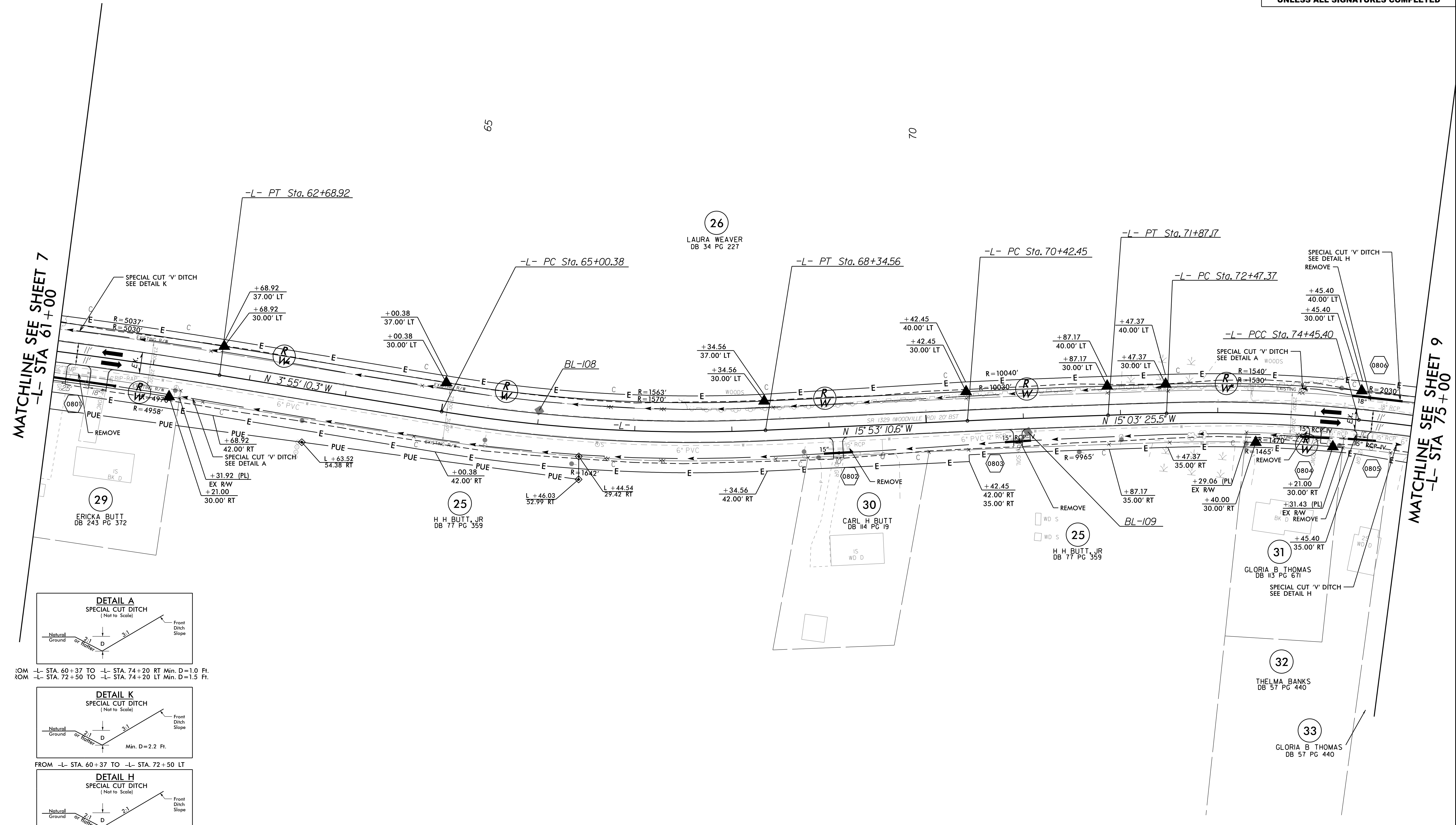


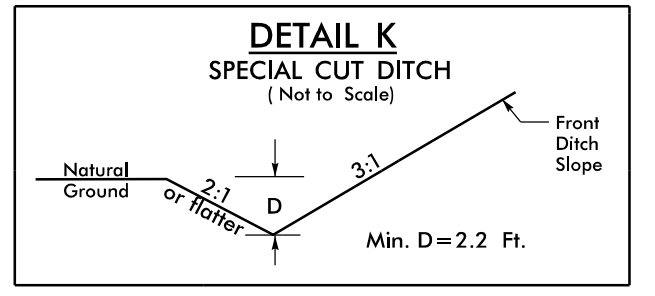
5/14/19

PROJECT REFERENCE NO. <b>R-5740</b>	SHEET NO. <b>8</b>
RW SHEET NO.	
ROADWAY DESIGN ENGINEER	HYDRAULICS ENGINEER
<b>DOCUMENT NOT CONSIDERED FINAL UNLESS ALL SIGNATURES COMPLETED</b>	

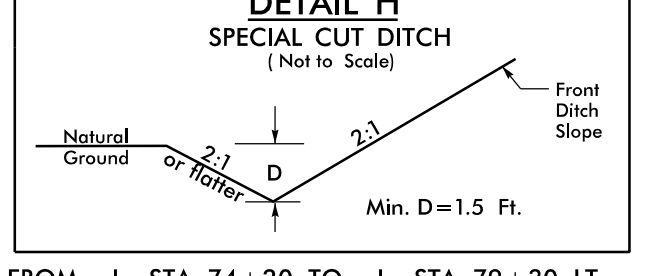
-L-			
PI Sta 61+43.34 Δ = 2° 52' 43.3" (RT) D = 1° 08' 45.3" L = 251.2' T = 125.63' R = 5,000.00' SE = EXIST	PI Sta 66+68.08 Δ = 1° 58' 00.3" (LT) D = 3° 34' 51.6" L = 334.17' T = 167.70' R = 1,600.00' SE = EXIST	PI Sta 71+4.81 Δ = 0° 49' 45.1" (RT) D = 0° 34' 22.6" L = 144.72' T = 72.36' R = 10,000.00' SE = EXIST	PI Sta 73+46.53 Δ = 7° 33' 51.0" (RT) D = 3° 49' 11.0" L = 198.03' T = 99.16' R = 1,500.00' SE = EXIST



FROM -L- STA. 60+37 TO -L- STA. 74+20 RT Min. D=1.0 Ft.  
FROM -L- STA. 72+50 TO -L- STA. 74+20 LT Min. D=1.5 Ft.



FROM -L- STA. 60+37 TO -L- STA. 72+50 LT



FROM -L- STA. 74+20 TO -L- STA. 79+30 LT

NOTE: SEE SHEETS 23 & 24 FOR -L- PROFILE

16-DEC-2019 15:26 RE740\_r.dwg\_PSH\_08.dgn