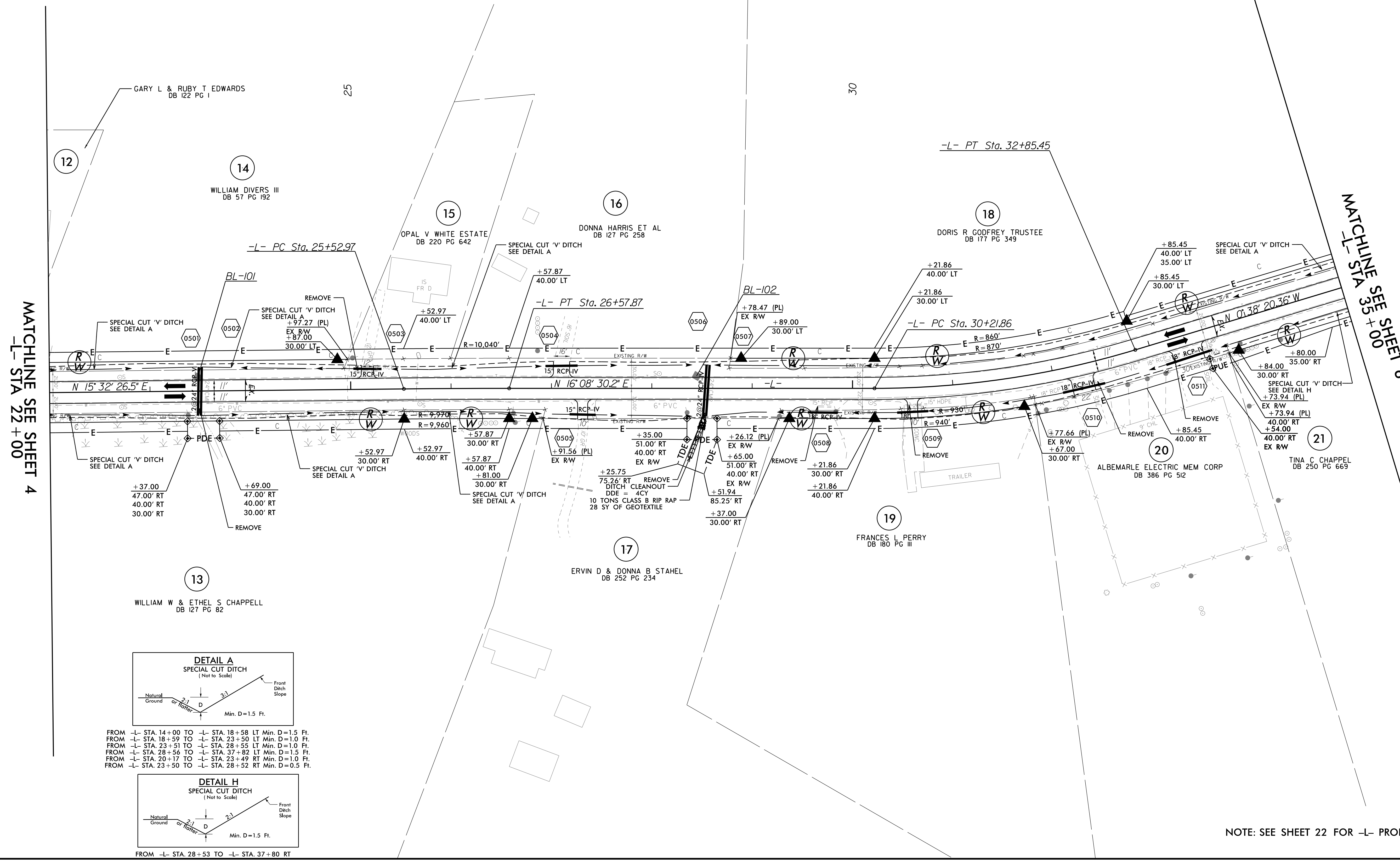


5/14/19

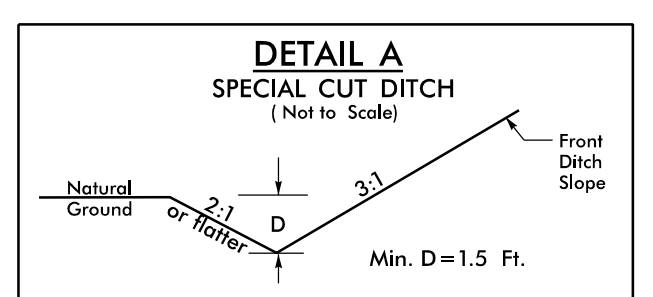
PROJECT REFERENCE NO. R-5740		SHEET NO. 5	
RW SHEET NO.			
ROADWAY DESIGN ENGINEER		HYDRAULICS ENGINEER	
<p>DOCUMENT NOT CONSIDERED FINAL UNLESS ALL SIGNATURES COMPLETED</p>			

-L-	
PI Sta 26+05.42	PI Sta 31+54.61
$\Delta = 0^\circ 36' 03.7" (RT)$	$\Delta = 16^\circ 46' 50.5" (LT)$
$D = 0' 34' 22.6"$	$D = 6' 21' 58.3"$
$L = 104.90'$	$L = 263.59'$
$T = 52.45'$	$T = 132.75'$
$R = 10,000.00'$	$R = 900.00'$
$SE = EXIST$	$SE = EXIST$

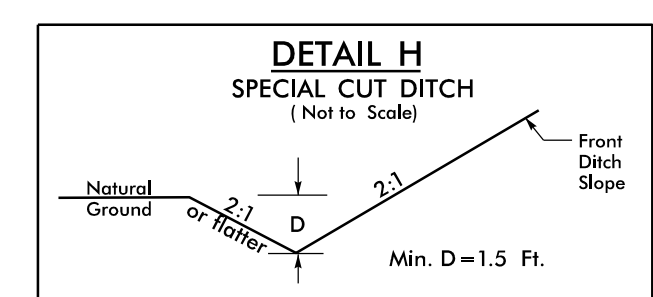


MATCHLINE SEE SHEET 4
-L- STA 22+00

MATCHLINE SEE SHEET 6
-L- STA 35+00



- FROM -L- STA. 14+00 TO -L- STA. 18+58 LT Min. D=1.5 Ft.
- FROM -L- STA. 18+59 TO -L- STA. 23+50 LT Min. D=1.0 Ft.
- FROM -L- STA. 23+51 TO -L- STA. 28+55 LT Min. D=1.0 Ft.
- FROM -L- STA. 28+56 TO -L- STA. 37+82 LT Min. D=1.5 Ft.
- FROM -L- STA. 20+17 TO -L- STA. 23+49 RT Min. D=1.0 Ft.
- FROM -L- STA. 23+50 TO -L- STA. 28+52 RT Min. D=0.5 Ft.



FROM -L- STA. 28+53 TO -L- STA. 37+80 RT

NOTE: SEE SHEET 22 FOR -L- PROFILE

R:\6-DEC-2019 12:17\RE740_rdu_PSH_05.dgn