

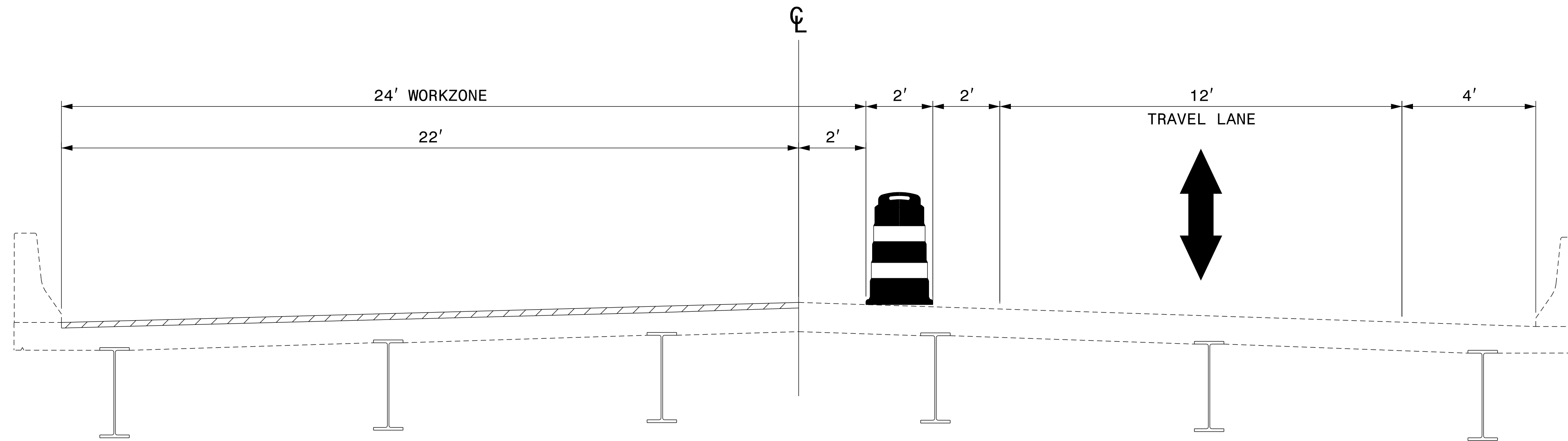
### TRAFFIC CONTROL STAGING NOTES:

#### STAGE I (US 117):

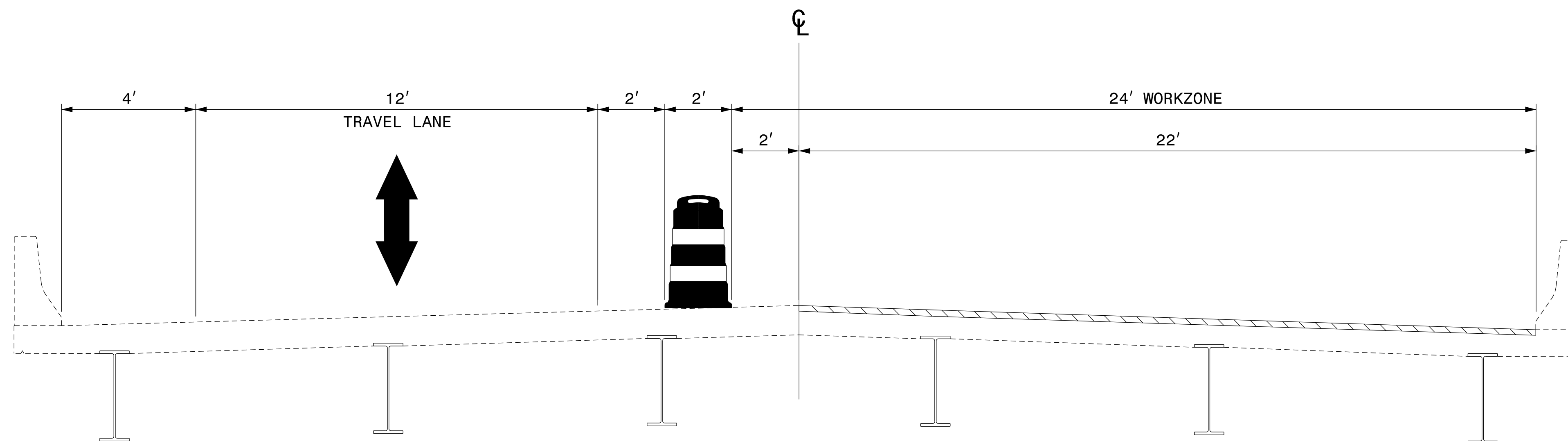
1. USE TMP-7, ROADWAY STANDARD DRAWINGS (RSD) 1101.02 SHEET 14 OF 14, 1101.01 SHEET 3 OF 3, AND 1101.11 SHEETS 2 AND 4, TO PLACE ADVANCED WARNING SIGNS AND TRAFFIC CONTROL DEVICES.
2. RECORD EXISTING PAVEMENT MARKINGS.
3. COMPLETE STAGE I BRIDGE WORK.
4. REPLACE ANY EXISTING PAVEMENT MARKINGS THAT WERE OBLITERATED DURING CONSTRUCTION.
5. REMOVE ALL TRAFFIC CONTROL DEVICES. COVER OR REMOVE ALL ADVANCED WARNING SIGNS AND RETURN TRAFFIC TO ITS EXISTING PATTERN.

#### STAGE II (US 117):

1. USE TMP-7, ROADWAY STANDARD DRAWINGS (RSD) 1101.02 SHEET 14 OF 14, 1101.01 SHEET 3 OF 3, AND 1101.11 SHEETS 2 AND 4, TO PLACE ADVANCED WARNING SIGNS AND TRAFFIC CONTROL DEVICES.
2. RECORD EXISTING PAVEMENT MARKINGS.
3. COMPLETE STAGE II BRIDGE WORK.
4. REPLACE ANY EXISTING PAVEMENT MARKINGS THAT WERE OBLITERATED DURING CONSTRUCTION.
5. REMOVE ALL TRAFFIC CONTROL DEVICES. COVER OR REMOVE ALL ADVANCED WARNING SIGNS AND RETURN TRAFFIC TO ITS EXISTING PATTERN.



TYPICAL SECTION - STAGE I



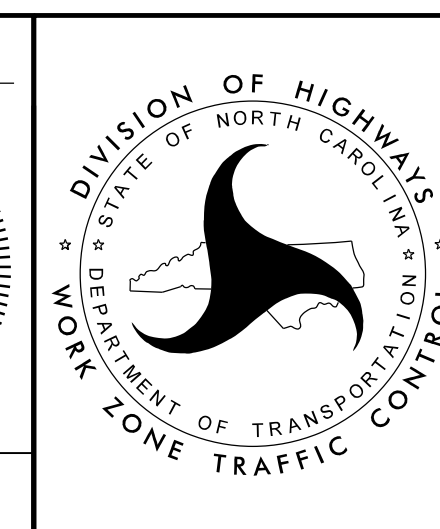
TYPICAL SECTION - STAGE II

**VOLKERT**  
 5430 Wade Park Blvd., Suite 410  
 Raleigh, NC 27607  
 Tel. 919-854-0344 Fax. 919-854-0355  
 NC License No. F-0765

APPROVED: \_\_\_\_\_  
 DATE: \_\_\_\_\_

SEAL  
 Documented by:  
 Patrick Holder  
 31822A238FC7473  
 12/18/2020

**DOCUMENT NOT CONSIDERED FINAL  
 UNLESS ALL SIGNATURES COMPLETED**



**PENDER COUNTY  
 BRIDGE 219**

**TRAFFIC CONTROL  
 STAGING (US 117)**